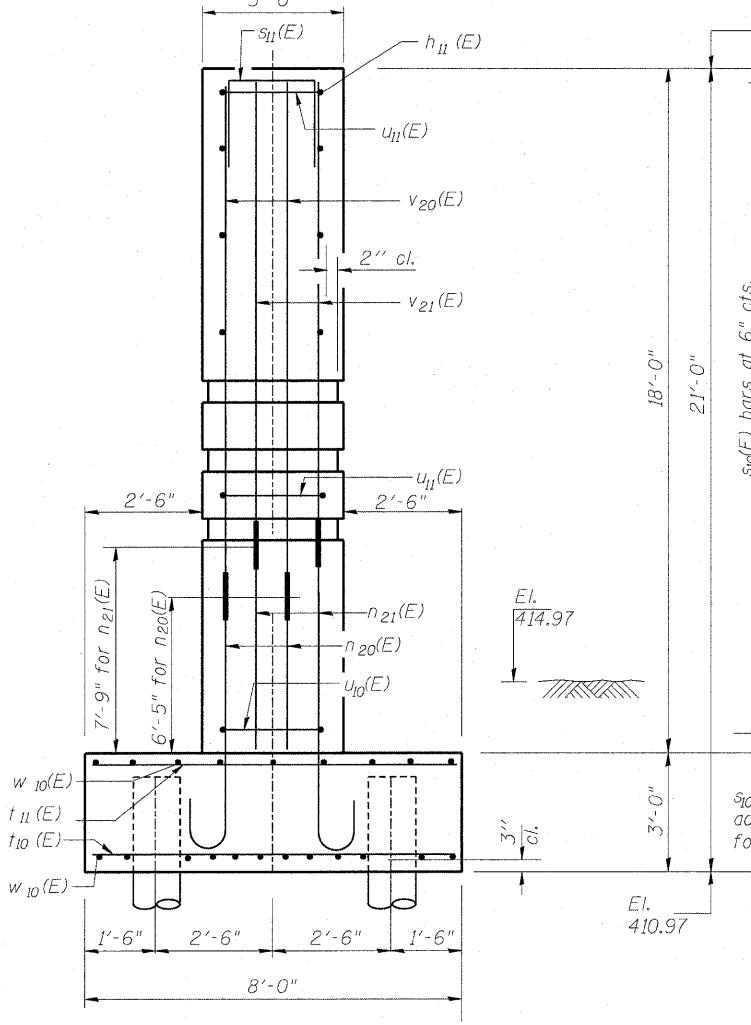
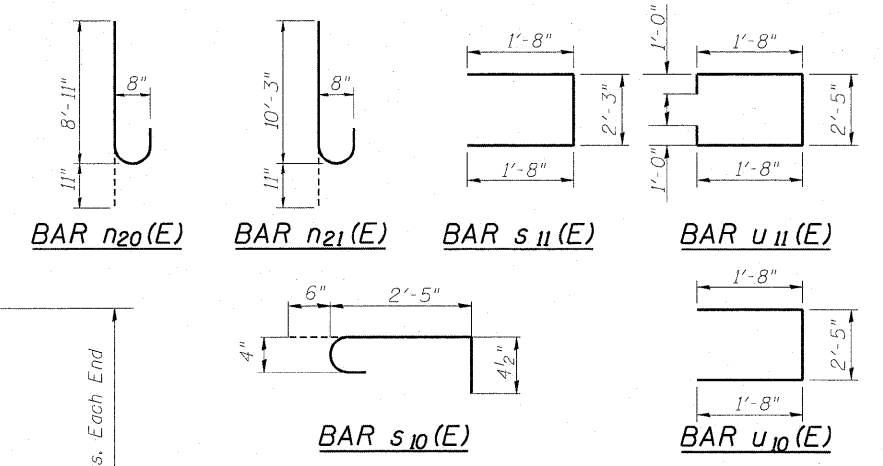
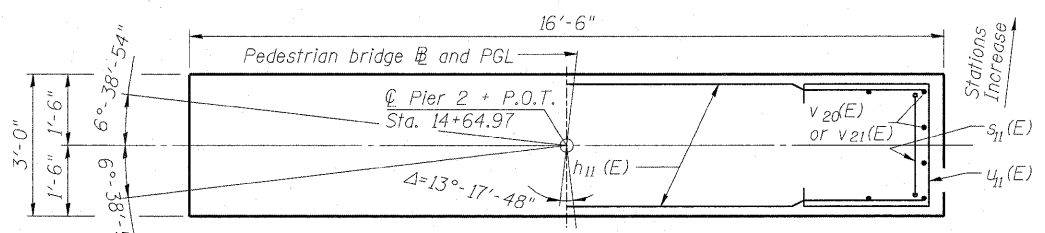
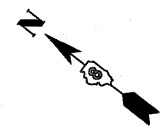
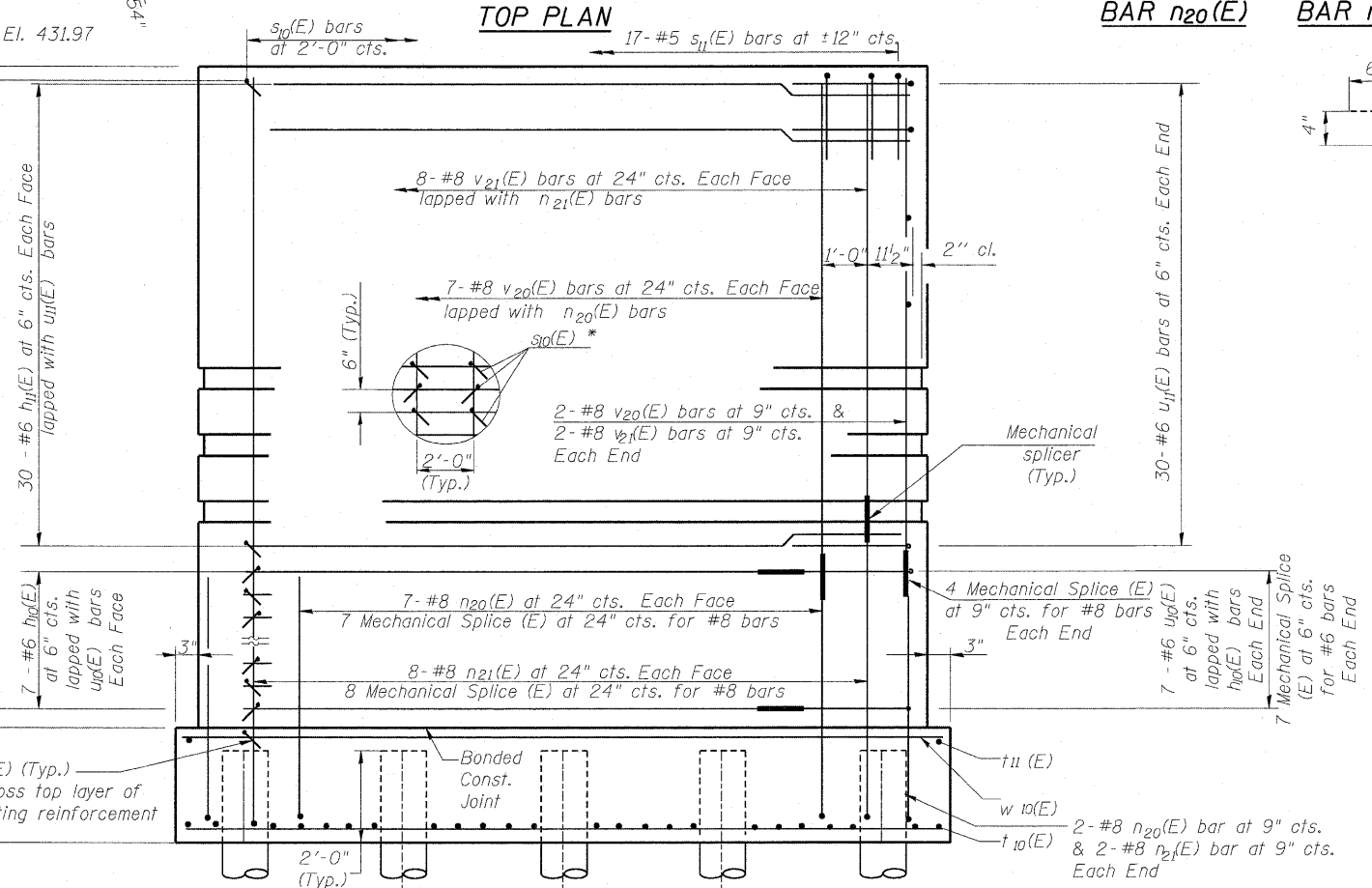


**PILE DATA - PIER 2**

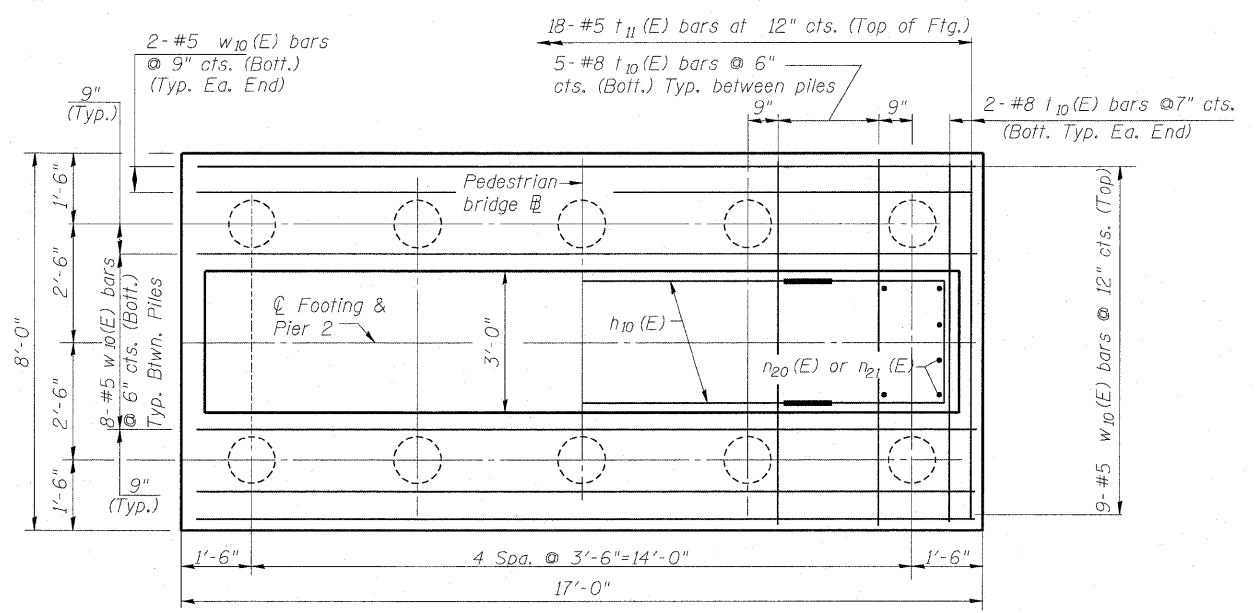
Type: Metal Shell 12" dia. x 1/4" wall with Pile Shoes  
 Nominal Required Bearing: 270 kips  
 Allowable Resistance Available: 90 kips  
 Estimated Pile Length: 64 ft  
 Number of Production Piles: 10  
 Number of Test Piles: 0



**END VIEW**  
N.T.S.



**ELEVATION - PIER 2**  
(Looking East)  
N.T.S.



**FOOTING PLAN**

\* Arrange s10(E) bars in a grid pattern at intersection of n20(E) or n21(E) or v20(E) or v21(E) and h10(E) or h11(E) or u10(E) or u11(E). Orientation of 180° hook shall also be alternate.

**BILL OF MATERIAL**

Bar	No.	Size	Length	Shape
h10(E)	14	#6	12'- 7"	—
h11(E)	60	#6	15'- 11"	—
n20(E)	18	#8	9'- 10"	U
n21(E)	20	#8	11'- 2"	U
s10(E)	304	#4	3'- 3 1/2"	L
s11(E)	17	#5	5'- 7"	L
t10(E)	24	#8	7'- 8"	—
t11(E)	18	#5	7'- 8"	—
u10(E)	14	#6	5'- 9"	U
u11(E)	60	#6	7'- 9"	U
v20(E)	18	#8	11'- 5"	—
v21(E)	20	#8	10'- 1"	—
w10(E)	21	#5	16'- 8"	—
Structure Excavation		Cu. Yd.	37.3	
Concrete Structures		Cu. Yd.	48	
Reinforcement Bars, Epoxy Coated		Pound	6,450	
Furnishing Metal Pile Shells 12" x 0.250"		Foot	660	
Driving Piles		Foot	640	
Pile Shoes		Each	10	
Concrete Sealer		Sq. Ft.	50	
Mechanical Sandblast Finish		Sq. Ft.	519	
Concrete Surface Color Treatment		Sq. Ft.	66	
Mechanical Splice		Each	66	

**NOTES:**

- All edges shall have standard 3/4" chamfers except as noted.
- Space reinforcement in cap to miss anchor bolts.
- For Anchor bolt details see Sheet PB-5. Truss fabricator shall determine size & location of anchor bolts. Cost included with Pedestrian Truss Superstructure.
- See Sheet PB-18 for urban design guideline.