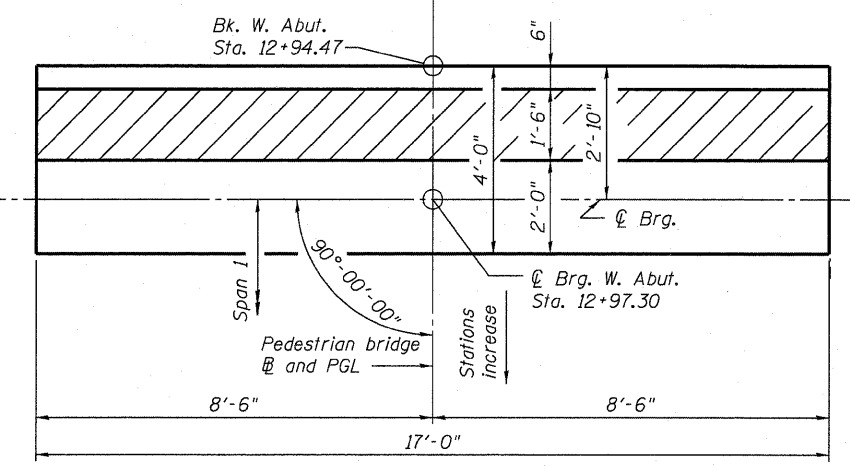
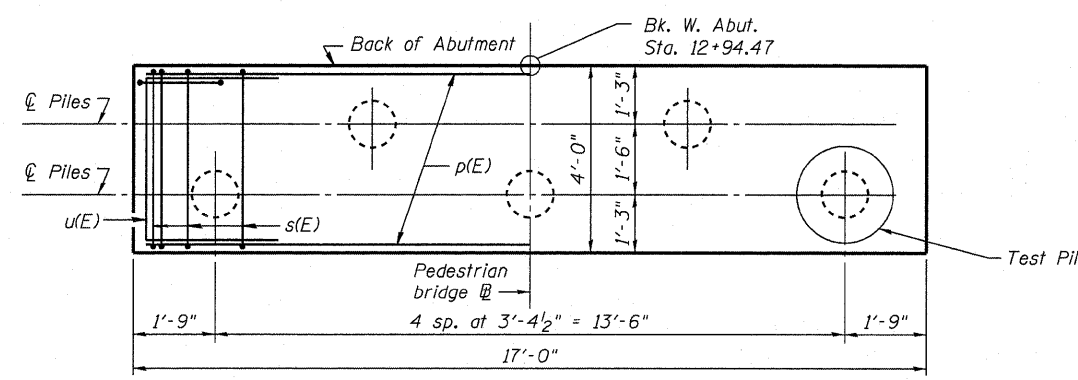


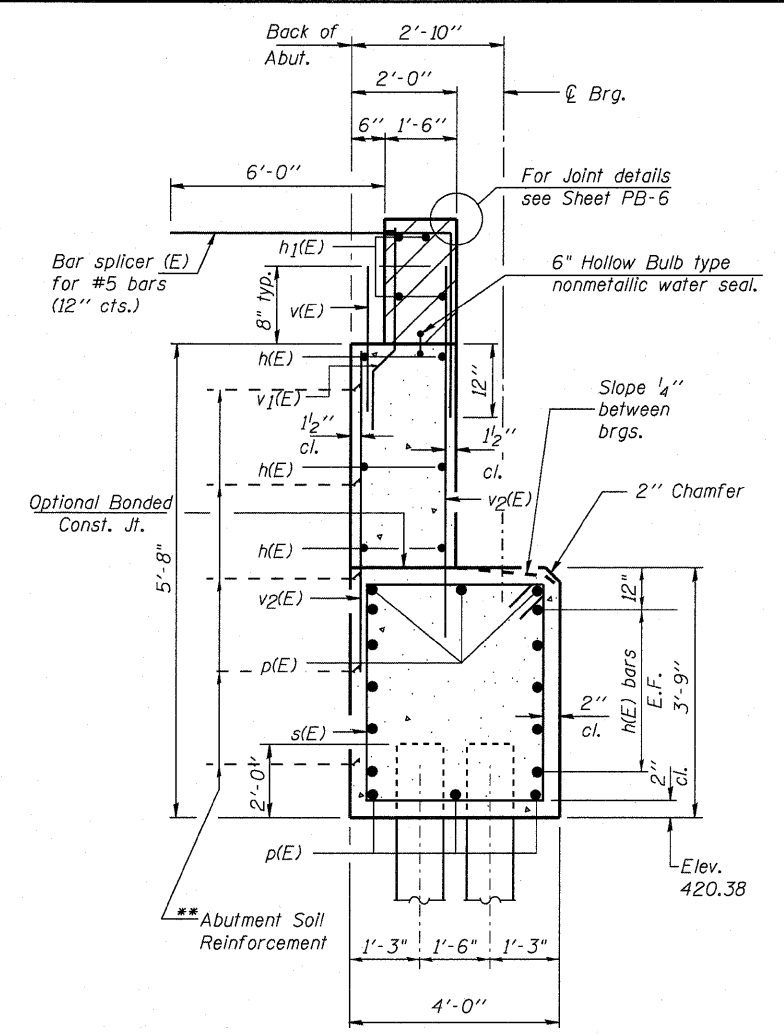
**ELEVATION - WEST ABUTMENT**



**TOP VIEW**

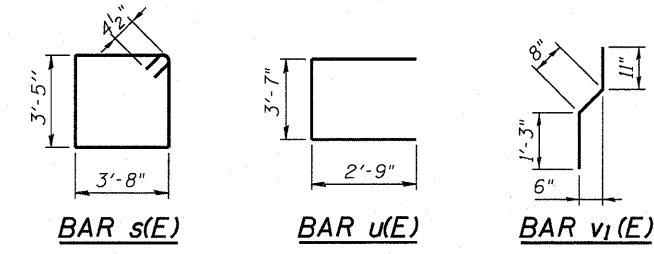


**PLAN - PILE CAP**



**SECTION A-A**

\*\* MSE wall supplier shall design the Abutment Soil Reinforcement to resist a horizontal force of 1.80 kips/ft. Contractor shall coordinate abutment construction with construction of MSE Retaining wall 082-W228.



**WEST ABUTMENT  
PILE DATA**

Type: Metal Shell 12" dia. x 1/4" wall with Pile Shoes  
 Nominal Required Bearing: 355 kips  
 Allowable Resistance Available: 86 kips  
 Estimated Pile Length: 62 ft  
 Number of Production Piles: 4  
 Number of Test Piles: 1

**WEST ABUTMENT  
BILL OF MATERIAL**

Bar	No.	Size	Length	Shape
h(E)	16	#5	16'- 8"	—
h1(E)	4	#6	16'- 8"	—
p(E)	6	#10	16'- 8"	—
s(E)	18	#4	14'- 11"	□
u(E)	8	#6	9'- 1"	—
v(E)	18	#5	2'- 6"	—
v1(E)	18	#4	2'- 10"	—
v2(E)	36	#5	4'- 5"	—
Concrete Structures	Cu. Yd.	11.9		
Reinforcement Bars, Epoxy Coated	Pound	1,350		
Furnishing Metal Shell Piles 12" x 0.250"	Foot	256		
Driving Piles	Foot	248		
Test Pile Metal Shells	Each	1		
Pile Shoes	Each	5		
Concrete Sealer	Sq. Ft.	138		
Bar Splicers	Each	18		

**Notes:**

- Piles shall be driven through 18 inch diameter precored holes extending to elevation 405 according to Article 512.09(c) of the Standard Specifications. Cost included in driving piles.
- Piles shall be driven prior to placement of reinforced select backfill of MSE Retaining Wall 082-W228. Piles shall be coated with Coal Tar Epoxy from 1" above bottom of the abutment to the bottom of reinforced select backfill. The cost of Coal Tar Epoxy coating shall be included with the cost of "Furnishing Metal Shell Piles 12" x 0.250".
- Contractor shall coordinate construction of West Abutment with design and construction of MSE Retaining Wall 082-W228.
- Hatched area shall be poured after superstructure forms have been removed. Cost shall be included with "Pedestrian Truss Superstructure".
- Space reinforcement in the abutment to miss anchor bolts.
- For details of Bar Splicers, see Sheet PB-10.
- All edges shall have standard 3/4" chamfers except as noted.
- For Anchor bolt details see sheet PB-5.