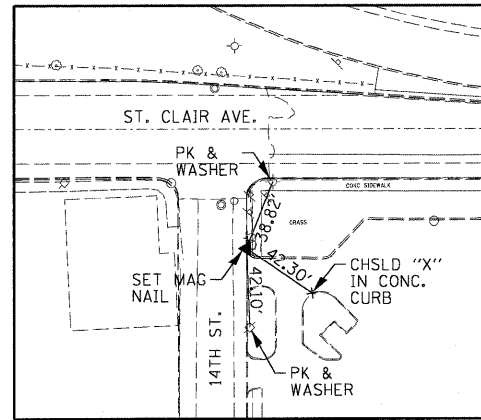
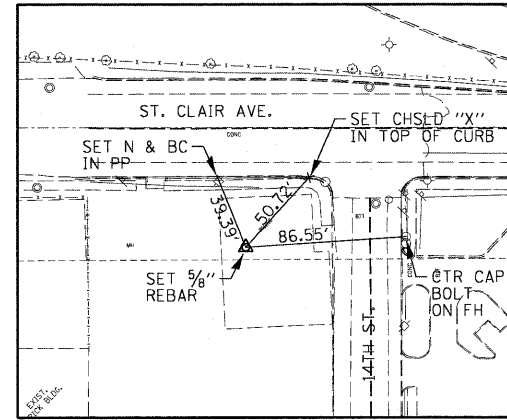


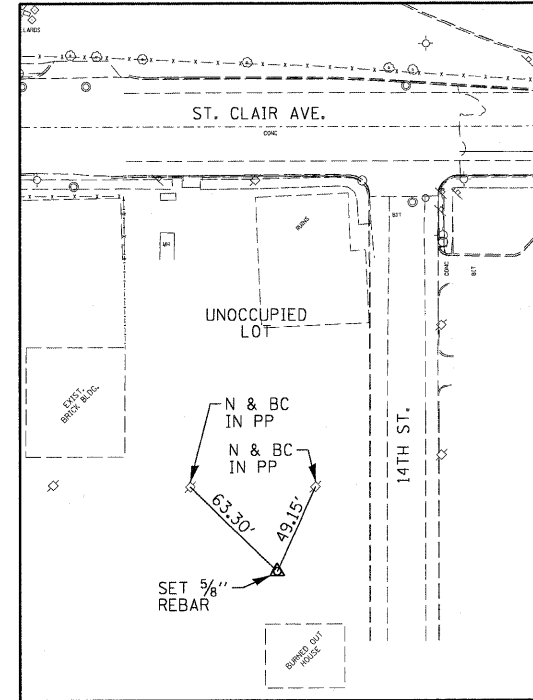
PEDESTRIAN BRIDGE  
STA. 9+63.46  
SET MAG NAIL IN CONCRETE



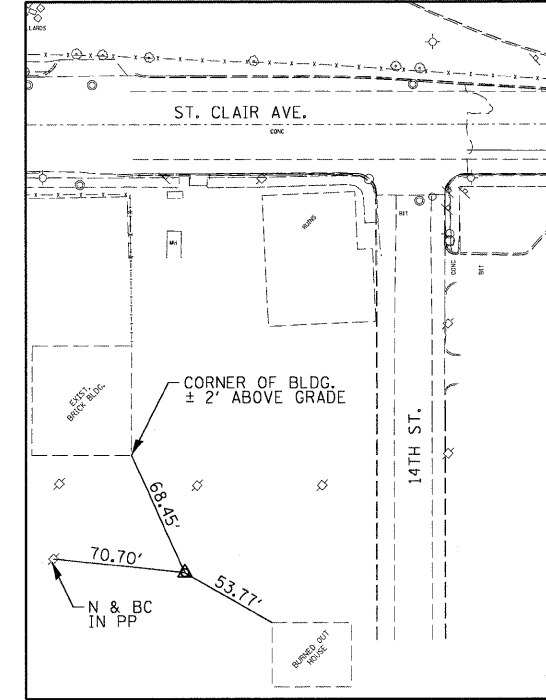
PEDESTRIAN BRIDGE  
10+47.02  
SET 5/8" I PIN / RED CAP



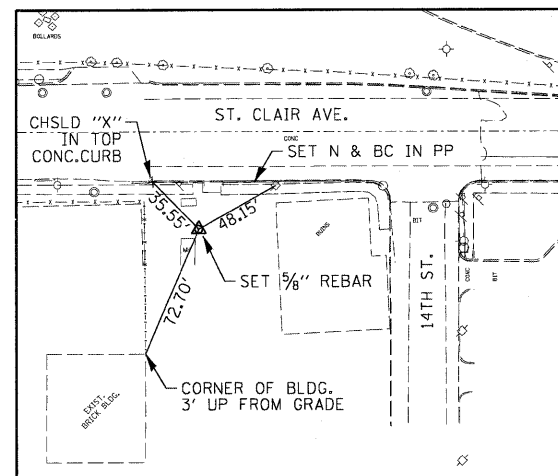
PEDESTRIAN BRIDGE  
12+21.93  
SET 5/8" I PIN / RED CAP



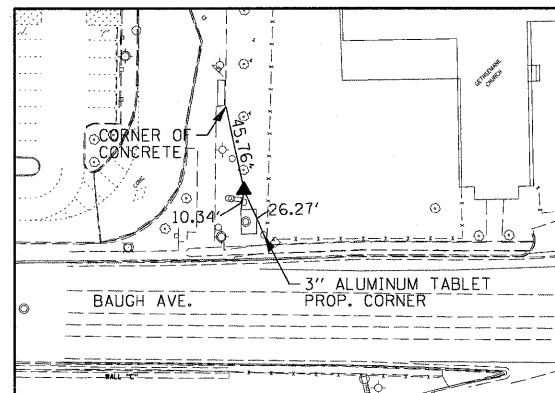
PEDESTRIAN BRIDGE  
12+77.93  
SET 5/8" R-BAR / RED CAP



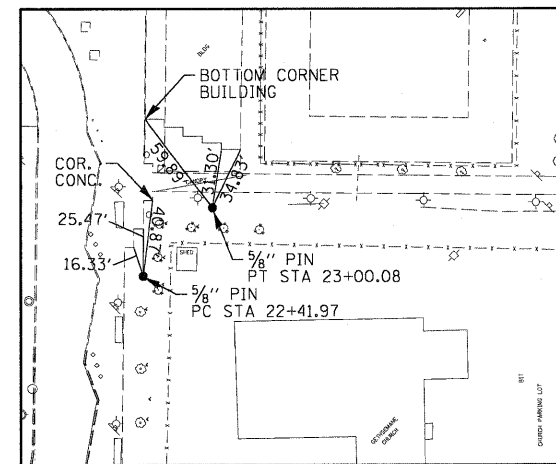
PEDESTRIAN BRIDGE  
STA. 14+64.97  
SET 5/8" I PIN / RED CAP



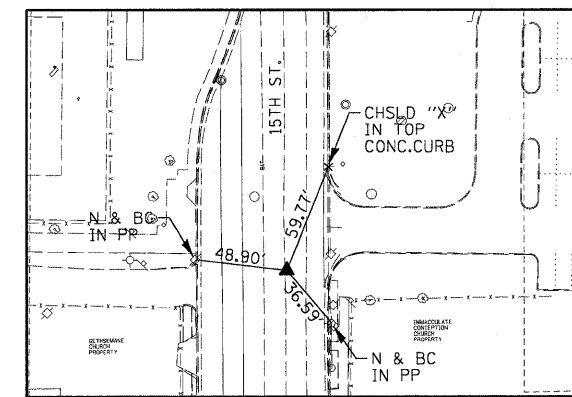
PEDESTRIAN BRIDGE  
STA. 20+96.00  
SET 5/8" R-BAR / RED CAP



PEDESTRIAN BRIDGE  
PC STA. 22+41.97 5/8" I PIN / RED CAP  
PC STA. 23+00.08 5/8" I PIN / RED CAP



PEDESTRIAN BRIDGE  
STA. 25+58.22 (PED) - MAG NAIL IN BIT. PVMT.  
= STA. 12+28.65 (15th) INSIDE CHSLD "X"



FILE NAME = DBTRI-76C47-shr-AlignTieBm-04.dgn

USER NAME = marank  
PLOT SCALE = 50,0000' / IN.  
PLOT DATE = 5/5/2009

DESIGNED - DJM  
DRAWN - DJM  
CHECKED - JL  
DATE - 05/01/09

REVISED -  
REVISED -  
REVISED -  
REVISED -

STATE OF ILLINOIS  
DEPARTMENT OF TRANSPORTATION

ALIGNMENT, TIES AND BENCHMARKS

SCALE: SHEET NO. 4 OF 4 SHEETS STA. TO STA.

F.A.I. RTE. 64	SECTION 82-1-1HBR	COUNTY ST. CLAIR	TOTAL SHEETS 93	SHEET NO. 17
FED. ROAD DIST. NO. ILLINOIS FED. AID PROJECT			CONTRACT NO. 76C47	