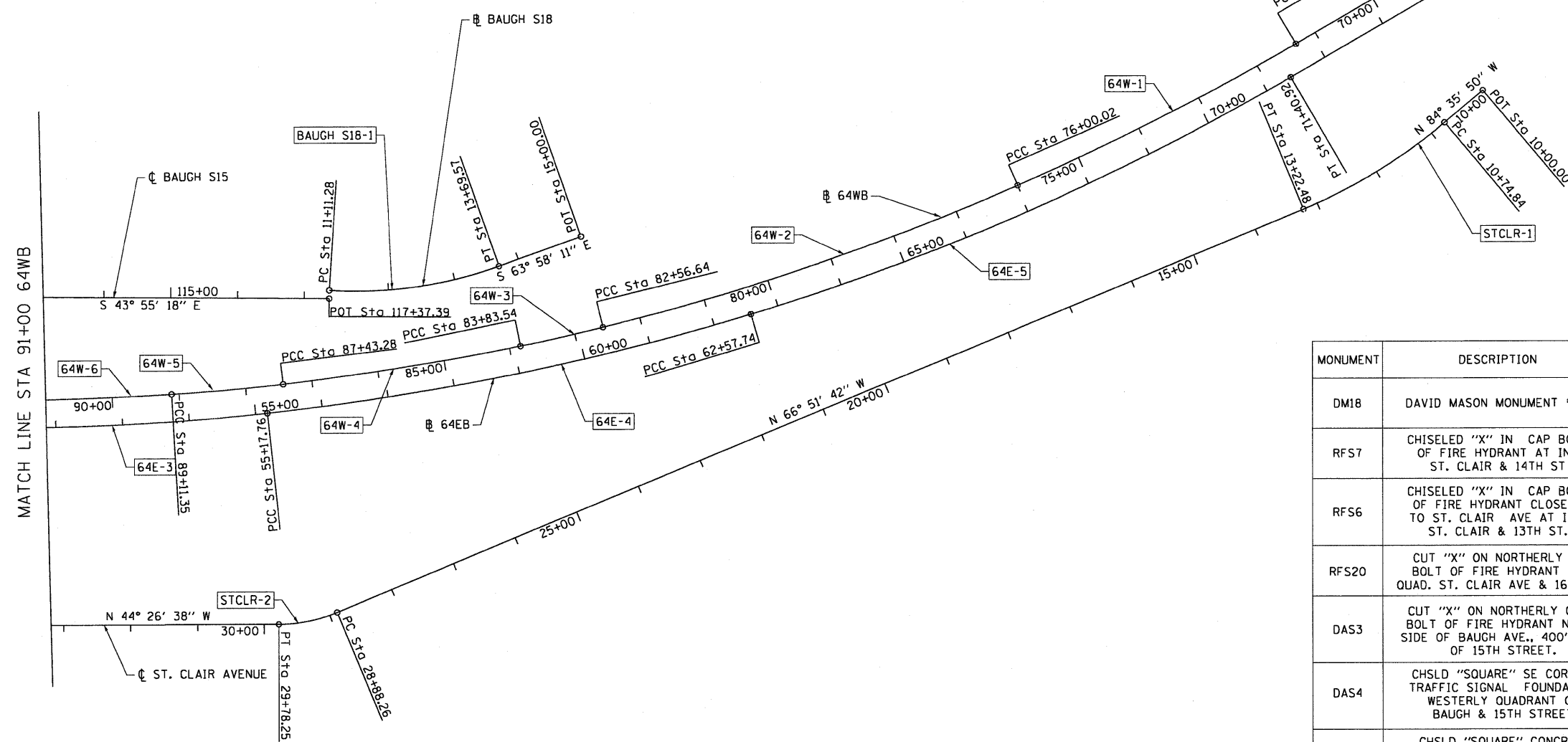


PROP. CURVE ST_CLR-1 PI STA. = 11+99.66 Δ = 17° 44' 08" (RT) D = 7° 09' 43" R = 800.00' T = 124.82' L = 247.64' E = 9.68' P.C. STA = 10+74.84 P.T. STA = 13+22.48	PROP. CURVE ST_CLR-2 PI STA. = 29+33.84 Δ = 22° 25' 05" (RT) D = 24° 54' 40" R = 230.00' T = 45.58' L = 89.99' E = 4.47' P.C. STA = 28+88.26 P.T. STA = 29+78.25	PROP. CURVE 64E-3 PI STA. = 53+19.44 Δ = 6° 19' 10" (LT) D = 1° 35' 30" R = 3,600.00' T = 198.73' L = 397.06' E = 5.48' P.C. STA = 51+20.71 P.T. STA = 55+17.76	PROP. CURVE 64E-4 PI STA. = 58+88.81 Δ = 10° 35' 58" (LT) D = 1° 25' 57" R = 4,000.00' T = 371.05' L = 739.97' E = 17.17' P.C. STA = 55+17.76 P.T. STA = 62+57.74	PROP. CURVE 64E-5 PI STA. = 67+01.39 Δ = 13° 31' 16" (LT) D = 1° 31' 51" R = 3,742.50' T = 443.65' L = 883.18' E = 26.20' P.C. STA = 62+57.74 P.T. STA = 71+40.92	PROP. CURVE BAUGH_S18-1 PI STA. = 12+42.25 Δ = 23° 23' 50" (LT) D = 9° 03' 32" R = 632.49' T = 130.97' L = 258.28' E = 13.42' P.C. STA = 11+11.28 P.T. STA = 13+69.57	PROP. CURVE 64W-1 PI STA. = 73+67.12 Δ = 6° 45' 48" (RT) D = 1° 27' 01" R = 3,950.66' T = 233.44' L = 466.34' E = 6.89' P.C. STA = 71+33.67 P.T. STA = 76+00.02	PROP. CURVE 64W-2 PI STA. = 79+29.11 Δ = 9° 39' 54" (RT) D = 1° 28' 19" R = 3,892.58' T = 329.09' L = 656.62' E = 13.89' P.C. STA = 76+00.02 P.T. STA = 82+56.64	PROP. CURVE 64W-3 PI STA. = 83+20.10 Δ = 2° 30' 26" (RT) D = 1° 58' 33" R = 2,900.00' T = 63.46' L = 126.91' E = 0.69' P.C. STA = 82+56.64 P.T. STA = 83+83.54		
PROP. CURVE 64W-4 PI STA. = 85+63.51 Δ = 4° 34' 49" (RT) D = 1° 16' 24" R = 4,500.00' T = 179.97' L = 359.74' E = 3.60' P.C. STA = 83+83.54 P.T. STA = 87+43.28	PROP. CURVE 64W-5 PI STA. = 88+27.34 Δ = 3° 30' 05" (RT) D = 2° 05' 01" R = 2,750.00' T = 84.06' L = 168.06' E = 1.28' P.C. STA = 87+43.28 P.T. STA = 89+11.35	PROP. CURVE 64W-6 PI STA. = 90+75.92 Δ = 3° 21' 59" (RT) D = 1° 01' 23" R = 5,600.16' T = 164.57' L = 329.05' E = 2.42' P.C. STA = 89+11.35 P.T. STA = 92+40.39								



BENCHMARKS

MONUMENT	DESCRIPTION	ELEVATION	ALIGNMENT	STATION	OFFSET
DM18	DAVID MASON MONUMENT #18	414.02	ST. CLAIR AVENUE	35+29	12.4' RT
RFS7	CHISELED "X" IN CAP BOLT OF FIRE HYDRANT AT INT. ST. CLAIR & 14TH ST	416.29	ST. CLAIR AVENUE	39+39	59.0' LT
RFS6	CHISELED "X" IN CAP BOLT OF FIRE HYDRANT CLOSEST TO ST. CLAIR AVE AT INT. ST. CLAIR & 13TH ST.	416.49	ST. CLAIR AVENUE	46+48	28.4' LT
RFS20	CUT "X" ON NORTHERLY CAP BOLT OF FIRE HYDRANT SW QUAD. ST. CLAIR AVE & 16TH ST.	415.29	ST. CLAIR AVENUE	29+83	30.7' LT
DAS3	CUT "X" ON NORTHERLY CAP BOLT OF FIRE HYDRANT NORTH SIDE OF BAUGH AVE., 400' EAST OF 15TH STREET.	416.26	BAUGH S	114+50	30.2' LT
DAS4	CHSLD "SQUARE" SE COR. OF TRAFFIC SIGNAL FOUNDATION WESTERLY QUADRANT OF BAUGH & 15TH STREET	415.74	BAUGH N	5+30	30.1' LT
WAR 6	CHSLD "SQUARE" CONCRETE FOUNDATION OF LIGHT POLE NORTH SIDE OF I-64 W.B. 50' EAST OF METROLINK BRIDGE	397.84	64 WB	105+26	49.6' RT