

INDEX OF SHEETS

- 1 COVER SHEET & HIGHWAY STANDARDS
- 2 GENERAL NOTES
- 3 SUMMARY OF QUANTITIES
- 4 TYPICAL SECTIONS
- 5 - 6 SCHEDULE OF QUANTITIES
- 7 - 8 TIE POINTS
- 9 - 11 PLAN VIEWS
- 12 - 13 DETAILS

STANDARDS

- 000001-05 STANDARD SYMBOLS, ABBREVIATIONS AND PATTERNS
- 667101-01 PERMANENT SURVEY MARKERS
- 701001-02 OFF-ROAD OPERATIONS 2L, 2W, MORE THAN 15' (4.5 m) AWAY
- 701006-03 OFF-ROAD OPERATIONS 2L, 2W, 15' (4.5 m) TO 24" (600 mm) FROM PAVEMENT EDGE
- 701011-02 OFF-ROAD MOVING OPERATIONS 2L, 2W, DAY ONLY
- 701301-03 LANE CLOSURE, 2L, 2W, SHORT TIME OPERATIONS
- 701306-02 LANE CLOSURE, 2L, 2W, SLOW MOVING OPERATIONS DAY ONLY, FOR SPEEDS ≥ 45 MPH
- 701311-03 LANE CLOSURE, 2L, 2W, MOVING OPERATIONS - DAY ONLY
- 701901-01 TRAFFIC CONTROL DEVICES
- 780001-02 TYPICAL PAVEMENT MARKINGS
- 781001-03 TYPICAL APPLICATIONS RAISED REFLECTIVE PAVEMENT MARKERS

MICROFILMED _____
 REEL NUMBER _____
 AWARDED _____
 RESIDENT ENGINEER _____
 AS BUILT CHANGES WERE MADE
 ON THE FOLLOWING SHEETS _____

J.U.L.I.E.
 JOINT UTILITY LOCATION INFORMATION FOR EXCAVATION
 1-800-892-0123
 OR 811

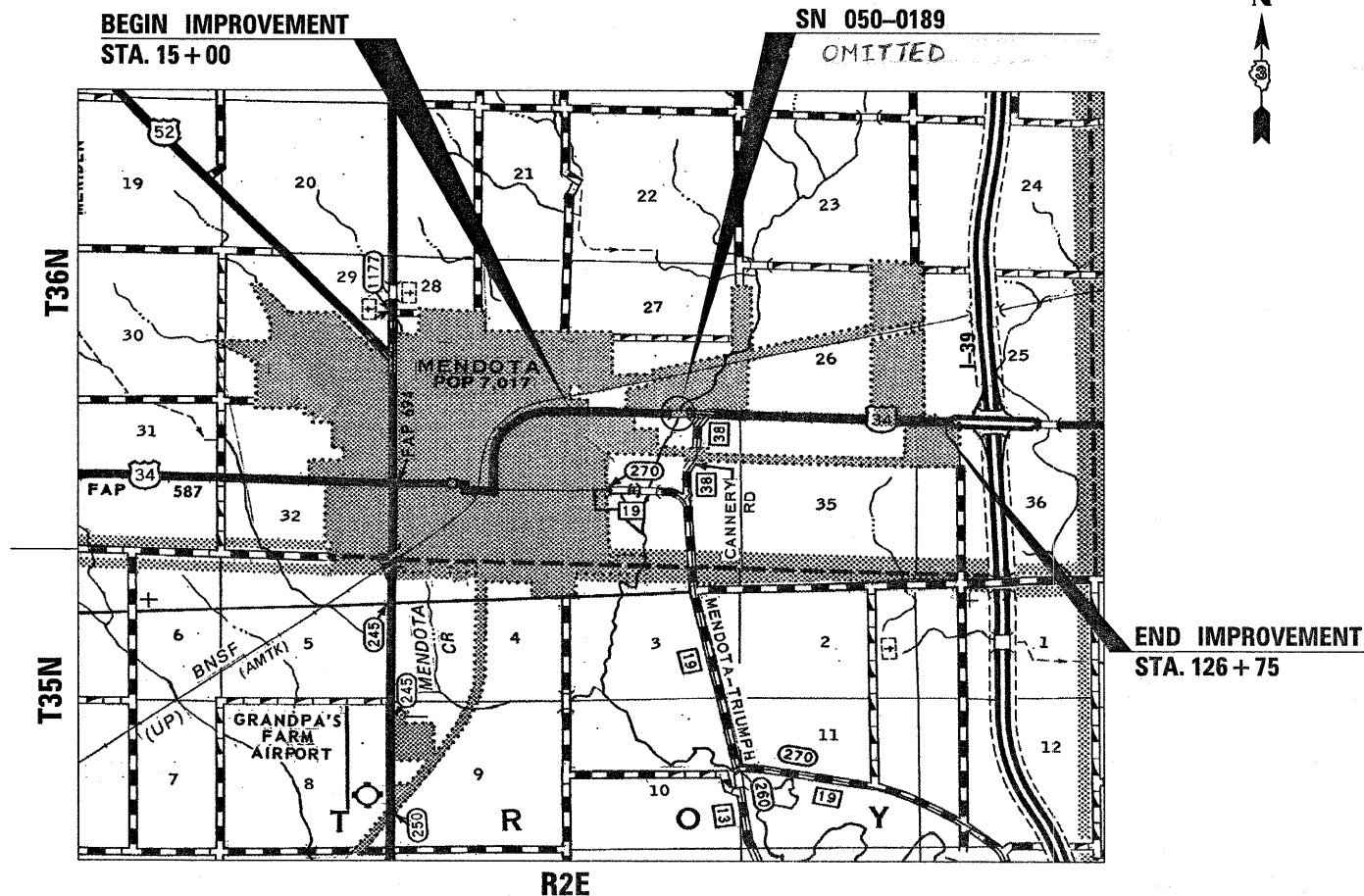
PROJECT ENGINEER: CRAIG REED
 UNIT CHIEF: BRAD DUNCAN
 TOWNSHIP: MENDOTA

CONTRACT NO. 66974

STATE OF ILLINOIS
 DEPARTMENT OF TRANSPORTATION
 DIVISION OF HIGHWAYS
**PROPOSED
 HIGHWAY PLANS**

FAP ROUTE 587 (US 34)
 SECTION (20)RS-5
PROJECT ACHPP-HPP-4094(003)
 3P MILLING AND RESURFACING
 LASALLE COUNTY

C-93-131-09

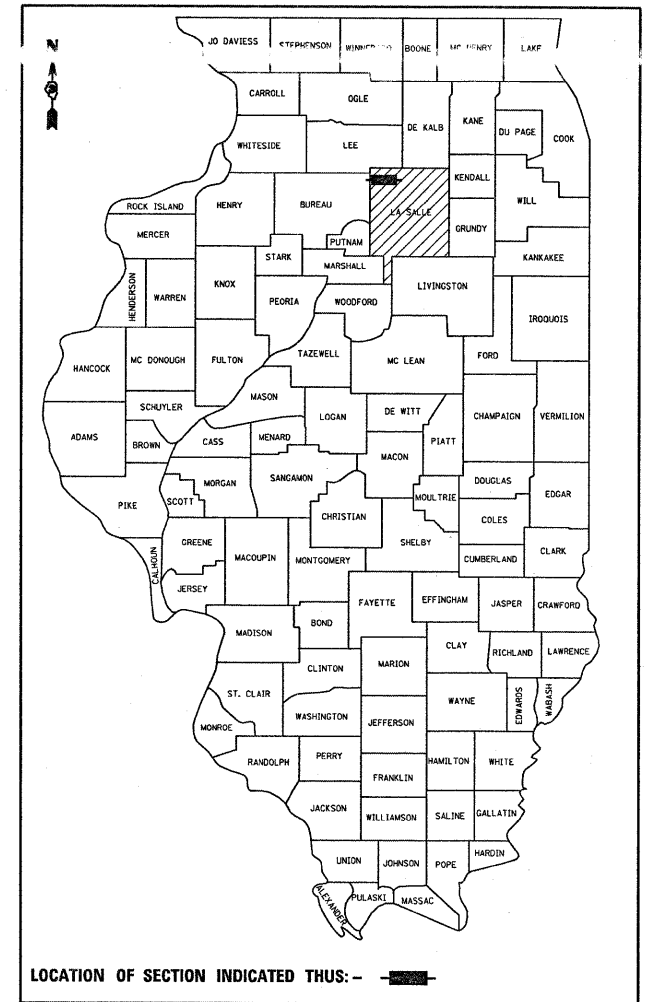


NOT TO SCALE

GROSS & NET LENGTH = 11175 FT. = 2.12 MILE

F.A.P. RTE.	SECTION	COUNTY	TOTAL SHEETS	SHEET NO.
587	(20)RS-5	LASALLE	13	1
		ILLINOIS	CONTRACT NO. 66974	

D-93-060-09



LOCATION OF SECTION INDICATED THUS: - [shaded box] -

MINOR ARTERIAL (RURAL)
 2009 ADT = 6500
 PV = 87% SU = 6% MU = 7%

STATE OF ILLINOIS
 DEPARTMENT OF TRANSPORTATION
 DIVISION OF HIGHWAYS

SUBMITTED April 9 20 09
Henry Brown
 DEPUTY DIRECTOR OF HIGHWAYS, REGION ENGINEER

May 8, 20 09
Charles J. Ingersoll
 ENGINEER OF DESIGN AND ENVIRONMENT

May 8, 20 09
Christine M. Reed
 DIRECTOR OF HIGHWAYS, CHIEF ENGINEER

PRINTED BY THE AUTHORITY
 OF THE STATE OF ILLINOIS

GENERAL NOTES

THE THICKNESS OF HMA SHOWN ON THE PLANS IS THE NOMINAL THICKNESS. DEVIATIONS FROM THE NOMINAL THICKNESS WILL BE PERMITTED WHEN SUCH DEVIATIONS OCCUR DUE TO IRREGULARITIES IN THE EXISTING SURFACE OR BASE ON WHICH THE HMA IS PLACED.

THE HMA SURFACE OF ALL MAILBOX TURNOUTS, PRIVATE ENTRANCES, COMMERCIAL ENTRANCES, AND SIDE ROADS SHALL BE MADE NEATLY, IN A WORKMANLIKE MANNER, AND SHALL ACCURATELY CONFORM TO THE SHAPES AND DIMENSIONS SHOWN ON THE PLAN DETAILS. IF REQUIRED BY THE ENGINEER, THE CONTRACTOR SHALL BE REQUIRED TO SAW CUT THE HMA SURFACE TO CONFORM TO THE SHAPES AND DIMENSIONS SHOWN ON THE PLAN DETAILS. THIS WORK SHALL BE INCLUDED IN THE COST OF THE HMA SURFACE.

THE ENGINEER WILL BE THE SOLE JUDGE CONCERNING CURING TIME FOR THE VARIOUS HMA LIFTS.

SEEDING SHALL NOT BE PERMITTED AT ANY TIME WHEN THE GROUND IS FROZEN, WET, OR IN AN UNTILLABLE CONDITION. LOCATIONS TO BE SEEDED WILL BE DETERMINED BY THE ENGINEER.

ON EXISTING PAVEMENT WHICH MAY BE SUPERELEVATED, THE NEW HMA PAVEMENT SHALL BE BUILT WITH THE SAME SUPERELEVATION UNLESS NEW SUPERELEVATION RATES ARE GIVEN ON THE PLANS.

ANY REFERENCE TO A STANDARD IN THESE PLANS SHALL BE INTERPRETED TO MEAN THE EDITION AS INDICATED BY THE SUBNUMBER SHOWN IN THE LIST OF STANDARDS OR THE COPY INCLUDED IN THESE PLANS.

THE FOLLOWING RATES OF APPLICATION HAVE BEEN USED IN CALCULATING PLAN QUANTITIES:

GRANULAR MATERIALS	2.05	TONS / CU YD
BIT MATERIALS (PRIME COAT) ON AGGREGATE BASES	0.375	GAL / SQ YD
BITUMINOUS MATERIALS (PRIME COAT)	0.08	GAL / SQ YD
FOR ADDITIONAL HMA LIFTS "FOG COAT"	0.05	GAL / SQ YD
AGGREGATE PRIME COAT	0.002	TONS / SQ YD
HMA RESURFACING	112	LBS / SQ YD / IN
SHORT TERM PAVEMENT MARKING	10	FT /100 FT OF APPLICATION
MIX FOR CRACKS, JTS & FLGWYS	0.0003	TONS / SQ YD
LEVEL BINDER (HAND METHOD)	0.0005	TONS / SQ YD

THE CONTRACTOR SHALL CONTACT JULIE AT LEAST 48 HOURS PRIOR TO EXCAVATION TO DETERMINE WHICH UTILITIES ARE IN THE AREA.

STATE OF ILLINOIS
DEPARTMENT OF TRANSPORTATION
DISTRICT THREE

PREPARED BY: *R. J. M.*
DISTRICT STUDIES & PLANS ENGINEER

DATE: 4.09.09

EXAMINED BY: *[Signature]*
DISTRICT CONSTRUCTION ENGINEER

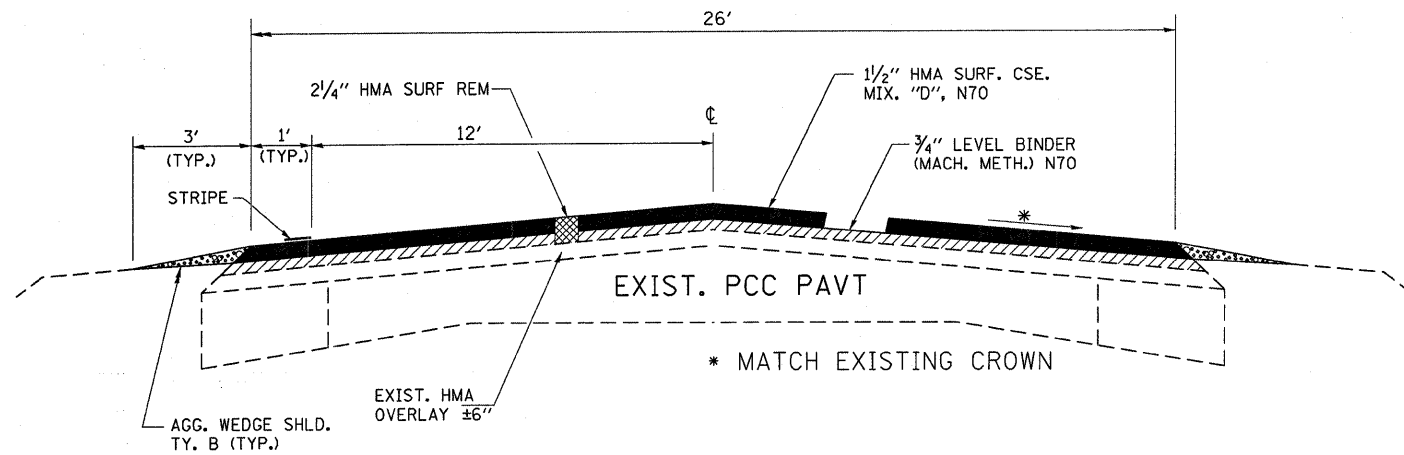
[Signature]
DISTRICT MATERIALS ENGINEER

[Signature]
DISTRICT OPERATIONS ENGINEER

FILE NAME: <u>ca:\pwr\work\pwr\dca\duncanbd\0366974-shr-cover.dgn</u>	USER NAME: <u>duncanbd</u>	DESIGNED: <u>-</u>	REVISED: <u>-</u>	STATE OF ILLINOIS DEPARTMENT OF TRANSPORTATION	GENERAL NOTES	F.A.P. RTE.:	SECTION:	COUNTY:	TOTAL SHEETS:	SHEET NO.:	
PLOT SCALE: <u>50.0000' / IN.</u>	CHECKED: <u>-</u>	REVISED: <u>-</u>	587			(20)RS-5	LASALLE	13	2		
PLOT DATE: <u>Apr 07, 2009 - 09:23:40 AM</u>	DATE: <u>-</u>	REVISED: <u>-</u>	CONTRACT NO. 66974								
						ILLINOIS FED. AID PROJECT					
						SCALE:	SHEET NO. OF SHEETS	STA. TO STA.			

SUMMARY OF QUANTITIES				80% FEDERAL 20% STATE
CODE NO.	ITEM	CONSTRUCTION CODE TYPE:		1000
		UNIT	TOTAL QUANTITY	URBAN DEKALB ROADWAY
20400800	FURNISHED EXCAVATION	CU YD	10	10
25100630	EROSION CONTROL BLANKET	SQ YD	150	150
40600100	BITUMINOUS MATERIALS (PRIME COAT)	GALLON	4716	4716
40600300	AGGREGATE (PRIME COAT)	TON	72	72
40600400	MIXTURE FOR CRACKS, JOINTS, AND FLANGEWAYS	TON	10	10
40600535	LEVELING BINDER (HAND METHOD), N70	TON	17	17
40600635	LEVELING BINDER (MACHINE METHOD), N70	TON	1436	1436
40600895	CONSTRUCTING TEST STRIP	EACH	1	1
40600990	TEMPORARY RAMP	SQ YD	200	200
40603340	HOT-MIX ASPHALT SURFACE COURSE, MIX 3" D, N70	TON	2898	2898
40800050	INCIDENTAL HOT-MIX ASPHALT SURFACING	TON	385	385
44000155	HOT-MIX ASPHALT SURFACE REMOVAL, 1 1/2"	SQ YD	314	314
44000158	HOT-MIX ASPHALT SURFACE REMOVAL, 2 1/4"	SQ YD	37263	37263
48102100	AGGREGATE WEDGE SHOULDER, TYPE B	TON	290	290
66700205	PERMANENT SURVEY MARKERS, TYPE I	EACH	7	7
67100100	MOBILIZATION	L SUM	1	1
70100460	TRAFFIC CONTROL AND PROTECTION, STANDARD 701306	L SUM	1	1
70300100	SHORT-TERM PAVEMENT MARKING	FOOT	3776	3776
70300610	TEMPORARY PAINT PAVEMENT MARKING, LETTERS AND SYMBOLS	SQ FT	187.2	187.2
70300625	TEMPORARY PAINT PAVEMENT MARKING LINE 4"	FOOT	22475	22475
70300635	TEMPORARY PAINT PAVEMENT MARKING LINE 6"	FOOT	5600	5600
70300640	TEMPORARY PAINT PAVEMENT MARKING LINE 8"	FOOT	910	910
70301000	WORK ZONE PAVEMENT MARKING REMOVAL	SQ FT	415	415
*78000100	THERMOPLASTIC PAVEMENT MARKING - LETTERS AND SYMBOLS	SQ FT	93.6	93.6
*78000200	THERMOPLASTIC PAVEMENT MARKING - LINE 4"	FOOT	22374	22374
*78000400	THERMOPLASTIC PAVEMENT MARKING - LINE 6"	FOOT	2800	2800
*78000500	THERMOPLASTIC PAVEMENT MARKING - LINE 8"	FOOT	455	455
*78100100	RAISED REFLECTIVE PAVEMENT MARKER	EACH	150	150
78300200	RAISED REFLECTIVE PAVEMENT MARKER REMOVAL	EACH	140	140
Z0021700	EXPANSION JOINT REHABILITATION	FOOT	104	104

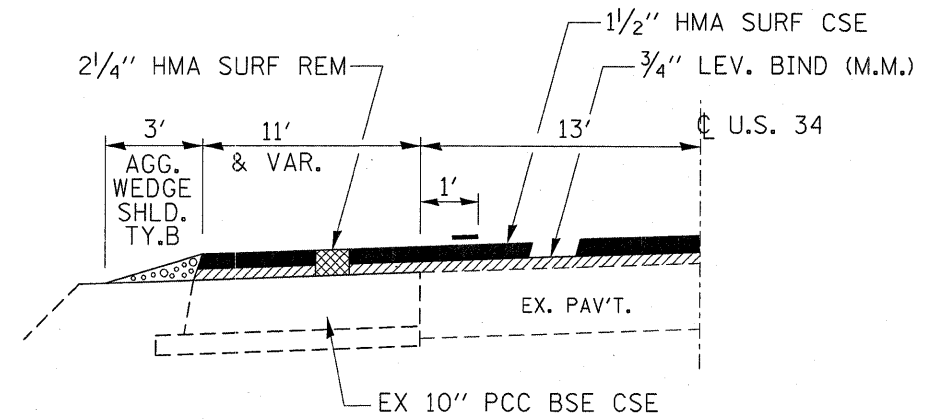
*SPECIALTY ITEMS



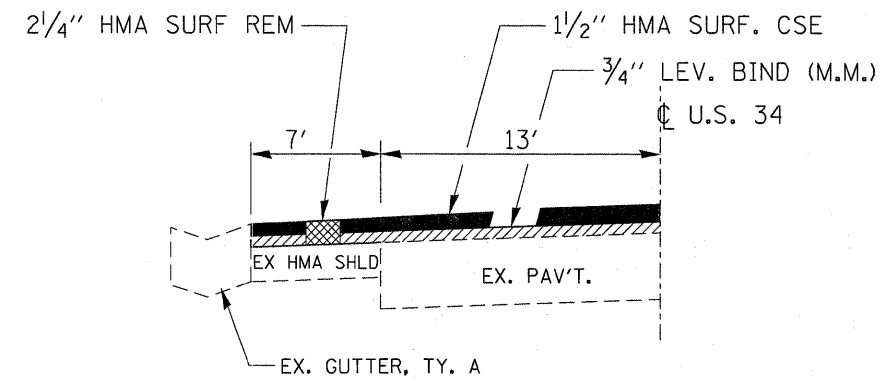
TYPICAL SECTION 1

STA. 15+00 TO STA. 40+00
STA. 60+00 TO STA. 126+75

INCLUDES TURN LANES @ DEL MONTE

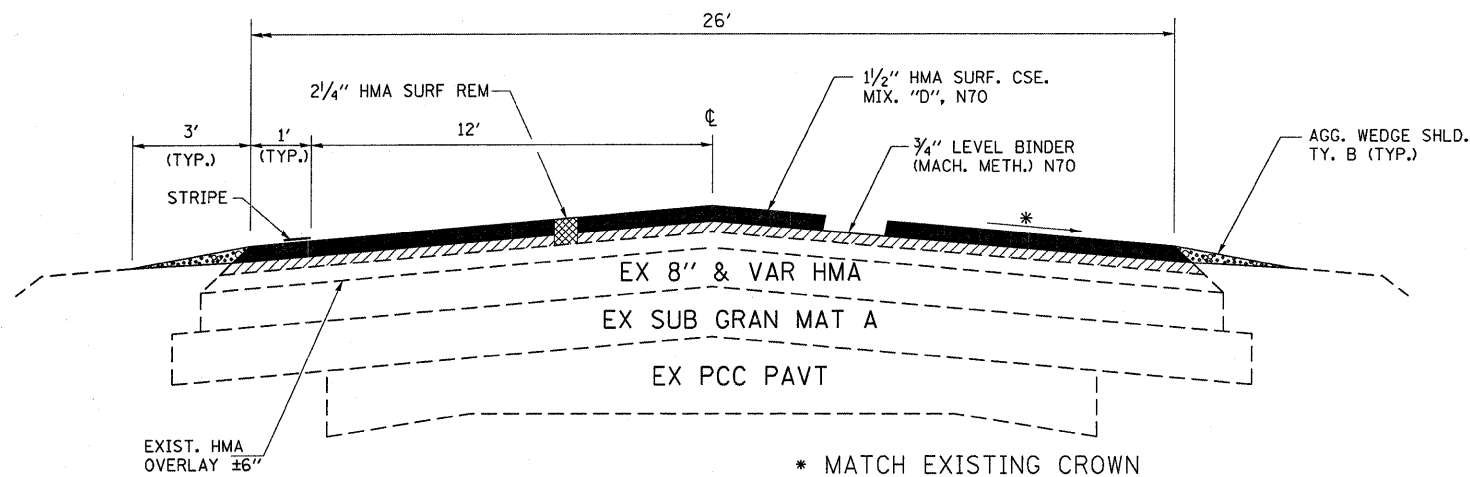


TURN LANES @ DEL MONTE



SHOULDER DETAIL

STA. 58.64 TO STA. 62+40



TYPICAL SECTION 2

STA. 40+00 TO STA. 60+00

SN 050-0189 OMITTED
STA. 54+77.5 TO STA. 55+46.5

INCLUDES TURN LANES @ DEL MONTE

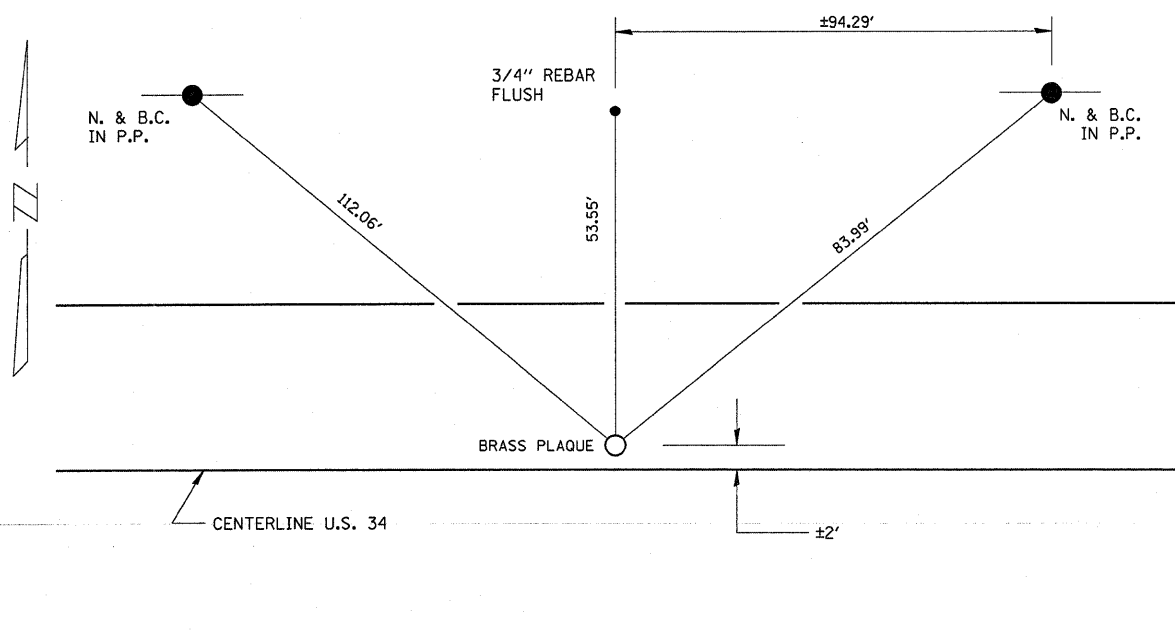
MIXTURE TABLE

	HMA SURFACE	HMA LEVEL BINDER	INCIDENTAL HMA SURFACE
PG GRADE	PG64-22	PG64-22	PG64-22
MAX % RAP ALLOWABLE**	10%	15%	10%
DESIGN AIR VOIDS	4.0% @ N70	4.0% @ N70	4.0% @ N70
MIXTURE COMPOSITION	IL 12.5 OR IL 9.5	IL 9.5	IL 12.5 OR IL 9.5
FRICION AGGREGATE	MIXTURE D		MIXTURE D
DENSITY TEST METHOD	CORRELATION	SATISFACTION OF ENGINEER	SATISFACTION OF ENGINEER

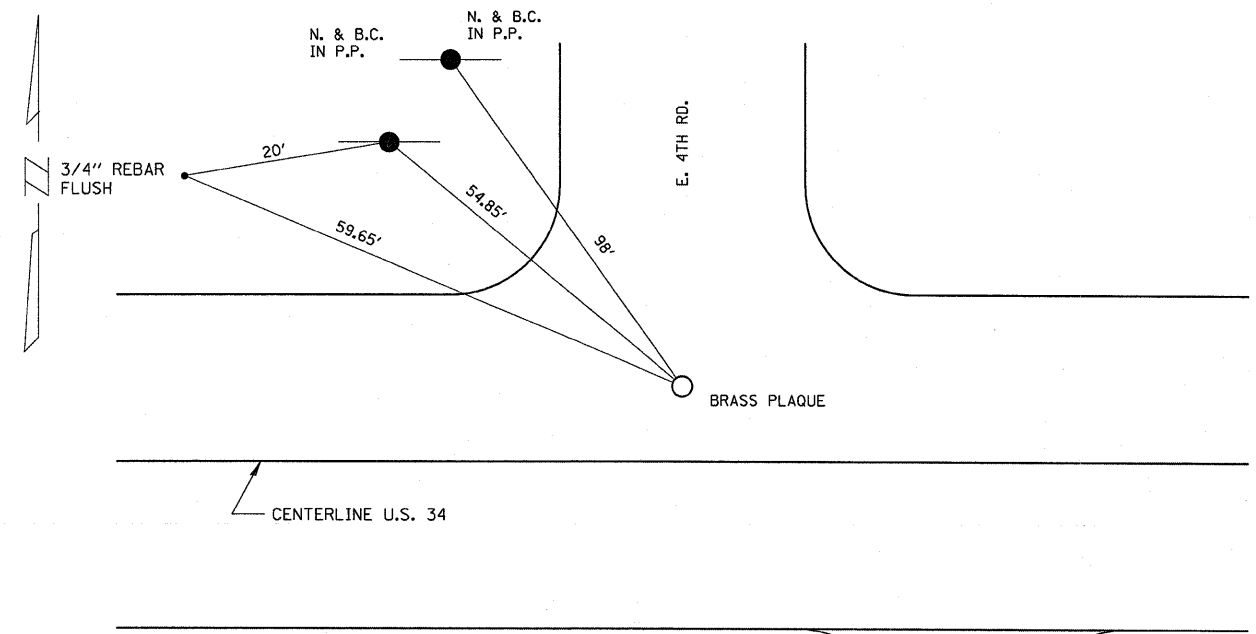
** IF RAP OPTION IS SELECTED, THE ASPHALT CEMENT GRADE MAY NEED TO BE ADJUSTED. THIS WILL BE DETERMINED BY THE ENGINEER.

PAVEMENT MARKINGS											
STA. TO STA.	THERMOPLASTIC					RAISED REFL PAVT MARK EACH	TEMPORARY PAINT				SHORT TERM (3 APP) FOOT
	4"		6"		8"		LETTERS & SYMBOLS SQ FT	LETTERS & SYMBOLS			
	YELLOW FOOT	WHITE FOOT	YELLOW FOOT	WHITE FOOT	8"			(2 APPLICATIONS) SQ FT			
15+00 - 38+50											
CENTERLINE			590			29		1180			705
NO PASSING ZONE	50						22,475				
EDGE LINE		4700									
38+50 - 50+76											
CENTERLINE			310			16		620			694.2
EDGE LINE		2426									
TURN LANES (3)				455	93.6	10			910	187.2	96.9
50+76 - 126+75											
CENTERLINE			1900			95		3800			2279.7
EDGE LINE		15198									
TOTAL	50	22324	2800	455	93.6	150	22,475	5600	910	187.2	3776

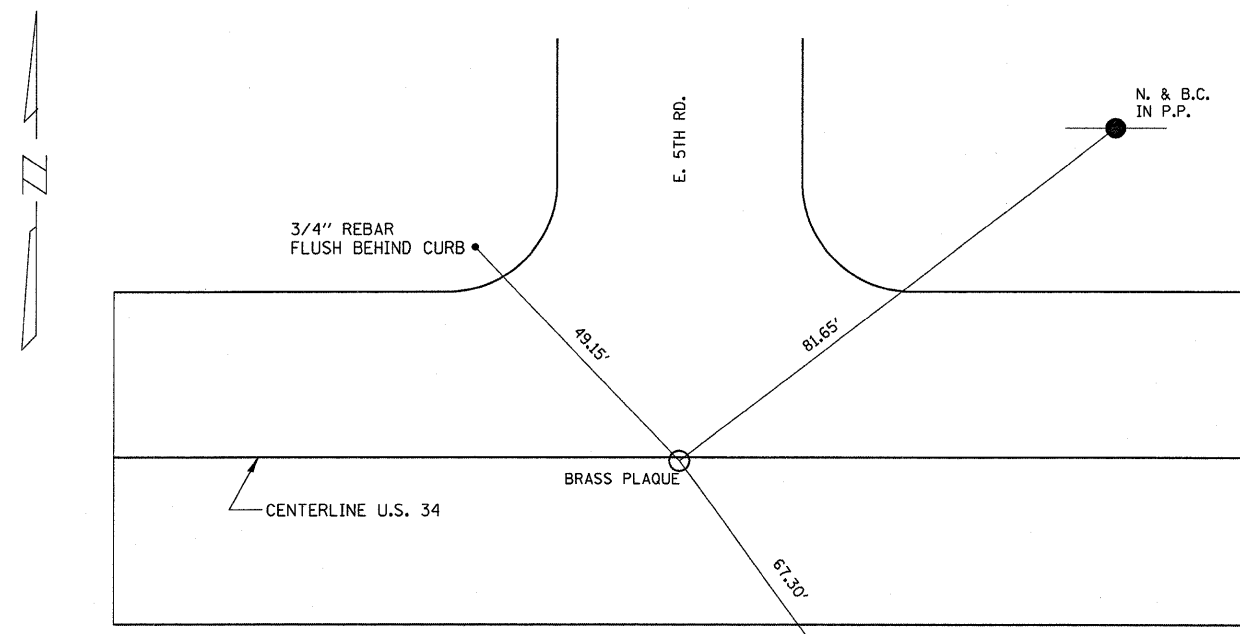
FILE NAME =	USER NAME = duncanbd	DESIGNED -	REVISED -	STATE OF ILLINOIS DEPARTMENT OF TRANSPORTATION	SCHEDULE OF QUANTITIES				F.A.P. RTE.	SECTION	COUNTY	TOTAL SHEETS	SHEET NO.		
c:\pw_work\FWIDOT\DUNCANBD\0135021\0365974-shr-details.DGN		DRAWN -	REVISED -		SCALE:	SHEET NO.	OF	SHEETS	STA.	TO STA.	587	(20)RS-5	LASALLE	13	6
PLOT SCALE = 50.0000' / IN.		CHECKED -	REVISED -		CONTRACT NO. 66974										
PLOT DATE = Apr 09, 2009 - 11:44:18 AM		DATE -	REVISED -		ILLINOIS FED. AID PROJECT										



PERMANENT SURVEY MARKER
 N.1/4 COR. SEC. 35
 BRONZE PLAQUE FOUND
 REPLACE WITH BRONZE PLAQUE



PERMANENT SURVEY MARKER
 N.E. COR. SEC. 34
 BRONZE PLAQUE FOUND
 REPLACE WITH BRONZE PLAQUE



PERMANENT SURVEY MARKER
 N.E. COR. SEC. 35
 BRASS PLAQUE FOUND
 REPLACE WITH BRONZE PLAQUE

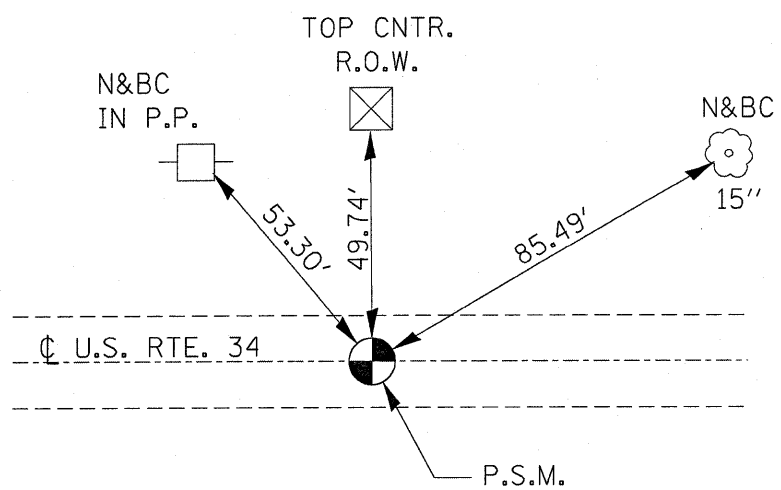
NOTE: LOCATION OF TIES AND SURVEY MARKERS ARE BASED ON A PREVIOUS METRIC RESURFACING PROJECT. LOCATION AND DISTANCES TO BE VERIFIED IN THE FIELD. THE BUREAU OF LAND ACQUISITION TO BE CONTACTED PRIOR TO INSTALLATION TO VERIFY ACTUAL NUMBER OF SURVEY MARKERS NEEDED. SECTION CORNER MARKERS MAY BE REQUIRED PER STANDARD SPECIFICATIONS.

FILE NAME =	USER NAME = duncanbd	DESIGNED -	REVISED -
c:\pwork\PWIDOT\DUNCANBD\0135021\036974-shrtdetails.DGN		DRAWN -	REVISED -
		CHECKED -	REVISED -
		DATE -	REVISED -

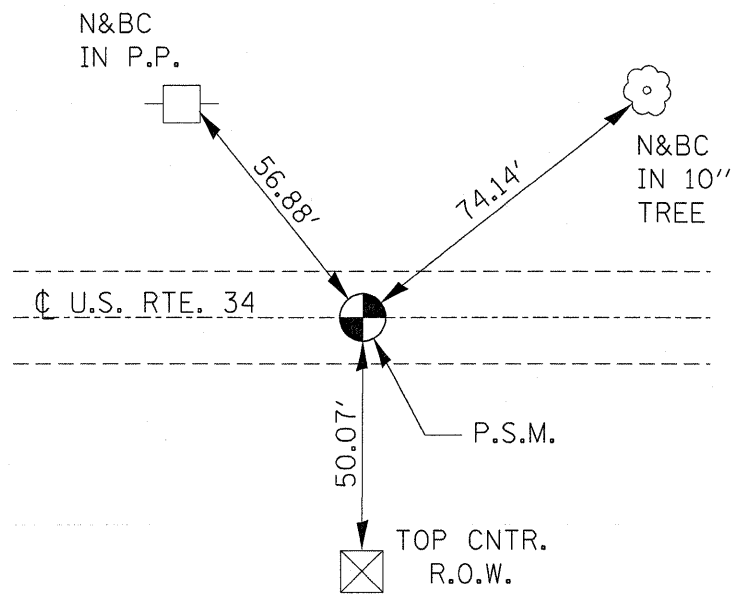
STATE OF ILLINOIS
 DEPARTMENT OF TRANSPORTATION

TIE POINTS			
SCALE:	SHEET NO.	OF SHEETS	STA. TO STA.

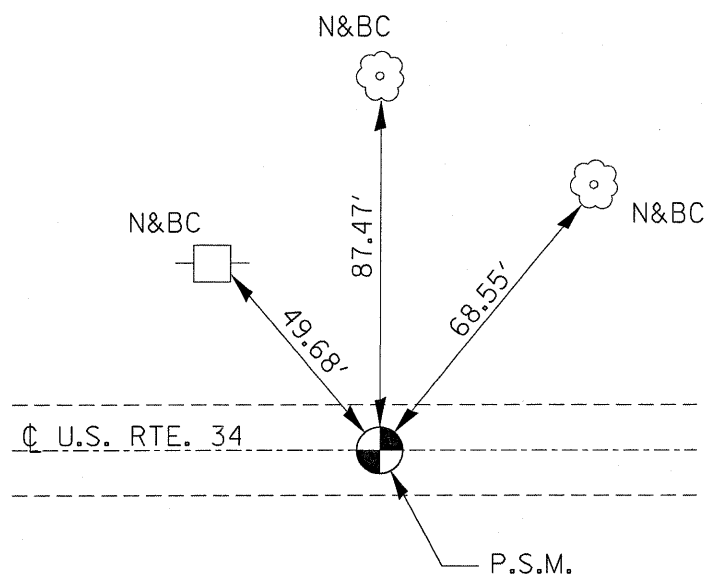
F.A.P. RTE.	SECTION	COUNTY	TOTAL SHEETS	SHEET NO.
587	(20)RS-5	LASALLE	13	7
CONTRACT NO. 66974				
ILLINOIS FED. AID PROJECT				



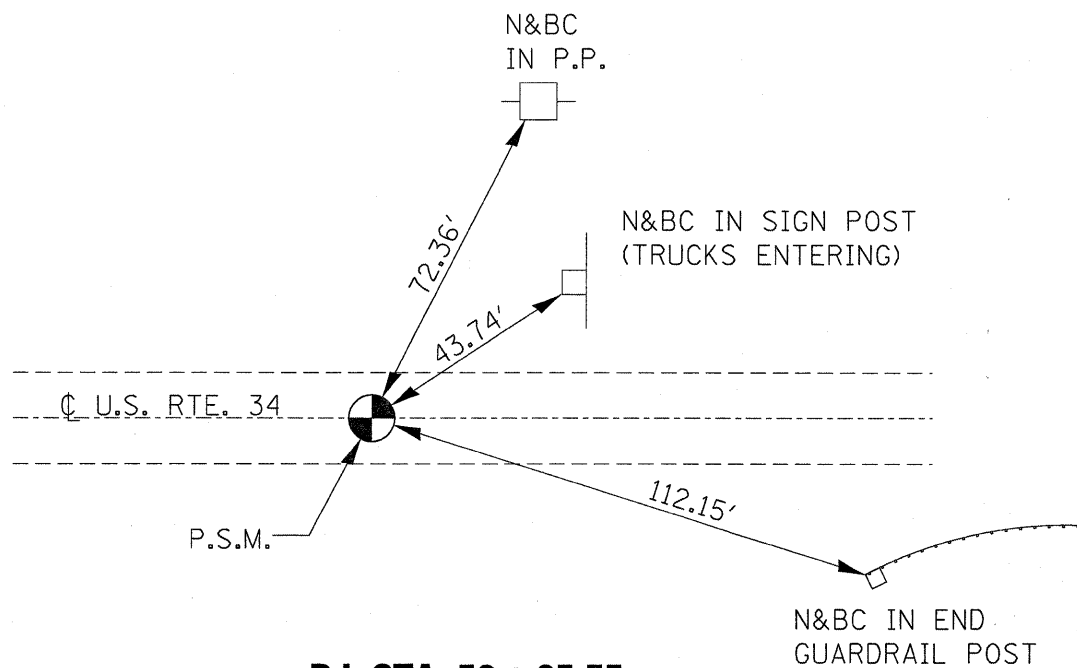
P.I. STA. 22 + 06.22



P.I. STA. 40 + 05.37



P.I. STA. 44 + 05.14



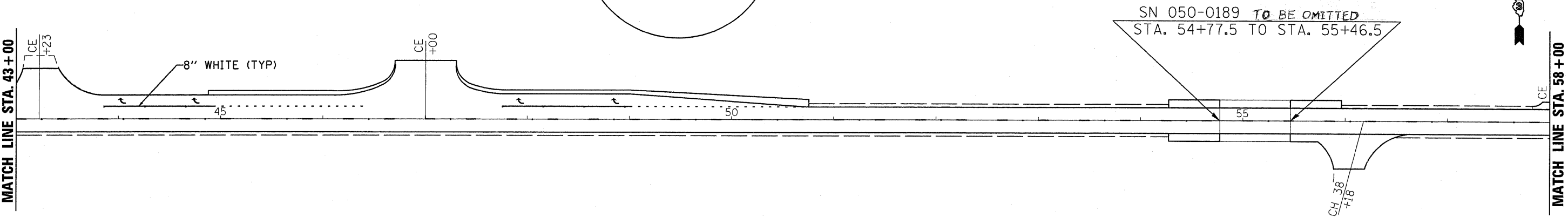
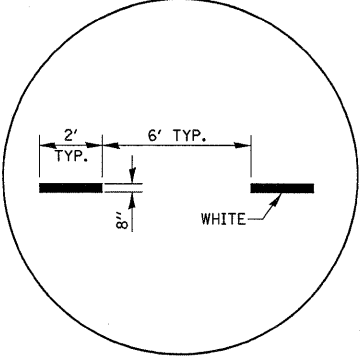
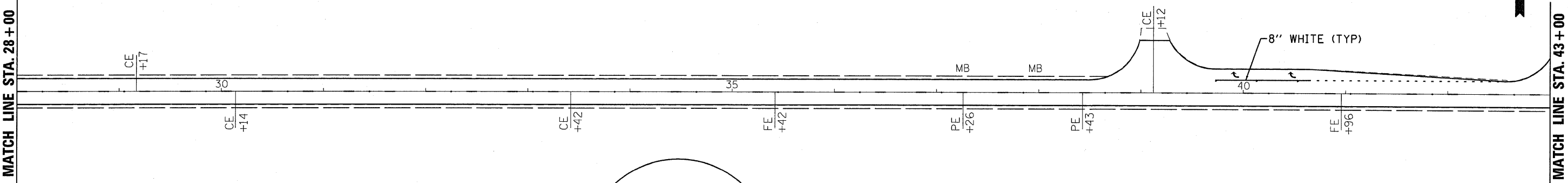
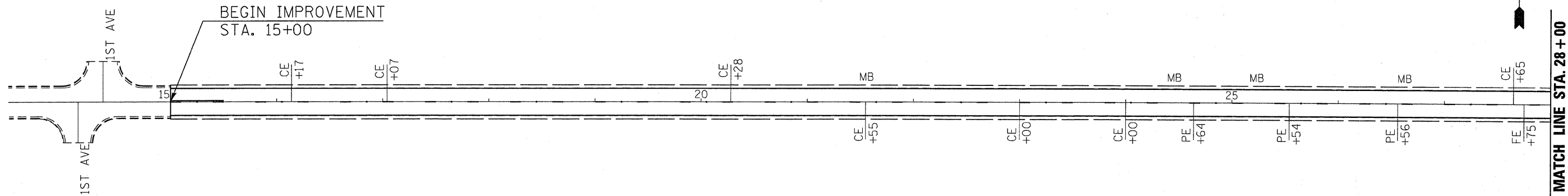
P.I. STA. 52 + 05.75

FILE NAME =	USER NAME = duncanbd	DESIGNED -	REVISED -
c:\pw_work\FWIDOT\DUNCANBD\0135021\0365974-sht-details.DGN		DRAWN -	REVISED -
	PLOT SCALE = 50.0000' / IN.	CHECKED -	REVISED -
	PLOT DATE = Apr 09, 2009 - 11:44:42 AM	DATE -	REVISED -

**STATE OF ILLINOIS
DEPARTMENT OF TRANSPORTATION**

TIE POINTS			
SCALE:	SHEET NO.	OF SHEETS	STA. TO STA.

F.A.P. RTE. 587	SECTION (20)RS-5	COUNTY LASALLE	TOTAL SHEETS 13	SHEET NO. 8
CONTRACT NO. 66974				
ILLINOIS FED. AID PROJECT				



SN 050-0189 TO BE OMITTED
STA. 54+77.5 TO STA. 55+46.5

CH 38
+18

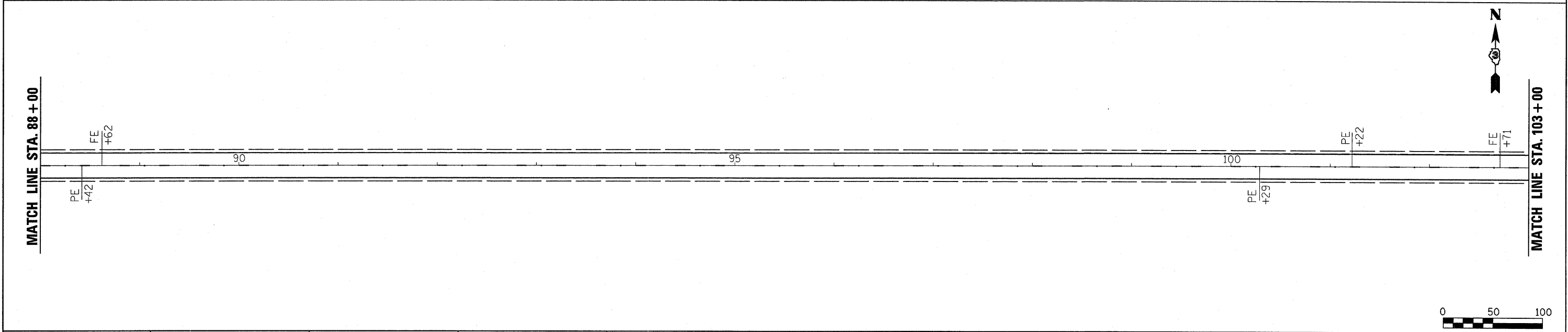
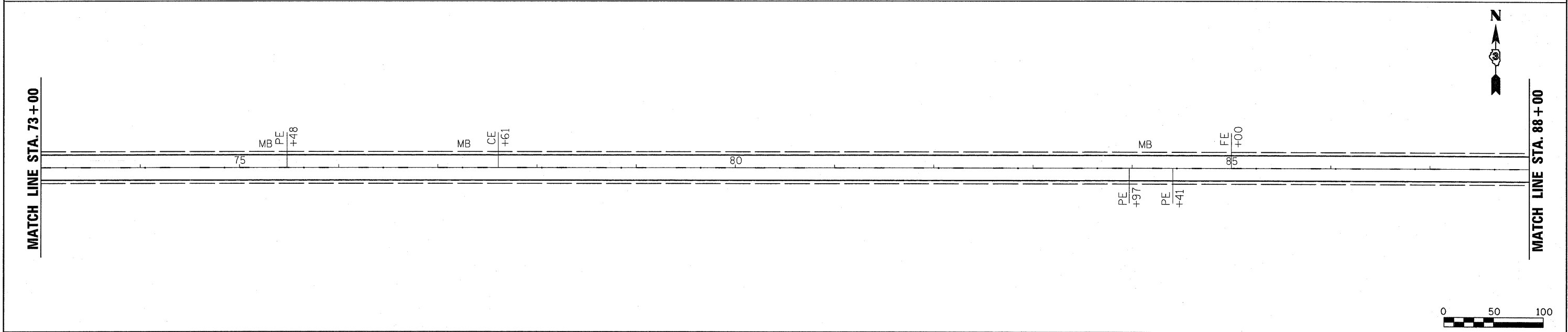
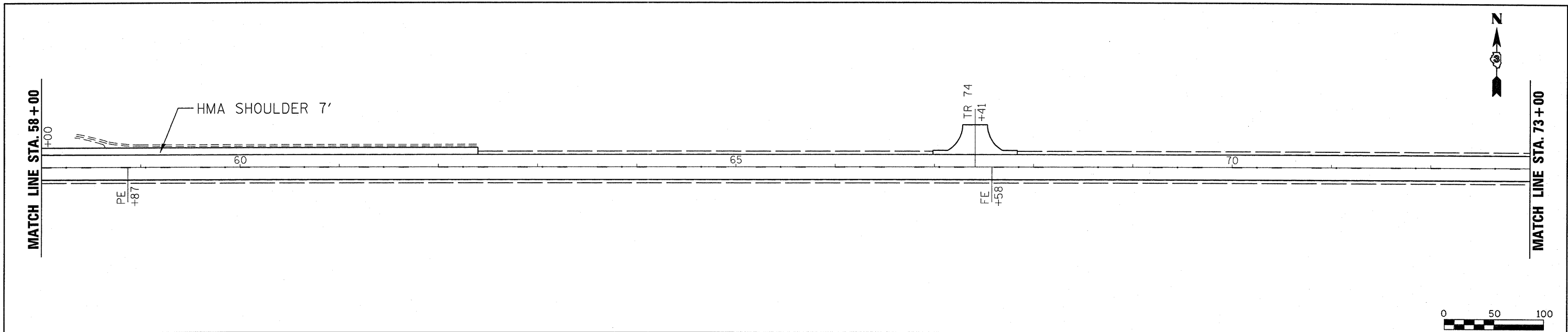
FILE NAME =	USER NAME = duncanbd	DESIGNED -	REVISED -
c:\pwork\p\10DOT\DUNCANBD\0135021\0385974-shr-details.DGN		DRAWN -	REVISED -
PLOT SCALE = 50,0000' / IN.		CHECKED -	REVISED -
PLOT DATE = Apr 09, 2009 - 11:44:53 AM		DATE -	REVISED -

**STATE OF ILLINOIS
DEPARTMENT OF TRANSPORTATION**

PLAN VIEW

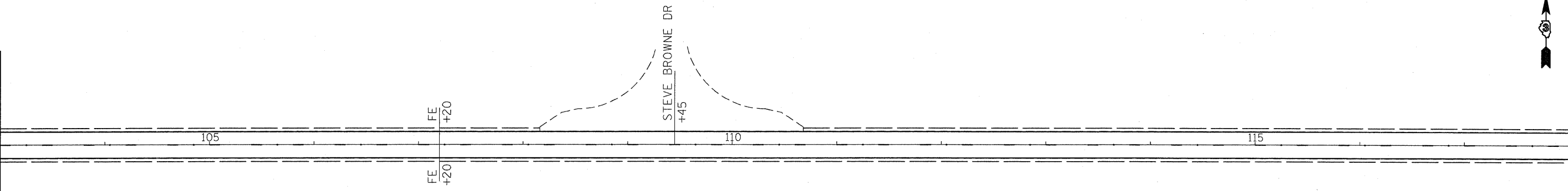
SCALE: 1=50 SHEET NO. OF SHEETS STA. 15+00 TO STA. 58+00

F.A.P. RTE.	SECTION	COUNTY	TOTAL SHEETS	SHEET NO.
587	(20)RS-5	LASALLE	13	9
CONTRACT NO. 66974				
ILLINOIS FED. AID PROJECT				

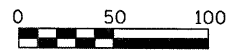


FILE NAME =	USER NAME = duncanbd	DESIGNED -	REVISED -	STATE OF ILLINOIS DEPARTMENT OF TRANSPORTATION	PLAN VIEW			F.A.P. RTE.	SECTION	COUNTY	TOTAL SHEETS	SHEET NO.			
ct:\pw\work\PWIDOT\DUNCANBD\d0135021\0365974-sht-details.DGN		DRAWN -	REVISED -		SCALE: 1=50	SHEET NO.	OF	SHEETS	STA. 58+00	TO STA. 103+00	587	(20)RS-5	LASALLE	13	10
		CHECKED -	REVISED -		CONTRACT NO. 66974										
		DATE -	REVISED -		ILLINOIS FED. AID PROJECT										

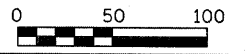
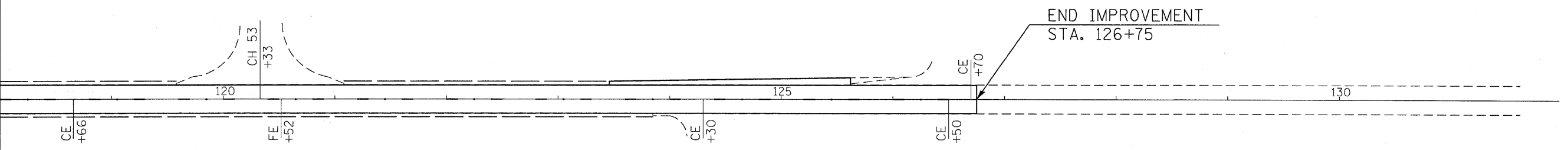
MATCH LINE STA. 103 + 00



MATCH LINE STA. 118 + 00



MATCH LINE STA. 118 + 00



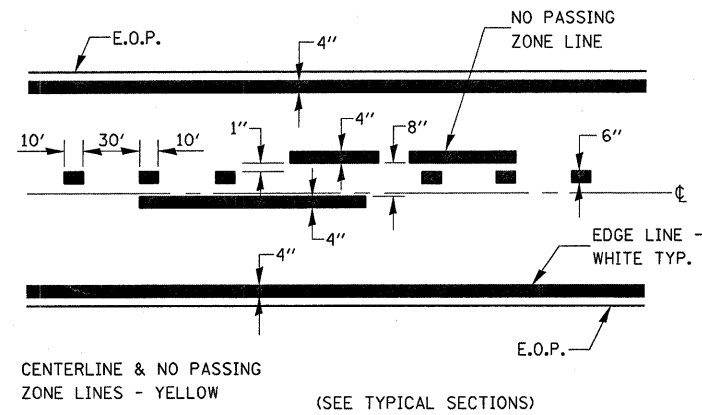
FILE NAME =	USER NAME = duncanbd	DESIGNED -	REVISED -
ca:\pw_work\PWIDOT\DUNCANBD\0135021\0365974-sht-details.DGN		DRAWN -	REVISED -
PLOT SCALE = 50.0000' / IN.		CHECKED -	REVISED -
PLOT DATE = Apr 09, 2009 - 11:45:04 AM		DATE -	REVISED -

**STATE OF ILLINOIS
DEPARTMENT OF TRANSPORTATION**

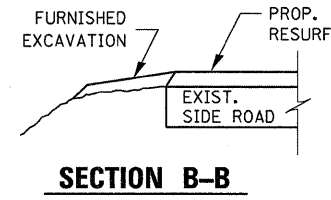
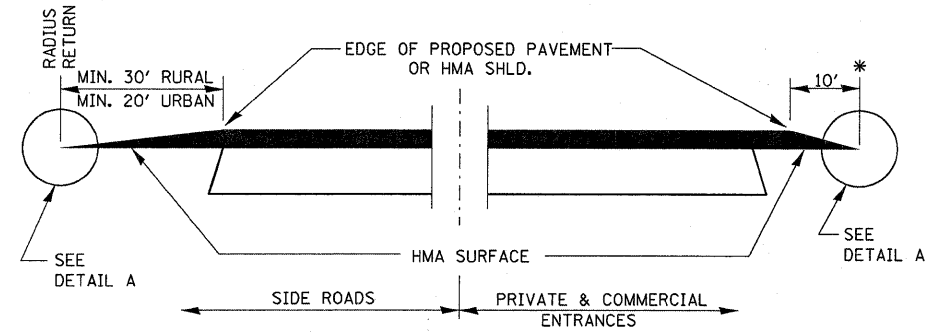
PLAN VIEW

SCALE: 1=50 SHEET NO. OF SHEETS STA. 103+00 TO STA. 126+75

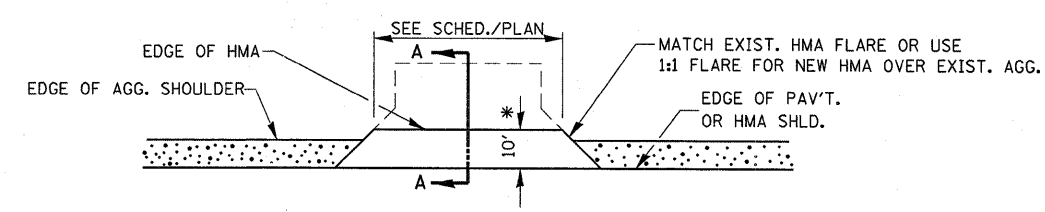
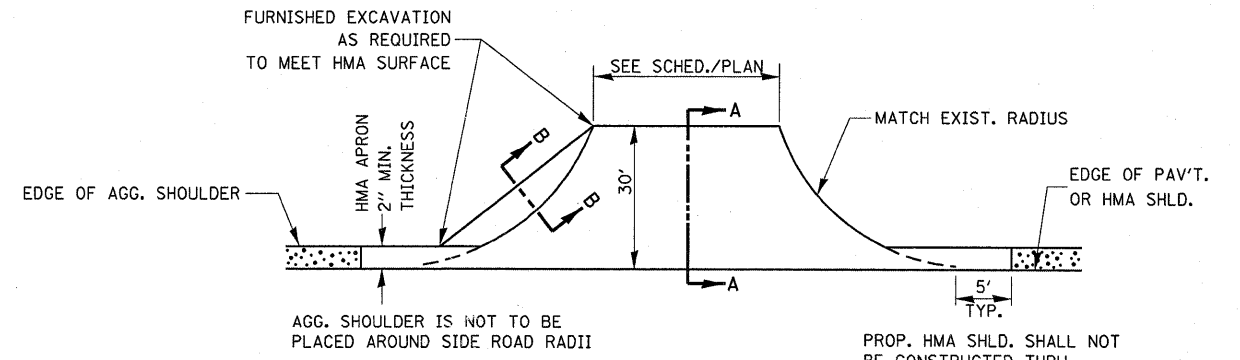
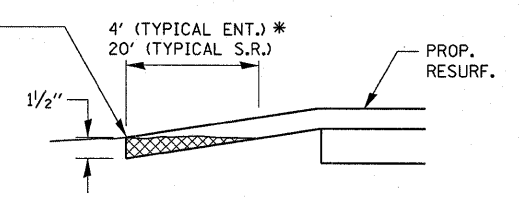
F.A.P. RTE.	SECTION	COUNTY	TOTAL SHEETS	SHEET NO.
587	(20)RS-5	LASALLE	13	11
CONTRACT NO. 66974				
ILLINOIS FED. AID PROJECT				



PAVEMENT MARKING

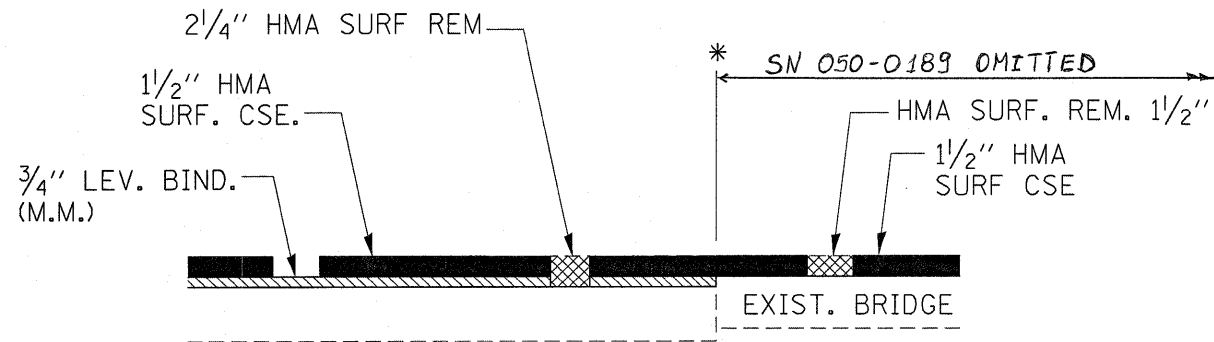


THE COST OF REMOVAL AT EXISTING HMA OR P.C.C. LOCATIONS SHALL BE PAID FOR PER SQ. YD. BY THE APPROPRIATE PAY ITEM. REMOVAL AT THE EXISTING AGG. LOCATIONS SHALL BE INCIDENTAL TO THE HMA. A-3 LOCATIONS SHALL BE FEATHER TAPERED.



* PROPOSED HMA RESURFACING AT PUBLIC EDUCATIONAL FACILITY ENTRANCES SHALL BE EXTENDED TO THE RIGHT-OF-WAY LIMITS.

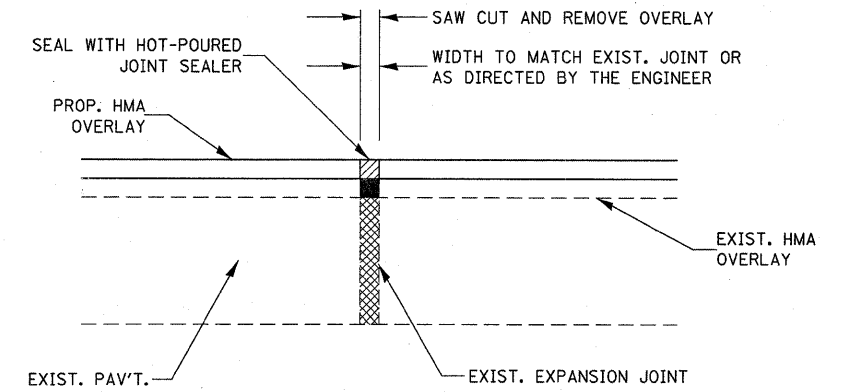
FILE NAME =	USER NAME = duncanbd	DESIGNED -	REVISED -	STATE OF ILLINOIS DEPARTMENT OF TRANSPORTATION	DETAILS			F.A.P. RTE.	SECTION	COUNTY	TOTAL SHEETS	SHEET NO.
c:\pwork\PWIDOT\DUNCANBD\0135021\036974-shd-details.DGN		DRAWN -	REVISED -		587	(20)RS-5	LASALLE	13	12			
		PLOT SCALE = 50.0000' / IN.	CHECKED -		REVISED -	CONTRACT NO. 66974						
		PLOT DATE = Apr 09, 2009 - 11:44:25 AM	DATE -		REVISED -	ILLINOIS FED. AID PROJECT						
					SCALE:	SHEET NO.	OF	SHEETS	STA.	TO STA.		



TAPER AT SN 050-0189

*STA. 54+77.5
STA. 55+46.5

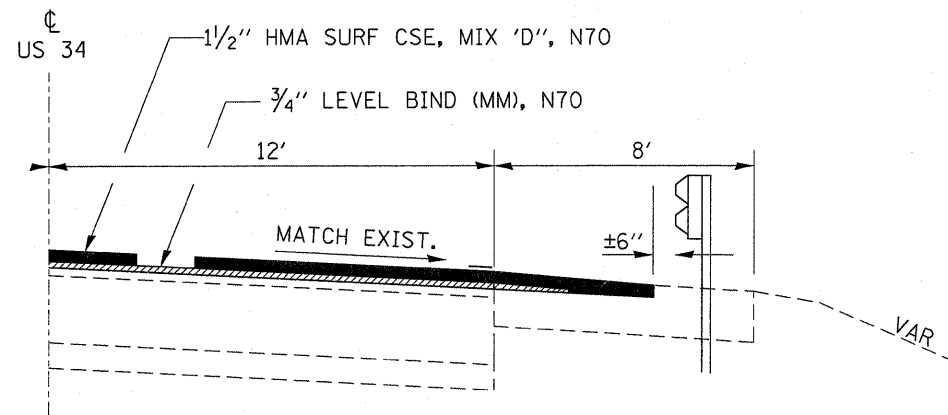
EXISTING 1 1/2" HMA ON DECK



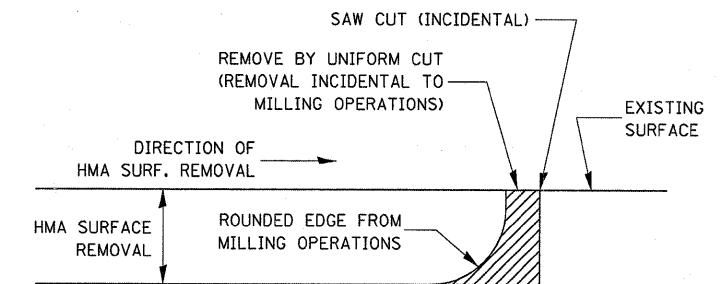
EXPANSION JOINT REHABILITATION DETAIL

GENERAL NOTES:

1. THE NEW HMA OVERLAY SHALL BE SAWED, REMOVED AND THE JOINT AREA CLEANED. PRIOR TO PLACING THE HOT-POURED JOINT SEALER, THE JOINT SHALL BE BLOWN OUT WITH COMPRESSED AIR.
2. THIS WORK WILL BE PAID FOR AT THE CONTRACT UNIT PRICE PER FOOT FOR EXPANSION JOINT REHABILITATION.



MILLING AT GUARDRAIL



NOTE:

WHEN MILLING OPERATIONS PRODUCE A ROUNDED EDGE, THEN A SAW CUT SHALL BE USED TO MANUFACTURE A PERPENDICULAR EDGE AS SHOWN IN THE DETAIL. THE ENGINEER SHALL BE THE SOLE JUDGE CONCERNING THE USE OF THIS DETAIL

HMA DETAIL AT BUTT JOINTS

FILE NAME =	USER NAME = duncanbd	DESIGNED -	REVISED -	STATE OF ILLINOIS DEPARTMENT OF TRANSPORTATION	DETAILS			F.A.P. RTE.	SECTION	COUNTY	TOTAL SHEETS	SHEET NO.
cd\pw_work\PWIDOT\DUNCANBD\0135021\0365974-shr-details.DGN		DRAWN -	REVISED -		587	(20)RS-5	LASALLE	13	13			
PLOT SCALE = 50.0000' / IN.		CHECKED -	REVISED -		CONTRACT NO. 66974							
PLOT DATE = Apr 09, 2009 - 11:44:30 AM		DATE -	REVISED -		ILLINOIS FED. AID PROJECT							
				SCALE:	SHEET NO.	OF	SHEETS	STA.	TO STA.			