

F.A.U.RTE.	SECTION	COUNTY	TOTAL SHEETS	SHEET NO.
2594/2592	094-00091-01-RS	COOK	14	1
FED. ROAD DIST. NO.	ILLINOIS	CONTRACT NO. 63243		

**STATE OF ILLINOIS
DEPARTMENT OF TRANSPORTATION
DIVISION OF HIGHWAYS**

**PLANS FOR PROPOSED
FEDERAL AID HIGHWAY**

**F.A.U. 2594 (EAST FRONTAGE RD) AND
F.A.U. 2592 (WEST FRONTAGE RD) IL ROUTE 53
SECTION 09-00091-01-RS
PROJECT NO. ARA-9003(420)**

**F.A.P. 0339 (IL RTE 62 (ALGONQUIN RD)) TO F.A.U. 3517 (KIRCHOFF RD)
ROADWAY PATCHING AND OVERLAY
COOK COUNTY
JOB NO. C-91-809-09**

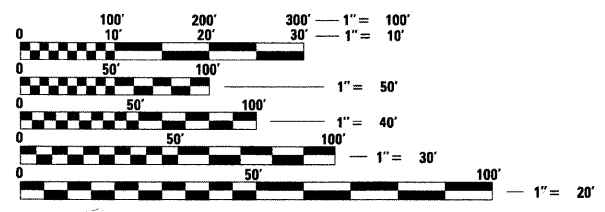
SHEET NO.	DESCRIPTION
1	COVER SHEET
2	GENERAL NOTES
3	SUMMARY OF QUANTITIES
4-5	TYPICAL SECTIONS
6	SCHEDULES OF QUANTITIES
7	DETOUR NOTES AND PLAN
8-9	OVERALL PLAN
10	CONSTRUCTION DETAILS
11	BUTT JOINT AND HMA TAPER DETAILS (DIST 1 STD BD-32)
12	TYPICAL APPLICATIONS RAISED REFLECTIVE PAVEMENT MARKERS (SNOW-PLOW RESISTANT) (DIST 1 STD TC-11)
13	DISTRICT ONE TYPICAL PAVEMENT MARKINGS (DIST 1 STD TC-13)
14	TRAFFIC CONTROL AND PROTECTION FOR SIDE ROADS, INTERSECTIONS & DRIVEWAYS (DIST 1 STD TC-10) ARTERIAL ROAD INFORMATION SIGN (DIST 1 STD TC-22)

LIST OF STATE STANDARDS LOCATED ON SHEET NO. 2

THE CONTRACTOR SHALL BE SOLELY RESPONSIBLE FOR JOB SITE SAFETY AS WELL AS SUPERVISION/DIRECTION AND MEANS/METHODS OF CONSTRUCTION.

PROJECT LOCATED IN THE CITY OF ROLLING MEADOWS

**J.U.L.I.E.
JOINT UTILITY LOCATION INFORMATION FOR EXCAVATION
1-800-892-0123 OR 811
T41N, R11E, SECTION 6, 7
T41N, R10E, SECTION 1, 12
T42N, R10E, SECTION 26, 35**



FULL SIZE PLANS HAVE BEEN PREPARED USING STANDARD ENGINEERING SCALES. REDUCED SIZED PLANS WILL NOT CONFORM TO STANDARD SCALES. IN MAKING MEASUREMENTS ON REDUCED PLANS, THE ABOVE SCALES MAY BE USED.

**DESIGN DESIGNATION
MAJOR COLLECTORS**

TRAFFIC DATA:

WEST FRONTAGE
ADT = 3,250
POSTED/DESIGN SPEED = VARIES 15 to 35 MPH

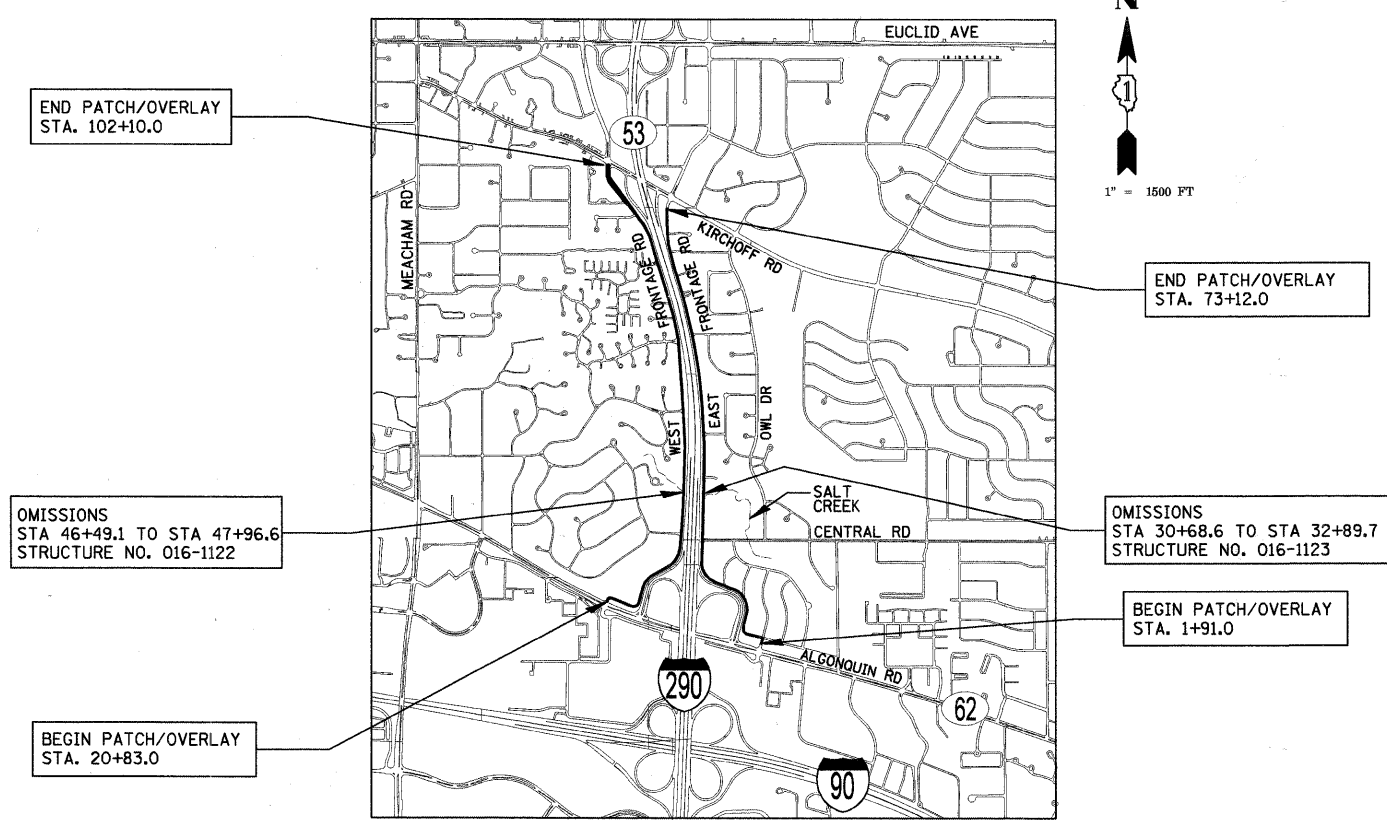
EAST FRONTAGE
ADT = 6,200
POSTED/DESIGN SPEED = VARIES 15 to 35 MPH

CHRISTOPHER B. BURKE ENGINEERING, LTD.
9575 W. Higgins Road, Suite 600
Rosemont, Illinois 60018
(847) 823-0500

PROFESSIONAL DESIGN FIRM NO.: 184-001175
EXPIRATION DATE: APRIL 30, 2011

CONTRACT NO. 63243

ASSOCIATE FIELD ENGINEER: KEVIN STALLWORTH, PE
201 W. CENTER COURT
SCHAUMBURG, ILLINOIS 60196-1096
(847) 705-4169



LOCATION MAP

GROSS LENGTH OF PROJECT = 16,180 LINEAL FEET (3.06 MILES)
NET LENGTH OF PROJECT = 15,792 LINEAL FEET (3.00 MILES)

**STATE OF ILLINOIS
DEPARTMENT OF TRANSPORTATION
DIVISION OF HIGHWAYS**

APPROVED June 29 20 09
Paul Vaj
CITY OF ROLLING MEADOWS, Director of Public Works
TITLE

PASSED July 16 20 09
Christopher Heber
DISTRICT 1 ENGINEER OF LOCAL ROADS AND STREETS

RELEASING FOR BID BASED ON LIMITED REVIEW July 16 20 09
Dwain M. O'Keefe, Jr.
DEPUTY DIRECTOR OF HIGHWAYS, REGION 1 ENGINEER

BRYAN L. LUKE
ILLINOIS REGISTRATION No. 062-054957 ENGINEER
EXPIRATION DATE: 11/30/2009

**PRINTED BY THE AUTHORITY
OF THE STATE OF ILLINOIS**