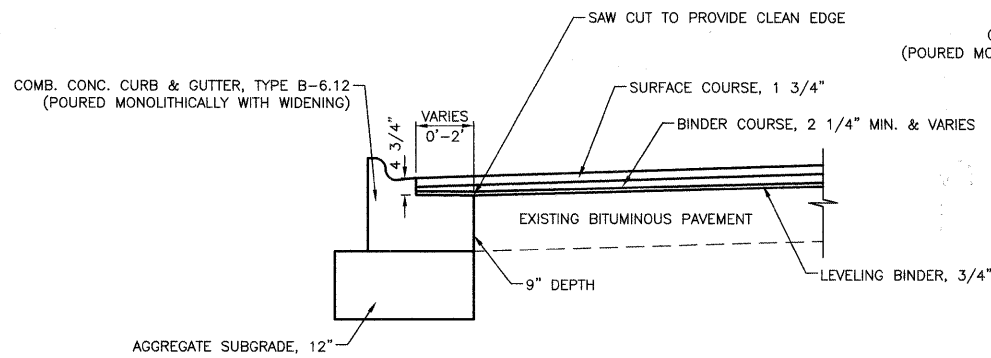
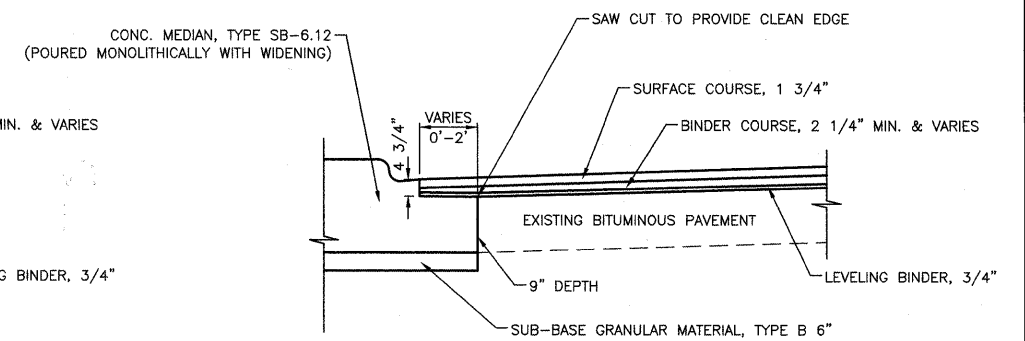


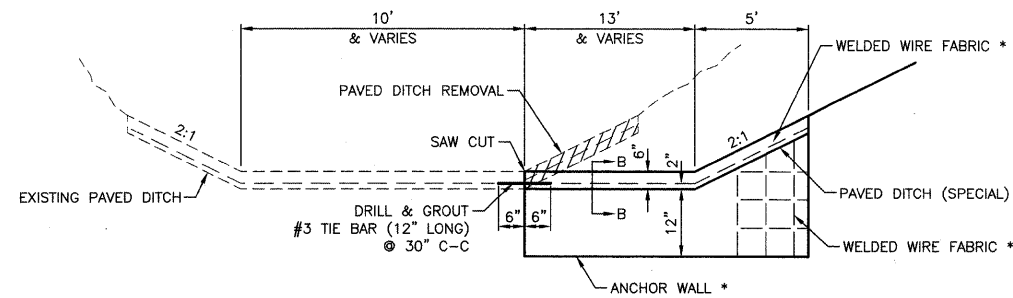
COMBINATION CONCRETE CURB AND GUTTER, TYPE B-6.24 (MODIFIED)
AT LOCATIONS WHERE WIDENING IS 2' OR LESS



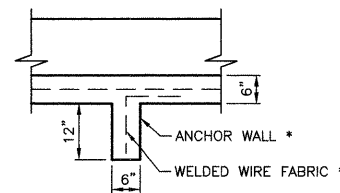
COMBINATION CONCRETE CURB AND GUTTER, TYPE B-6.12 (MODIFIED)
AT LOCATIONS WHERE WIDENING IS 2' OR LESS



CONCRETE MEDIAN, TYPE SB-6.12
AT LOCATIONS WHERE WIDENING IS 2' OR LESS

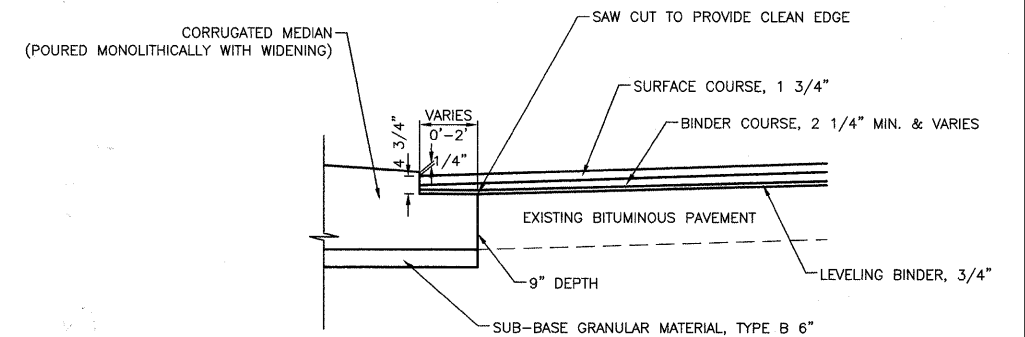


SECTION A-A
DETAIL OF PAVED DITCH (SPECIAL)

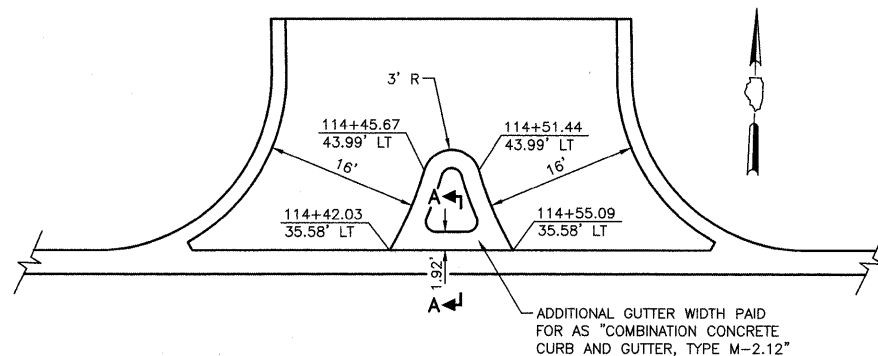


SECTION B-B
DETAIL OF ANCHOR WALL

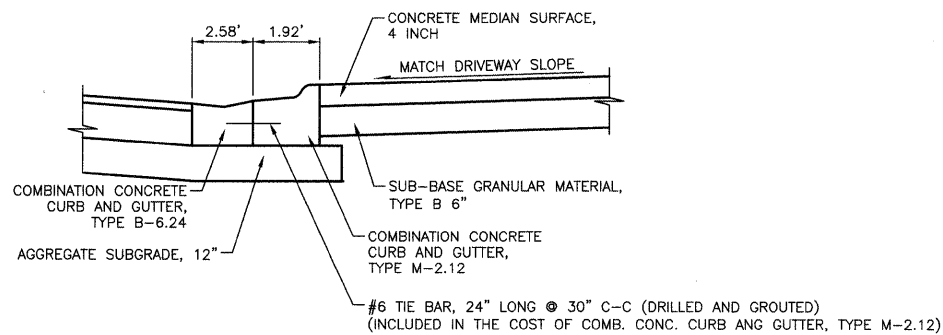
ANCHOR WALL SPACING SHALL MATCH LOCATIONS OF EXISTING ANCHOR WALL OR BE AT 50' MAXIMUM SPACING.



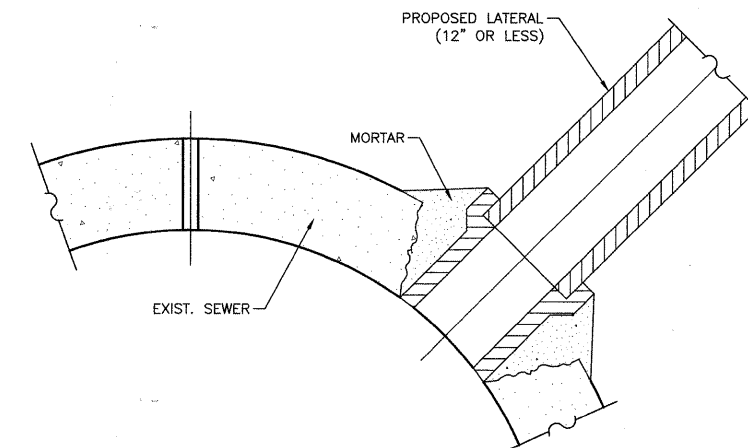
CORRUGATED MEDIAN
AT LOCATIONS WHERE WIDENING IS 2' OR LESS



CONCRETE MEDIAN DETAIL
HENNEPIN DRIVE
STA. 114+49



SECTION A-A
NOT TO SCALE



LATERAL CONNECTION DETAIL

PROPOSED LATERAL CONNECTION TO EXISTING SEWER OF 30" OR LARGER
PROPOSED HOLE SHALL ONLY BE MADE WITH A CORE DRILL UNLESS APPROVED BY THE ENGINEER
THE COST OF MAKING THIS CONNECTION SHALL BE INCLUDED IN THE COST OF THE PROPOSED STORM SEWER BEING CONSTRUCTED.

FILE NAME =	USER NAME =	DESIGNED <i>BLG/KRK</i>	REVISED -	STATE OF ILLINOIS DEPARTMENT OF TRANSPORTATION	DETAILS ESSINGTON ROAD AT HENNEPIN DRIVE	F.A.U. RTE. =	SECTION	COUNTY	TOTAL SHEETS	SHEET NO.	
		DRAWN <i>BLG/KRK</i>	REVISED -			0326	06-00130-00-CH	WILL	116	85	
		CHECKED <i>DJK</i>	REVISED -			CONTRACT NO. 63185					
		DATE <i>5-29-09</i>	REVISED -			FED. ROAD DIST. NO. 7 ILLINOIS FED. AID PROJECT M-8003(654)					
					SCALE: NOT TO SCALE	SHEET NO. 1 OF 1 SHEETS					