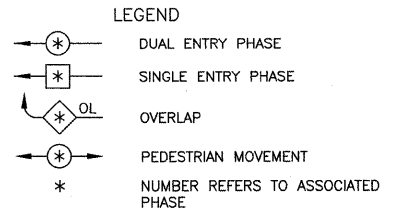
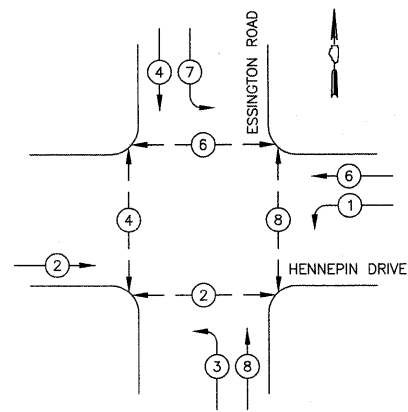
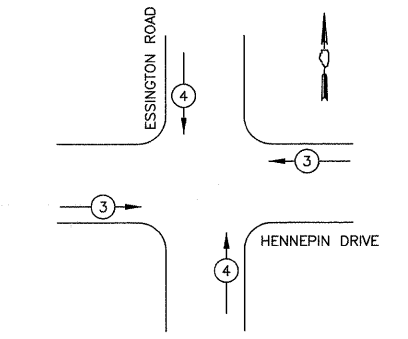


**CONTROLLER SEQUENCE  
EXISTING CONDITION**



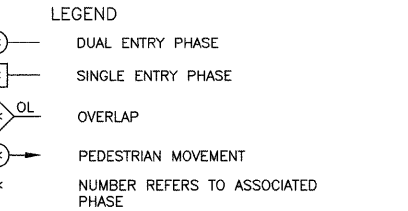
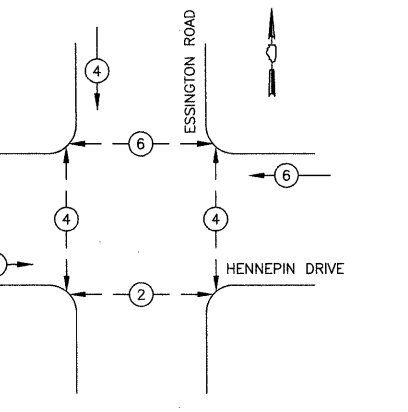
**PHASE DESIGNATION DIAGRAM**

**EMERGENCY VEHICLE PREEMPTION SEQUENCE  
EXISTING CONDITION**



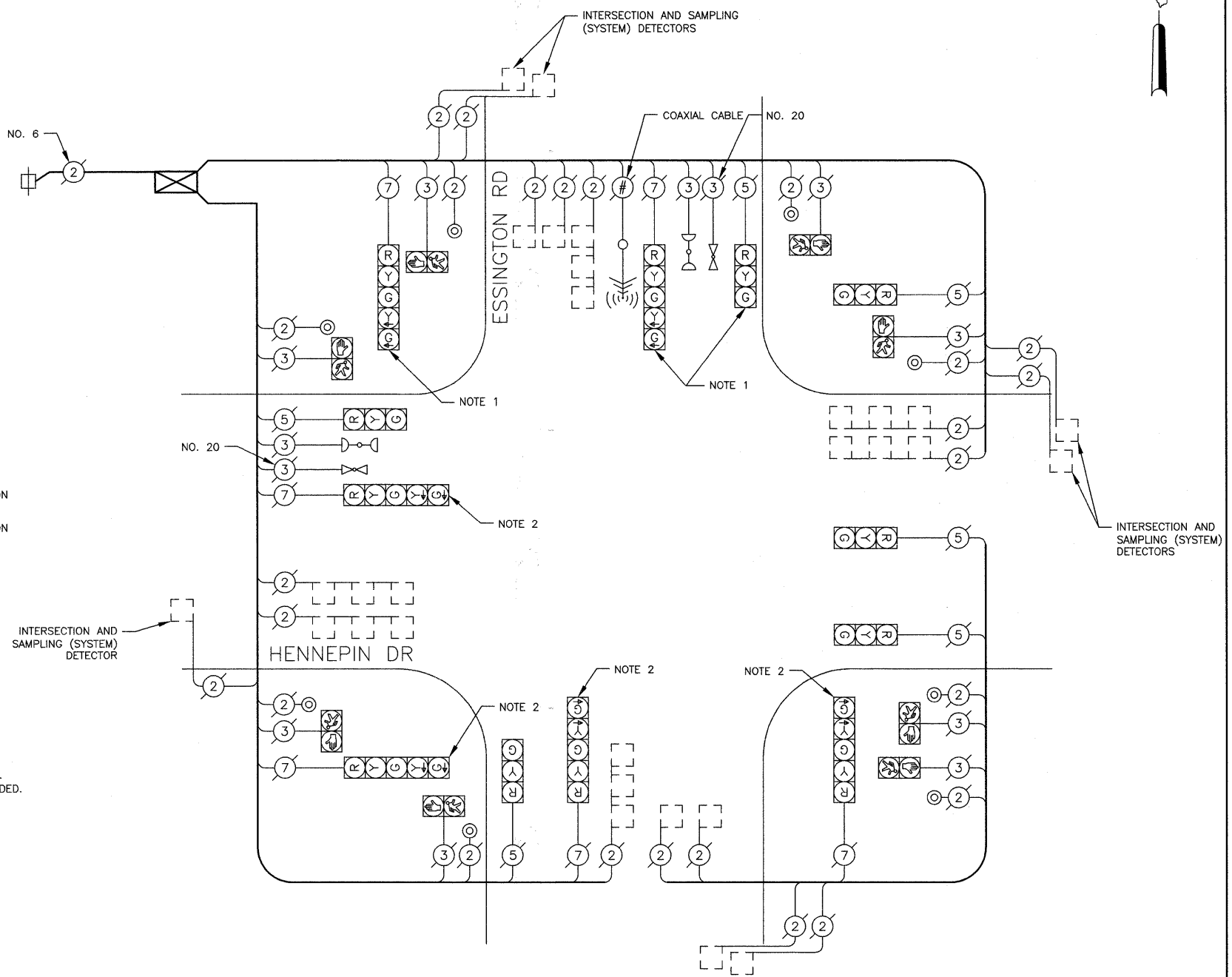
PROPOSED EMERGENCY VEHICLE PREEMPTORS		
EMERGENCY VEHICLE PREEMPTOR	3	4
MOVEMENT	→	↑

**CONTROLLER SEQUENCE  
ESSINGTON ROAD CLOSURE**



**CABLE PLAN LEGEND**

EXISTING	PROPOSED	DESCRIPTION
G	G	8" (200mm) TRAFFIC SIGNAL SECTION
R	R	12" (300mm) TRAFFIC SIGNAL SECTION
W	W	12" (300mm) PEDESTRIAN SIGNAL SECTION
OC	OC	12" (300mm) PEDESTRIAN SIGNAL SECTION WITH COUNTDOWN TIMER
⊠	⊠	CONTROLLER CABINET
⊠	⊠	SERVICE INSTALLATION
T	T	TELEPHONE CONNECTION
⊠	⊠	VEHICLE DETECTOR, INDUCTION LOOP
⊠	⊠	MAGNETIC DETECTOR
⊠	⊠	EMERGENCY VEHICLE LIGHT DETECTOR
⊠	⊠	CONFIRMATION BEACON
⊠	⊠	PUSHBUTTON DETECTOR
⊠	⊠	DENOTES NUMBER OF CONDUCTORS ALL CABLE NO. 14 EXCEPT AS INDICATED. ALL LOOP DETECTOR CABLE TO BE SHIELDED.
⊠	⊠	GROUND CABLE IN CONDUIT, NO. 6 SOLID COPPER (GREEN)
⊠	⊠	FIBER OPTIC CABLE IN CONDUIT NO. 82.5/125 2-MM12F SM12F
R	R	SIGNAL FACE WITH BACKPLATE "P" INDICATES PROGRAMMED HEAD.
R	R	RAILROAD CONTROL CABINET
E	E	ILLUMINATED SIGN, "NO LEFT TURN"
E	E	ILLUMINATED SIGN, "NO RIGHT TURN"
H/C	C	GROUND ROD AT HANDHOLE (H), DOUBLE HANDHOLE (H), OR CONTROLLER (C)
MA/P	MA/P	GROUND ROD AT POST (P) OR MAST ARM POLE (MA)
S	S	GROUND ROD AT ELECTRIC SERVICE INSTALLATION
UPS	UPS	UNINTERRUPTIBLE POWER SUPPLY
Street Name	Street Name	L.E.D. INTERNALLY ILLUMINATED STREET NAME SIGN
⊠	⊠	RADIO ANTENNA



**CABLE PLAN**  
NOT TO SCALE

**NOTES**

- THESE SIGNAL HEADS SHALL BE BAGGED AND DISCONNECTED DURING ESSINGTON ROAD CLOSURE PRIOR TO MOT STAGE 1.
  - THE LEFT TURN ARROW SECTIONS OF THESE SIGNAL HEADS SHALL BE BAGGED AND THE ASSOCIATED PHASES DISCONNECTED DURING ESSINGTON ROAD CLOSURE PRIOR TO MOT STAGE 1.
- NOTE:  
THE TRAFFIC SIGNAL CONTROL EQUIPMENT FOR THIS INTERSECTION SHALL BE "ECONOLITE" TO MATCH THE EXISTING ADJACENT SYSTEM.

I.D.O.T. TRAFFIC SIGNAL INSTALLATION ELECTRICAL SERVICE REQUIREMENTS					TOTAL WATTAGE
TYPE	NO. LAMPS	WATTAGE INCAND.	LED	% OPERATION	
SIGNAL (RED)	12		17	0.50	102
(YELLOW)	12		25	0.25	75
(GREEN)	12		15	0.25	45
ARROW	12		12	0.10	15
PED. SIGNAL	8		25	1.00	200
CONTROLLER	1		100	1.00	100
TOTAL =					537

ENERGY COSTS TO: ILLINOIS DEPARTMENT OF TRANSPORTATION  
201 WEST CENTER COURT  
SCHAUMBURG, IL 60196-1096  
CONTACT: DOLORES KREMNITZER  
PHONE: (815) 724-5241  
COMPANY: COM ED

ENERGY SUPPLY: