

DATE	
BY	
REVISIONS	
NO.	
DESCRIPTION	
DATE	
BY	
REVISIONS	
NO.	
DESCRIPTION	
DATE	
BY	
REVISIONS	
NO.	
DESCRIPTION	
DATE	
BY	
REVISIONS	
NO.	
DESCRIPTION	

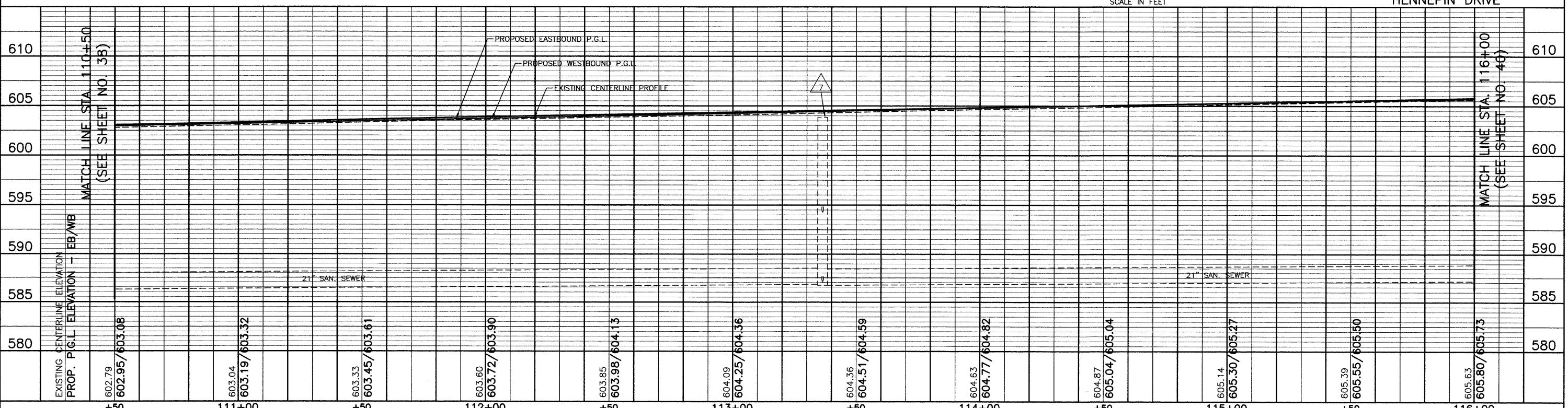
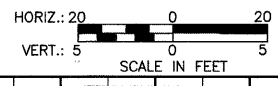
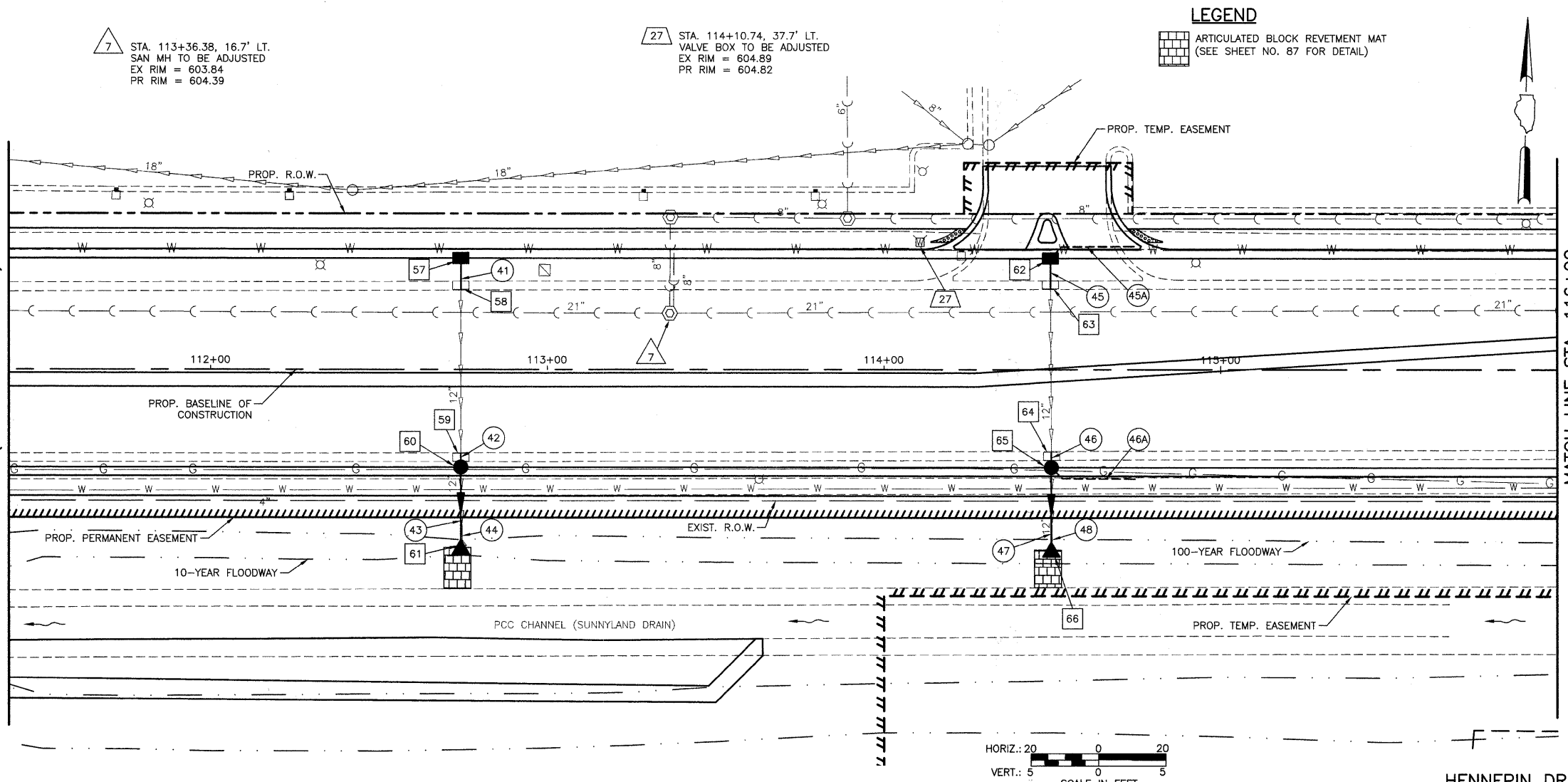
DATE	
BY	
REVISIONS	
NO.	
DESCRIPTION	
DATE	
BY	
REVISIONS	
NO.	
DESCRIPTION	
DATE	
BY	
REVISIONS	
NO.	
DESCRIPTION	

- 57 STA. 112+74.34, 33.0' LT. INLET T-A, T-24 F&G RIM = 603.78 INV = 600.03 (12" S)
- 58 STA. 112+74.34, 25.0' LT. REMOVING INLET TO MAINTAIN FLOW INV = 599.9 (EX 12" S)
- 59 STA. 112+74.29, 26.1' RT. REMOVING INLET TO MAINTAIN FLOW INV = 599.2 (EX 12" N)
- 60 STA. 112+74.29, 29.0' RT. CB T-A, 4' DIA., T-24 F&G RIM = 603.63 INV = 599.14 (12" N) INV = 599.07 (12" S)
- 61 STA. 112+74.29, 54.9' RT. PRC FLARED END SECTION, 12" INV = 598.53
- 62 STA. 114+49.48, 33.0' LT. INLET T-A, T-24 F&G RIM = 604.58 INV = 601.18 (12" S)
- 63 STA. 114+49.48, 25.3' LT. REMOVING INLET TO MAINTAIN FLOW INV = 601.00 (EX 12" S)
- 64 STA. 114+49.72, 25.7' RT. REMOVING INLET TO MAINTAIN FLOW INV = 600.00 (EX 12" N)
- 65 STA. 114+49.72, 29.0' RT. CB T-A, 4' DIA., T-24 F&G RIM = 604.55 INV = 599.90 (12" N) INV = 599.77 (12" S)
- 66 STA. 114+49.72, 55.5' RT. PRC FLARED END SECTION, 12" INV = 599.01

- 41 9' - 12" SS CL A, T-1 @ 1.4% TBF = 1.4 CU. YD.
- 42 4' - 12" SS CL A, T-2 @ 1.4% TBF = 0.9 CU. YD.
- 43 16' - 12" SS WMR T-2 @ 2.5% TBF = 2.3 CU. YD.
- 44 26' - 12" SS REMOVAL
- 45 9' - 12" SS CL A, T-1 @ 2.0% TBF = 1.2 CU. YD.
- 45A 25' - PIPE UNDERDRAIN, 4"
- 46 5' - 12" SS CL A, T-2 @ 2.0% TBF = 1.2 CU. YD.
- 46A 25' - PIPE UNDERDRAIN, 4"
- 47 16' - 12" SS WMR T-2 @ 3.5% TBF = 2.5 CU. YD.
- 48 25' - 12" SS REMOVAL

MATCH LINE STA. 111+40
(SEE SHEET NO. 35)

MATCH LINE STA. 116+00
(SEE SHEET NO. 40)



FILE NAME =	USER NAME =	DESIGNED <i>BLG/KRK</i>	REVISED -	STATE OF ILLINOIS DEPARTMENT OF TRANSPORTATION	DRAINAGE & UTILITIES HENNEPIN DRIVE	F.A.U. RTE. =	SECTION	COUNTY	TOTAL SHEETS	SHEET NO.	
		DRAWN <i>BLG/KRK</i>	REVISED -			0326	06-00130-00-CH	WILL	116	39	
PLOT SCALE =	CHECKED <i>DJK</i>	REVISED -				CONTRACT NO. 63185					
PLOT DATE =	DATE <i>5-29-09</i>	REVISED -				FED. ROAD DIST. NO. 7 ILLINOIS FED. AID PROJECT M-8003(654)					

SCALE: 1"=20' SHEET NO. 6 OF 8 SHEETS STA. 110+50 TO STA. 116+00