

HENNEPIN DRIVE  
MATCH LINE STA. 109+00  
(SEE SHEET NO. 38)

END IMPROVEMENT  
STA. 146+02.41

MATCH LINE STA. 141+50  
(SEE SHEET NO. 34)

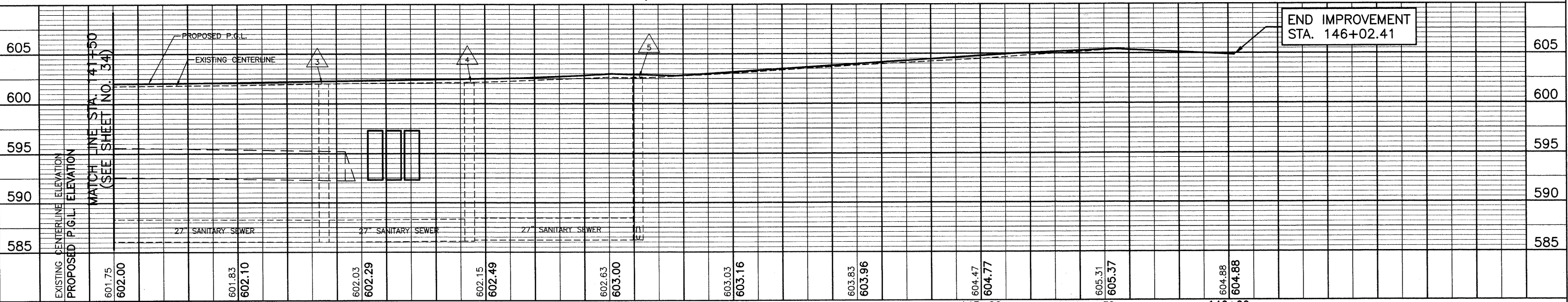
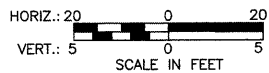
HENNEPIN DRIVE - MATCH LINE STA. 111+40  
(SEE SHEET NO. 39)

ESSINGTON ROAD

END IMPROVEMENT  
STA. 146+02.41

DATE	
BY	
REVISIONS	
NO.	
PLAN	
NO.	
NO. OF SHEETS	
NO. OF SHEETS CHECKED	
NO. OF SHEETS NOT CHECKED	
NO. OF SHEETS NOT CHECKED	

DATE	
BY	
REVISIONS	
NO.	
PROFILE	
NO.	
NO. OF SHEETS	
NO. OF SHEETS CHECKED	
NO. OF SHEETS NOT CHECKED	
NO. OF SHEETS NOT CHECKED	



FILE NAME =	USER NAME =	DESIGNED BLG/KRK	REVISED -	<b>STATE OF ILLINOIS DEPARTMENT OF TRANSPORTATION</b>	<b>DRAINAGE &amp; UTILITIES ESSINGTON ROAD</b>	F.A.U. RTE.	SECTION	COUNTY	TOTAL SHEETS	SHEET NO.			
PLOT SCALE =	CHECKED DJK	REVISED -	0326			06-00130-00-CH	WILL	116	35				
PLOT DATE =	DATE 5-29-09	REVISED -	SCALE: 1"=20'			SHEET NO. 2 OF 8 SHEETS		STA. 141+50 TO STA. 146+02.41		FED. ROAD DIST. NO. 7 ILLINOIS	FED. AID PROJECT M-8003(854)		
												CONTRACT NO. 63185	