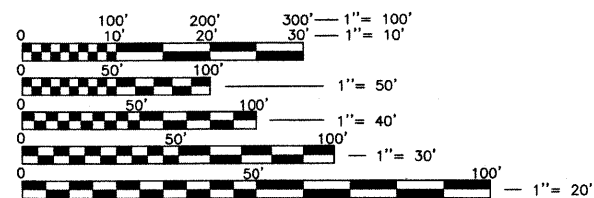
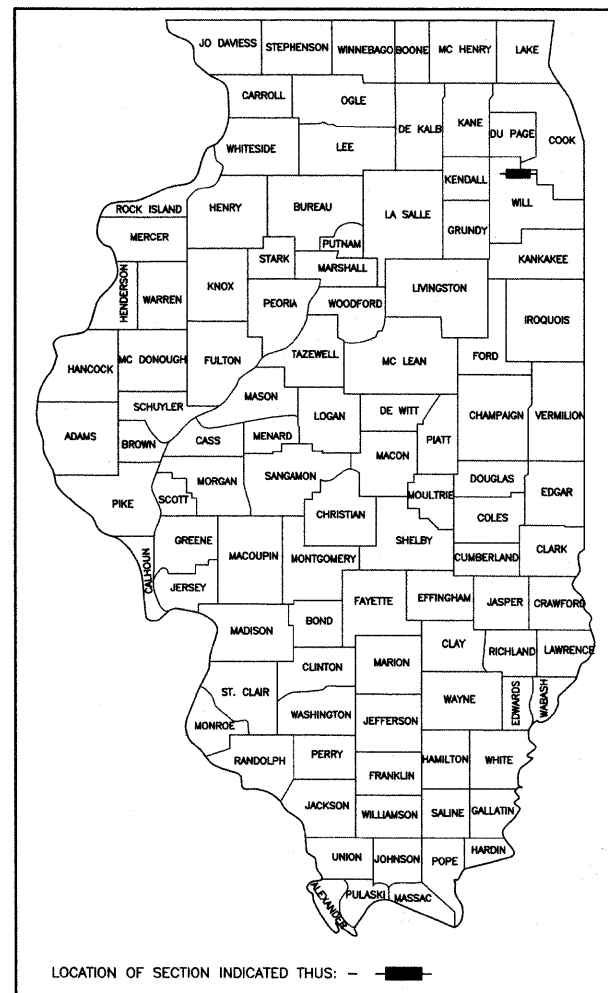


F.A.U. RTE.	SECTION	COUNTY	TOTAL SHEETS	SHEET NO.
0326	06-00130-00-CH	WILL	116	1
FED. ROAD DIST. NO. 7 ILLINOIS CONTRACT NO. 63185				

INDEX OF SHEETS

SHEET NO.	DESCRIPTION
1	COVER SHEET
2-3	GENERAL NOTES AND STATE STANDARDS
4-11	SUMMARY OF QUANTITIES
12-14	TYPICAL SECTIONS
15	SCHEDULE OF QUANTITIES
16	ALIGNMENT AND BENCHMARKS
17-22	PLAN AND PROFILE
23-25	MAINTENANCE OF TRAFFIC GENERAL NOTES AND TYPICAL SECTIONS
26-29	MAINTENANCE OF TRAFFIC
30	DETOUR NOTES
31	DETOUR PLAN SHEET
32-33	EROSION CONTROL AND LANDSCAPING
34-41	DRAINAGE AND UTILITIES
42-52	PLAT OF HIGHWAYS
53	INTERSECTION GRADING DETAILS
54-55	PAVEMENT MARKING
56-57	SIGNING
58	EXISTING CABLE PLAN
59	TEMPORARY TRAFFIC SIGNAL PLAN
60	TEMPORARY CABLE PLAN
61-63	TRAFFIC SIGNAL INSTALLATION PLAN
64	CABLE PLAN
65-66	SEQUENCE OF OPERATIONS / SCHEDULE OF QUANTITIES
67	INTERCONNECT SCHEMATIC
68	MAST ARM MOUNTED STREET NAME SIGNS
69-72	TRAFFIC SIGNAL DETAILS
73-74	TEMPORARY STREET LIGHTING
75-76	TEMPORARY STREET LIGHTING DETAILS
77-88	CONSTRUCTION DETAILS
89-92	CULVERT PLANS
93-94	WATER METER VAULT DETAILS
95	PAVED DITCH PLAN
96-116	CROSS SECTIONS

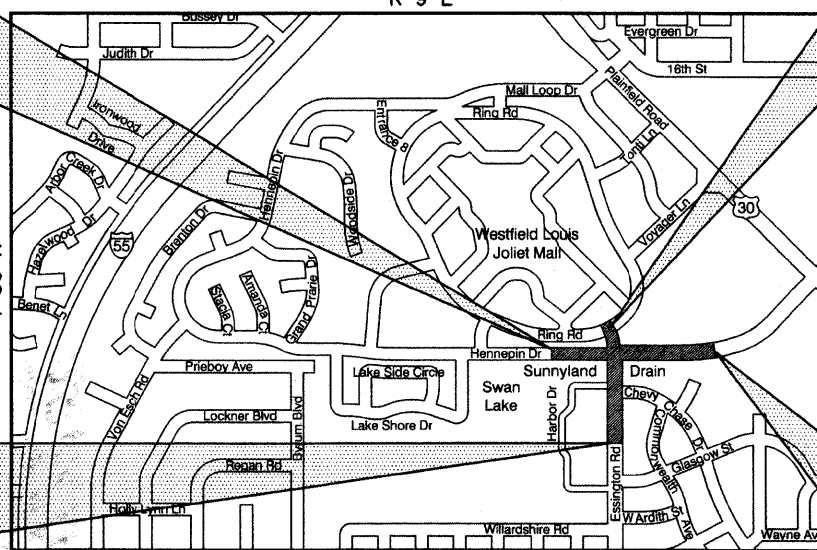
STATE OF ILLINOIS
DEPARTMENT OF TRANSPORTATION
DIVISION OF HIGHWAYS
PLANS FOR PROPOSED FEDERAL AID HIGHWAY
F.A.U. ROUTE 0326 (ESSINGTON ROAD)
AT HENNEPIN DRIVE
SECTION 06-00130-00-CH
PROJECT NO. M-8003(654)
INTERSECTION IMPROVEMENT
AND TRAFFIC SIGNAL MODERNIZATION
CITY OF JOLIET
WILL COUNTY
C-91-398-06



FULL SIZE PLANS HAVE BEEN PREPARED USING STANDARD ENGINEERING SCALES. REDUCED SIZED PLANS WILL NOT CONFORM TO STANDARD SCALES. IN MAKING MEASUREMENTS ON REDUCED PLANS, THE ABOVE SCALES MAY BE USED.

PROJECT BEGINS
STA. 100+80.83
HENNEPIN DRIVE

PROJECT BEGINS
STA. 136+50
ESSINGTON ROAD



PROJECT ENDS
STA. 146+02.41
ESSINGTON ROAD

PROJECT ENDS
STA. 121+29.65
HENNEPIN DRIVE

LOCATION MAP
NOT TO SCALE

STATE OF ILLINOIS
DEPARTMENT OF TRANSPORTATION
DIVISION OF HIGHWAYS

APPROVED MAY 22 2009
Jenna R. Tompa
CITY OF JOLIET, DIRECTOR OF PUBLIC WORKS

PASSED JULY 16 2009
Christopher Holt
DISTRICT ONE ENGINEER OF LOCAL ROADS & STREETS

RELEASING FOR BID
BASED ON LIMITED
REVIEW JULY 16, 2009
Diane M. O'Keefe
DEPUTY DIRECTOR OF HIGHWAYS, REGION ONE ENGINEER

J.U.L.I.E.
JOINT UTILITY LOCATION INFORMATION FOR EXCAVATION
1-800-892-0123 OR 811

ASSOCIATE FIELD ENGINEER:
MELCHOR MANGOBA 847-705-4408 SCHAUMBURG, IL
CONSULTANT ENGINEER:
DAVID KREEGER, P.E. CIVILTECH ENGINEERING, INC.

CONTRACT NO. 63185

PROJECT LENGTH:
ESSINGTON ROAD - 952.4 FT. (0.180 MILE) (NET & GROSS)
HENNEPIN DRIVE - 2,048.7 FT. (0.388 MILE) (NET & GROSS)

DESIGN DESIGNATIONS:
ESSINGTON ROAD - 27,000 (2030) • COLLECTOR TWS-4 • 1.135 (HMA OVERLAY-15)
HENNEPIN DRIVE - 15,000 (2030) • COLLECTOR TWS-4 • 0.567 (HMA OVERLAY-15)

POSTED AND DESIGN SPEEDS:
ESSINGTON ROAD - 30 MPH (POSTED) - 35 MPH (DESIGN)
HENNEPIN DRIVE - 35 MPH (POSTED) - 40 MPH (DESIGN)



David A. Kreeger 5-27-09 11-30-09
REGISTERED P.E., STATE OF ILLINOIS
(COVERS SHEETS NO. 1-88 AND 94-118) EXPIRES



Gregory J. Hatlestad 5/27/09 11/30/10
REGISTERED S.E., STATE OF ILLINOIS
(COVERS SHEETS NO. 89-93) EXPIRES

PLANS PREPARED BY:
CIVILTECH
450 E. Devon Ave, Suite 300 - Itasca, Illinois 60143
Tel: 630.773.3900 - Fax: 630.773.3975
www.civiltechinc.com