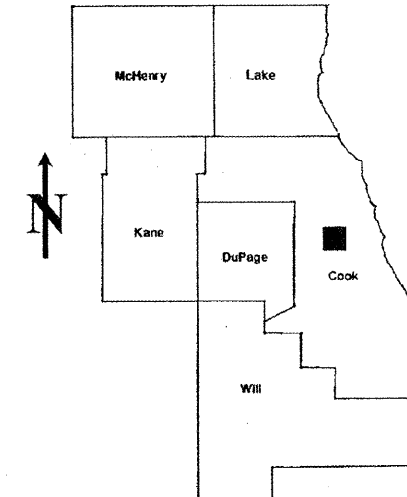


ROUTE	SECTION	COUNTY	TOTAL SHEETS	SHEET NUMBER
VARIOUS	2009-068 T	COOK	12	1

**STATE OF ILLINOIS**  
**DEPARTMENT OF TRANSPORTATION**  
**DIVISION OF HIGHWAYS**  
**DISTRICT ONE**  
**PROPOSED HIGHWAY PLANS**

**CONTRACT NO. 60H75**

D-91-784-09



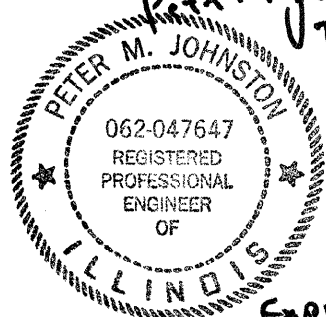
LOCATION OF IMPROVEMENT INDICATED THUS: 

FOR INDEX OF SHEETS, SEE SHEET NO. 2

VARIOUS ROUTES  
 SECTION: 2009-068 T  
 VARIOUS LOCATIONS IN CENTRAL COOK COUNTY  
 (HILLSIDE AND NORTHSIDE TEAM SECTIONS)  
 DRAINAGE REPAIRS  
 COOK COUNTY  
 C-91-784-09

DISTRICT ONE - DESIGN - PLAN PREPARATION ENGINEER:  
 KEN ENG / (847) 705-4247

**CONTRACT NO. 60H75**

*Peter M. Johnston*  
 7-10-09  
  
 Expires  
 11-30-09

**STATE OF ILLINOIS**  
**DEPARTMENT OF TRANSPORTATION**  
**DIVISION OF HIGHWAYS**  
 SUBMITTED: JULY 13, 2009  
*Diana M. O'Keefe*  
 DEPUTY DIRECTOR OF HIGHWAYS, REGION ENGINEER  
August 14, 2009  
*Charles J. Ingersoll*  
 ENGINEER OF DESIGN AND ENVIRONMENT  
August 14, 2009  
*Christine M. Reed*  
 DIRECTOR, DIVISION OF HIGHWAYS

**PRINTED BY THE AUTHORITY**  
**OF THE STATE OF ILLINOIS**

**J.U.L.I.E.: JOINT UTILITY LOCATION**  
**INFORMATION FOR EXCAVATION**  
**(312) 744-7000**

**INDEX OF SHEETS**

SHEET NO.	DESCRIPTION
1	COVER SHEET
2	GENERAL NOTES
3	SUMMARY OF QUANTITIES
4-6	SCHEDULES
7-10	LOCATION PLANS
11	CURB OR CURB AND GUTTER REMOVAL AND REPLACEMENT (BD24)
12	TRAFFIC CONTROL AND PROTECTION FOR SIDEROADS, INTERSECTION AND DRIVEWAYS (TC10)

**GENERAL NOTES**

- BEFORE STARTING ANY EXCAVATION, THE CONTRACTOR SHALL CALL "J.U.L.I.E." AT 800-892-0123 FOR FIELD LOCATIONS OF BURIED ELECTRIC, TELEPHONE AND GAS FACILITIES. (48 HOUR NOTIFICATION IS REQUIRED).
- THE CONTRACTOR SHALL COORDINATE CONSTRUCTION ACTIVITIES WITH UTILITY COMPANIES.
- THE CONTRACTOR WILL NOT BE ALLOWED TO SET UP A YARD OR FIELD OFFICE ON STATE PROPERTY WITHOUT WRITTEN PERMISSION FROM THE DEPARTMENT.
- WHEN ARTIFICIAL LIGHTING IS USED IN NIGHT OPERATIONS THE CONTRACTOR SHALL EXERCISE THE UTMOST PRECAUTIONS IN PREVENTING ADVERSE VISIBILITY TO THE MOTORING PUBLIC AND ADJOINING RESIDENTIAL AREAS.

**HIGHWAY STANDARDS**

STD. NO.	TITLE
424001-05	CURB RAMPS FOR SIDEWALKS
442201-03	CLASS C AND D PATCHES
604001-03	FRAMES AND LIDS, TYPE 1
701601-00	URBAN LANE CLOSURE, MULTILANE, 1W OR 2W WITH NON TRAVERSABLE MEDIAN
701602-04	URBAN LANE CLOSURE, MULTILANE, 2W WITH BIDIRECTIONAL LEFT TURN LANE
701606-00	URBAN LANE CLOSURE, MULTILANE, 2W WITH MOUNTABLE MEDIAN
701701-00	URBAN LANE CLOSURE, MULTILANE INTERSECTION
701901-01	TRAFFIC CONTROL DEVICES

HOT-MIX ASPHALT MIXTURE REQUIREMENTS		
MIXTURE TYPE	AC TYPE	AIR VOIDS
<b>PATCHING</b>		
HOT-MIX ASPHALT SURFACE COURSE, MIX "D", N70 (IL-9.5 mm); 2"	PG 64-22	4% @ 70 GYR
HMA BASE COURSE (HMA BINDER IL-19 MM); VARIES, MINIMUM 2 1/4"	PG 64-22*	4% @ 70 GYR

THE UNIT WEIGHT USED TO CALCULATE ALL HMA SURFACE MIXTURE QUANTITIES IS 112 LBS/SQ YD/IN.

\* WHEN RAP EXCEEDS 20%, THE NEW ASPHALT BINDER IN THE MIX SHALL BE PG 58-22

FILE NAME #FILE#  7-23-09	USER NAME - USER	DESIGNED -	REVISED -	<b>STATE OF ILLINOIS DEPARTMENT OF TRANSPORTATION</b>	<b>HILLSIDE AND NORTHSIDE TEAM SECTIONS DRAINAGE REPAIRS</b>	F.A.S. RTE.	SECTION	COUNTY	TOTAL SHEETS	SHEET NO.
	PLOT SCALE - 1/8"=1'-0"	DRAWN -	REVISED -			2009-068-1	COOK	12	2	
	PLOT DATE - 7/23/2009	CHECKED -	REVISED -			CONTRACT NO. 60475				
	DATE -	REVISED -	ILLINOIS FED. AID PROJECT							
					SCALE: 20	SHEET NO. OF SHEETS STA. TO STA.				

SUMMARY OF QUANTITIES

URBAN  
100% STATE

ITEM NUMBER	DESCRIPTION	UNIT	QUANTITY	Y007 DRAINAGE
42300500	PORTLAND CEMENT CONCRETE DRIVEWAY PAVEMENT, 9 INCH	SQ YD	14	14
42400200	PORTLAND CEMENT CONCRETE SIDEWALK 5 INCH	SQ FT	162	162
42400800	DETECTABLE WARNINGS	SQ FT	16	16
44000200	DRIVEWAY PAVEMENT REMOVAL	SQ YD	14	14
44000600	SIDEWALK REMOVAL	SQ FT	162	162
44001700	COMBINATION CONCRETE CURB AND GUTTER REMOVAL AND REPLACEMENT	FOOT	547	547
44200274	PAVEMENT PATCHING, TYPE I	SQ YD	172	172
44200276	PAVEMENT PATCHING, TYPE II	SQ YD	46	46
44200278	PAVEMENT PATCHING, TYPE III	SQ YD	15	15
550A0050	STORM SEWERS, CLASS A, TYPE 1 12"	FOOT	15	15
55039700	STORM SEWERS TO BE CLEANED	FOOT	24	24
60250200	CATCH BASINS TO BE ADJUSTED	EACH	37	37
60252800	CATCH BASINS TO BE RECONSTRUCTED	EACH	33	33
60257900	MANHOLES TO BE RECONSTRUCTED	EACH	8	8
60260100	INLETS TO BE ADJUSTED	EACH	6	6
60262700	INLETS TO BE RECONSTRUCTED	EACH	7	7
60406000	FRAMES AND LIDS, OPEN LID TYPE I,	EACH	27	27
60406100	FRAMES AND LIDS, CLOSED LID TYPE I,	EACH	4	4
Z0018500	DRAINAGE STRUCTURES TO BE CLEANED	EACH	49	49
67000400	ENGINEER'S FIELD OFFICE, TYPE A	CAL MO	6	6
67100100	MOBILIZATION	L SUM	1	1
70102625	TRAFFIC CONTROL AND PROTECTION, STANDARD 701606	L SUM	1	1
70102630	TRAFFIC CONTROL AND PROTECTION, STANDARD 701601	L SUM	1	1
70102632	TRAFFIC CONTROL AND PROTECTION, STANDARD 701602	L SUM	1	1
70102635	TRAFFIC CONTROL AND PROTECTION, STANDARD 701701	L SUM	1	1

FILE NAME :	USER NAME : USER	DESIGNED -	REVISED -	STATE OF ILLINOIS DEPARTMENT OF TRANSPORTATION	HILLSIDE AND NORTHSIDE TEAM SECTIONS DRAINAGE REPAIRS	F.A.R. RTE.	SECTION	COUNTY	TOTAL SHEETS	SHEE NO.	
FILE #		DRAWN -	REVISED -					2009-06B_I	COOK	12	3
	PLOT SCALE = 480.0000' / IN.	CHECKED -	REVISED -			SCALE: 20	SHEET NO. OF SHEETS	CONTRACT NO. 60415		ILLINOIS FED. AID PROJECT	
	PLOT DATE = 7/8/2009	DATE -	REVISED -			STA. TO STA.					

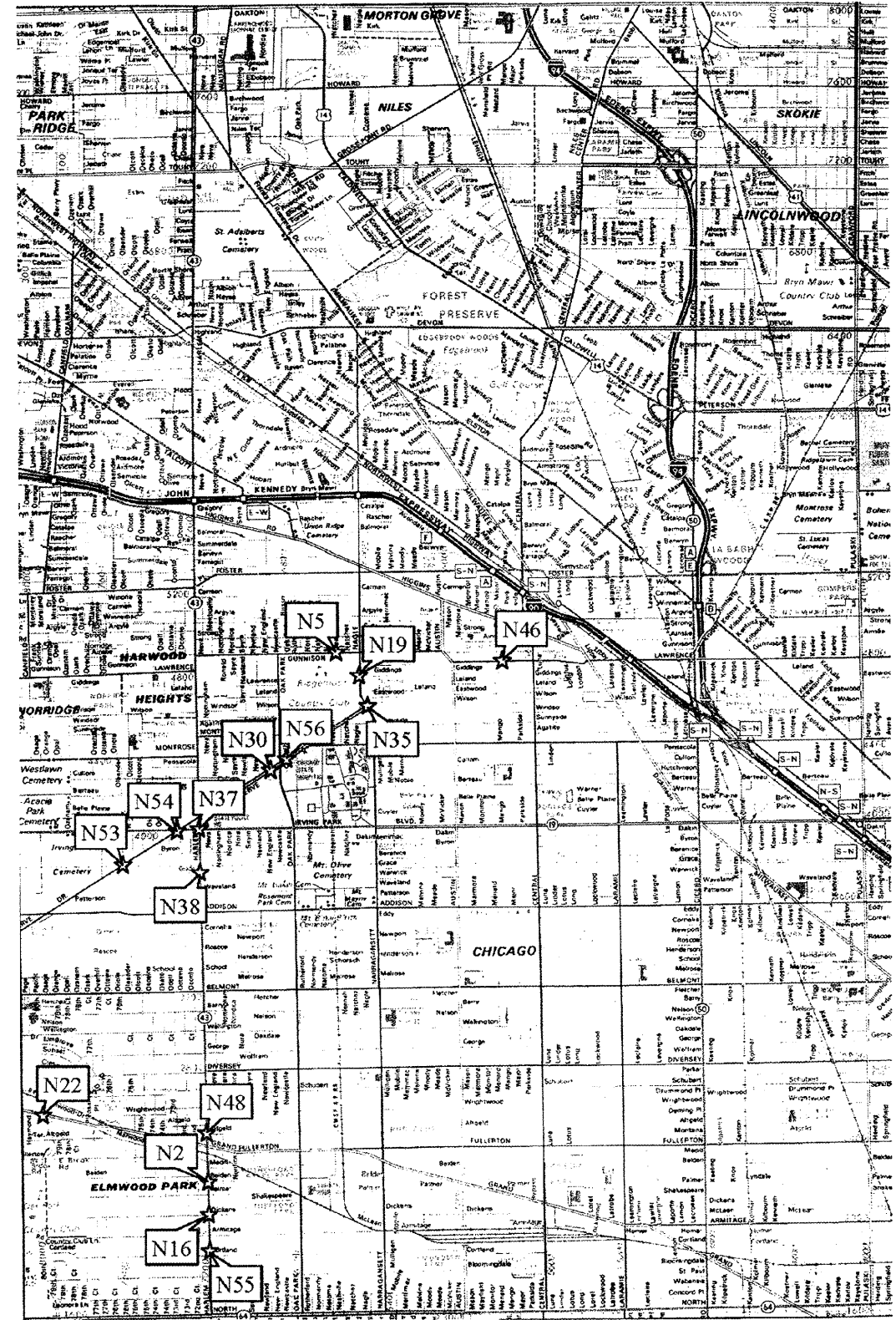
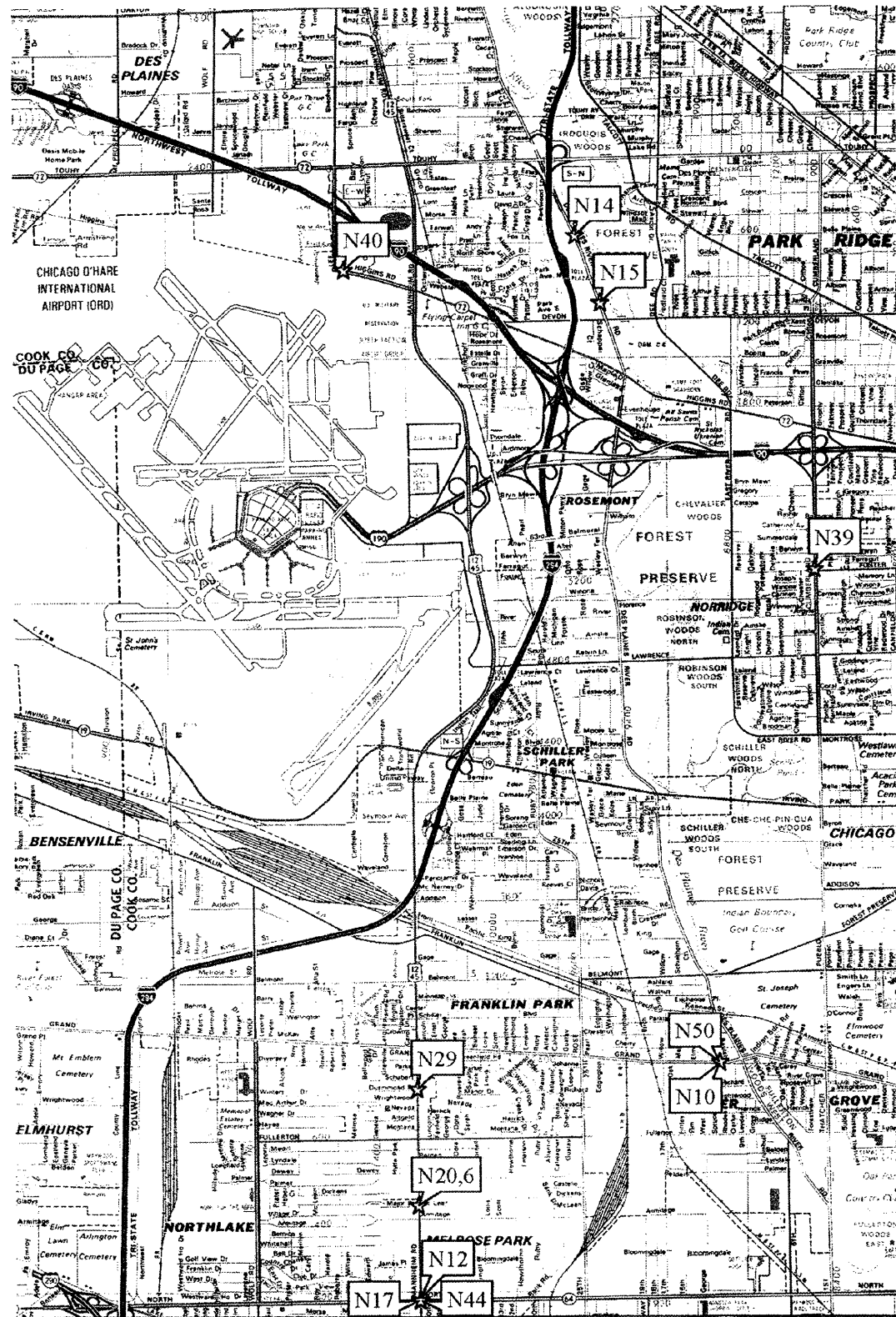
SWR#	ADDRESS	CITY	CATCH BASIN TO BE ADJUSTED (EACH)	CATCH BASIN TO BE RECONSTRUCTED (EACH)	INLET TO BE ADJUSTED (EACH)	INLET TO BE RECONSTRUCTED (EACH)	MANHOLE TO BE ADJUSTED (EACH)	MANHOLE TO BE RECONSTRUCTED (EACH)	TYPE I FRAME & OPEN LID (EACH)	TYPE I FRAME & CLOSED LID (EACH)	STORM SEWERS TO BE CLEANED (FOOT)	CURB & GUTTER REMOVE & REPLACE (FOOT)	DRAINAGE STRUCTURES TO BE CLEANED (EACH)	SIDEWALK REMOVE & REPLACE (SQ FT)	PAVEMENT PATCHING (SQ YD)	DRIVEWAY REMOVE & REPLACE (SQ YD)	DETECTABLE WARNINGS (SQ FT)	STORM SEWER TYPE I, 12" (FT)
H01	4125 W WASHINGTON	HILLSIDE	0	1	0	0	0	0	0	0	0	0	0	0	4.0	0	0	0
H03	413 MANNHEIM, IN FRONT OF DATZ DA BOMB STORE	BELLWOOD	0	1	0	0	0	0	1	0	0	4	0	0	2.7	0	0	0
H04	2420 S 17TH AVE	BROADVIEW	1	0	0	0	0	0	0	0	0	6	1	0	1.3	0	0	0
H06	9200 W/B 22ND (JUST WEST OF 17TH)	BROADVIEW	1	0	0	0	0	0	0	0	0	7	1	0	1.6	0	0	0
H07	CENTER OF FIRST AVE 20' NORTH OF BURLINGTON RR	RIVERSIDE	0	0	0	0	0	1	0	0	0	0	0	0	4.0	0	0	0
H08	W/B 47TH STREET 3 BLOCKS W. OF HARLEM, 1ST CURB & GUTTER STRUCTURE W. OF PARK DISTRICT ENTRANCE	LYONS	1	0	0	0	0	0	1	0	0	6	1	0	1.3	0	0	0
H09	W/B 47TH STREET 3 BLOCKS W. OF HARLEM, 3RD CURB & GUTTER STRUCTURE E. OF BRIDGE	LYONS	1	0	0	0	0	0	1	0	0	6	1	0	1.3	0	0	0
H10	W/B 47TH STREET 3 BLOCKS W. OF HARLEM, 2ND CURB & GUTTER STRUCTURE E. OF BRIDGE	LYONS	1	0	0	0	0	0	0	0	0	6	1	0	1.3	0	0	0
H11	W/B 47TH STREET 3 BLOCKS W. OF HARLEM, 1ST CURB & GUTTER STRUCTURE E. OF BRIDGE	LYONS	1	0	0	0	0	0	0	0	0	6	1	0	1.3	0	0	0
H12	ACROSS THE STREET FROM 9220 47TH STREET	BROOKFIELD	0	1	0	0	0	0	1	0	0	6	0	0	2.0	0	0	0
H13	9220 47TH STREET W/B	BROOKFIELD	1	0	0	0	0	0	0	0	0	5	1	0	1.7	0	0	0
H14	JOLIET RD E/B, EAST OF VALCAN MATERIALS ENTRANCE, E. SIDE OF BRIDGE	MCCOOK	1	0	0	0	0	0	0	0	0	6	1	0	1.3	0	0	0
H15	8805 JOLIET ROAD	MCCOOK	1	0	0	0	0	0	0	0	0	6	0	0	1.3	0	0	0
H16	JOLIET E/B, LANE #1 EAST OF FIRST AVE, 25' E. OF R.R. TRACKS	MCCOOK	0	0	0	0	0	1	0	1	0	N/A	1	0	4.0	0	0	0
H17	W/B ACHER AVE, JUST BEFORE CORK	JUSTICE	1	0	0	0	0	0	0	0	0	8	1	0	1.8	0	0	0
H18	7800 ARCHER AVENUE W/B	JUSTICE	1	0	0	0	0	0	0	0	0	8	1	0	1.8	0	0	0
H19	7439 55TH STREET E/B	SUMMIT	1	0	0	0	0	0	1	0	0	7	1	14	2.3	0	0	0
H20	5900 S HARLEM S/B	SUMMIT	1	0	0	0	0	0	0	0	0	5	0	10	1.1	0	0	0
H21	6144 S HARLEM S/B	SUMMIT	0	1	0	0	0	0	1	0	0	5	0	0	1.7	0	0	0
H22	7340 W 63RD STREET W/B	SUMMIT	1	0	0	0	0	0	0	0	0	8	1	0	4.4	0	0	0
H23	7029 S HARLEM ALONG CURB, APPROX. 200' NORTH OF 71ST STREET N/B	BRIDGEVIEW	0	1	0	0	0	0	0	0	0	6	0	0	1.3	0	0	0
H24	7000 S HARLEM LANE#1	BRIDGEVIEW	0	1	0	0	0	0	0	0	0	7	1	0	1.6	0	0	0
H25	7239 S HARLEM N/B	BRIDGEVIEW	0	1	0	0	0	0	0	0	0	6	0	0	1.3	0	0	0
H26	6700 SOUTH CICERO S/B AT 67TH	BEDFORD PARK	1	0	0	0	0	0	1	0	0	6	1	12	1.3	0	0	0
H27	STATE ROAD E/B ONE BLOCK WEST OF CICERO, ACROSS FROM DO NOT ENTER SIGN	BEDFORD PARK	1	0	0	0	0	0	0	0	0	9	1	0	2.0	0	0	0
H28	STATE ROAD E/B HALF BLOCK WEST OF CICERO	BEDFORD PARK	0	1	0	0	0	0	0	0	0	10	0	0	5.3	0	0	0
H29	5429 WEST ROOSEVELT ROAD	CICERO	0	1	0	0	0	0	0	0	5	10	0	0	2.2	40	0	0
H30	5525 WEST ROOSEVELT ROAD	CICERO	0	1	0	0	0	0	1	0	4	4	0	8	0.4	0	0	0
H31	ACROSS FROM 8545 WEST 79TH STREET W/B	JUSTICE	1	0	0	0	0	0	0	0	0	8	1	0	1.8	0	0	0
H32	79TH STREET JUST EAST OF 85TH CT E/B	JUSTICE	1	0	0	0	0	0	0	0	0	6	0	0	1.3	12	0	0
H33	7240 WEST 79TH STREET W/B	BRIDGEVIEW	0	1	0	0	0	0	0	0	0	6	1	12	1.3	0	0	0
H34	7812 WEST 79TH STREET W/B	BRIDGEVIEW	0	1	0	0	0	0	0	0	0	6	1	0	1.3	12	0	0

SWR#	ADDRESS	CITY	CATCH BASIN TO BE ADJUSTED (EACH)	CATCH BASIN TO BE RECONST. (EACH)	INLET TO BE ADJUSTED (EACH)	INLET TO BE RECONST (EACH)	MANHOLE TO BE ADJUSTED (EACH)	MANHOLE TO BE RECONST. (EACH)	TYPE I FRAME & OPEN LID (EACH)	TYPE I FRAME & CLOSED LID (EACH)	STORM SEWERS TO BE CLEANED (FOOT)	CURB & GUTTER REMOVE & REPLACE (FOOT)	DRAINAGE STRUCTURES TO BE CLEANED (EACH)	SIDEWALK REMOVE & REPLACE (SQ FT)	PAVEMENT PATCHING (SQ YD)	DRIVEWAY REMOVE & REPLACE (SQ YD)	DETECTABLE WARNINGS (SQ FT)	STORM SEWER TYPE I, 12" (FT)
H36	79TH STREET AT MCVICKER E/B	BURBANK	0	1	0	0	0	0	0	0	0	6	1	0	1.3	0	0	0
H37	5835 WEST 79TH STREET E/B	BURBANK	0	1	0	0	0	0	0	0	0	8	1	0	1.8	0	0	0
H38	79TH STREET AT LAPORTE W/B	BURBANK	1	0	0	0	0	0	0	0	0	6	0	0	1.3	0	0	0
H39	4849 WEST 79TH STREET, AT BAKER'S SQUARE ENTRANCE E/B	BURBANK	1	0	0	0	0	0	0	0	0	8	0	0	1.8	16	0	0
H40	5750 WEST 79TH STREET W/B	BURBANK	1	0	0	0	0	0	0	0	0	7	0	0	1.6	0	0	0
H41	5952 WEST 79TH STREET W/B	BURBANK	1	0	0	0	0	0	0	0	0	6	0	0	1.3	0	0	0
H42	79TH STREET AT MOBILE W/B	BURBANK	0	1	0	0	0	0	1	0	0	6	1	0	1.3	0	0	0
H43	79TH STREET AT NEW ENGLAND W/B	BURBANK	1	0	0	0	0	0	1	0	0	6	1	0	1.3	0	0	0
H44	HARLEM AVENUE AT 74TH STREET S/B	BURBANK	0	1	0	0	0	0	1	0	0	10	0	0	2.2	0	0	0
H45	717 SOUTH LAGRANGE ROAD	LAGRANGE	1	0	0	0	0	0	0	0	0	7	1	0	1.6	0	0	0
H46	HARLEM AVENUE 300' SOUTH OF 25TH STREET S/B	NORTH RIVERSIDE	1	0	0	0	0	0	0	0	0	5	1	10	1.7	0	0	0
H47	HARLEM AVENUE 350' SOUTH OF 25TH STREET S/B	NORTH RIVERSIDE	0	1	0	0	0	0	1	0	0	10	0	18	6.7	0	0	0
H48	HARLEM AVENUE AT QUICK STREET	RIVER FOREST	1	0	0	0	0	0	0	0	0	10	1	20	2.0	0	0	0
H49	TAFT STREET AT MAPLE S/B, N.W. CORNER	BERKLEY	1	0	0	0	0	0	0	0	0	6	1	0	4.4	0	0	0
H50	TAFT STREET AT RIDGE, N.W. CORNER	BERKLEY	1	0	0	0	0	0	0	0	0	8	1	16	2.7	0	0	0
H51	1842 SOUTH TAFT	BERKLEY	0	1	0	0	0	0	1	0	0	6	0	0	2.7	0	0	0
H52	1844 SOUTH TAFT	BERKLEY	1	0	0	0	0	0	0	0	0	6	1	0	2.7	0	0	0
H53	1936 SOUTH TAFT	BERKLEY	0	1	0	0	0	0	0	0	0	9	1	0	4.0	0	0	0
H54	S.E. CORNER OF TAFT @ MADISON	BERKLEY	1	0	0	0	0	0	0	0	0	6	1	10	2.7	0	8	0
H56	79TH STREET WEST OF CORK LANE #1	WILLOW SPRINGS	0	1	0	0	0	0	1	0	0	6	0	0	1.3	0	0	0
H57	7358 CICERO AVE N/B AT FOUR POINT SHERATON, S. ENTRANCE	CHICAGO	0	1	0	0	0	0	0	0	0	6	0	0	1.3	0	0	0
H58	CICERO AVENUE AT 72ND STREET N/B	CHICAGO	0	0	0	0	0	0	0	0	0	0	1	0	0.0	0	0	0
H59	CICERO AVE 125' S. OF 71ST STREET, N/B LANE 1	CHICAGO	0	0	0	0	0	1	0	0	0	0	1	0	4.0	0	0	0
H60	CICERO AVE 135' S. OF 71ST STREET, N/B LANE 3 BY FIRE HYDRANT	CHICAGO	0	0	0	0	0	1	0	0	0	0	1	0	4.0	0	0	0
H61	CICERO AVENUE AT 64TH STREET N/B LANE #1, ACROSS FROM MCDONALDS	CHICAGO	0	1	0	0	0	0	0	0	0	0	0	0	10.7	0	0	0
H62	CICERO AVENUE AT 64TH STREET N/B LANE #3, ACROSS FROM MCDONALDS	CHICAGO	0	1	0	0	0	0	1	0	0	6	0	0	1.3	0	0	0
N02	2222 NORTH HARLEM AVENUE	ELMWOOD PARK	0	1	0	0	0	0	1	0	0	6	0	0	2.7	0	0	0
N05	6500 W GUNNISON	HARWOOD HGTS	0	0	0	1	0	0	0	0	0	8	0	0	1.8	0	0	0
N08	25TH AVENUE AT THOMAS, DRIVEWAY OF GAS STATION	MELROSE PARK	0	0	0	1	0	0	1	0	0	6	0	0	1.3	32	0	0
N10	8923 WEST GRAND AVENUE	RIVER GROVE	1	0	0	0	0	0	0	0	0	0	0	0	1.0	0	0	0
N12	MANNHEIM ROAD 25' N. OF NORTH AVE S/B	MELROSE PARK	0	0	0	0	0	1	0	1	0	6	0	0	2.7	0	0	0
N14	2700 BLOCK OF RIVER ROAD S/B	DESPLAINES	0	0	1	0	0	0	1	0	0	6	1	0	0.0	0	0	0
N15	3150 RIVER ROAD	DESPLAINES	1	0	0	0	0	0	0	0	0	0	0	0	0.0	0	0	15
N16	2100 NORTH HARLEM AVENUE	ELMWOOD PARK	1	0	0	0	0	0	0	0	0	6	1	0	1.3	0	0	0
N17	S/W CORNER OF MANNHEIM BRIDGE AT NORTH AVE	MELROSE PARK	0	0	1	0	0	0	0	0	0	0	1	0	4.0	0	0	0
N19	4723 NORTH NAGLE	HARWOOD HGTS	1	0	0	0	0	0	0	0	0	6	1	0	2.0	0	0	0

FILE NAME =	USER NAME = .USER.	DESIGNED -	REVISED -	<b>STATE OF ILLINOIS DEPARTMENT OF TRANSPORTATION</b>	<b>CENTRAL COOK COUNTY DRAINAGE REPAIRS</b>				F.A.P. RTE.	SECTION	COUNTY	TOTAL SHEETS	SHEET NO.
#FILEL*		DRAWN -	REVISED -		SCALE: 20	SHEET NO.	OF	SHEETS	STA.	TO STA.	COOK	12	5
	PLOT SCALE = 48,0000 "/ IN.	CHECKED -	REVISED -						CONTRACT NO. 60H75				
	PLOT DATE = 7/8/2009	DATE -	REVISED -						ILLINOIS FED. AID PROJECT				

SWR#	ADDRESS	CITY	CATCH BASIN TO BE ADJUSTED (EACH)	CATCH BASIN TO BE RECONST. (EACH)	INLET TO BE ADJUSTED (EACH)	INLET TO BE RECONST (EACH)	MANHOLE TO BE ADJUSTED (EACH)	MANHOLE TO BE RECONST. (EACH)	TYPE I FRAME & OPEN LID (EACH)	TYPE I FRAME & CLOSED LID (EACH)	STORM SEWERS TO BE CLEANED (FOOT)	CURB & GUTTER REMOVE & REPLACE (FOOT)	DRAINAGE STRUCTURES TO BE CLEANED (EACH)	SIDEWALK REMOVE & REPLACE (SQ FT)	PAVEMENT PATCHING (SQ YD)	DRIVEWAY REMOVE & REPLACE (SQ YD)	DETECTABLE WARNINGS (SQ FT)	STORM SEWER TYPE 1, 12" (FT)
H01	4125 W WASHINGTON	HILLSIDE	0	1	0	0	0	0	0	0	0	0	0	0	4.0	0	0	0
N17	S/W CORNER OF MANNHEIM BRIDGE AT NORTH AVE	MELROSE PARK	0	0	1	0	0	0	0	0	0	0	1	0	4.0	0	0	0
N19	4723 NORTH NAGLE	HARWOOD HGTS	1	0	0	0	0	0	0	0	0	6	1	0	2.0	0	0	0
N20,6	2031 NORTH MANNHEIM	MELROSE PARK	0	1	0	0	0	0	1	0	0	6	1	12	1.3	0	0	0
N22	8001 W GRAND AVENUE	RIVER GROVE	0	1	0	0	0	0	1	0	0	8	1	0	2.7	0	0	0
N27	1502 25TH AVENUE, 10' S. OF BLDG. ENTRANCE	MELROSE PARK	1	0	0	0	0	0	0	0	0	10	1	0	3.3	0	0	0
N28	CORTEZ AT 25TH AVENUE	MELROSE PARK	0	0	0	1	0	0	0	0	0	10	0	0	3.3	0	0	0
N29	2633 NORTH MANNHEIM N/B	FRANKLIN PARK	0	1	0	0	0	0	1	0	0	6	0	0	2.0	0	0	0
N30	6843 WEST FOREST PRESERVE DRIVE	CHICAGO	0	0	0	0	0	0	0	0	0	0	1	0	0.0	0	0	0
N32	1677 NORTH MANNHEIM ROAD	STONE PARK	0	0	0	1	0	0	1	0	0	8	0	0	3.6	0	0	0
N33	1665 NORTH MANNHEIM ROAD	STONE PARK	0	1	0	0	0	0	1	0	0	6	1	20	2.7	0	0	0
N34	25TH AVENUE AT AUGUSTA	MELROSE PARK	0	1	0	0	0	0	1	0	0	10	0	0	5.6	0	0	0
N35	4558 NORTH NAGLE	HARWOOD HGTS	1	0	0	0	0	0	0	0	0	0	1	0	2.7	0	0	0
N37	HARLEM AVE AT IRVING PARK S/B	CHICAGO	0	1	0	0	0	0	0	0	0	8	0	0	2.7	0	0	0
N38	3764 N HARLEM AVENUE	CHICAGO	0	1	0	0	0	0	0	0	0	10	0	0	1.3	0	0	0
N39	CUMBERLAND AVE JUST NORTH OF FOSTER N/B	NORRIDGE	0	0	0	1	0	0	0	0	0	5	0	0	1.1	0	0	0
N40	10700 WEST HIGGINS W/B	ROSEMONT	0	0	0	1	0	0	1	0	0	6	0	0	1.3	0	0	0
N41,25	3800 LAKE STREET	MELROSE PARK	0	0	0	0	0	0	0	1	0	0	0	0	4.0	0	0	0
N44	1905 NORTH MANNHEIM	MELROSE PARK	0	0	1	0	0	0	1	0	0	6	1	0	0.0	0	0	0
N45	11633 WEST GRAND AVENUE	MELROSE PARK	0	0	0	0	0	0	0	0	0	0	0	0	10.7	0	0	0
N46	5727 WEST LAWRENCE	CHICAGO	0	0	0	0	0	0	0	0	0	0	1	0	0.0	0	0	0
N47	5432 NORTH CANFIELD AT RASCHER	CHICAGO	0	0	0	0	0	0	0	1	0	0	0	0	6.7	0	0	0
N48	2500 NORTH HARLEM AVENUE	ELMWOOD PARK	0	0	0	1	0	0	1	0	0	12	0	0	2.7	0	0	0
N50	8906 WEST GRAND AVENUE	RIVER GROVE	0	0	1	0	0	0	0	0	0	6	1	0	2.0	0	0	0
N53	S.E. CORNER OF FOREST PRESERVE @ ORIOLE AVE	CHICAGO	0	0	1	0	0	0	0	0	0	7	0	0	2.3	0	0	0
N54	ACROSS FROM 7311 WEST FOREST PRESERVE DR	CHICAGO	0	1	0	0	0	0	0	0	0	9	0	0	3.0	0	0	0
N55	1930 NORTH HARLEM AVENUE	ELMWOOD PARK	0	1	0	0	0	0	0	0	0	10	0	0	15.0	0	0	0
N56	6764 WEST FOREST PRESERVE DRIVE	HARWOOD HGTS	0	0	1	0	0	0	0	0	15	10	1	0	2.7	0	0	0
<b>TOTALS</b>			<b>37</b>	<b>33</b>	<b>6</b>	<b>7</b>	<b>0</b>	<b>8</b>	<b>27</b>	<b>4</b>	<b>24</b>	<b>547</b>	<b>49</b>	<b>162.0</b>	<b>233.0</b>	<b>112.0</b>	<b>8.0</b>	<b>15.0</b>



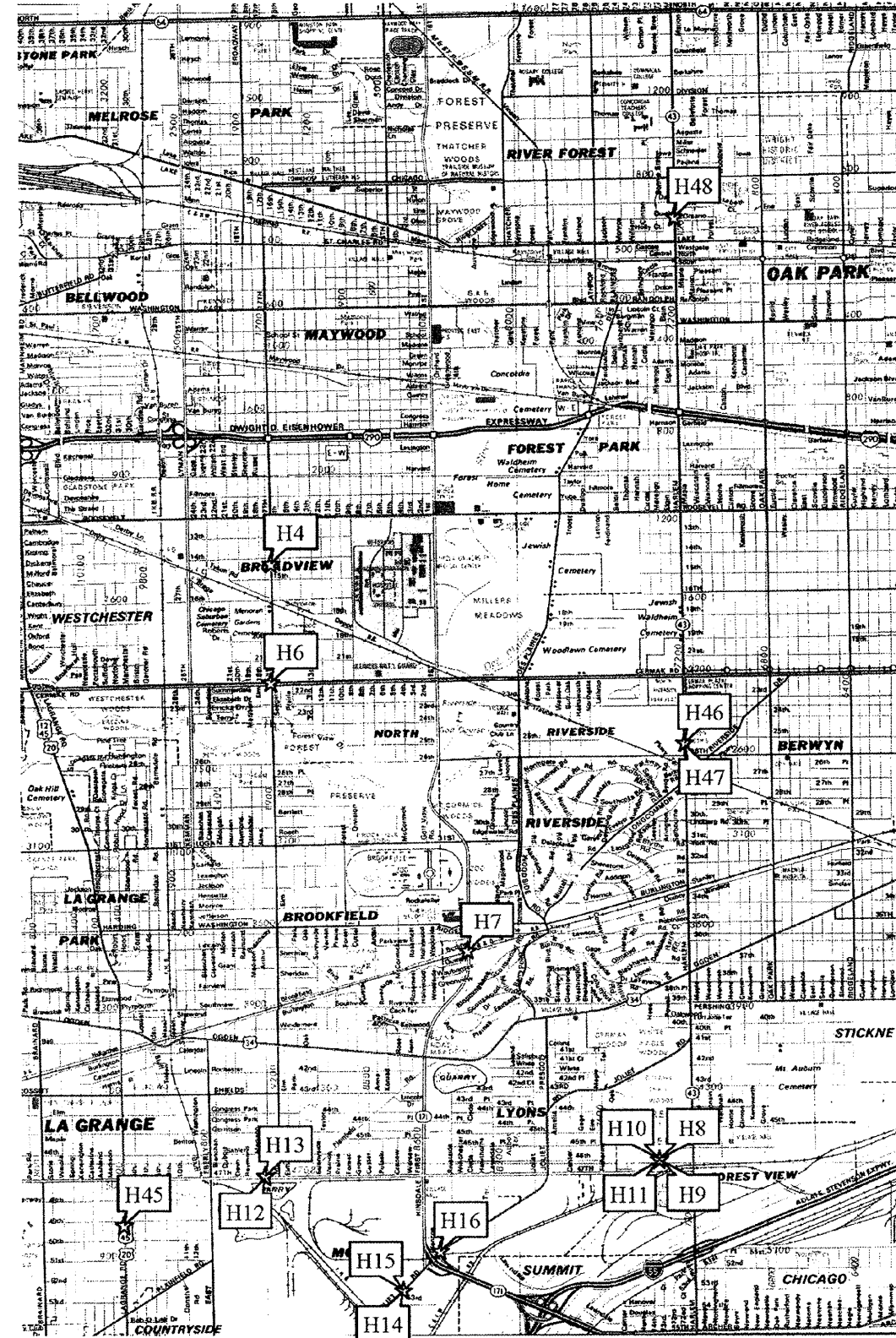
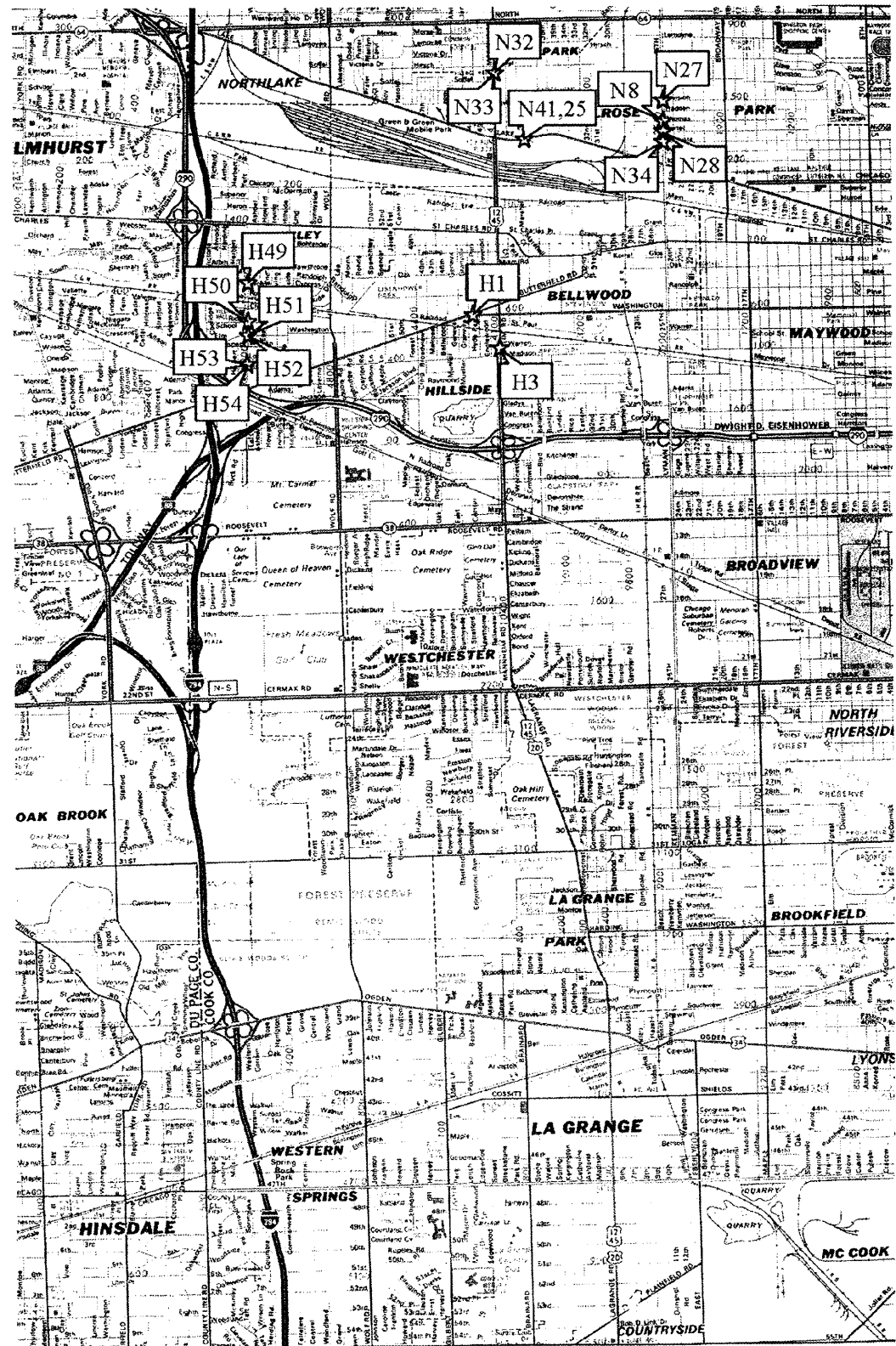


FILE NAME =	USER NAME = .USER.	DESIGNED -	REVISED -
#FILEL#		DRAWN -	REVISED -
	PLOT SCALE = 40,0000' / IN.	CHECKED -	REVISED -
	PLOT DATE = 7/8/2009	DATE -	REVISED -

**STATE OF ILLINOIS  
DEPARTMENT OF TRANSPORTATION**

<b>HILLSIDE AND NORTHSIDE TEAM SECTIONS DRAINAGE REPAIRS</b>			
SCALE: 20	SHEET NO.	OF SHEETS	STA. TO STA.

F.A.P. RTE.	SECTION	COUNTY	TOTAL SHEETS	SHEET NO.
	2009-068 T	COOK	12	7
			CONTRACT NO. 60H75	
ILLINOIS FED. AID PROJECT				



FILE NAME = #FILEL4  
 USER NAME = .USER.  
 PLOT SCALE = 48.0000' / IN.  
 PLOT DATE = 7/8/2009

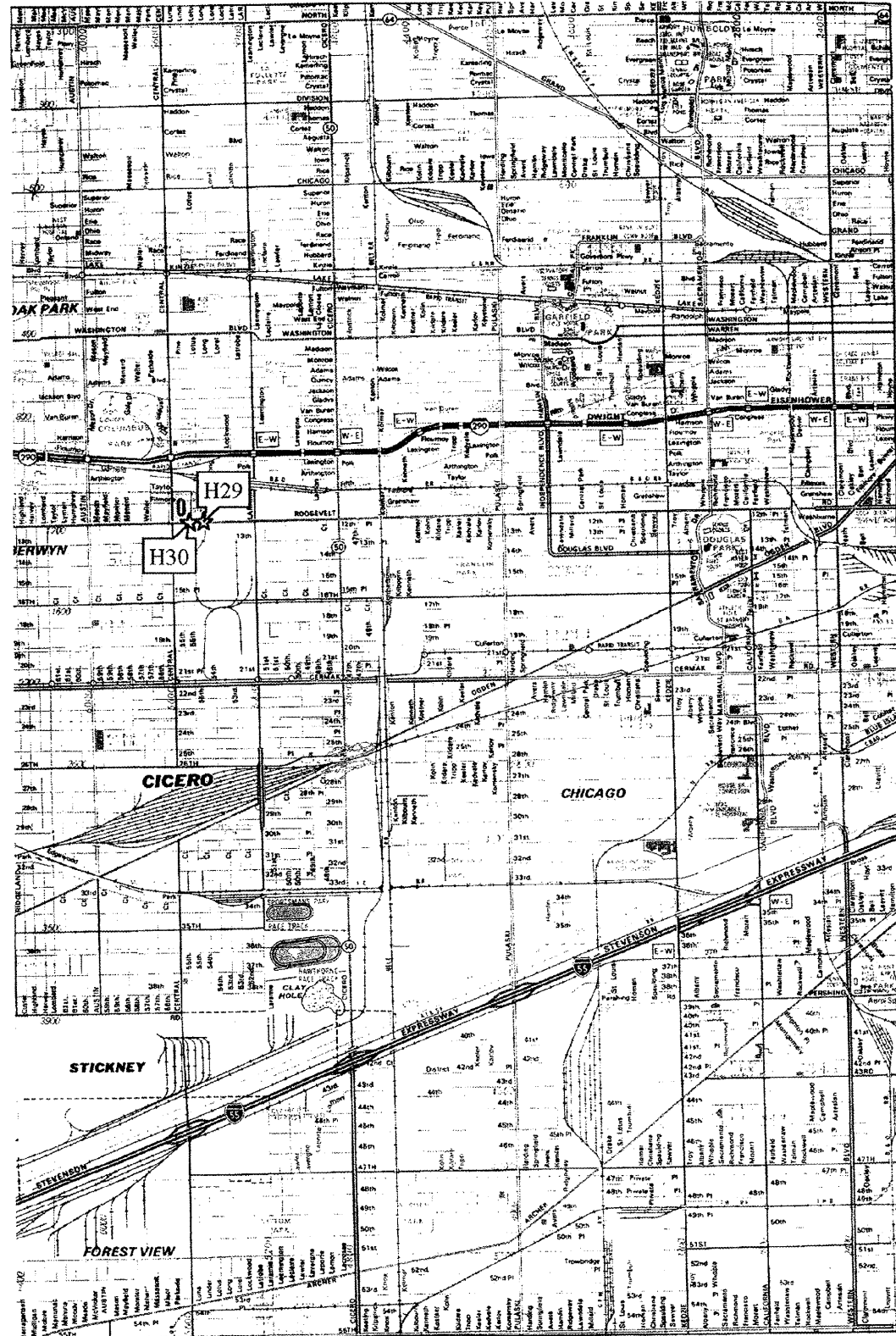
DESIGNED -	REVISED -
DRAWN -	REVISED -
CHECKED -	REVISED -
DATE -	REVISED -

**STATE OF ILLINOIS  
 DEPARTMENT OF TRANSPORTATION**

**HILLSIDE AND NORTHSIDE SECTIONS  
 DRAINAGE REPAIRS**  
 SCALE: 20 SHEET NO. OF SHEETS STA. TO STA.

F.A.P. RTE.	SECTION	COUNTY	TOTAL SHEETS	SHEET NO.
	2009-068 T	COOK	12	8
ILLINOIS FED. AID PROJECT			CONTRACT NO. 60HT5	





FILE NAME :  
#FILEL6

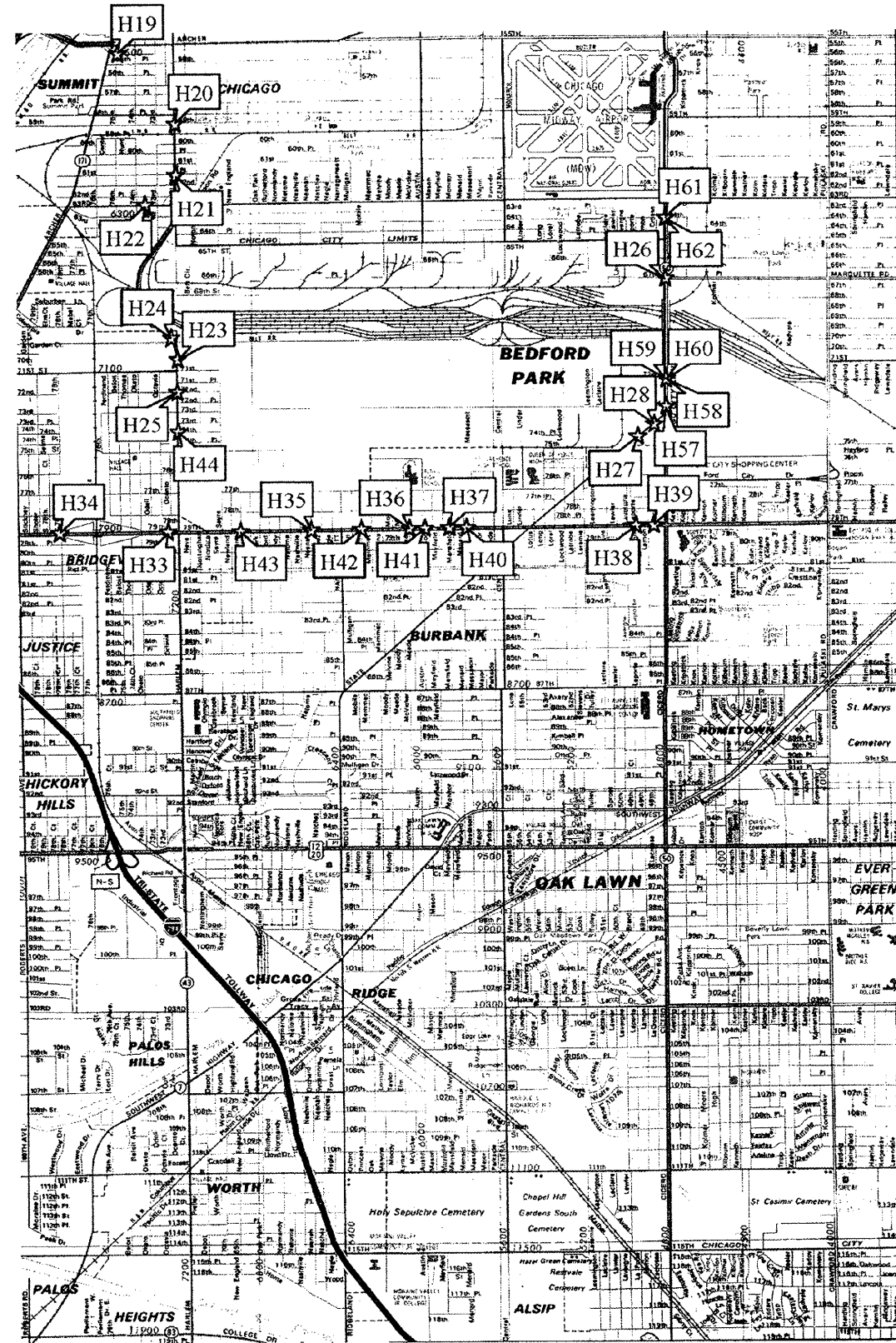
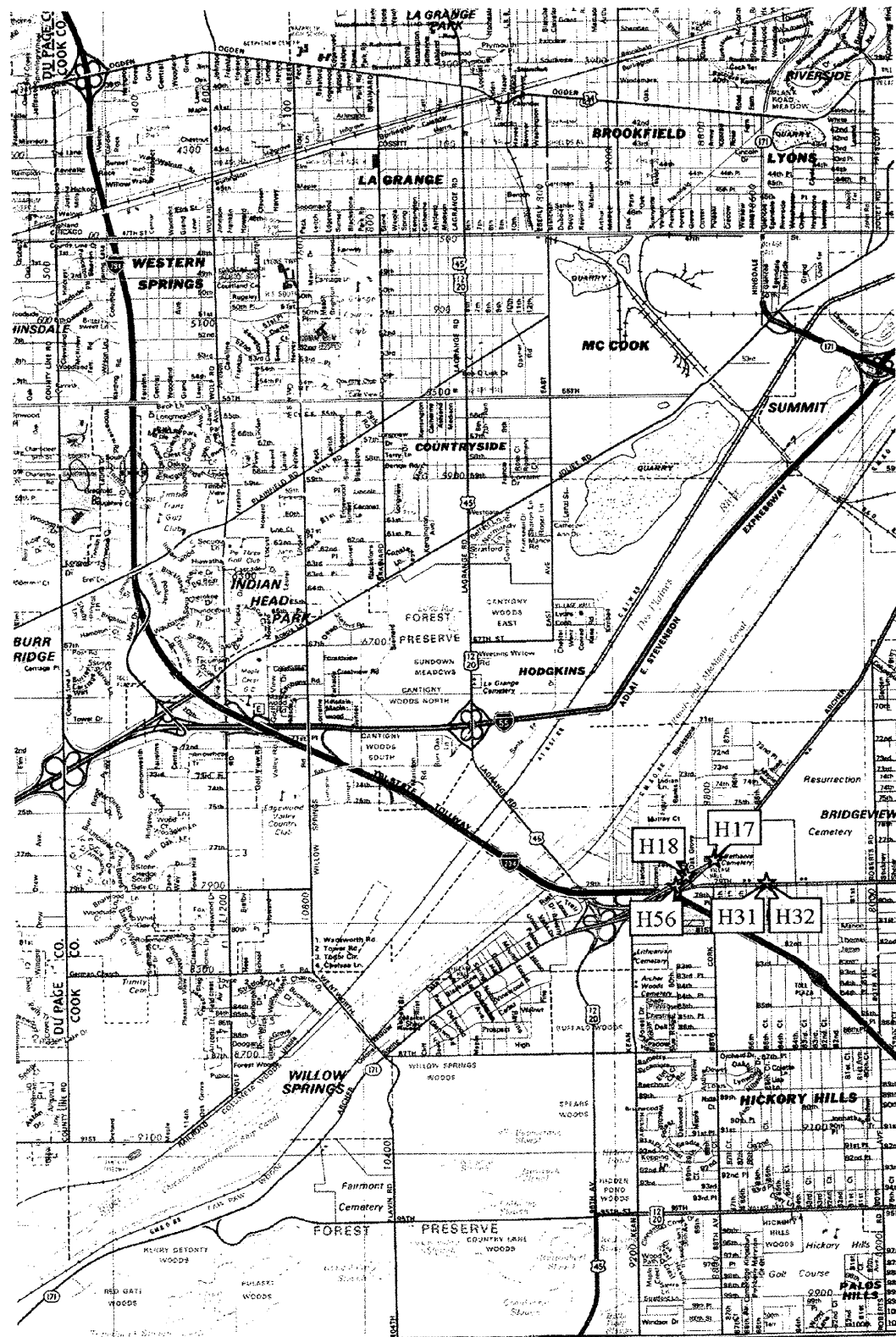
USER NAME = _USER_	DESIGNED -	REVISED -
PLOT SCALE = 40,0000' / IN.	DRAWN -	REVISED -
PLOT DATE = 7/8/2009	CHECKED -	REVISED -
	DATE -	REVISED -

**STATE OF ILLINOIS  
DEPARTMENT OF TRANSPORTATION**

**HILLSIDE AND NORTHSIDE TEAM SECTIONS  
DRAINAGE REPAIRS**

SCALE: 20 SHEET NO. OF SHEETS STA. TO STA.

F.A.P. RTE.	SECTION	COUNTY	TOTAL SHEETS	SHEET NO.
	2009-06B T	COOK	12	9
			CONTRACT NO. 60H75	
ILLINOIS FED. AID PROJECT				



FILE NAME =  
#FILE#

USER NAME = .USER.  
PLOT SCALE = 40.0000' / IN.  
PLOT DATE = 7/8/2009

DESIGNED -  
DRAWN -  
CHECKED -  
DATE -

REVISED -  
REVISED -  
REVISED -  
REVISED -

**STATE OF ILLINOIS  
DEPARTMENT OF TRANSPORTATION**

SCALE: 20  
SHEET NO. OF SHEETS STA. TO STA.

**HILLSIDE AND NORTHSIDE TEAM SECTIONS  
DRAINAGE REPAIRS**

F.A.P. RTE.	SECTION	COUNTY	TOTAL SHEETS	SHEET NO.
	2009-068 1	COOK	12	10
CONTRACT NO. 60H75				
ILLINOIS FED. AID PROJECT				

VARIABLE - TO MEET EXISTING DIMENSIONS AND FIELD CONDITIONS (SEE NOTE ②)

PROP. CONC. CURB OR CURB AND GUTTER REPLACEMENT IN ACCORDANCE WITH STATE STANDARD 606001. (SEE NOTE ②)

SAW CUT FULL DEPTH - INCLUDED IN THE COST OF SIDEWALK, DRIVEWAY OR MEDIAN SURFACE REMOVAL PAY ITEM.

SEE STATE STANDARD 606001  
EXISTING OR PROPOSED HMA SURFACE (IF APPLICABLE)

18" (450) MAX.

1/4" (5) \*\*

EXISTING SIDEWALK, DRIVEWAY, MEDIAN SURFACE OR GROUND.

PROPOSED SIDEWALK, DRIVEWAY PAVEMENT, MEDIAN SURFACE OR SALT TOLERANT SOD AND TOP SOIL, 4" (100) SOD RESTORATION (SEE NOTE ①).

EXISTING CONCRETE PAVEMENT, CONCRETE BASE COURSE OR FLEXIBLE PAVEMENT

3" (75) MIN.

SUITABLE BACKFILL MATERIAL (INCLUDED IN THE COST OF CURB OR CURB AND GUTTER REMOVAL AND REPLACEMENT)

PROPOSED 3/4" (20) PREFORMED EXPANSION JOINT AT CONCRETE SIDEWALKS, DRIVEWAYS, AND MEDIANS. (INCLUDED IN THE COST OF CURB OR CURB AND GUTTER REMOVAL AND REPLACEMENT.)

\* 3" (75) MINIMUM FROM TOP AND BOTTOM OF THE CONCRETE PAVEMENT OR BASE COURSE.

\*\* IF THE FINAL SURFACE OF THE PAVEMENT IS CONCRETE, THE GUTTER IS TO BE FLUSH WITH THE PAVEMENT.

NOTE: ① SIDEWALK, DRIVEWAY PAVEMENT OR MEDIAN SURFACE SHALL BE SIMILAR TO THE MATERIAL BEING REMOVED AND WILL BE PAID FOR SEPARATELY.

SALT TOLERANT SOD AND TOP SOIL, 4" (100) RESTORATION WILL NOT BE PAID FOR SEPARATELY, BUT SHALL BE INCLUDED IN THE COST OF CURB OR CURB AND GUTTER REMOVAL AND REPLACEMENT.

② CURB OR CURB AND GUTTER REPLACEMENT SHALL MATCH THE SHAPE OF THE EXISTING CURB OR CURB AND GUTTER UNLESS OTHERWISE SPECIFIED.

③ FOR CURB OR CURB AND GUTTER REMOVAL AND REPLACEMENT ADJACENT TO FLEXIBLE PAVEMENT DELETE EPOXY COATED TIE BARS.

④ LONGITUDINAL BARS, IF ENCOUNTERED IN THE EXISTING CURB OR CURB AND GUTTER, ARE NOT TO BE REPLACED. CUTTING AND REMOVING LONGITUDINAL BARS SHALL BE INCLUDED IN THE COST OF CURB OR CURB AND GUTTER REMOVAL AND REPLACEMENT.

⑤ THE COST OF HMA SURFACE REMOVAL IN THE EXISTING GUTTER FLAG SHALL BE INCLUDED IN THE COST OF THE CURB AND GUTTER REMOVAL AND REPLACEMENT.

⑥ THE REMOVAL AND REPLACEMENT OF THE EXISTING CURB OR CURB AND GUTTER SHALL BE DONE IN ACCORDANCE WITH THE APPLICABLE PORTIONS OF SECTION 440 AND 606 OF THE STANDARD SPECIFICATIONS.

⑦ THE LOCATIONS OF REMOVAL AND REPLACEMENT OF EXISTING CURB OR CURB AND GUTTER SHALL BE DETERMINED BY THE RESIDENT ENGINEER AT THE TIME OF CONSTRUCTION.

UNSUITABLE SUB-BASE MATERIAL TO BE REMOVED, IF DIRECTED BY THE ENGINEER, SHALL BE REPLACED WITH EITHER SUB-BASE GRANULAR MATERIAL, TYPE B OR ADDITIONAL THICKNESS OF CONCRETE.

REMOVAL AND REPLACEMENT 4" (100) OR LESS IS INCLUDED IN THE COST OF CURB OR CURB AND GUTTER REMOVAL AND REPLACEMENT.

REMOVAL AND REPLACEMENT IN EXCESS OF 4" (100) WILL BE PAID FOR IN ACCORDANCE WITH ARTICLE 109.04 OF THE STANDARD SPECIFICATIONS.

PROPOSED #6 (20) EPOXY COATED TIE BARS 24" (600) LONG AT 24" (600) CENTERS WILL NOT BE PAID FOR SEPARATELY. DELETE EPOXY COATED TIE BARS IF EXISTING TIE BARS ARE USUABLE AS DETERMINED BY THE ENGINEER. (SEE NOTE ③).

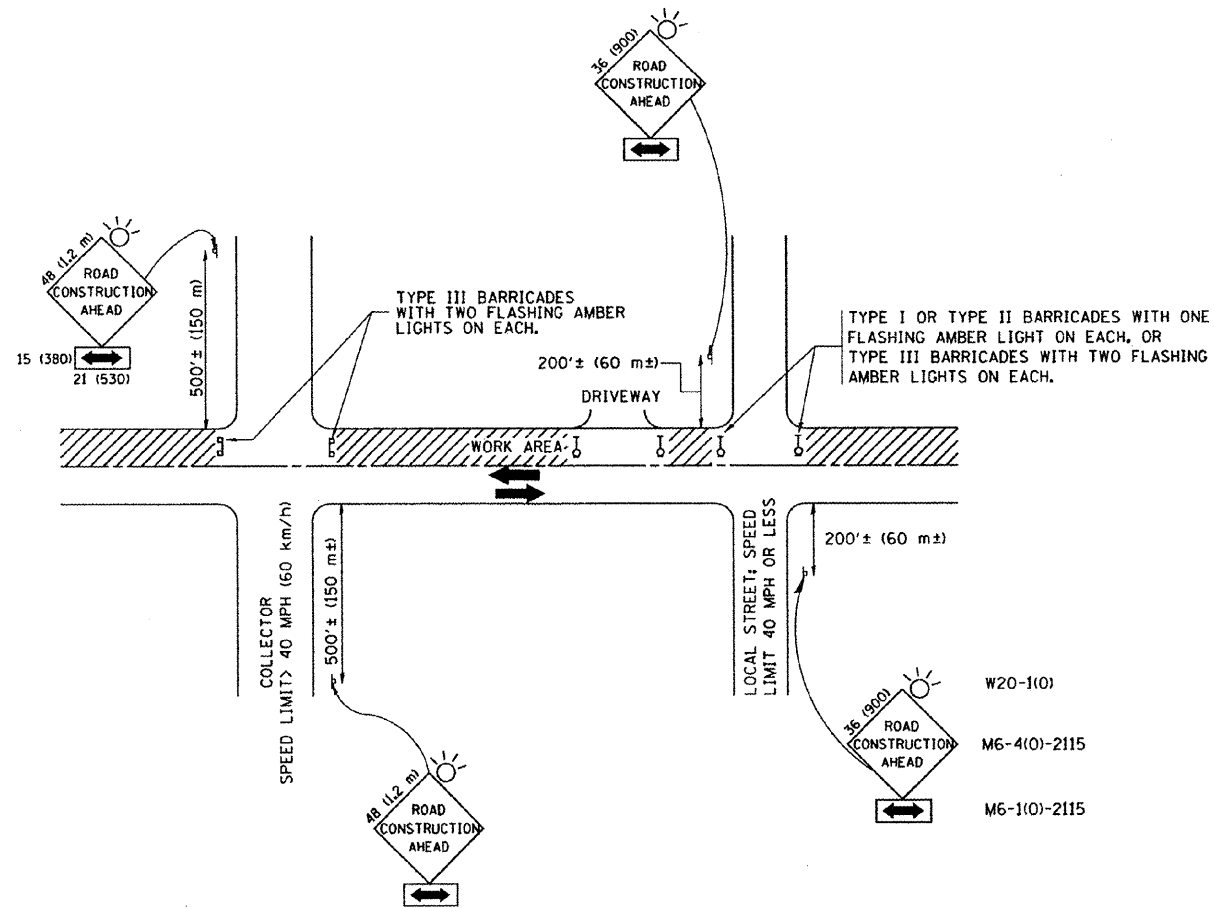
**BASIS OF PAYMENT:**

THIS WORK WILL BE PAID FOR AT THE CONTRACT UNIT PRICE PER FOOT (METER) FOR "CURB REMOVAL AND REPLACEMENT" OR "COMBINATION CONCRETE CURB AND GUTTER REMOVAL AND REPLACEMENT".

# CURB OR CURB AND GUTTER REMOVAL AND REPLACEMENT

ALL DIMENSIONS ARE IN INCHES (MILLIMETERS) UNLESS OTHERWISE SHOWN.

FILE NAME = W:\distatd\22x34\bd24.dgn	USER NAME = gegltonbt	DESIGNED - A. HOUSEH	REVISED - R. SHAH 10-03-96	<b>STATE OF ILLINOIS DEPARTMENT OF TRANSPORTATION</b>	<b>CURB OR CURB AND GUTTER REMOVAL AND REPLACEMENT</b>	F.A.P. RTE.	SECTION	COUNTY	TOTAL SHEETS	SHEET NO.
		DRAWN -	REVISED - A. ABBAS 03-21-97			2006-058 T	COOK	12	11	
		PLOT SCALE = 58.800' / IN.	REVISED - M. GOMEZ 01-22-01			<b>BD600-06 (BD-24)</b>		CONTRACT NO.		
		PLOT DATE = 1/4/2008	REVISED - R. BORO 01-01-07			SCALE: NONE	SHEET NO. 1 OF 1 SHEETS	STA.	TO STA.	FED. ROAD DIST. NO. 1   ILLINOIS   FED. AID PROJECT



**TRAFFIC CONTROL AND PROTECTION FOR SIDE ROADS, INTERSECTIONS, AND DRIVEWAYS**

**NOTES:**

- A. FOR NO LANE RESTRICTION ON THE SIDE ROAD OR DRIVEWAYS
  - 1. SIDE ROAD WITH A SPEED LIMIT OF 40 MPH (60 km/h) OR LESS AS SHOWN ON THE DRAWING AND AS DIRECTED BY THE ENGINEER:
    - a) ONE ROAD CONSTRUCTION AHEAD SIGN 36 x 36 (900x900) WITH A FLASHER AND FLAG MOUNTED ON IT APPROXIMATELY 200' (60 m) IN ADVANCE OF THE MAIN ROUTE.
    - b) THE CLOSED PORTION OF THE MAIN ROUTE SHALL BE PROTECTED BY BLOCKING WITH TYPE I, TYPE II OR TYPE III BARRICADES, 1/3 OF THE CROSS SECTION OF THE CLOSED PORTION.
  - 2. SIDE ROAD WITH A SPEED LIMIT GREATER THAN 40 MPH (60 km/h) AS SHOWN ON THE DRAWING AND AS DIRECTED BY THE ENGINEER:
    - a) ONE ROAD CONSTRUCTION AHEAD SIGN 48 x 48 (1,2 m x 1,2 m) WITH A FLASHER MOUNTED ON IT APPROXIMATELY 500' (150 m) IN ADVANCE OF THE MAIN ROUTE.
    - b) THE CLOSED PORTION OF THE MAIN ROUTE SHALL BE PROTECTED BY BLOCKING WITH TYPE III BARRICADES, 1/2 OF THE CROSS SECTION OF THE CLOSED PORTION.
  - 3. WHEN THE SIDE ROAD LIES BETWEEN THE BEGINNING OF THE MAINLINE SIGNING AND THE WORK ZONE, A SINGLE HEADED ARROW (M6-1) SHALL BE USED IN LIEU OF THE DOUBLE HEADED ARROW (M6-4).
- B. FOR A LANE CLOSURE ON A SIDE ROAD OR DRIVEWAY:
  - USE APPLICABLE PORTIONS OF THE TYPICAL APPLICATION OF TRAFFIC CONTROL DEVICES (STD. 701501, STD. 701606 OR THE APPROPRIATE STANDARD). THE SPACING OF SIGNS AND BARRICADES SHALL BE ADJUSTED FOR FIELD CONDITIONS AS DIRECTED BY THE ENGINEER. THE DIRECTIONAL ARROW SHALL BE COVERED OR REMOVED WHEN NO LONGER CONSISTENT WITH THE SIDE ROAD LANE CLOSURE.
- C. ADVANCE WARNING SIGNS ARE TO BE OMITTED ON DRIVEWAY UNLESS OTHERWISE NOTED.
- D. THE TRAFFIC CONTROL AND PROTECTION FOR SIDE ROADS, INTERSECTIONS, AND DRIVEWAYS SHALL BE INCIDENTAL TO THE COST OF SPECIFIED TRAFFIC CONTROL STANDARDS OR ITEMS.

All dimensions are in millimeters (inches) unless otherwise shown.

FILE NAME =	USER NAME = gagliemobt	DESIGNED - LHA	REVISED - J. OBERLE 10-18-95
W:\distatd\22x34\tbl0.dgn		DRAWN -	REVISED - A. HOUSEH 03-06-96
	PLOT SCALE = 50,000 / / IN.	CHECKED -	REVISED - A. HOUSEH 10-15-96
	PLOT DATE = 1/4/2000	DATE - 06-89	REVISED - T. RAMMACHER 01-06-00

**STATE OF ILLINOIS  
DEPARTMENT OF TRANSPORTATION**

TRAFFIC CONTROL AND PROTECTION FOR SIDE ROADS, INTERSECTIONS, AND DRIVEWAYS	
SCALE: NONE	SHEET NO. 1 OF 1 SHEETS
STA.	TO STA.

F.A.P. RTE.	SECTION	COUNTY	TOTAL SHEETS	SHEET NO.
	2006-068 T	COOK	12	12
TC-10		CONTRACT NO.		
FED. ROAD DIST. NO. 1 (ILLINOIS) FED. AID PROJECT				