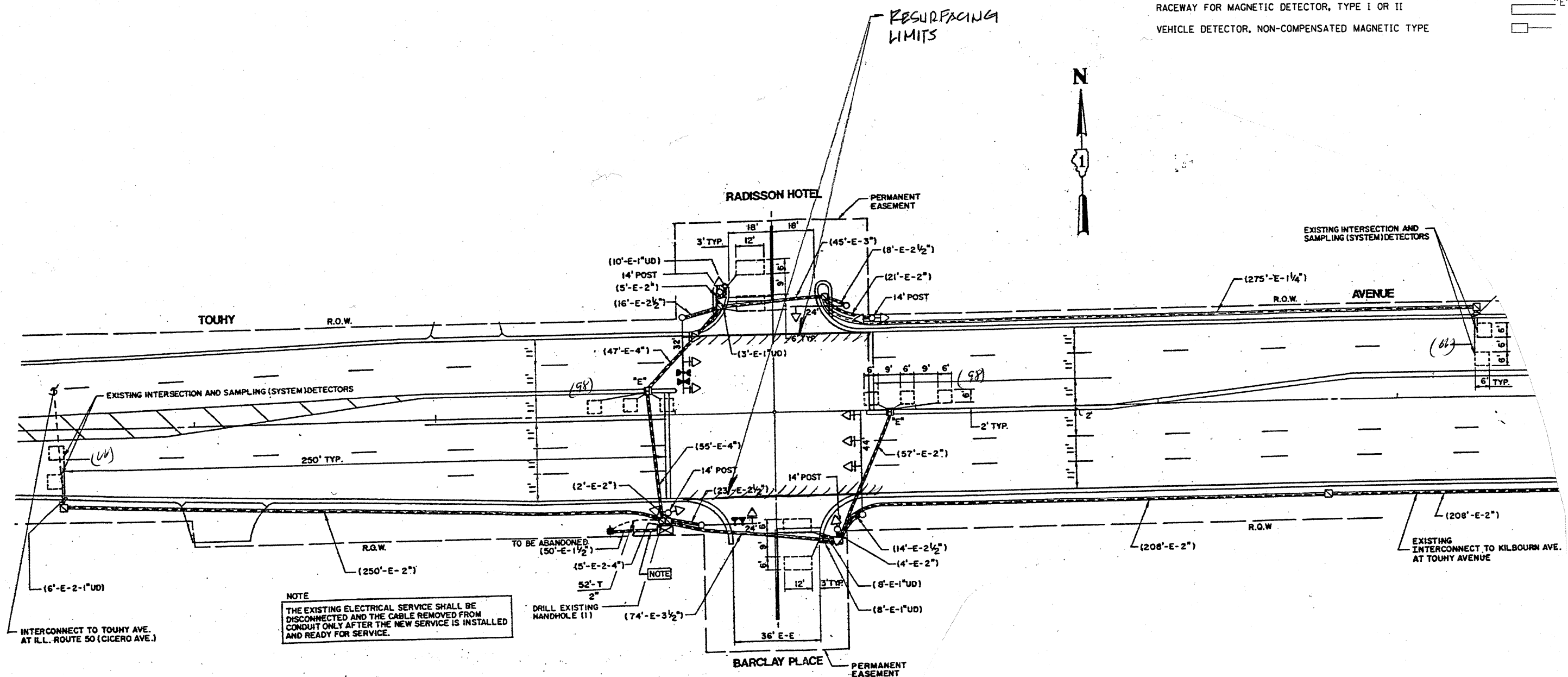


TRAFFIC SIGNAL LEGEND

	PROPOSED	EXISTING
DETECTOR LOOP		
SIGNAL HEAD		
G.S. CONDUIT IN TRENCH OR PUSHED		
SIGNAL HEAD WITH BACKPLATE		
RACEWAY FOR MAGNETIC DETECTOR, TYPE I OR II		
VEHICLE DETECTOR, NON-COMPENSATED MAGNETIC TYPE		



NOTE
 THE EXISTING ELECTRICAL SERVICE SHALL BE DISCONNECTED AND THE CABLE REMOVED FROM CONDUIT ONLY AFTER THE NEW SERVICE IS INSTALLED AND READY FOR SERVICE.

THIS PLAN IS FOR THE SOLE PURPOSE OF DETECTOR LOOP REPLACEMENTS ONLY

REPLACE ALL DETECTOR LOOPS AS SHOWN (WITHIN THE RESURFACING LIMITS)

CODE	QUANTITY	UNIT	ITEM
86600600	328	FOOT	DETECTOR LOOP, REPLACEMENT

FILE NAME =	USER NAME = konthaphixaybc	DESIGNED - BCK	REVISED -
CONTRACT WORK \PW\DOT\KANTHAPHIXAYBC\01126	TRAFFIC.Legend.v7.dgn	DRAWN - BCK	REVISED -
	PLOT SCALE = 3/8" = 1' IN.	CHECKED - DAD	REVISED -
	PLOT DATE = 4/3/2009	DATE -	REVISED -

**STATE OF ILLINOIS
 DEPARTMENT OF TRANSPORTATION**

**DISTRICT ONE - DETECTOR LOOP REPLACEMENT
 TOUHY AVE. @ BARCLAY PL.**

SCALE: NONE SHEET NO. OF SHEETS STA. TO STA.

F.A.U. RTE.	SECTION	COUNTY	TOTAL SHEETS	SHEET NO.
1340	2009-063 RS	COOK	21	8
FED. ROAD DIST. NO.			ILLINOIS FED. AID PROJECT	
			CONTRACT NO. 60466	