

F.A.U. RTE.	SECTION	COUNTY	TOTAL SHEETS	SHEET NO.
1340	2009-063 RS	COOK	21	1
FED. ROAD DIST. NO.	ILLINOIS	CONTRACT NO. 60H66		

STATE OF ILLINOIS  
DEPARTMENT OF TRANSPORTATION  
DIVISION OF HIGHWAYS

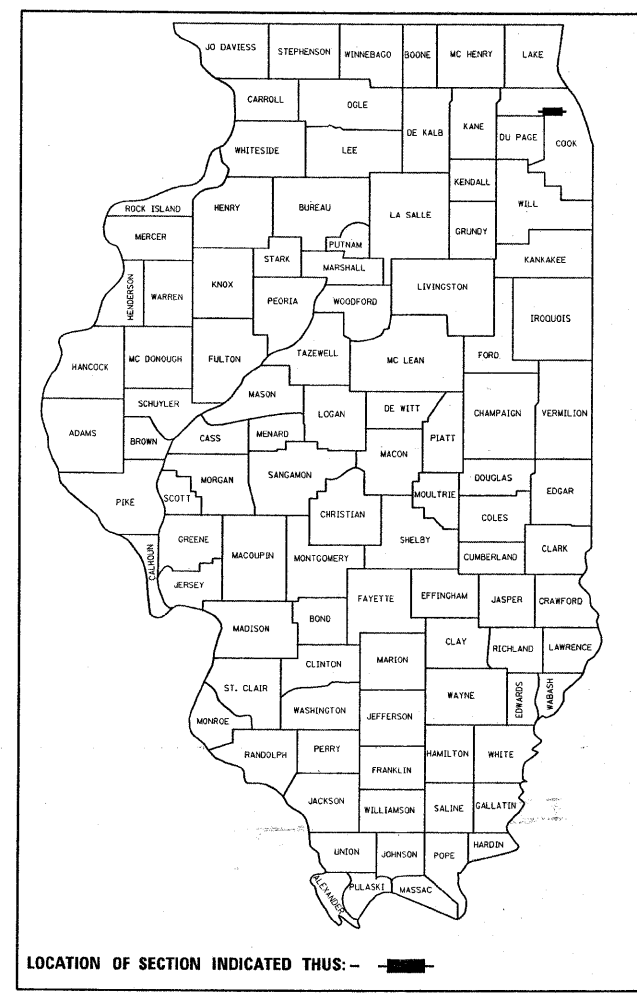
**PROPOSED  
HIGHWAY PLANS**

FAU 1340 (TOUHY AVE.)  
LOC 1: ILL 50 (CICERO AVE.) TO US 41 (LINCOLN AVE.)  
LOC 2: LAWNSDALE AVE. TO KIMBALL AVE.  
SECTION: 2009-063 RS  
RESURFACING  
PROJECT: ESP-1340(009)  
COOK COUNTY  
C-91-764-09

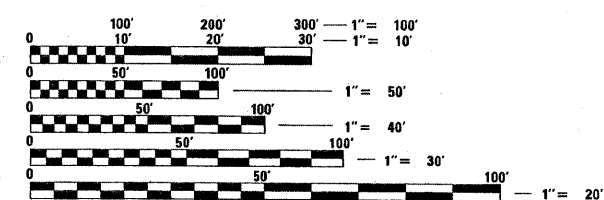
FOR INDEX OF SHEETS, SEE SHEET NO. 2

THE PROJECT IS LOCATED IN THE VILLAGES OF LINCOLNWOOD & SKOKIE

D -91-764-09



LOCATION OF SECTION INDICATED THIS: - [black rectangle] -

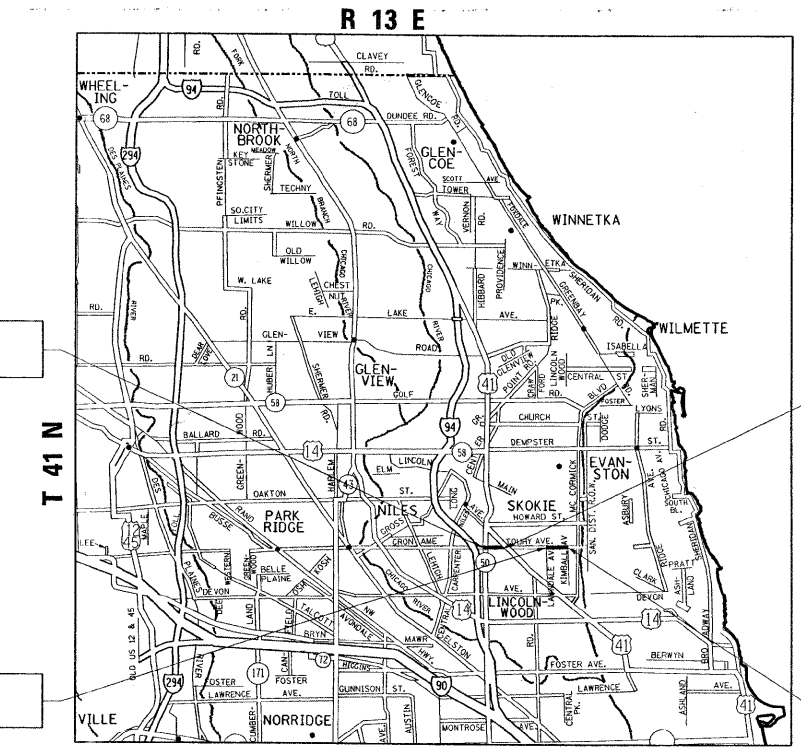


FULL SIZE PLANS HAVE BEEN PREPARED USING STANDARD ENGINEERING SCALES. REDUCED SIZED PLANS WILL NOT CONFORM TO STANDARD SCALES. IN MAKING MEASUREMENTS ON REDUCED PLANS, THE ABOVE SCALES MAY BE USED.

J.U.L.I.E.  
JOINT UTILITY LOCATION INFORMATION FOR EXCAVATION  
1-800-892-0123  
OR 811

PROJECT ENGINEER DAN WILGREEN (847) 705-4240  
PROJECT MANAGER KEN ENG (847) 705-4247

CONTRACT NO. 60H66



LOCATION 1  
PROJECT BEGINS  
STA. 0+40

LOCATION 2  
PROJECT BEGINS  
STA. 1+30

**TRAFFIC DATA**  
2006 ADT = 43,100 (LOC. 1)  
2006 ADT = 33,200 (LOC. 2)  
POSTED SPEED LIMIT = 35 MPH

LOCATION 1  
PROJECT ENDS  
STA. 24+20

LOCATION 2  
PROJECT ENDS  
STA. 19+78

GROSS & NET LENGTH OF PROJECT = 2,380 LINEAL FEET = 0.45 MILE (LOCATION 1)  
GROSS & NET LENGTH OF PROJECT = 1,848 LINEAL FEET = 0.35 MILE (LOCATION 2)

STATE OF ILLINOIS  
DEPARTMENT OF TRANSPORTATION  
DIVISION OF HIGHWAYS

SUBMITTED June 30, 2009

*Diana M. O'Keefe*  
DEPUTY DIRECTOR OF HIGHWAYS, REGION ENGINEER  
August 14, 2009

*Charles G. Ingersoll*  
ENGINEER OF DESIGN AND ENVIRONMENT

August 14, 2009

*Christine M. Reed*  
DIRECTOR OF HIGHWAYS, CHIEF ENGINEER

**PRINTED BY THE AUTHORITY  
OF THE STATE OF ILLINOIS**