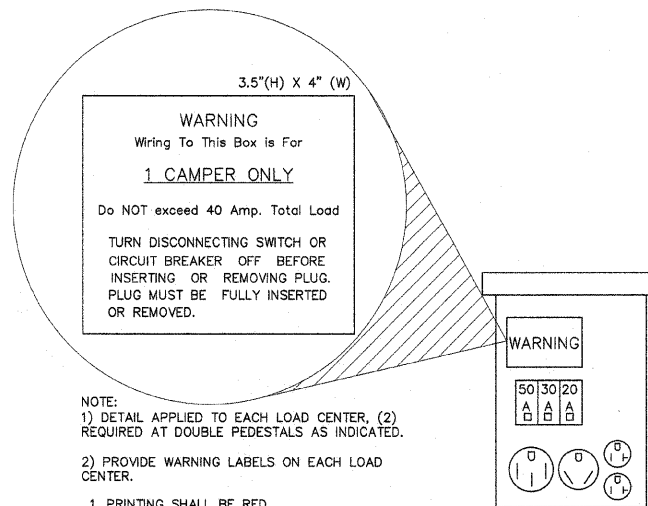


- NOTES**
- SAND OR OTHER GRANULAR MATERIAL SHALL SURROUND ALL WIRES.
 - WIRE PLOW OR DIRECTIONAL BORE ARE ACCEPTABLE ALTERNATES TO TRENCHING, WHERE ONLY FINE GRAIN SOIL WILL BE ENCOUNTERED.

1
16
TYPICAL WIRE TRENCH DETAIL
NO SCALE

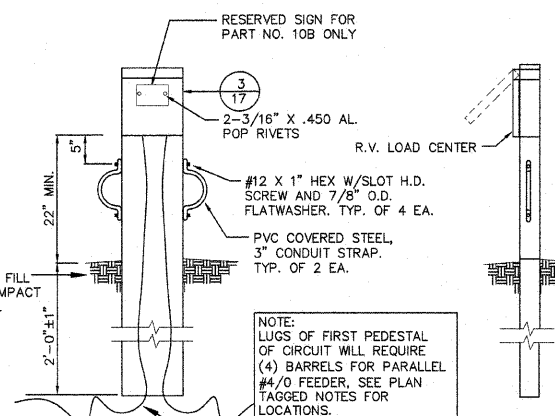


- NOTE:**
- DETAIL APPLIED TO EACH LOAD CENTER, (2) REQUIRED AT DOUBLE PEDESTALS AS INDICATED.
 - PROVIDE WARNING LABELS ON EACH LOAD CENTER.

- PRINTING SHALL BE RED.
- LABEL MATERIAL SHALL BE WHITE SCOTCH LITE REFLECTIVE SHEETING. (3M #3290 OR EQUIVALENT)
- AFTER PRINTING, COAT WITH 3M #730 OR EQUIVALENT CLEAR COATING.

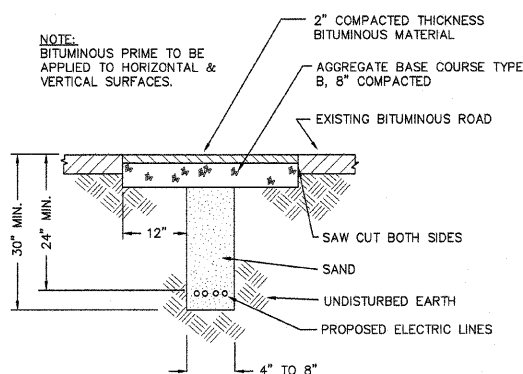
TO BE PROVIDED WITH:
1-20A.(125V.), 1-30A.(125V.)
& 1-50A.(125/250V.) RECEPTACLES

3
16
TYPICAL LOAD CENTER CONFIGURATION
NO SCALE



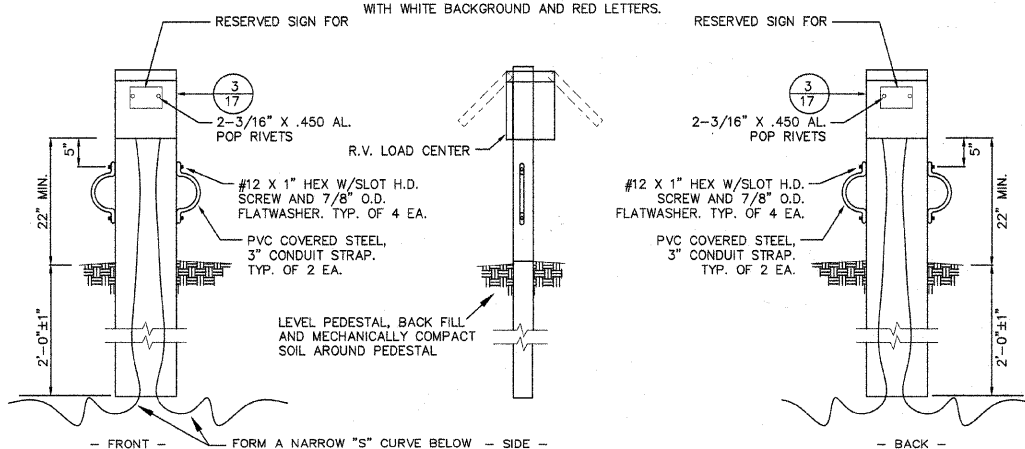
NOTE:
NEW SINGLE RV LOAD CENTER TYPE PEDESTAL WITH 20 AMP., 30 AMP. AND 50 AMP. RECEPTACLES IN A NEMA 3R ENCLOSURE SUPPORTED BY MANUFACTURED PEDESTAL. ALL 20 AMP. AND 30 AMP. RECEPTACLES TO BE 125V, 2P, 3W GROUNDED TYPE. 50 AMP. RECEPTACLES TO BE 125/250V, 3P, 4W GROUNDED TYPE. RESERVED SIGN SHALL BE 5" X 7" X 0.090" ALUM. PLATE, WITH WHITE BACKGROUND AND RED LETTERS.

4
16
SINGLE SITE LOAD CENTER PEDESTAL DETAIL
NO SCALE

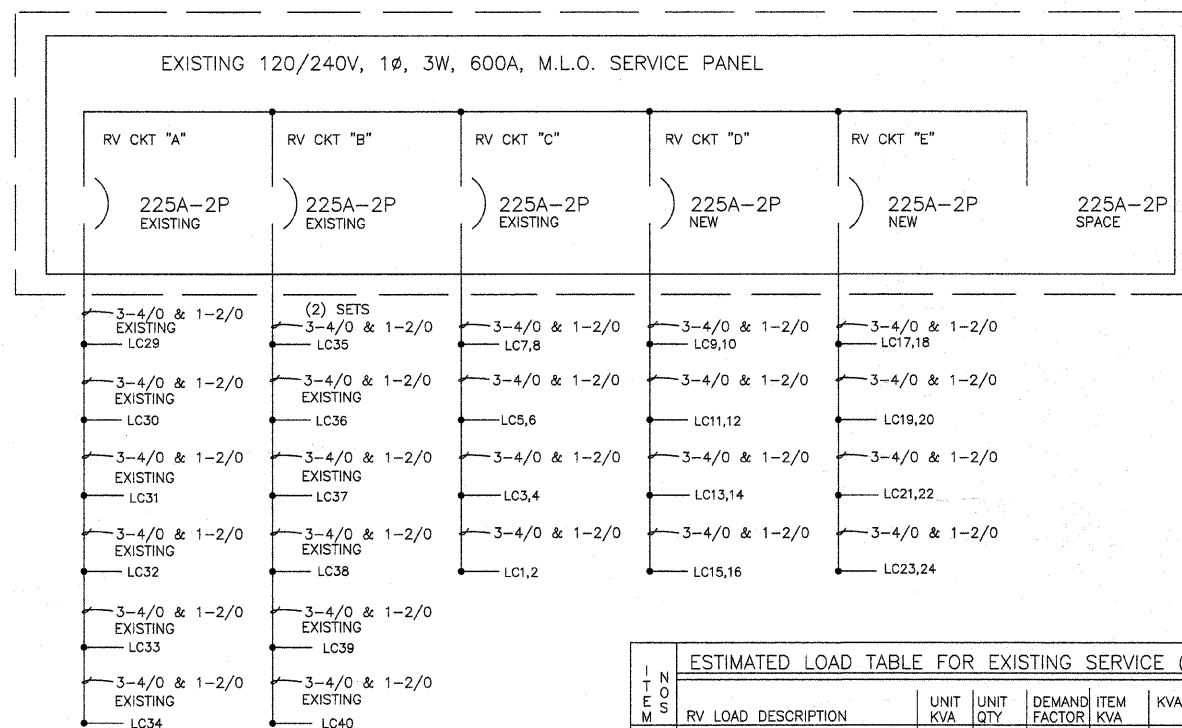


2
16
BITUMINOUS SURFACE ROAD CROSSING
NO SCALE

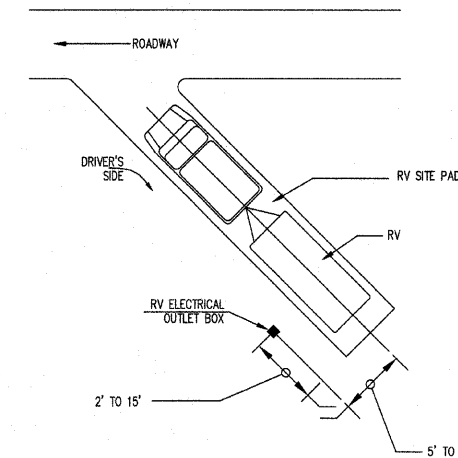
NOTE:
NEW DOUBLE RV LOAD CENTER TYPE PEDESTAL WITH 20 AMP., 30 AMP. AND 50 AMP. RECEPTACLES IN A NEMA 3R ENCLOSURE SUPPORTED BY MANUFACTURED PEDESTAL. ALL 20 AMP. AND 30 AMP. RECEPTACLES TO BE 125V, 2P, 3W GROUNDED TYPE. 50 AMP. RECEPTACLES TO BE 125/250V, 3P, 4W GROUNDED TYPE. RESERVED SIGN SHALL BE 5" X 7" X 0.090" ALUM. PLATE, WITH WHITE BACKGROUND AND RED LETTERS.



5
16
DOUBLE SITE LOAD CENTER PEDESTAL DETAIL
NO SCALE



RISER DIAGRAM
NO SCALE



TYPICAL RV LC LOCATION DETAIL
NO SCALE

ESTIMATED LOAD TABLE FOR EXISTING SERVICE (1Ø, 120/240V)

ITEM NO.	RV LOAD DESCRIPTION	UNIT KVA	UNIT QTY	DEMAND FACTOR	ITEM KVA	KVA/.240 A	ITEM PROTECTION
1	CIRCUIT "A"	9600	6	60%	34560	144	225
2	CIRCUIT "B"	9600	6	60%	34560	144	225
3	CIRCUIT "C"	9600	8	55%	42240	176	225
4	CIRCUIT "D"	9600	8	55%	42240	176	225
5	CIRCUIT "E"	9600	8	55%	42240	176	225
EXISTING SERVICE LOAD			36	41%	141696	590.4	

FILE NAME =	USER NAME = \$USER\$	DESIGNED =	REVISED = 7/8/09
\$FILE\$		DRAWN = D.M.U.	REVISED = 8/24/09
	PLOT SCALE = \$SCALE\$	CHECKED =	REVISED =
	PLOT DATE = \$DATE\$	DATE = 3/10/08	REVISED =

STATE OF ILLINOIS
DEPARTMENT OF TRANSPORTATION

PIERRE MENARD HOME/
KASKASKIA STATE PARK CAMPGROUND

SCALE: 1"=20' SHEET NO. 16 OF 16 SHEETS STA. _____ TO STA. _____

F.A. RTE.	SECTION	COUNTY	TOTAL SHEETS	SHEET NO.
		RANDOLPH	16	16
CONTRACT NO. 46003				
FED. ROAD DIST. NO. - ILLINOIS FED. AID PROJECT				