

INDEX OF SHEETS

- 1 COVER SHEET
- 2 HIGHWAY STANDARDS, GENERAL NOTES, AND COMMITMENTS
- 3 SUMMARY OF QUANTITIES
- 4-7 SCHEDULE OF QUANTITIES
- 8-9 LOCATION MAPS

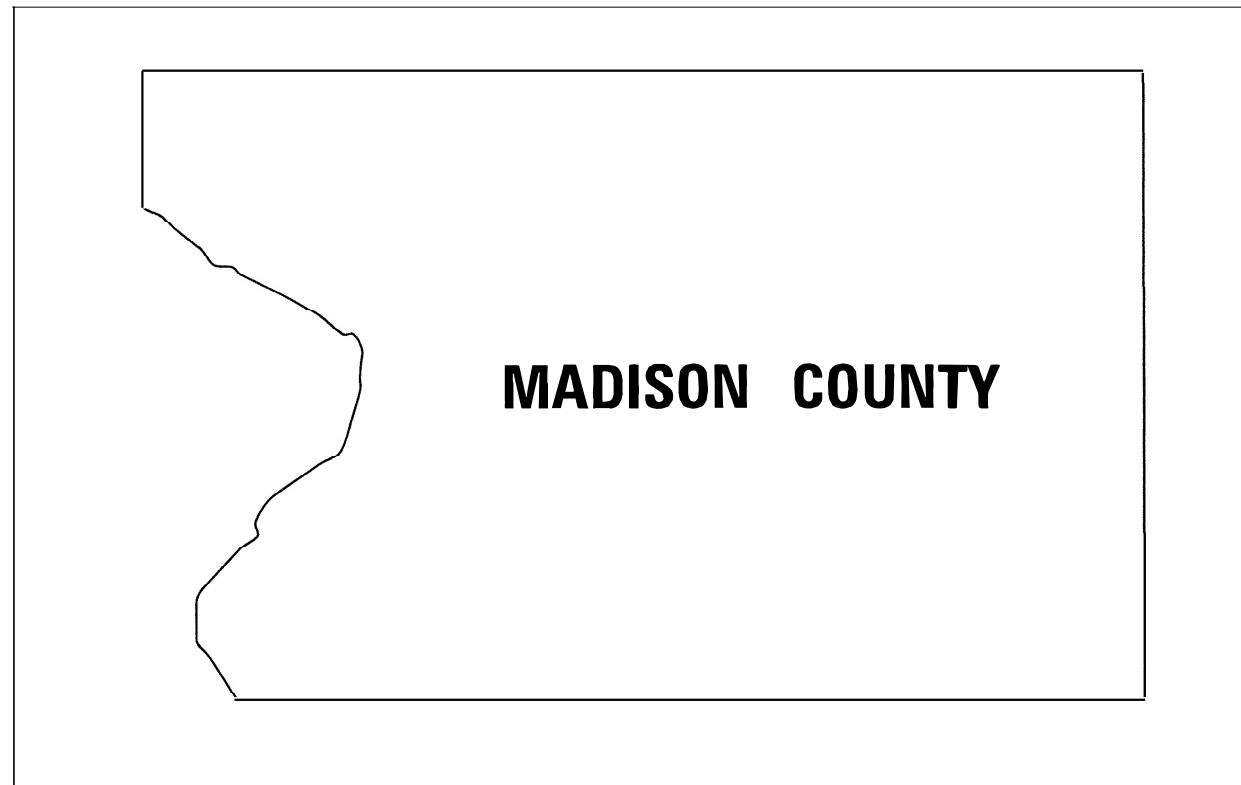
FOR LIST OF HIGHWAY STANDARDS, SEE SHEET NO.2

STATE OF ILLINOIS
DEPARTMENT OF TRANSPORTATION

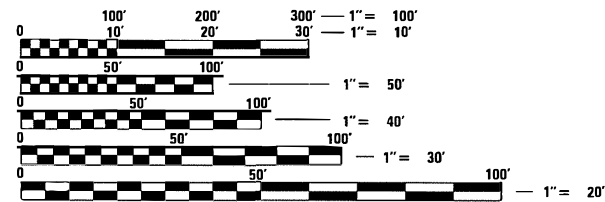
PROPOSED
HIGHWAY PLANS

VARIOUS ROUTES
SECTION VARIOUS DIST 8 MRK 2022-2
PROJECT HSIP-7LXA(741)
PAVEMENT MARKING
MADISON COUNTY

C-98-113-21



NOT TO SCALE



FULL SIZE PLANS HAVE BEEN PREPARED USING STANDARD ENGINEERING SCALES. REDUCED SIZED PLANS WILL NOT CONFORM TO STANDARD SCALES. IN MAKING MEASUREMENTS ON REDUCED PLANS, THE ABOVE SCALES MAY BE USED.

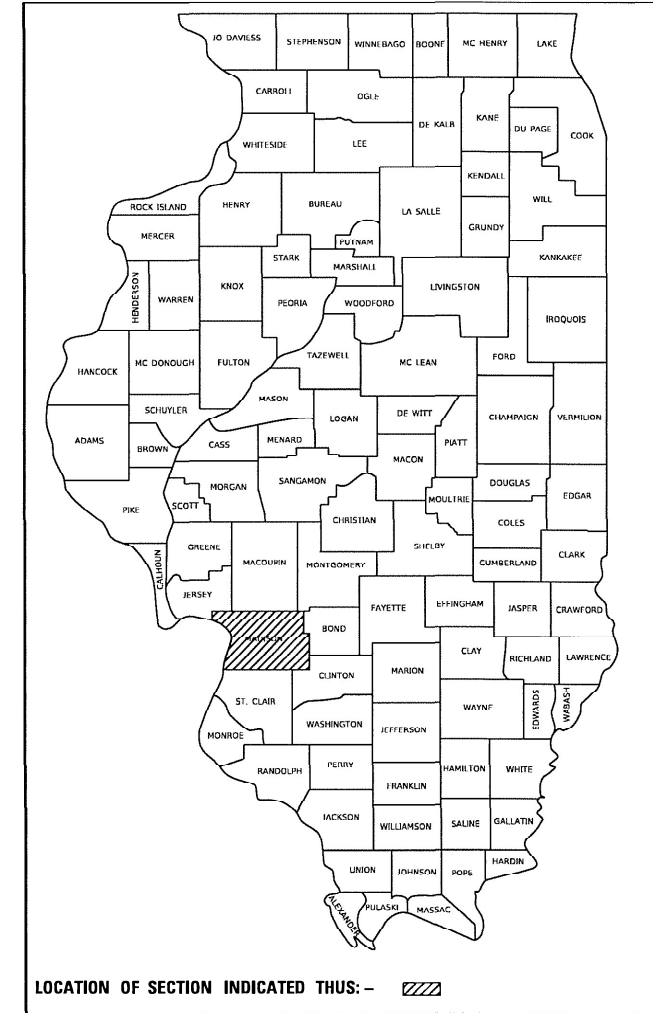
J.U.L.I.E.
 JOINT UTILITY LOCATION INFORMATION FOR EXCAVATORS
 1-800-892-0123
 OR 811

PROJECT ENGINEER: BILLIE OWEN (618) 346-3209
 PROJECT MANAGER: PHIL FREIMUTH (618) 346-3194

CONTRACT NO. 76P76

F.A. RTE.	SECTION	COUNTY	TOTAL SHEETS	SHEET NO.
VAR. VAR. DIST.8 MRK 2022-2	MADISON	9	1	
ILLINOIS		CONTRACT NO. 76P76		

D-98-083-21



STATE OF ILLINOIS
 DEPARTMENT OF TRANSPORTATION

SUBMITTED June 21, 2021
Kath Kolst
 REGIONAL ENGINEER

August 13, 2021
Scott A. Elk
 ENGINEER OF DESIGN AND ENVIRONMENT

August 13, 2021
James J. Quinn
 DIRECTOR OF HIGHWAYS PROJECT IMPLEMENTATION

PRINTED BY THE AUTHORITY
OF THE STATE OF ILLINOIS

HIGHWAY STANDARDS

000001-08	STANDARD SYMBOLS, ABBREVIATIONS AND PATTERNS
701301-04	LANE CLOSURE, 2L, 2W, SHORT TIME OPERATIONS
701311-03	LANE CLOSURE 2L, 2W MOVING OPERATIONS - DAY ONLY
701701-10	URBAN LANE CLOSURE MULTILANE INTERSECTION
701901-08	TRAFFIC CONTROL DEVICES
780001-05	TYPICAL PAVEMENT MARKINGS
001006	DECIMAL OF AN INCH AND OF A FOOT

GENERAL NOTES

1. THE CONTRACTOR SHALL BE RESPONSIBLE FOR FIELD VERIFICATION OF ALL PAVEMENT MARKINGS WITHIN EACH LOCATION. THIS INCLUDES THE BEGINNING AND ENDING LIMITS OF ALL NO PASSING ZONES.
2. THE PROPOSED PAVEMENT MARKING SHALL MATCH THE LOCATION OF EXISTING PAVEMENT MARKING, AS DIRECTED BY THE ENGINEER
3. NO MATERIAL SHALL BE LEFT ON OR NEAR THE ROADWAY DURING NON-WORKING HOURS.
4. NO OVERNIGHT LANE CLOSURES WILL BE ALLOWED.
5. SHORT TERM PAVEMENT MARKING HAS BEEN INCLUDED IN THE PLANS TO ADDRESS ANY TEMPORARY PAVEMENT MARKING REQUIREMENTS.
6. AT GRADE RAILROAD CROSSINGS SHALL BE OMITTED. PAVEMENT MARKING IMPROVEMENTS SHALL STOP 25 FEET EITHER SIDE OF THE TRACKS.
7. THE DEPARTMENT STRONGLY ENCOURAGES THE PRIME CONTRACTOR AND THEIR APPROVED SUB-CONTRACTORS TO HIRE MINORITY, WOMEN AND DISADVANTAGED INDIVIDUALS FROM ITS FEDERALLY FUNDED HIGHWAY CONSTRUCTION CAREERS TRAINING PROGRAM (HCCTP) TO HELP MEET WORKFORCE AND TRAINEE GOALS. THIS PROGRAM IS TRAINING MINORITIES, WOMEN AND DISADVANTAGED INDIVIDUALS IN HIGHWAY CONSTRUCTION-RELATED SKILLS, E.G., MATH FOR THE TRADES, JOB READINESS, TECHNICAL SKILLS COURSEWORK (CARPENTRY, CONCRETE FLATWORK, BLUEPRINT READING, SITE PLANS, SITE WORK, TOOLS USE, ETC.) AND OSHA 10 HOUR CERTIFICATION, TO PREPARE THEM FOR A CAREER IN THE HIGHWAY CONSTRUCTION TRADES. GRADUATES ARE WELL-TRAINED AND READY TO BECOME PRODUCTIVE ENTRY-LEVEL CONSTRUCTION WORKERS. CONTACT THE DISTRICT 8 EEO OFFICE AT 618-346-3360 AND/OR THE HCCTP COORDINATOR AT 618-874-6528 TO LEARN MORE ABOUT THE PROGRAM AND FOR ASSISTANCE IN MEETING WORKFORCE AND TRAINEE GOALS.

COMMITMENTS

NONE

REV. - MS

MODEL: Default
 FILE: Mark11.plt
 C:\ProgramData\Autodesk\LT2021\Documents\DOT\Office\District 8\Project\087676\CADDData\CAD\sheet\087676-ht-plan.dgn

USER NAME = Simam	DESIGNED -	REVISED -	STATE OF ILLINOIS DEPARTMENT OF TRANSPORTATION	HIGHWAY STANDARDS, GENERAL NOTES, & COMMITMENTS	F.A. RTE.	SECTION	COUNTY	TOTAL SHEETS	SHEET NO.	
	DRAWN -	REVISED -			VAR	VAR DIS 8 MRK 2022-2	MADISON	9	2	
PLOT SCALE = 100.0000' / in.	CHECKED -	REVISED -			CONTRACT NO. 76P76					
PLOT DATE = 6/21/2021	DATE -	REVISED -			SCALE:	SHEET 1	OF 1	SHEETS	STA.	TO STA.

90% FED
10% STATE

CODE NO.	ITEM	UNIT	TOTAL QUANTITY	CONSTRUCTION CODE	
				PAVEMENT MARKING	PAVEMENT MARKING
				0021 RURAL	0021 URBAN
67100100	MOBILIZATION	L SUM	1	0.5	0.5
70102635	TRAFFIC CONTROL AND PROTECTION, STANDARD 701701	L SUM	1		1
70300100	SHORT TERM PAVEMENT MARKING	FOOT	10614	3984	6630
70300150	SHORT TERM PAVEMENT MARKING REMOVAL	SQ FT	3538	1328	2210
78000100	THERMOPLASTIC PAVEMENT MARKING - LETTERS AND SYMBOLS	SQ FT	1225	93	1132
78000300	THERMOPLASTIC PAVEMENT MARKING - LINE 5"	FOOT	174283	21805	152478
78000400	THERMOPLASTIC PAVEMENT MARKING - LINE 6"	FOOT	190770	98737	92033
78000600	THERMOPLASTIC PAVEMENT MARKING - LINE 12"	FOOT	2369	624	1745
78000650	THERMOPLASTIC PAVEMENT MARKING - LINE 24"	FOOT	492	12	480
78009006	MODIFIED URETHANE PAVEMENT MARKING - LINE 6"	FOOT	2732	2376	356
78300202	PAVEMENT MARKING REMOVAL - WATER BLASTING	SQ FT	127326	41714	85612

MODEL: Default
FILE NAME: p:\p12120201\Documents\DOT - Office\District B\Project\DOT\67676\CAD\data\CAD\res\DOT67676-rt-plan.dgn

REV. - MS

USER NAME = Simam	DESIGNED -	REVISED -
	DRAWN -	REVISED -
PLOT SCALE = 100.0000' / in.	CHECKED -	REVISED +
PLOT DATE = 6/16/2021	DATE -	REVISED +

**STATE OF ILLINOIS
DEPARTMENT OF TRANSPORTATION**

SUMMARY OF QUANTITIES

SCALE: SHEET 1 OF 1 SHEETS STA. TO STA.

F.A. RTE.	SECTION	COUNTY	TOTAL SHEETS	SHEET NO.
VAR	VAR DIS 8 MRK 2022-2	MADISON	9	3
			CONTRACT NO. 76P76	
ILLINOIS FED. AID PROJECT				

MADISON COUNTY PAVEMENT MARKING SCHEDULE

LOCATION			THERMOPLASTIC PAVEMENT MARKING									MODIFIED URETHANE PAVEMENT MARKING			PAVEMENT MARKING REMOVAL - WATER BLASTING	SHORT TERM PAVEMENT MARKING	SHORT TERM PAVEMENT MARKING REMOVAL
			LINE 6"			LINE 5"			LINE 12"	LINE 24"	LETTERS AND SYMBOLS	LINE 6"					
			SOLID WHITE	SOLID YELLOW	SKIP-DASH YELLOW/WHITE	SOLID WHITE	SOLID YELLOW	SKIP-DASH YELLOW/WHITE	YELLOW	WHITE	THROUGH/ LEFT/ RIGHT ARROW	SOLID WHITE	SOLID YELLOW	SKIP-DASH YELLOW			
MS	TO	MS	FOOT	FOOT	FOOT	FOOT	FOOT	FOOT	FOOT	SQ FT	FOOT	FOOT	FOOT	SQ FT	FOOT	SQ FT	
IL-140 #2																	
0.00	TO	2.25	23760	1609.6	2970									9473.2	1080	360.0	
IL-162 #3																	
0.00	TO	0.11				1162	2323	145		52				1314.0	53	17.6	
0.11	TO	0.31				2112	1056	264						1144.0	96	32.0	
0.31	TO	0.43				1267	1901	158		96	62.4			1363.1	58	19.2	
0.43	TO	0.51				1267	845	106						739.3	38	12.8	
0.51	TO	0.62				739	739	92	24		61			608.3	53	17.6	
0.62	TO	0.64							RAILROAD OMISSION								
0.64	TO	1.04				3802	1901	475	24	36	61			2216.3	193	64.5	
1.04	TO	1.47				4541		568						1703.0	206	68.8	
1.47	TO	1.59				1267	634	158						686.3	58	19.2	
1.59	TO	1.69				1056	1056							704.0	48	16.0	
1.69	TO	1.75				1267				48	94			611.9	29	9.6	
1.75	TO	1.82				1109	1478				47			909.1	34	11.2	
1.82	TO	1.89				739	1478		160					899.0	34	11.2	
1.89	TO	1.94				528	264							264.0	24	8.0	
1.94	TO	1.95				106			118					153.3	5	1.6	
1.95	TO	2.10				1584	792							792.0	72	24.0	
1.94	TO	2.46				5491	5491	686						3889.3	250	83.2	
2.46	TO	3.02				5914		739						2217.7	269	89.6	
3.02	TO	3.13				1162	581	145						629.3	53	17.6	
3.13	TO	3.21				1267	1690	106	160	24				1229.0	38	12.8	
3.21	TO	3.23												0.0	10	3.2	
3.23	TO	3.30				1109	1478		160	36				1094.3	34	11.2	
3.30	TO	3.38				845	422	106						457.7	38	12.8	
3.38	TO	4.66	13517		1690									5068.8	614	204.8	
4.66	TO	4.86	2112	4224	264				260					2460.0	96	32.0	
4.86	TO	4.87												0.0	5	1.6	
4.87	TO	4.91	634	422							31			383.2	19	6.4	
4.91	TO	5.00	950	950										633.6	43	14.4	
5.00	TO	5.01												0.0	5	1.6	
5.01	TO	5.06	792	528							47			486.8	24	8.0	
5.06	TO	5.27	2218	2218										1478.4	101	33.6	
5.27	TO	5.28												0.0	5	1.6	
5.28	TO	5.32	634	422							46.8			398.8	19	6.4	
5.32	TO	5.92	6336	6336	792				60					4548.0	280	96.0	
5.92	TO	5.95	317											224.4	14	4.8	
5.95	TO	7.10	12144	6072	1518						46.8	317	40	6624.8	552	184.0	
7.10	TO	7.16	634	1267										633.6	29	9.6	
7.16	TO	7.21	792	528										440.0	24	8.0	
SUB TOTAL (IL 140 RURAL)			23760	1690	2970	0	0	0	0	0	0	0	0	9473	1080	360	
SUB TOTAL (IL 162 URBAN)			41078	22968	4264	38334	24129	3748	966	292	496	317	0	40	47006	3529	1176

MODEL: Default
 FILE NAME: p:\mhammon.dwg
 PROJECT: 087676\CADD\DATA\CAD\FRONT\DOT\Office\District 8\Projects\087676\CADD\DATA\CAD\FRONT\DOT\Office\District 8\Projects\087676\p-h-eh-ah.dwg

USER NAME = Slimam	DESIGNED -	REVISED -
	DRAWN -	REVISED -
PLOT SCALE = 100,0000' / in.	CHECKED -	REVISED -
PLOT DATE = 6/16/2021	DATE -	REVISED -

STATE OF ILLINOIS
DEPARTMENT OF TRANSPORTATION

SCHEDULE OF QUANTITIES			
SCALE:	SHEET 2	OF 4 SHEETS	STA. TO STA.

F.A. RTE.	SECTION	COUNTY	TOTAL SHEETS	SHEET NO.
VAR	VAR DIS 8 MRK 2022-2	MADISON	9	5
CONTRACT NO. 76P76				
ILLINOIS FED. AID PROJECT				

MADISON COUNTY PAVEMENT MARKING SCHEDULE

LOCATION			THERMOPLASTIC PAVEMENT MARKING									MODIFIED URETHANE PAVEMENT MARKING			PAVEMENT MARKING REMOVAL - WATER BLASTING	SHORT TERM PAVEMENT MARKING	SHORT TERM PAVEMENT MARKING REMOVAL
			LINE 6"			LINE 5"			LINE 12"	LINE 24"	LETTERS AND SYMBOLS	LINE 6"					
			SOLID WHITE	SOLID YELLOW	SKIP-DASH YELLOW/WHITE	SOLID WHITE	SOLID YELLOW	SKIP-DASH YELLOW/WHITE	YELLOW	WHITE	RAILROAD/THROUGH/LEFT/ RIGHT ARROW	SOLID WHITE	SOLID YELLOW	SKIP DASH YELLOW			
MS	TO	MS	FOOT	FOOT	FOOT	FOOT	FOOT	FOOT	FOOT	SQ FT	FOOT	FOOT	FOOT	SQ FT	FOOT	SQ FT	
MISSOURI AVE. #4																	
0.00	TO	0.13				1373	172	172		36	62			706.4	62	20.8	
0.13	TO	0.22				950	950							633.6	43	14.4	
0.22	TO	0.33				1162	2573			12	31.2			1300.1	53	17.6	
0.33	TO	0.35				211								70.4	10	3.2	
0.35	TO	0.57				2323	4896		24	12	92			2546.7	106	35.2	
0.57	TO	0.58															
0.58	TO	0.71				1373	686	172	24	24	61			876.6	62	20.8	
0.71	TO	1.00				3062		383						1148.4	139	46.4	
1.00	TO	1.10				1056	528	132		24	61			681.0	48	16.0	
1.10	TO	1.13															
1.13	TO	1.24				2323	1162	145	24	12	61			1319.0	53	17.6	
1.24	TO	1.28				634	422	53						369.6	19	6.4	
1.28	TO	1.36				845	845	106						598.4	38	12.8	
1.36	TO	1.51				1584	1584							1056.0	72	24.0	
1.51	TO	1.59				845	422	106						457.6	38	12.8	
1.59	TO	1.70				1162	1162	145						822.8	53	17.6	
1.70	TO	1.80				1056	1056	132						748.0	48	16.0	
1.80	TO	1.96				2534	1690		200	24				1656.0	77	25.6	
SUB TOTAL						22493	18148	1544	272	144	369			14991	922	307	
ST. THOMAS RD. #5																	
0.00	TO	0.75				7920		990		40				3050.0	360	120.0	
0.75	TO	0.78				733	317		24		61			434.9	14	4.8	
0.78	TO	0.79				106	53	13						57.2	5	1.6	
0.79	TO	0.86				739	739		24		61			577.8	34	11.2	
0.86	TO	2.08				12883		1610						4831.2	586	195.2	
2.08	TO	2.09				53	106			24				100.8	5	1.6	
SUB TOTAL			0	0	0	22434	1214	2614	48		122	0	0	9052	1003	334	
W CHAIN OF ROCKS RD #6																	
0.00	TO	0.07				739	739			12	31			548.0	34	11.2	
0.07	TO	0.77				7392		924						2772.0	336	112.0	
0.77	TO	1.06				3062	3062							2041.6	139	46.4	
1.06	TO	1.22				1690		211						633.6	77	25.6	
SUB TOTAL			0	0	0	12883	3802	1135	0		31	0	0	5995	586	195	

MODEL: Default
 FILE NAME: p:\pub\mcom.dwt\illinois\gov\PWIDOT\Documents\DOT - Office\District 8\Projects\087676\CAD\Drawings\087676\7676-01b.dgn

USER NAME = Slimam	DESIGNED -	REVISED -
	DRAWN -	REVISED -
PLOT SCALE = 100,0000' / in.	CHECKED -	REVISED -
PLOT DATE = 6/16/2021	DATE -	REVISED -

**STATE OF ILLINOIS
DEPARTMENT OF TRANSPORTATION**

SCHEDULE OF QUANTITIES			
SCALE:	SHEET 2 OF 2 SHEETS	STA.	TO STA.

F.A. RTE.	SECTION	COUNTY	TOTAL SHEETS	SHEET NO.
VAR	DIS 8 MRK 2022-2	MADIOSN	9	6
CONTRACT NO. 76P76			ILLINOIS FED. AID PROJECT	

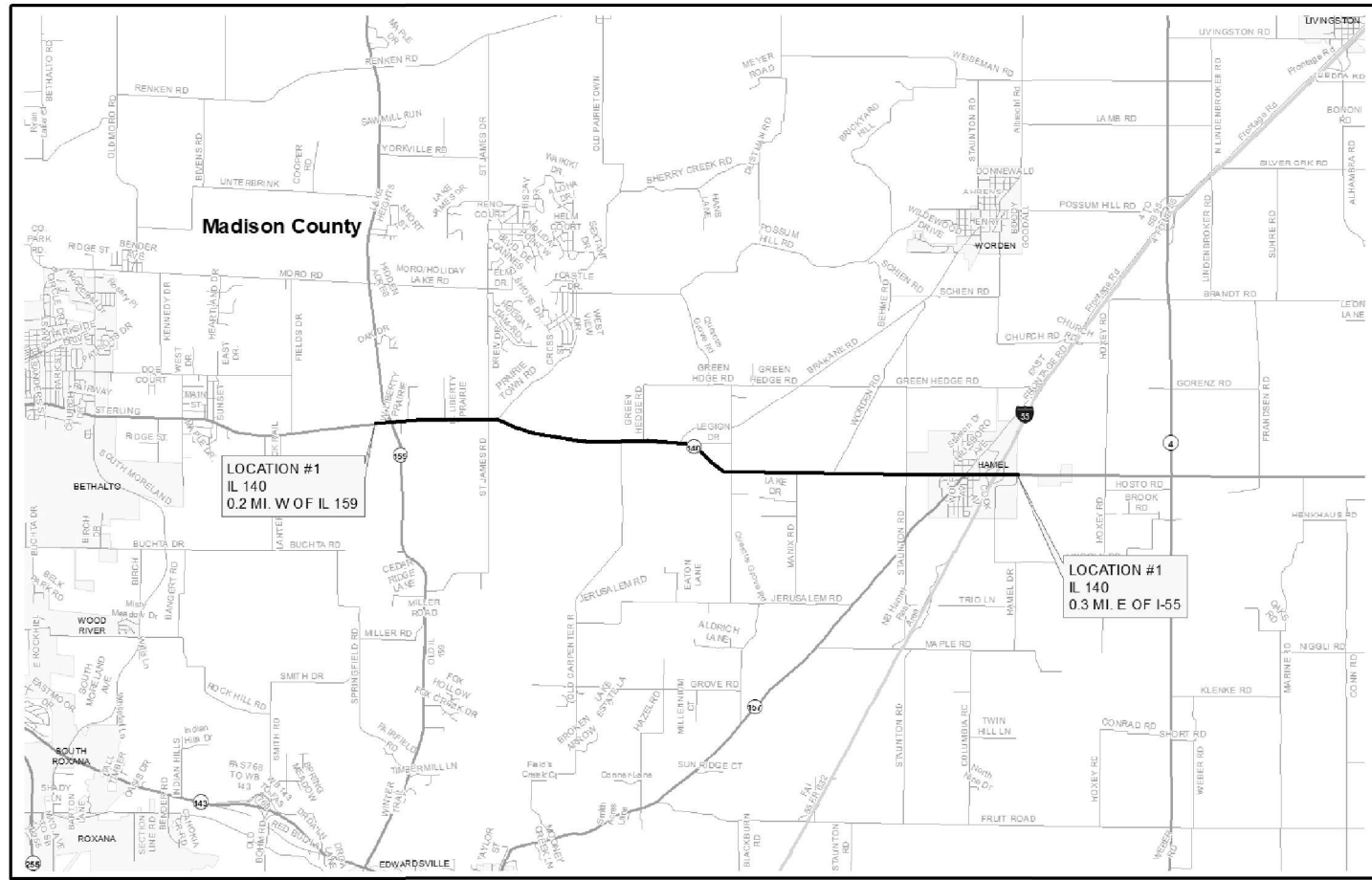
MADISON COUNTY PAVEMENT MARKING SCHEDULE

LOCATION	THERMOPLASTIC PAVEMENT MARKING											MODIFIED URETHANE PAVEMENT			PAVEMENT MARKING REMOVAL - WATER BLASTING	SHORT TERM PAVEMENT MARKING	SHORT TERM PAVEMENT MARKING REMOVAL	
	LINE 6"			LINE 5"			LINE 12"	LINE 24"	LETTERS AND SYMBOLS			LINE 6"						
	SOLID WHITE	SOLID YELLOW	SKIP-DASH YELLOW/WHITE	SOLID WHITE	SOLID YELLOW	SKIP-DASH YELLOW/WHITE	YELLOW	WHITE	THROUGH/ LEFT/ RIGHT ARROW	SOLID WHITE	SOLID YELLOW	SKIP-DASH YELLOW	SOLID WHITE	SOLID YELLOW				SKIP-DASH YELLOW
	FOOT	FOOT	FOOT	FOOT	FOOT	FOOT	FOOT	FOOT	SQ FT	FOOT	FOOT	FOOT	SQ FT	FOOT				SQ FT
IL-140 (IL-159 TO IL 157) #1	RURAL	47221	18155	4941	10579	9648	1577	624	12	93	1478	634	264	32240	2904	968		
	URBAN	12077	10826	820	0	0	0	459	44	114	0	0	0	8569	590	197		
IL-140 (OLIVE RD TO BCL) #2	RURAL	23760	1690	2970	0	0	0	0	0	0	0	0	0	9473	1080	360		
IL-162 (NAMEOKI RD TO IL 157) #3	URBAN	41078	22968	4264	38334	24129	3748	966	292	496	317	0	40	47006	3529	1176		
MISSOURI AVE. #4	URBAN	0	0	0	22493	18148	1544	272	144	369	0	0	0	14991	922	307		
ST. THOMAS RD. #5	URBAN	0	0	0	22434	1214	2614	48	0	122	0	0	0	9052	1003	334		
W CHAIN OF ROCKS RD #6	URBAN	0	0	0	12883	3802	1135	0	0	31	0	0	0	5995	586	195		
GRAND TOTAL RURAL		70981	19845	7911	10579	9648	1577	624	12	93	1478	634	264	41714	3984	1328		
GRAND TOTAL URBAN		53155	33794	5084	96144	47293	9041	1745	480	1132	317	0	40	85612	6630	2210		
		LINE 6" RURAL	98737	FOOT	LINE 5" RURAL	21805	FOOT				RURAL	2376	FOOT					
		LINE 6" URBAN	92033	FOOT	LINE 5" URBAN	152478	FOOT				URBAN	356	FOOT					

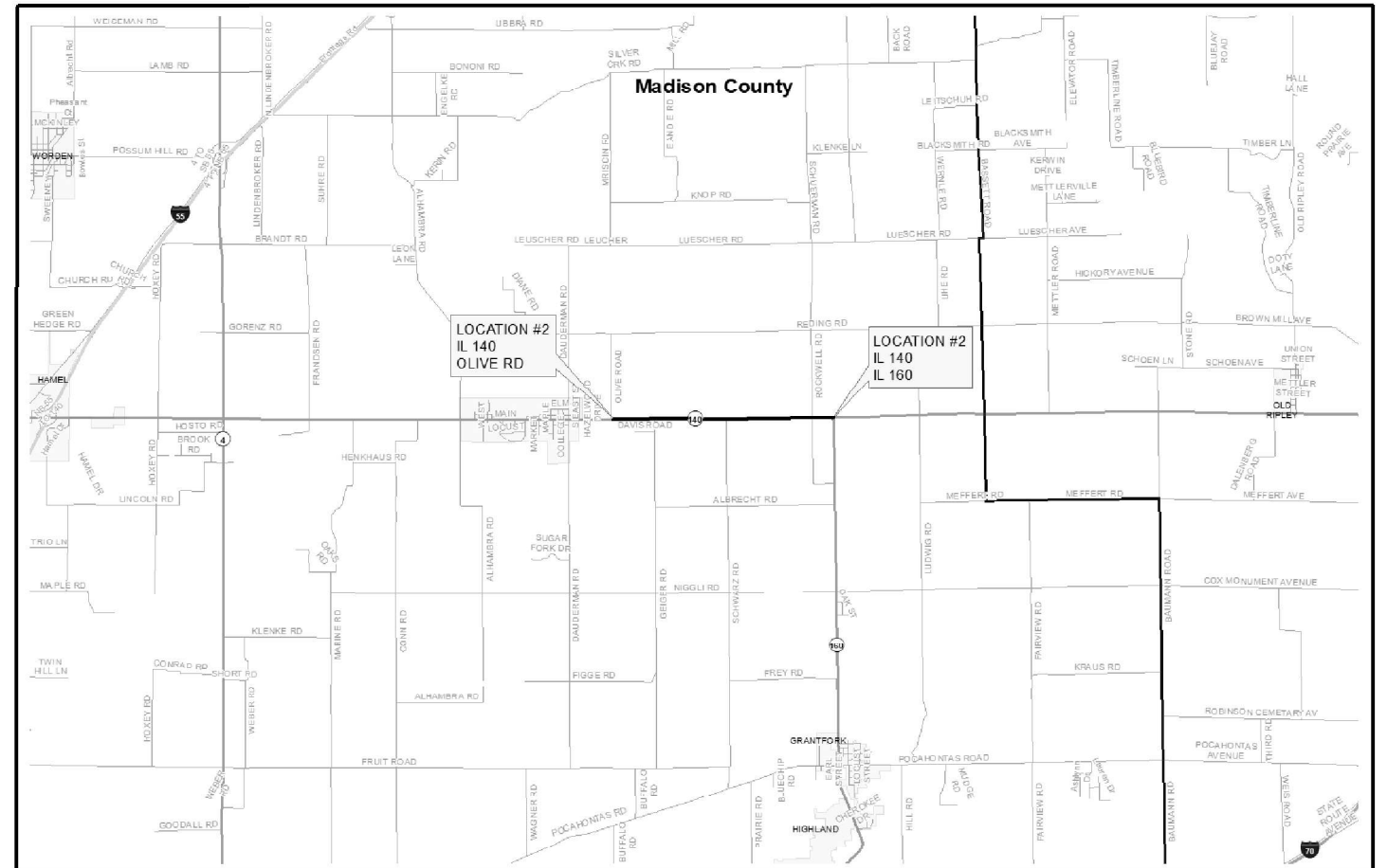
MODEL: Default
 FILE: Madis:prj\p1amcom.dwt\illinois.gov\p1amcom\documents\DOT_Offices\District_B\Project\087676\CAD\data\CAD\sheet\087676-PT-plan.dgn

REV. - MS

USER NAME = Simam PLOT SCALE = 100.0000' / in. PLOT DATE = 6/16/2021	DESIGNED - DRAWN - CHECKED - DATE -	REVISED - REVISED - REVISED + REVISED +	STATE OF ILLINOIS DEPARTMENT OF TRANSPORTATION	SCHEDULE OF QUANTITIES	SCALE:	SHEET 4 OF 4 SHEETS STA. TO STA.	F.A.I. RTE. VAR SECTION VAR DIS 8 MRK 2022-2 COUNTY MADISON TOTAL SHEETS 9 SHEET NO. 7 CONTRACT NO. 76P76 ILLINOIS CM. AID PROJECT
--	--	--	---	-------------------------------	--------	----------------------------------	---



MADISON COUNTY		STATIONING				LOCATION
LOCATION NO.	ROUTE/ROAD NAME	MS	TO	MS	LENGTH	
#1	IL 140	0.00	TO	7.53	7.53	IL 159 TO E of I-55 IN HAMEL
#2	IL 140	0.00	TO	2.25	2.25	OLIVE RD IN ALHAMBRA TO IL 160
#3	IL 162	0.00	TO	7.21	7.21	NAMEOKI RD IN GRANITE CITY TO IL 157
#4	MISSOURI AVE	0.00	TO	1.96	1.97	IL 3 TO 25TH ST IN GRANITE CITY
#5	ST THOMAS RD	0.00	TO	2.09	2.09	IL 3 N OF I-270 TO IL 3 S OF I-270
#6	W CHAIN OF ROCKS RD	0.00	TO	1.22	1.2	ST THOMAS RD TO OLD ALTON RD



MODEL Default
 FILE NAME: p:\mtdm\mcom_dot_files\dot\p\WIDOT\Documents\DOT_Office\District 8\Projects\0876976\CADD\DATA\CAD\Process\0876976-PL-08A.dgn

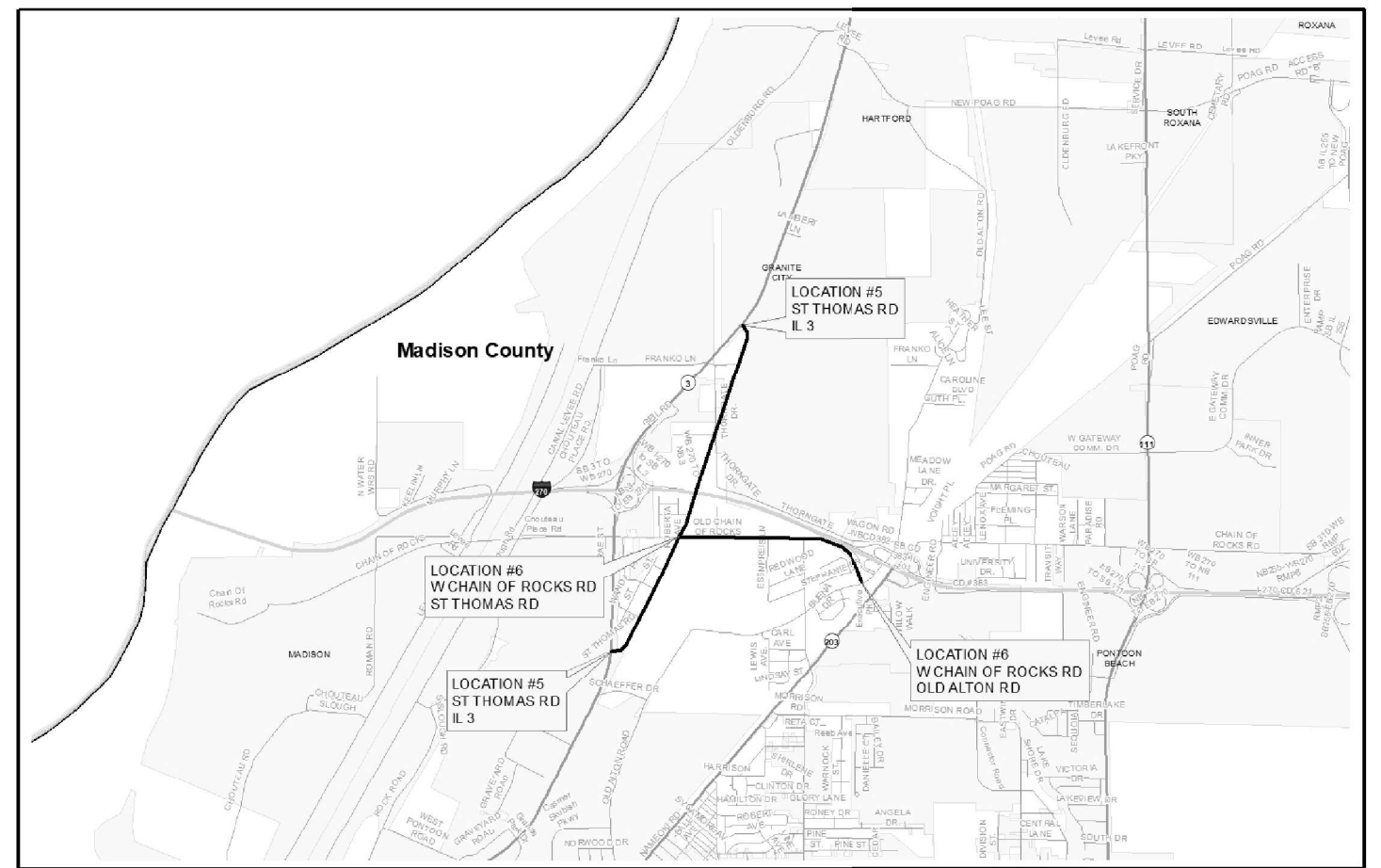
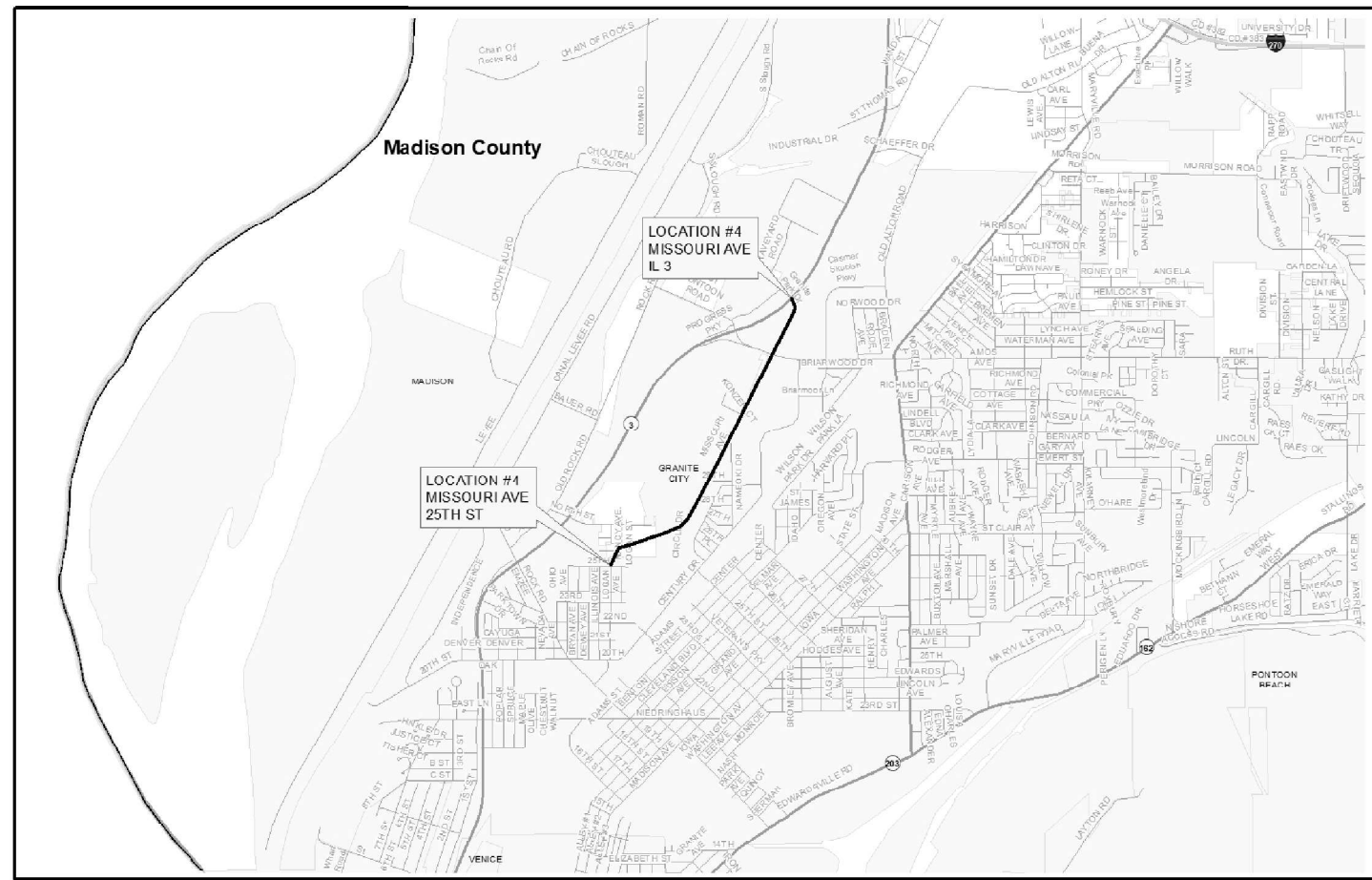
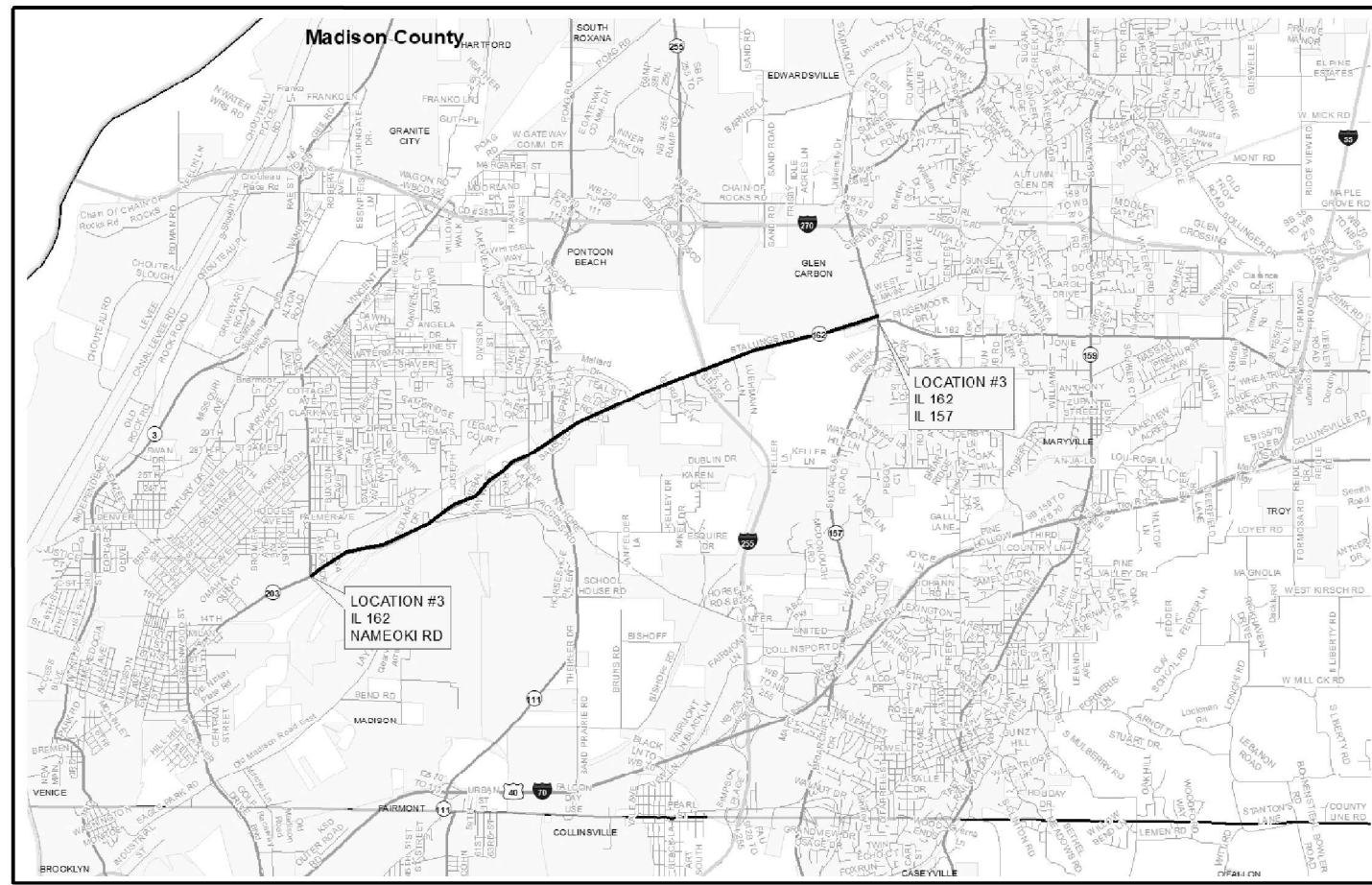
USER NAME = Slim	DESIGNED -	REVISED -
	DRAWN -	REVISED -
PLOT SCALE = 100,0015' / in.	CHECKED -	REVISED -
PLOT DATE = 6/16/2021	DATE -	REVISED -

**STATE OF ILLINOIS
DEPARTMENT OF TRANSPORTATION**

LOCATION MAPS

SCALE: NONE SHEET 1 OF 2 SHEETS STA. TO STA.

F.A. RTE.	SECTION	COUNTY	TOTAL SHEETS	SHEET NO.
VAR.	VAR DIS 8 MRK 2022-2	MADISON	9	8
CONTRACT NO. 76P76			ILLINOIS FED. AID PROJECT	



MODEL: Default
 FILE NAME: p:\mtdm\room_dot\illinois_dot\p\DOT\Documents\DOT_Office\District_8\Projects\0876976\CADD\DATA\CADProcess\0876976-rt-08a.dgn

USER NAME =	Sliman	DESIGNED -	REVISIONS -
DRAWN -		CHECKED -	REVISIONS -
PLOT SCALE =	100.0015' / in.	DATE -	REVISIONS -
PLOT DATE =	6/16/2021		

**STATE OF ILLINOIS
DEPARTMENT OF TRANSPORTATION**

LOCATION MAPS

SCALE: NONE SHEET 2 OF 2 SHEETS STA. TO STA.

F.A. RTE.	SECTION	COUNTY	TOTAL SHEETS	SHEET NO.
VAR.	VAR. DIS. 8 MRK 2022-2	MADISON	9	9
			CONTRACT NO. 76P76	
ILLINOIS FED. AID PROJECT				