

STATE OF ILLINOIS
DEPARTMENT OF TRANSPORTATION

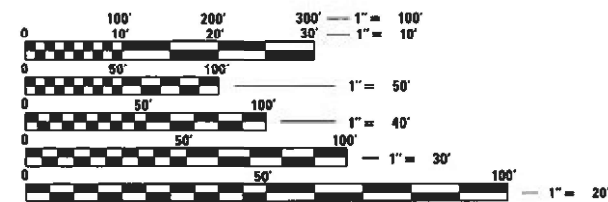
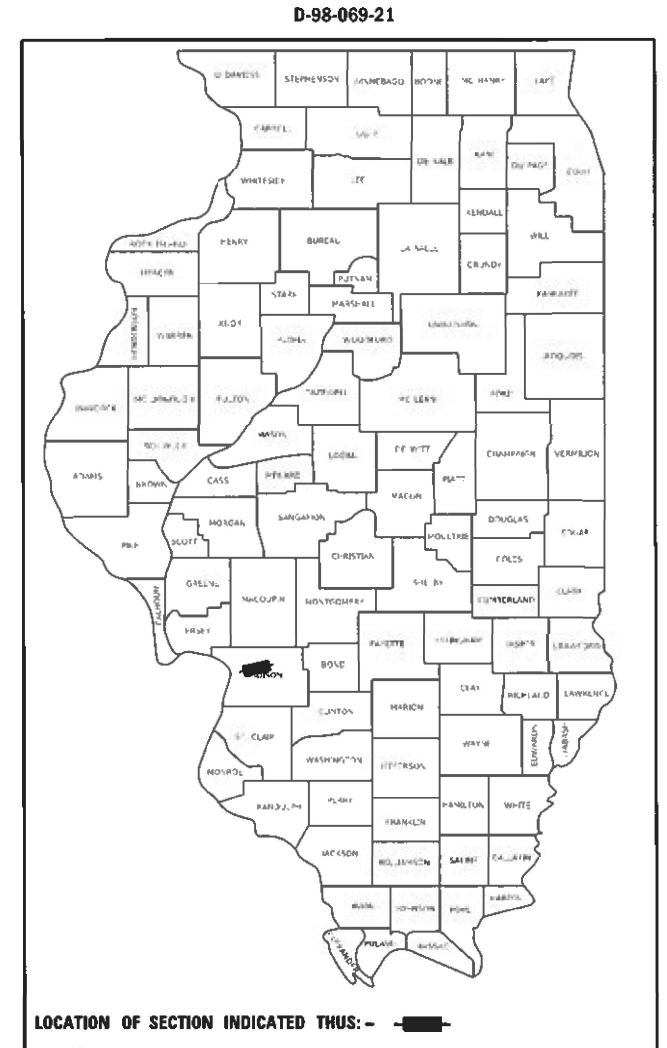
F.A.P. RTE	SECTION	COUNTY	TOTAL SHEETS	SHEET NO.
592	(72,56,65-2)DM-1	MADISON	5	1
		ILLINOIS	CONTRACT NO. 76P63	

FOR INDEX OF SHEETS, SEE SHEET NO. 2

**PROPOSED
HIGHWAY PLANS**

**FAP ROUTE 592 (IL 157)
SECTION (72,56,65-2)DM-1
DEMOLITION
MADISON COUNTY**

C-98-100-21

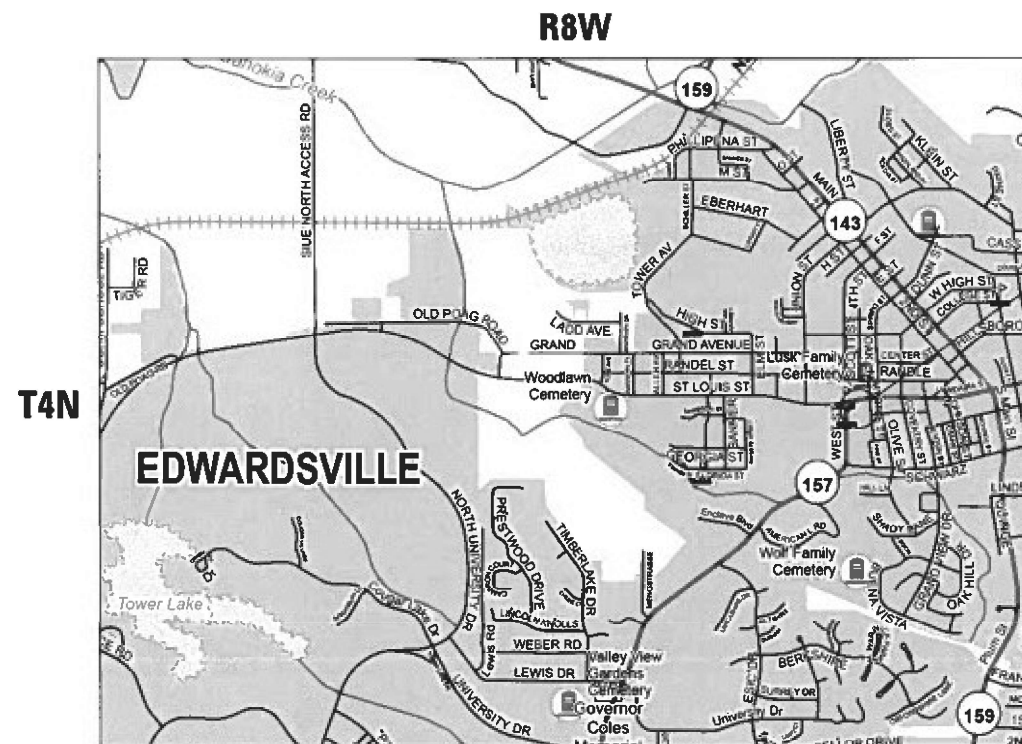


FULL SIZE PLANS HAVE BEEN PREPARED USING STANDARD ENGINEERING SCALES. REDUCED SIZED PLANS WILL NOT CONFORM TO STANDARD SCALES. IN MAKING MEASUREMENTS ON REDUCED PLANS, THE ABOVE SCALES MAY BE USED.

J.U.L.I.E.
JOINT UTILITY LOCATION INFORMATION FOR EXCAVATORS
1-800-892-0123
OR 811

PROJECT ENGINEER: BILLIE OWEN (618) 346-3209
PROJECT MANAGER: MIKE BERG (618) 346-3411

CONTRACT NO. 76P63



PARCEL 8718027
38.81 N
89.96 W

STATE OF ILLINOIS
DEPARTMENT OF TRANSPORTATION

SUBMITTED July 2, 2021
Keith Roberts
REGIONAL ENGINEER

August 13, 2021
Scott A. Etk
ENGINEER OF DESIGN AND ENVIRONMENT

August 13, 2021
General Jen
DIRECTOR OF HIGHWAYS PROJECT IMPLEMENTATION

**PRINTED BY THE AUTHORITY
OF THE STATE OF ILLINOIS**

INDEX OF SHEETS

- 1 COVER SHEET
- 2 INDEX OF SHEETS, HIGHWAY STANDARDS, GENERAL NOTES AND COMMITMENTS
- 3-4 SUMMARY OF QUANTITIES
- 5 PLAN SHEET

HIGHWAY STANDARDS

- 280001-07
- 701001-02
- 701006-05
- 701901-08
- 000001-08
- 001006

GENERAL NOTES

1 THE FOLLOWING UTILITIES ARE KNOWN TO HAVE FACILITIES WITHIN THE PROJECT AREA:

EVERSTREAM GLC HOLDING COMPANY LLC
 FRONTIER COMMUNICATIONS
 JERSEY COUNTY RURAL WATER COMPANY
 M.J.M. ELECTRICAL COOPERATIVE, INC.

2 A QUANTITY FOR TWO APPLICATIONS OF MULCH, METHOD 2 HAS BEEN INCLUDED IN THIS CONTRACT. ONE APPLICATION OF MULCH IS TO BE PLACED OVER THE TEMPORARY SEEDING. THE SECOND APPLICATION WILL BE USED AFTER THE FINAL SEEDING OPERATIONS ARE COMPLETE.

COMMITMENTS

NONE

REV. - MS

MODEL: \\MODELS\MAMES
 FILE NAME: \\p1500000m.dos\illinois.gov\PWIDOT\Documents\UDOT_Offices\District_8\Projects\IDB\76P63\CADD\Data\CAD\Sheets\IDB\76P63-sht-genmate.dgn

USER NAME = arteenjn	DESIGNED - _____	REVISED - _____	STATE OF ILLINOIS DEPARTMENT OF TRANSPORTATION	INDEX OF SHEETS, HIGHWAY STANDARDS GENERAL NOTES AND COMMITMENTS	F.A.P. RTE.	SECTION	COUNTY	TOTAL SHEETS	SHEET NO.	
DRAWN - _____	CHECKED - _____	REVISED - _____			592	(7Z,56,65-2)DM-1	MADISON	5	2	
PLOT SCALE = 40.0000' / in.	DATE - _____	REVISED - _____			CONTRACT NO. 76P63					
PLOT DATE = 7/16/2021	DATE - _____	REVISED - _____			ILLINOIS FED. AID PROJECT					
				SCALE: _____		SHEET _____ OF _____ SHEETS		STA. _____ TO STA. _____		

100%
STATE

				CONSTR. CODE
CODE NO.	ITEM	UNIT	TOTAL QUANTITY	URBAN 44
20100210	TREE REMOVAL (OVER 15 UNITS DIAMETER)	UNIT	65	65
25000110	SEEDING, CLASS 1A	ACRE	0.25	0.25
25000400	NITROGEN FERTILIZER NUTRIENT	POUND	9	9
25000500	PHOSPHORUS FERTILIZER NUTRIENT	POUND	9	9
25000600	POTASSIUM FERTILIZER NUTRIENT	POUND	9	9
25000700	AGRICULTURAL GROUND LIMESTONE	TON	0.1	0.1
25100115	MULCH, METHOD 2	ACRE	0.25	0.25
28000250	TEMPORARY EROSION CONTROL SEEDING	POUND	10	10
28000400	PERIMETER EROSION BARRIER	FOOT	270	270
44000200	DRIVEWAY PAVEMENT REMOVAL	SQ YD	305	305
67100100	MOBILIZATION	L SUM	1	1
Z0007601	BUILDING REMOVAL NO. 1	L SUM	1	1
* 66900200	NON-SPECIAL WASTE DISPOSAL	CU YD	85	85
* 66900530	SOIL DISPOSAL ANALYSIS	EACH	1	1

* SPECIALTY ITEM

REV. - MS

MODEL: \\MODELNAME\$
FILE NAME: P:\ipart\2021\04\illinois.gov\PROJECTS\Documents\DOT_Offices\District 8\Project\DOT\6693\CADD\DATA\CADD\RES\DOT\6693-PT-500.dgn

USER NAME = arteenjin	DESIGNED - _____	REVISED - _____
	DRAWN - _____	REVISED - _____
PLOT SCALE = 40.0004' / in.	CHECKED - _____	REVISED - _____
PLOT DATE = 7/6/2021	DATE - _____	REVISED - _____

**STATE OF ILLINOIS
DEPARTMENT OF TRANSPORTATION**

SUMMARY OF QUANTITIES			
SCALE: _____	SHEET _____	OF _____	SHEETS
STA. _____	TO STA. _____		

F.A.P. RTE.	SECTION	COUNTY	TOTAL SHEETS	SHEET NO.
592	(7Z,56,65-2)DM-1	MADISON	5	3
			CONTRACT NO. 76P63	
ILLINOIS FED. AID PROJECT				

100%
STATE

				CONSTR. CODE
CODE NO.	ITEM	UNIT	TOTAL QUANTITY	URBAN
				44
* 66901001	REGULATED SUBSTANCES PRE-CONSTRUCTION PLAN	L SUM	1	1
* 66901003	REGULATED SUBSTANCES FINAL CONSTRUCTION REPORT	L SUM	1	1
* 66901006	REGULATED SUBSTANCES MONITORING	CAL DA	2	2

* SPECIALTY ITEM

MODEL: \\MODEL\NAME
FILE NAME: \\pub\mcom\m.dct\illinois\gov\PWIDOT\Documents\IDOT_Offices\District 8\Projects\076963\CADD\DATA\CAD\Faces\076963-rt-500.dgn

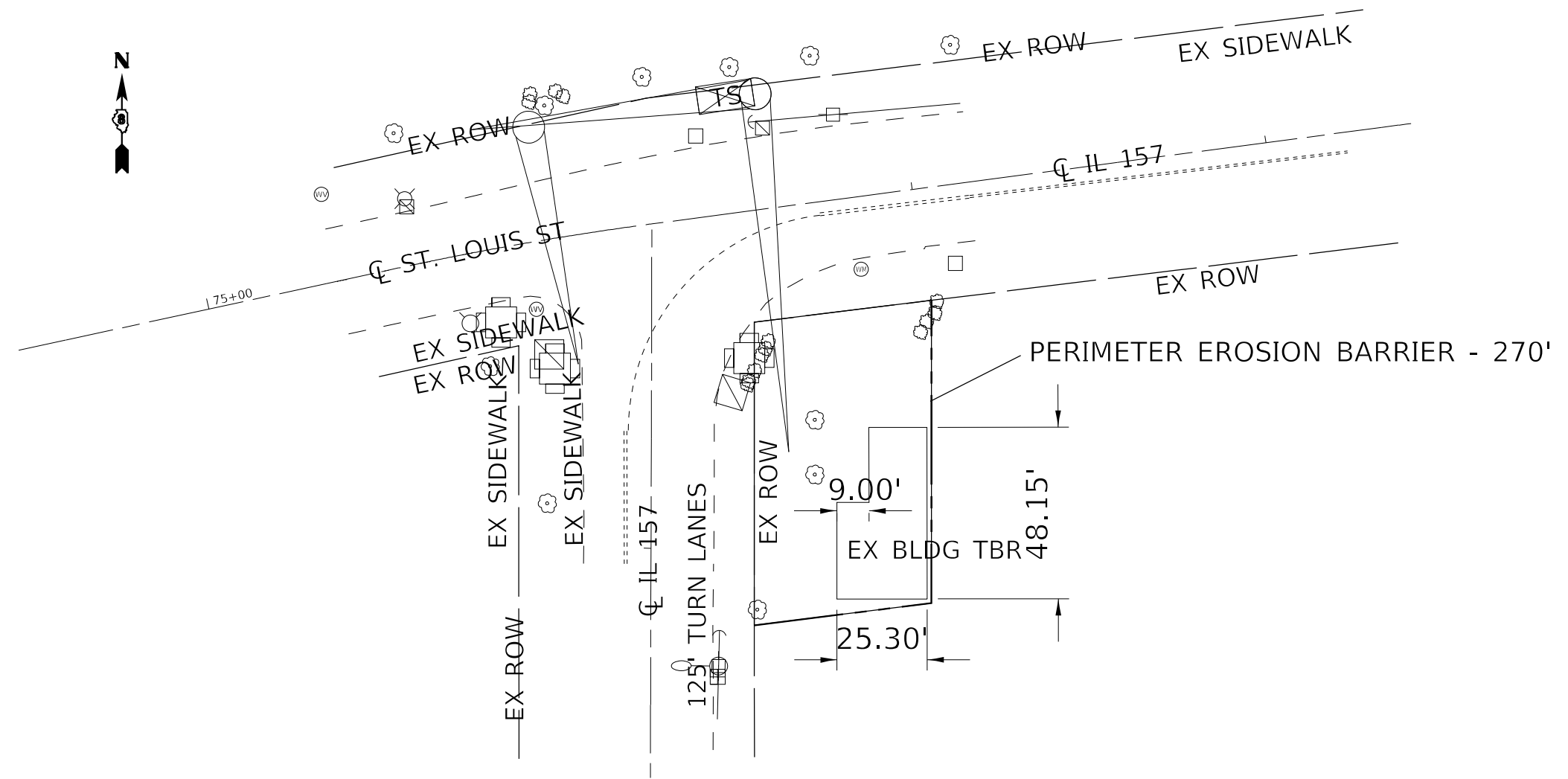
USER NAME = arteejn	DESIGNED - _____	REVISED - _____
	DRAWN - _____	REVISED - _____
PLOT SCALE = 40,0000 * / in.	CHECKED - _____	REVISED - _____
PLOT DATE = 7/6/2021	DATE - _____	REVISED - _____

**STATE OF ILLINOIS
DEPARTMENT OF TRANSPORTATION**

SUMMARY OF QUANTITIES

SCALE: _____ SHEET ___ OF ___ SHEETS STA. _____ TO STA. _____

F.A.P. RTE.	SECTION	COUNTY	TOTAL SHEETS	SHEET NO.
592	(7Z,56,65-2)DM-1	MADISON	5	4
CONTRACT NO. 76P63			ILLINOIS FED. AID PROJECT	



MODEL: SH0DELENAMES
 FILE NAME: \\p1ancomad01\illinois\p1\DOT\Documents\DOT_offices\dot\dot @project\DOT\76P63\CAD\DATA\CAD\dot\dot\DOT\76P63-sheet1.dgn

USER NAME = a1teenjn	DESIGNED - _____	REVISED - _____
DRAWN - _____	REVISIONS - _____	REVISIONS - _____
PLOT SCALE = 40,0261" / in.	CHECKED - _____	REVISIONS - _____
PLOT DATE = 7/6/2021	DATE - _____	REVISIONS - _____

**STATE OF ILLINOIS
DEPARTMENT OF TRANSPORTATION**

**PLAN VIEW
PARCEL 8718027**

SCALE: _____ SHEET _____ OF _____ SHEETS STA. _____ TO STA. _____

F.A.P. RTE.	SECTION	COUNTY	TOTAL SHEETS	SHEET NO.
592	(72,56,65-2)DM-1	MADISON	5	5
CONTRACT NO. 76P63			ILLINOIS FED. AID PROJECT	