

STATE OF ILLINOIS  
DEPARTMENT OF TRANSPORTATION

F.A. RTE.	SECTION	COUNTY	TOTAL SHEETS	SHEET NO.
*	DIST 8 ELECTRICAL 2022-1	*	6	3
**VARIOUS	ILLINOIS	CONTRACT NO. 76P29		

**INDEX OF SHEETS**

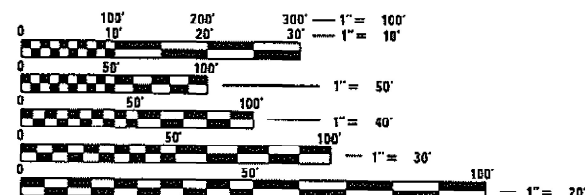
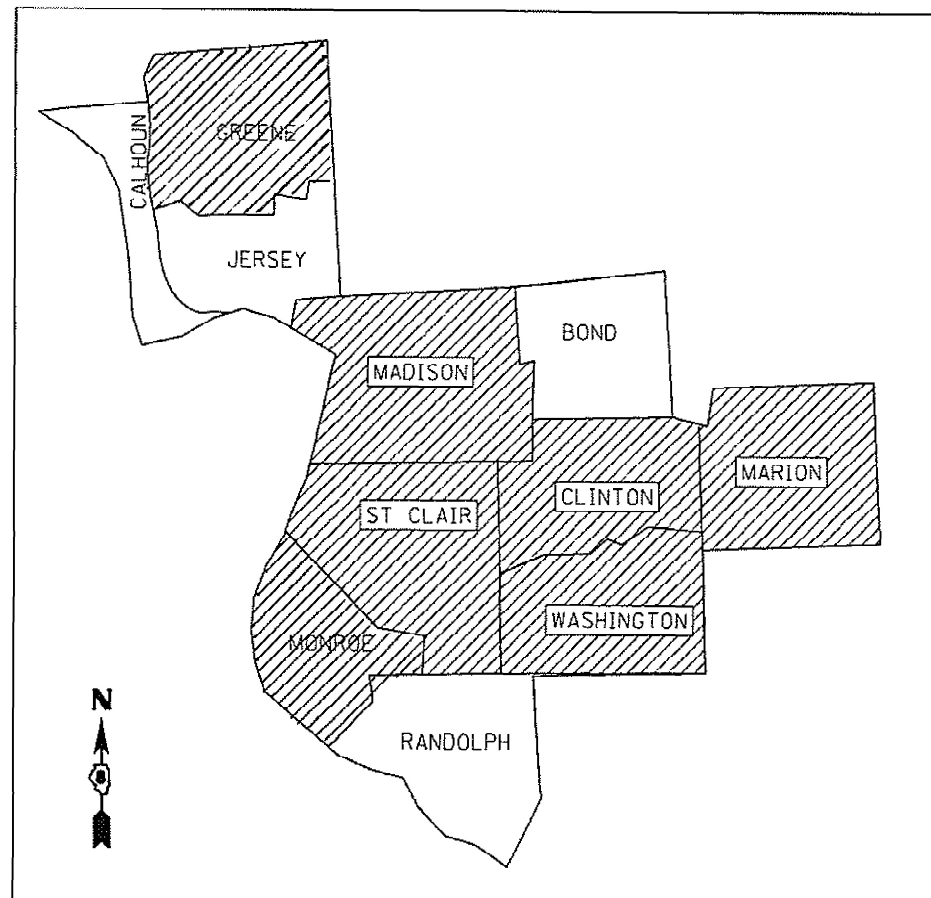
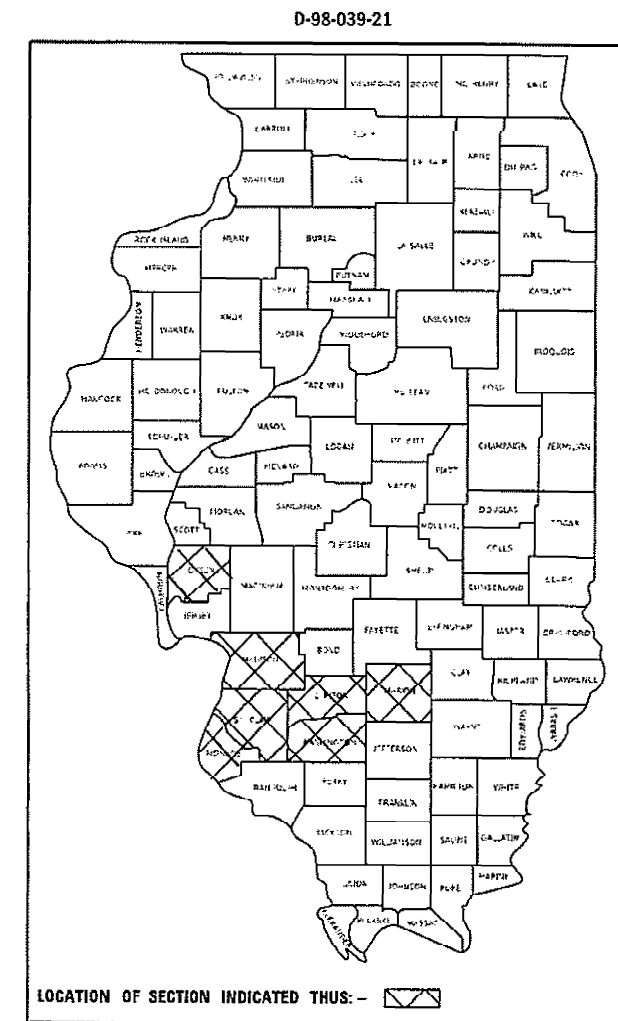
1. COVER SHEET
2. GENERAL NOTES AND TYPICAL WORK ORDER FORMS
3. SUMMARY OF QUANTITIES
- 4-6. MIXERS

FOR LIST OF HIGHWAY STANDARDS, SEE SHEET NO. 2

**PROPOSED  
HIGHWAY PLANS**

**VARIOUS ROUTES  
SECTION DIST 8 ELECTRICAL 2022-1  
REPAIR & MAINTENANCE OF ELECTRICAL  
EQUIPMENT AT PUMP STATIONS  
VARIOUS COUNTIES**

C-98-069-21



FULL SIZE PLANS HAVE BEEN PREPARED USING STANDARD ENGINEERING SCALES. REDUCED SIZED PLANS WILL NOT CONFORM TO STANDARD SCALES. IN MAKING MEASUREMENTS ON REDUCED PLANS, THE ABOVE SCALES MAY BE USED.

J.U.L.I.E.  
JOINT UTILITY LOCATION INFORMATION FOR EXCAVATORS  
1-800-892-0123  
OR 811

PROJECT ENGINEER: CHERYL KEPLAR (618) 346-3123  
PROJECT MANAGER: PHILLIP SAWYER (618) 346-3275  
SQUAD LEADER: MICHAEL PRESTON (618) 346-3190  
CONTRACT NO. 76P29

NOTE: WORK CAN BE LOCATED WITHIN ANY OF THE ABOVE NOTED COUNTIES WITHIN DISTRICT 8 / REGION 5.

STATE OF ILLINOIS  
DEPARTMENT OF TRANSPORTATION

SUBMITTED June 23, 2021  
*Keith Roberts*  
REGIONAL ENGINEER

August 13, 2021  
*Scott A. Elk*  
ENGINEER OF DESIGN AND ENVIRONMENT

August 13, 2021  
*James J. Gu...*  
DIRECTOR OF HIGHWAYS PROJECT IMPLEMENTATION 13

**PRINTED BY THE AUTHORITY  
OF THE STATE OF ILLINOIS**

GENERAL NOTES

1. THE LOCATIONS OF THE REPAIR AREAS SHALL BE DETERMINED BY THE ENGINEER/DEPARTMENT.
2. NO MATERIAL SHALL BE LEFT ON OR NEAR THE ROADWAY DURING NON-WORKING HOURS.
3. ANY NECESSARY TRAFFIC CONTROL WILL BE PROVIDED BY THE DEPARTMENT. APPROPRIATE STANDARDS ARE LISTED BELOW.
4. A FLAGGER MAY BE REQUIRED AT ALL TIMES WHEN WORKERS OR EQUIPMENT ARE ENCROACHING ON THE LANE OF TRAFFIC.
5. WHEN NO WORK IS BEING PERFORMED, THE FLAGGERS WILL NOT BE REQUIRED. IF THE FLAGGERS ARE NOT PRESENT, THE FLAGGER SIGNS SHALL BE REMOVED OR COVERED.
6. 45 & 55 MPH SIGNS ARE INCLUDED IN ALL INTERSTATE LANE CLOSURES. IF THE LANE CLOSURE DURATION IS LESS THAN 4 HOURS, THE 45 & 55 MPH SIGNS ARE NOT REQUIRED.
7. ANY WORK ORDER MAY BE CANCELLED AT THE ENGINEER'S/DEPARTMENT'S DISCRETION.
8. NO OVERNIGHT LANE CLOSURES WILL BE ALLOWED.

9. HIGHWAY STANDARDS

000001-08	701301-04
001006	701400-10
701001-02	701401-12
701006-05	701601-09
701106-02	701901-08



**Work Order**

Requested By: \_\_\_\_\_ Date: \_\_\_\_\_ Time: \_\_\_\_\_

Assigned To: \_\_\_\_\_ Received From: \_\_\_\_\_

Estimated Cost: \_\_\_\_\_

Location: \_\_\_\_\_

Problem: \_\_\_\_\_

Ref/Accident #: \_\_\_\_\_ Claim #: \_\_\_\_\_

Remarks: \_\_\_\_\_  
 \_\_\_\_\_  
 \_\_\_\_\_  
 \_\_\_\_\_  
 \_\_\_\_\_  
 \_\_\_\_\_  
 \_\_\_\_\_  
 \_\_\_\_\_  
 \_\_\_\_\_  
 \_\_\_\_\_  
 \_\_\_\_\_

Completed By: \_\_\_\_\_ Date/Time Completed: \_\_\_\_\_

MODEL: Default  
 FILE: M:\etc...  
 PROJECT: ...  
 DATE: 6/15/2021

USER NAME = prestonrme	DESIGNED -	REVISED -
DRAWN -	REVISED -	
PLOT SCALE = 100.0000" / in.	CHECKED -	REVISED +
PLOT DATE = 6/15/2021	DATE -	REVISED +

**STATE OF ILLINOIS  
DEPARTMENT OF TRANSPORTATION**

**GENERAL NOTES  
TYPICAL WORK ORDER FORM**

SCALE: \_\_\_\_\_ SHEET OF \_\_\_\_\_ SHEETS STA. \_\_\_\_\_ TO STA. \_\_\_\_\_

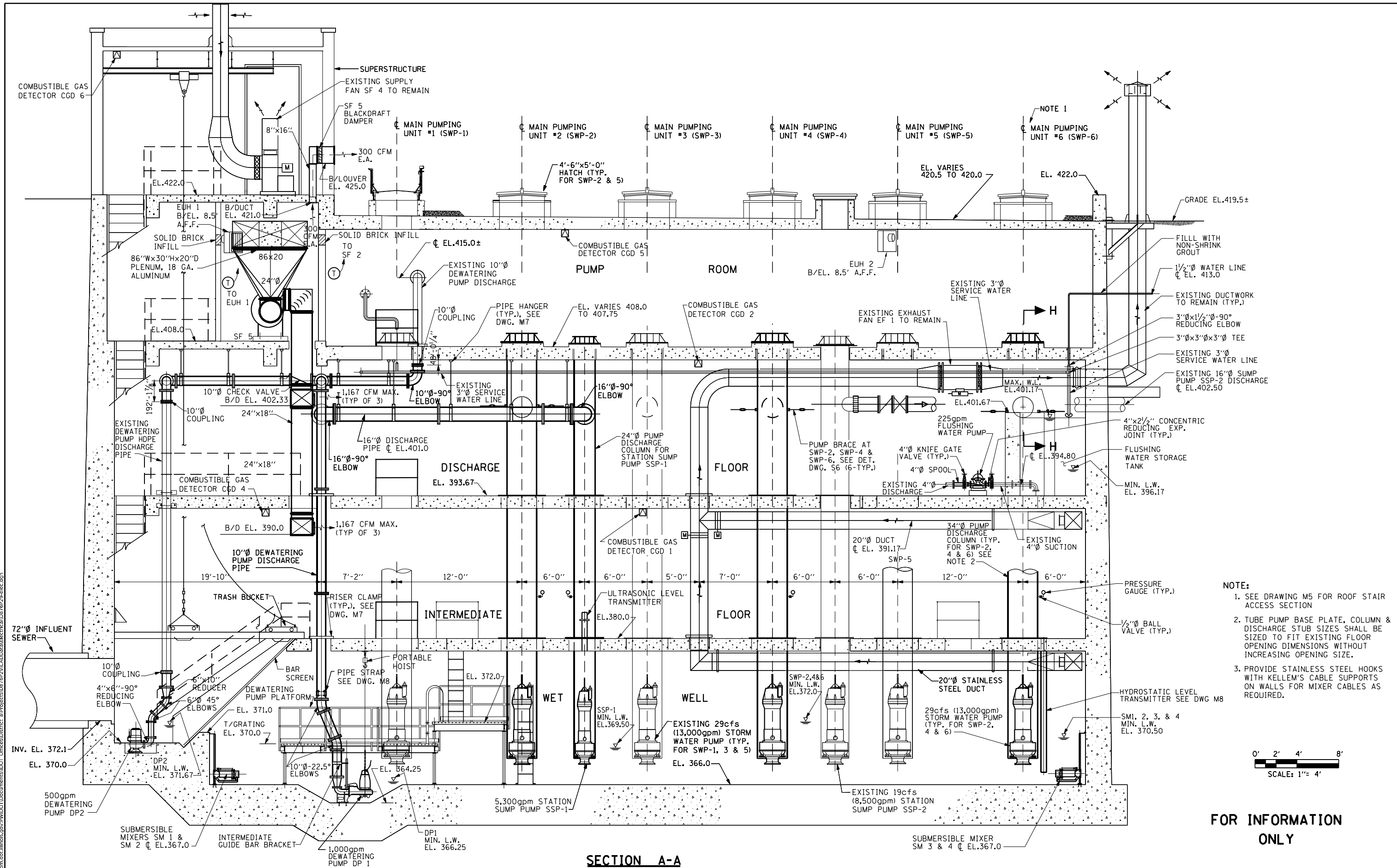
F.A. Various	SECTION	COUNTY	TOTAL SHEETS	SHEET NO.
v8ri	DIST 8 ELECTRICAL 2022-1	*	6	2
**VARIOUS			CONTRACT NO. 76P29	
ILLINOIS FED. AID PROJECT				

CODE NO.	ITEM	UNIT	100% STATE	CONSTRUCTION CODE
			TOTAL QUANTITY	URBAN 0043
X0327020	SUBMERSIBLE MIXER	EACH	1	1
X0327111	MAGNUM BREAKER	EACH	1	1
X0327495	JOURNEYMAN ELECTRICIAN	HOUR	350	350
X0327496	APPRENTICE ELECTRICIAN	HOUR	140	140
X0327497	PICK-UP TRUCK	HOUR	250	250
X0327498	BUCKET TRUCK (LENGTH LESS THAN 35 FEET)	HOUR	150	150
X0327499	BUCKET TRUCK (LENGTH 35 TO 65 FEET)	HOUR	75	75
X0327734	TRUCK CRANE	HOUR	25	25

MODEL: Default  
 FILE: M:\METS\_PlanRoom\room.dat\Illinois.gov\WIDOT\Documents\DOT\_Offices\District 8\Projects\0876P29\CADD\0876P29\Electrical\0876P29-elec.dgn

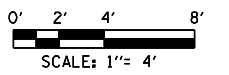
REV. - MS

USER NAME = prestonme	DESIGNED -	REVISED -	<b>STATE OF ILLINOIS DEPARTMENT OF TRANSPORTATION</b>	<b>SUMMARY OF QUANTITIES</b>			F.A. Various	SECTION	COUNTY	TOTAL SHEETS	SHEET NO.
	DRAWN -	REVISED -					Vari	Dist 8 Electrical 2022-1	*	6	3
PLOT SCALE = 100.0000' / in.	CHECKED -	REVISED -					*-VARIOUS		CONTRACT NO. 76P29		
PLOT DATE = 6/15/2021	DATE -	REVISED -		SCALE:	SHEET	OF	SHEETS	STA.	TO	STA.	ILLINOIS FED. AID PROJECT



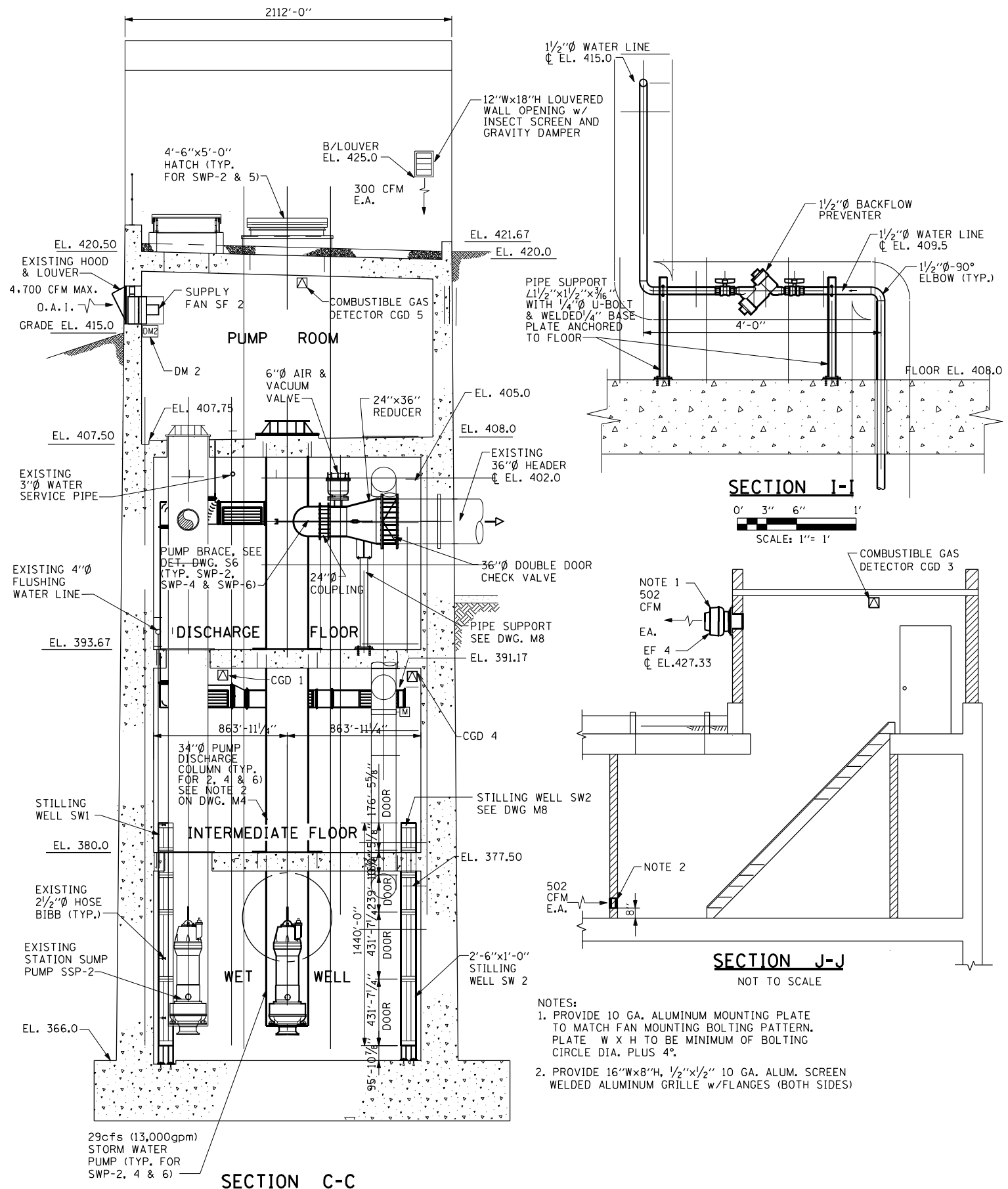
SECTION A-A

- NOTE:**
- 1. SEE DRAWING M5 FOR ROOF STAIR ACCESS SECTION
  - 2. TUBE PUMP BASE PLATE, COLUMN & DISCHARGE STUB SIZES SHALL BE SIZED TO FIT EXISTING FLOOR OPENING DIMENSIONS WITHOUT INCREASING OPENING SIZE.
  - 3. PROVIDE STAINLESS STEEL HOOKS WITH KELLEM'S CABLE SUPPORTS ON WALLS FOR MIXER CABLES AS REQUIRED.



**FOR INFORMATION ONLY**

MODEL: Default FILE NAME: C:\pwworkspace\Illinois\pwworkspace\DWG\7629\7629-1.dwg	USER NAME = prestonne	DESIGNED -	REVISED -	<b>STATE OF ILLINOIS DEPARTMENT OF TRANSPORTATION</b>	<b>MECHANICAL SECTIONS</b>				F.A. RTE.	SECTION	COUNTY	TOTAL SHEETS	SHEET NO.
	PLOT SCALE = 814.7909' / in.	CHECKED -	REVISED -		~	DIST 8 ELECTRICAL 2022-1	*	6	4				
	PLOT DATE = 6/15/2021	DATE -	REVISED -		SCALE:	SHEET	OF	SHEETS	STA.	TO STA.	ILLINOIS	FED. AID PROJECT	
												CONTRACT NO. 7629	



**SECTION I-I**  
0' 3" 6" 1'  
SCALE: 1" = 1'

**SECTION J-J**  
NOT TO SCALE

**SECTION C-C**

NOTE 1  
502 CFM  
E.A.  
EF 4  
CL. EL. 427.33

NOTES:  
1. PROVIDE 10 GA. ALUMINUM MOUNTING PLATE TO MATCH FAN MOUNTING BOLTING PATTERN. PLATE W X H TO BE MINIMUM OF BOLTING CIRCLE DIA. PLUS 4".  
2. PROVIDE 16"Wx8"H, 1/2"x1/2" 10 GA. ALUM. SCREEN WELDED ALUMINUM GRILLE w/FLANGES (BOTH SIDES)

**FOR INFORMATION ONLY**

MODEL: Default  
 FILE NAME: p:\pub\pumproom.dwg  
 PROJECT: 087629-25\CADD\DATA\Electrical\087629-25-11.dwg  
 PROJECT: 087629-25\CADD\DATA\Electrical\087629-25-11.dwg

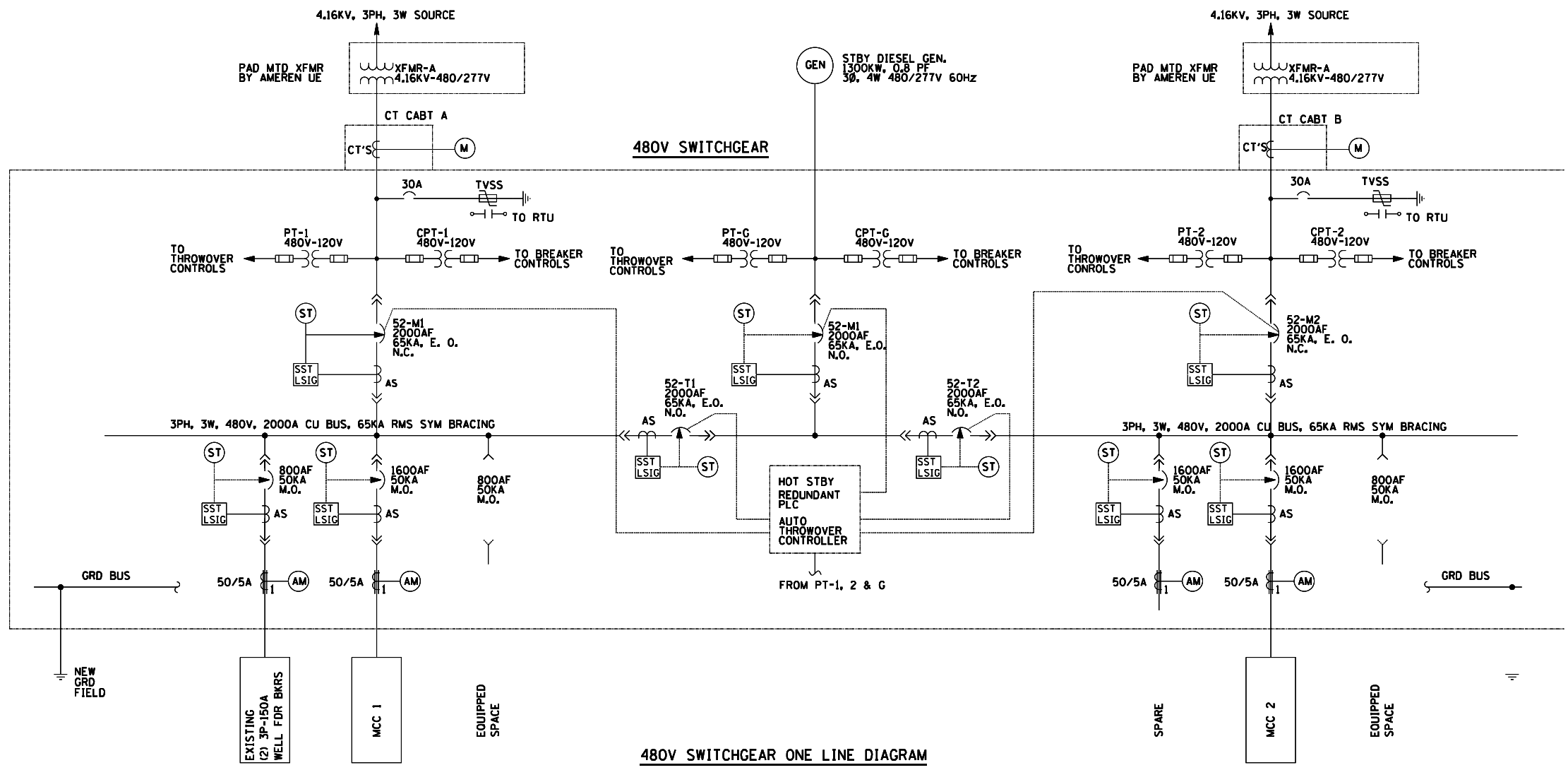
USER NAME = prestanme	DESIGNED -	REVISED -
	DRAWN -	REVISED -
PLOT SCALE = 814.7909' / in.	CHECKED -	REVISED -
PLOT DATE = 6/15/2021	DATE -	REVISED -

**STATE OF ILLINOIS  
DEPARTMENT OF TRANSPORTATION**

**MECHANICAL SECTIONS**

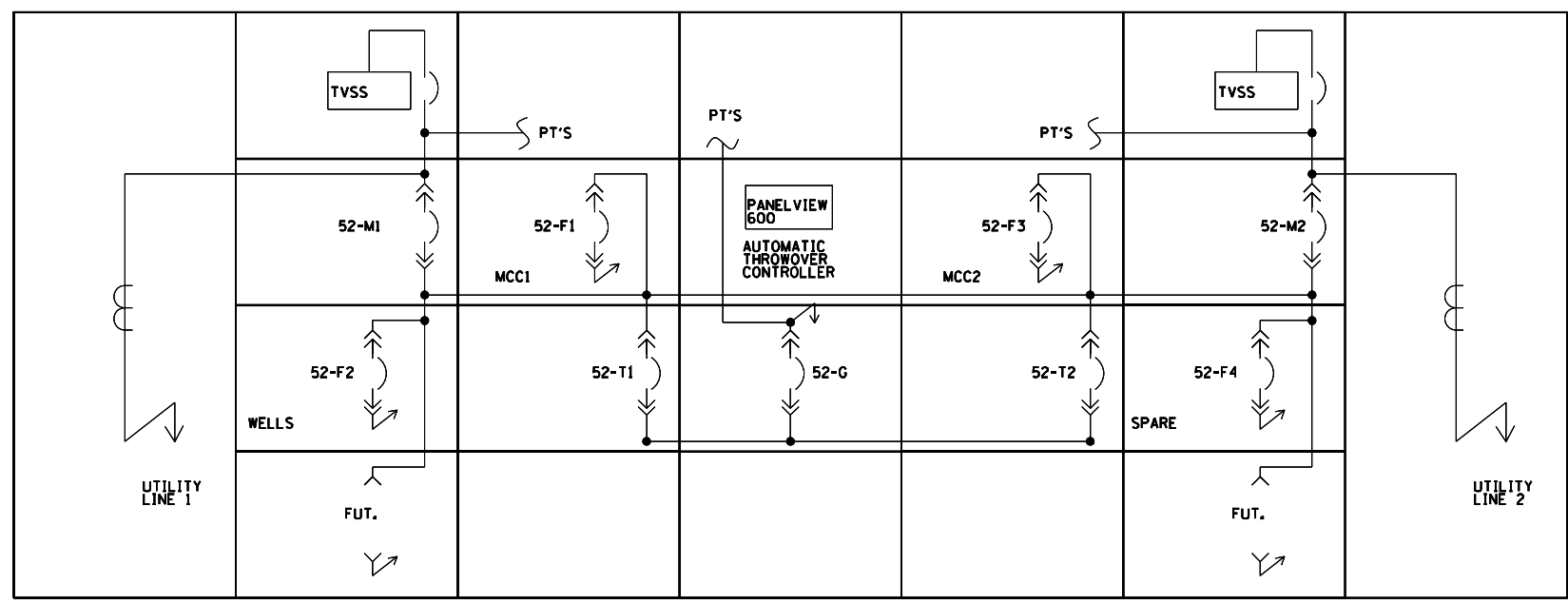
SCALE: SHEET OF SHEETS STA. TO STA.

F.A. VARIOUS	SECTION	COUNTY	TOTAL SHEETS	SHEET NO.
Dist 8 Electrical 2022-1	*	*	6	5
* = VARIOUS		CONTRACT NO. 76P29		
ILLINOIS		FED. AID PROJECT		



- LEGEND:**
- AS CURRENT SENSOR
  - CT CURRENT TRANSFORMER
  - EO ELECTRIC OPERATOR
  - MO MANUALLY OPERATED
  - MCCB MOLDED CASE CIRCUIT BREAKER
  - PT POTENTIAL TRANSFORMER
  - CPT CONTROL POWER TRANSFORMER
  - CLF INDICATES CURRENT LIMITING TYPE
  - ↘ HIGH VOLTAGE CABLE LOAD BREAK CONNECTOR
  - ⊞ FUSE
  - ↔ DRAW OUT TYPE LOW VOLTAGE POWER CIRCUIT BREAKER WITH BUILT-IN CURRENT SENSOR
  - AS
  - LSIG SOLID STATE TRIP DEVICE
  - LOWER LETTERS: L - LONG TIME DELAY, S - SHORT TIME DELAY, I - INSTANTANEOUS, G - GROUND FAULT
  - ST SHUNT TRIP
  - AM AMMETER

- NOTES:**
1. SPACE SHALL BE PREPARED TO ACCEPT A FUTURE BREAKER.
  2. ALL BREAKERS SHALL HAVE DIGITRIP DT-1150, WITH SYSTEM COMMUNICATION.



FOR INFORMATION ONLY

MODEL: Default FILE NAME: p:\pub\room.dat\illinois.gov\PIWDOT\Documents\DOT\_Offices\District 8\Projects\0876P29\CADD\Drawings\Electrical\0876P29-01.ecad

USER NAME = prestonme	DESIGNED -	REVISED -
	DRAWN -	REVISED -
PLOT SCALE = 814.7909' / in.	CHECKED -	REVISED -
PLOT DATE = 6/15/2021	DATE -	REVISED -

STATE OF ILLINOIS  
DEPARTMENT OF TRANSPORTATION

PUMP STATION SWITCHGEAR ONE LINE DIAGRAM & ELEVATION			
SCALE:	SHEET	OF SHEETS	STA. TO STA.

F.A. Vari	SECTION	COUNTY	TOTAL SHEETS	SHEET NO.
Var1	Dist 8 Electrical 2022-1	*	6	6
*=VARIOUS		CONTRACT NO. 76P29		
ILLINOIS		FED. AID PROJECT		