

STATE OF ILLINOIS
DEPARTMENT OF TRANSPORTATION

F.A.S. RTE.	SECTION	COUNTY	TOTAL SHEETS	SHEET NO.
310	(10) SFY, Y	KANKAKEE	9	1
		ILLINOIS	CONTRACT NO. 66K18	

INDEX OF SHEETS

- 1 COVER SHEET
- 2 GENERAL NOTES
- 3-4 SUMMARY OF QUANTITIES
- 5 TYPICAL SECTIONS
- 6-8 SCHEDULES
- 9 DETAILS

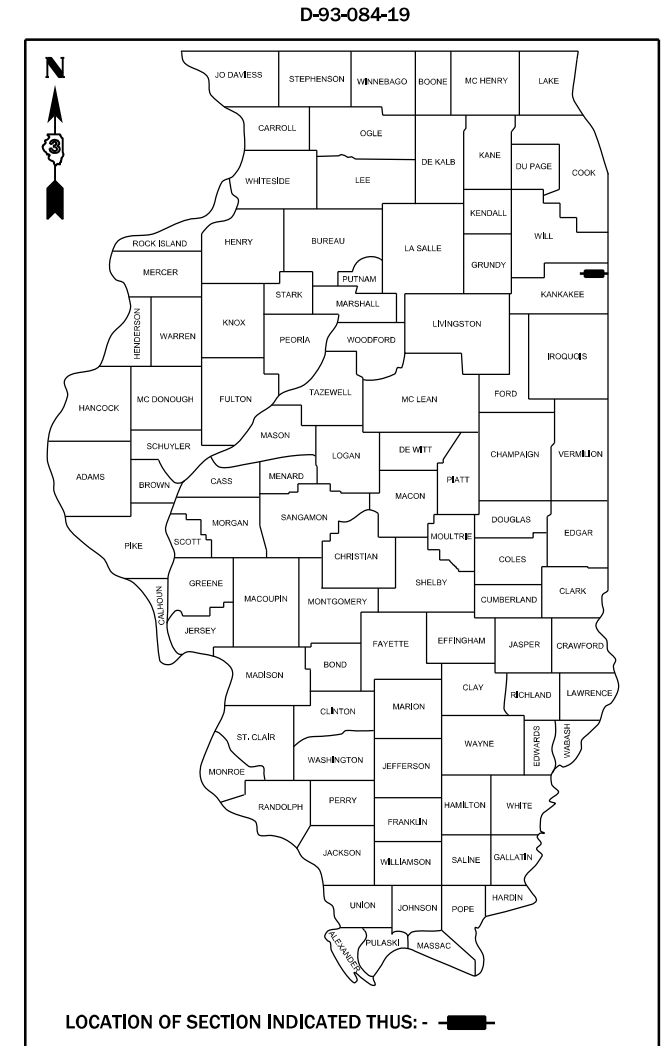
HIGHWAY STANDARDS

- 000001-08 STANDARD SYMBOLS, ABBREVIATIONS AND PATTERNS
- 001006 DECIMAL OF AN INCH AND OF A FOOT
- 406201-01 MAILBOX TURNOUT
- 482001-02 HMA SHOULDER ADJACENT TO FLEXIBLE PAVEMENT
- 482006-03 HMA SHOULDER ADJACENT TO RIGID PAVEMENT
- 642006-01 SHOULDER RUMBLE STRIPS, 8 INCH
- 701006-05 OFF-ROAD OPERATIONS 2L, 2W, 15' (4.5 m) TO 24" (600 mm) FROM PAVEMENT EDGE
- 701311-03 LANE CLOSURE, 2L, 2W, MOVING OPERATIONS - DAY ONLY
- 701326-04 LANE CLOSURE, 2L, 2W, PAVEMENT WIDENING, FOR SPEEDS ≥ 45 MPH
- 701901-08 TRAFFIC CONTROL DEVICES

**PROPOSED
HIGHWAY PLANS**

**FAS ROUTE 310 (IL 17)
SECTION (10) SFY, Y
PROJECT: HSIP - WA2S(432)
SHOULDER WIDENING AND RUMBLE STRIPS
KANKAKEE COUNTY**

C-93-104-19



IL 17 - MAJOR COLLECTOR
2019 ADT = 4100
P.V. = 65.2% S.U. = 6.7% M.U. = 28.1%

STATE OF ILLINOIS
DEPARTMENT OF TRANSPORTATION

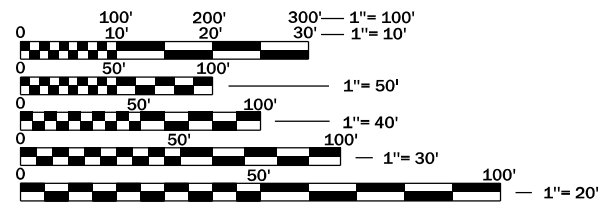
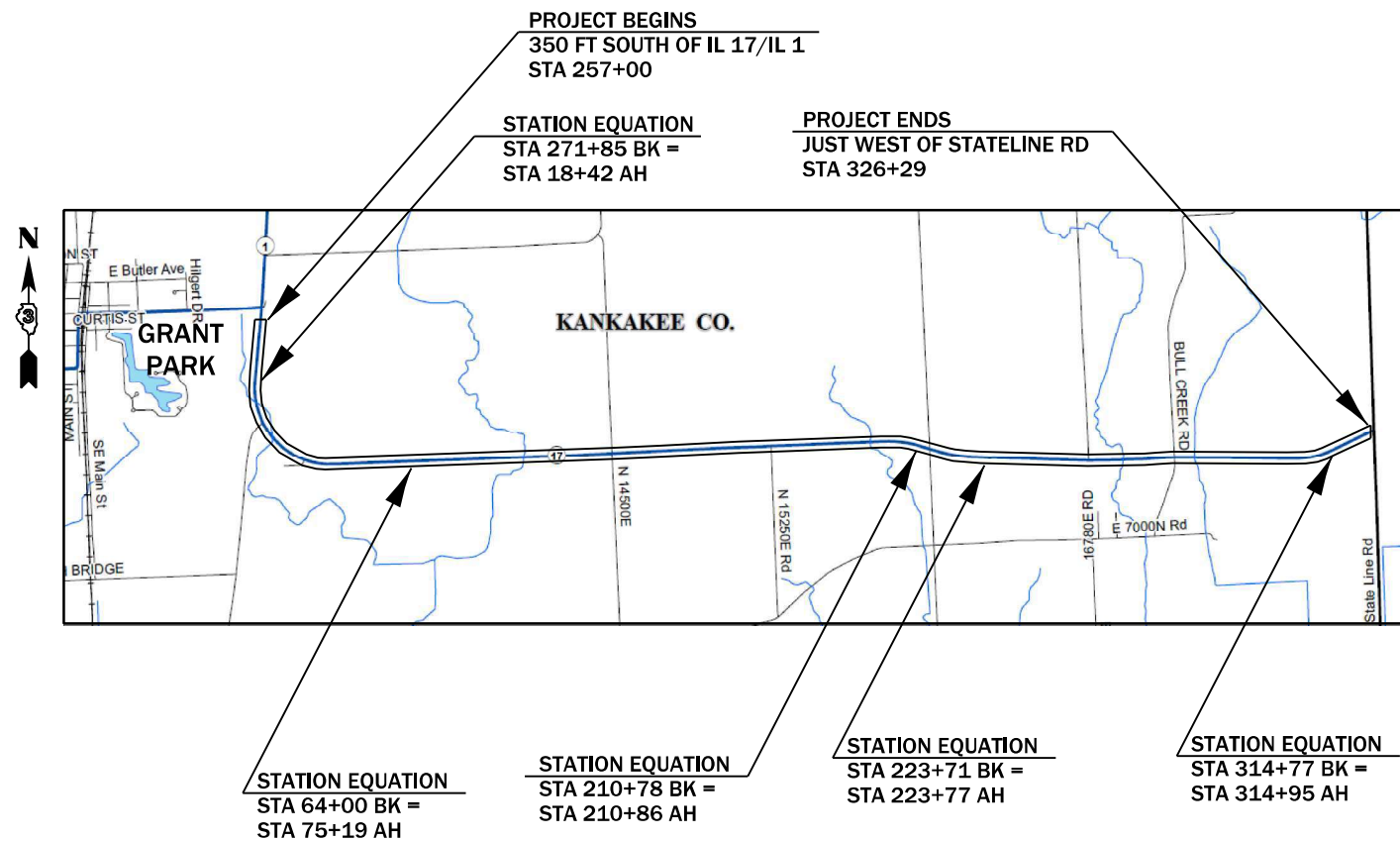
SUBMITTED June 28, 2021

Thomas Alford
REGIONAL ENGINEER

August 13, 2021
Scott A. Elk
ENGINEER OF DESIGN AND ENVIRONMENT

August 13, 2021
James J. ...
DIRECTOR OF HIGHWAYS PROJECT IMPLEMENTATION

**PRINTED BY THE AUTHORITY
OF THE STATE OF ILLINOIS**



FULL SIZE PLANS HAVE BEEN PREPARED USING STANDARD ENGINEERING SCALES. REDUCED SIZED PLANS WILL NOT CONFORM TO STANDARD SCALES. IN MAKING MEASUREMENTS ON REDUCED PLANS, THE ABOVE SCALES MAY BE USED.

J.U.L.I.E.
JOINT UTILITY LOCATION INFORMATION FOR EXCAVATION
1-800-892-0123
OR 811

PROJECT ENGINEER: JOE KANNEL, P.E.
UNIT CHIEF: MARC BUDZYNSKI, P.E.
DISTRICT 3 NO. (815) 434-6131
CONTRACT NO. 66K18

GROSS LENGTH = 31,139 FT. = 5.90 MILES
NET LENGTH = 29,431 FT. = 5.57 MILES

GENERAL NOTES

THE HMA SURFACE OF ALL MAILBOX TURNOUTS, PRIVATE ENTRANCES, COMMERCIAL ENTRANCES, AND SIDE ROADS SHALL BE MADE NEATLY, IN A WORKMANLIKE MANNER, AND SHALL ACCURATELY CONFORM TO THE SHAPES AND DIMENSIONS SHOWN ON THE PLAN DETAILS. IF REQUIRED BY THE ENGINEER, THE CONTRACTOR SHALL SAW CUT THE HMA SURFACE TO CONFORM TO THE SHAPES AND DIMENSIONS SHOWN ON THE PLAN DETAILS. THIS WORK WILL BE INCLUDED IN THE COST OF THE HMA SURFACE.

ABANDONED UNDERGROUND UTILITIES THAT CONFLICT WITH CONSTRUCTION SHALL BE DISPOSED OF OUTSIDE THE LIMITS OF THE RIGHT OF WAY ACCORDING TO ARTICLE 202.03 OF THE STANDARD SPECIFICATIONS AND AS DIRECTED BY THE ENGINEER. THIS WORK WILL NOT BE PAID FOR SEPARATELY, BUT WILL BE INCLUDED IN THE COST OF EARTH EXCAVATION.

THE FOLLOWING RATES OF APPLICATION HAVE BEEN USED IN CALCULATING PLAN QUANTITIES:

HMA RESURFACING	112	LBS / SQ YD / IN
-----------------	-----	------------------

ALL DAMAGE TO DEPARTMENT OWNED UNDERGROUND FACILITIES, CAUSED BY THE CONTRACTOR SHALL BE REPAIRED TO THE SATISFACTION OF THE DEPARTMENT AT THE CONTRACTOR'S EXPENSE. THIS SHALL INCLUDE ALL TEMPORARY REPAIRS REQUIRED TO KEEP THE FACILITY OPERATIONAL WHILE MATERIAL IS BEING OBTAINED TO MAKE PERMANENT REPAIRS. SPLICING OF ELECTRIC CABLE WILL NOT BE ALLOWED. ELECTRIC CABLE SHALL BE REPLACED FROM POLE TO POLE OR CONTROLLER.

THE CONTRACTOR SHALL CONTACT JULIE AT LEAST 48 HOURS PRIOR TO EXCAVATION TO DETERMINE WHICH UTILITIES ARE IN THE AREA.

COMMITMENTS:

HMA MIXTURE REQUIREMENT TABLE		
LOCATION(S) :	ENTIRE PROJECT	ENTIRE PROJECT
MIXTURE USE(S) :	SHOULDER BOTTOM LIFT(S)	SHOULDER TOP LIFT (2")
BINDER GRADE (PG) :	PG 64-22	PG 64-22
DESIGN AIR VOIDS :	4.0% @ N50	4.0% @ N50
MIXTURE COMPOSITION: (MIXTURE GRADATION)	IL-19.0	IL-9.5 FG
FRICITION AGGREGATE :	-	-
MIXTURE WEIGHT :	112.0 LB/SY/IN	112.0 LB/SY/IN
QUALITY MANAGEMENT PROGRAM:	QC/QA	QC/QA
SUBLOT SIZE :	N/A	N/A
DENSITY TEST METHOD :	CORES/NUCLEAR	CORES/NUCLEAR

STATE OF ILLINOIS
DEPARTMENT OF TRANSPORTATION
DISTRICT THREE
AS BUILT INFORMATION

SUPERVISING CONSTRUCTION FIELD ENGINEER

RESIDENT ENGINEER / TECHNICIAN

START & END DATES
OF CONSTRUCTION:

INSPECTORS:

STATE OF ILLINOIS
DEPARTMENT OF TRANSPORTATION
DISTRICT THREE

PREPARED BY: _____
DISTRICT STUDIES & PLANS ENGINEER

DATE: _____

EXAMINED BY: _____
DISTRICT CONSTRUCTION ENGINEER

DISTRICT MATERIALS ENGINEER

DISTRICT OPERATIONS ENGINEER

MODEL: \\MODELM\MAILS
FILE: \\MAILS\c:\p\work\66k18\budz\miskim\061313\03066k18-plr-cover.dgn

USER NAME = budzyskim	DESIGNED -	REVISED -
	DRAWN -	REVISED -
PLOT SCALE = 100,0000 ' / in.	CHECKED -	REVISED -
PLOT DATE = 6/27/2021	DATE -	REVISED -

**STATE OF ILLINOIS
DEPARTMENT OF TRANSPORTATION**

GENERAL NOTES

SCALE: SHEET OF SHEETS STA. TO STA.

F.A.S. RTE.	SECTION	COUNTY	TOTAL SHEETS	SHEET NO.
310	(10) SFY. Y	KANKAKEE	9	2
CONTRACT NO. 66K18			ILLINOIS FED. AID PROJECT	

CODE NO.	ITEM	UNIT	TOTAL QUANTITY	CONSTR. CODE	
				90% FED 10% STATE	
				SAFETY	
				0021	
				RURAL	
40600290	BITUMINOUS MATERIALS (TACK COAT)	POUND	12023		12023
40800050	INCIDENTAL HOT-MIX ASPHALT SURFACING	TON	23.2		23.2
44000157	HOT-MIX ASPHALT SURFACE REMOVAL, 2"	SQ YD	198.2		198.2
48203029	HOT-MIX ASPHALT SHOULDERS, 8"	SQ YD	26481		26481
64200108	SHOULDER RUMBLE STRIPS, 8 INCH	FOOT	59678		59678
* 66900200	NON-SPECIAL WASTE DISPOSAL	CU YD	90		90
* 66900530	SOIL DISPOSAL ANALYSIS	EACH	2		2
* 66901001	REGULATED SUBSTANCES PRE-CONSTRUCTION PLAN	L SUM	1.0		1.0
* 66901003	REGULATED SUBSTANCES FINAL CONSTRUCTION REPORT	L SUM	1.0		1.0
* 66901006	REGULATED SUBSTANCES MONITORING	CAL DA	4		4
67100100	MOBILIZATION	L SUM	1.0		1.0
70100500	TRAFFIC CONTROL AND PROTECTION, STANDARD 701326	L SUM	1.0		1.0
70103815	TRAFFIC CONTROL SURVEILLANCE	CAL DA	5		5
70107025	CHANGEABLE MESSAGE SIGN	CAL DA	45		45

*= SPECIALTY ITEM

MODEL: \\MODELM\A\FILES
FILE: \\MODELM\A\FILES\work\66k18\66k18-shl-covr.dgn

USER NAME = budzynskim	DESIGNED -	REVISED -
	DRAWN -	REVISED -
PLOT SCALE = 100.0000 ' / in.	CHECKED -	REVISED -
PLOT DATE = 6/27/2021	DATE -	REVISED -

**STATE OF ILLINOIS
DEPARTMENT OF TRANSPORTATION**

SUMMARY OF QUANTITIES

SCALE: SHEET OF SHEETS STA. TO STA.

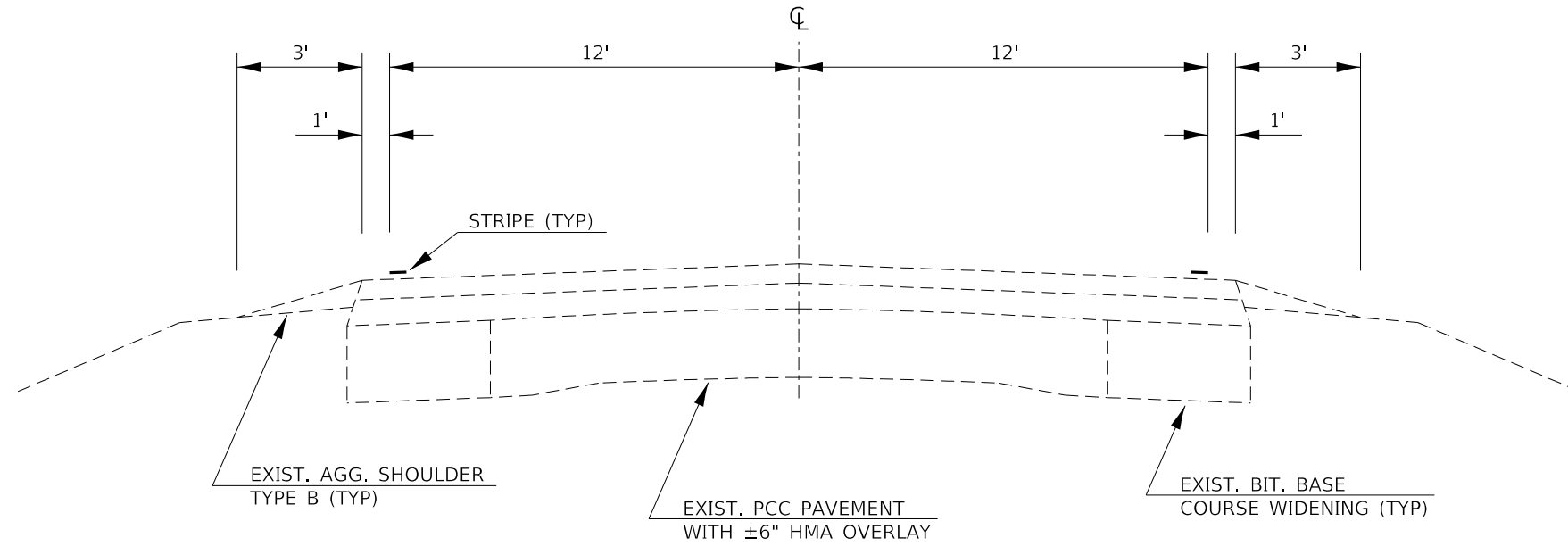
F.A.S. RTE.	SECTION	COUNTY	TOTAL SHEETS	SHEET NO.
310	(10) SFY. Y	KANKAKEE	9	3
ILLINOIS FED. AID PROJECT			CONTRACT NO. 66K18	

CODE NO.	ITEM	UNIT	TOTAL QUANTITY	CONSTR. CODE	
				90% FED 10% STATE	SAFETY 0021 RURAL
* 78001110	PAINT PAVEMENT MARKING - LINE 4"	FOOT	124044		124044
X0800001	SHOULDER REMOVAL (SPECIAL)	SQ YD	26481		26481
Z0030850	TEMPORARY INFORMATION SIGNING	SQ FT	42		42

*= SPECIALTY ITEM

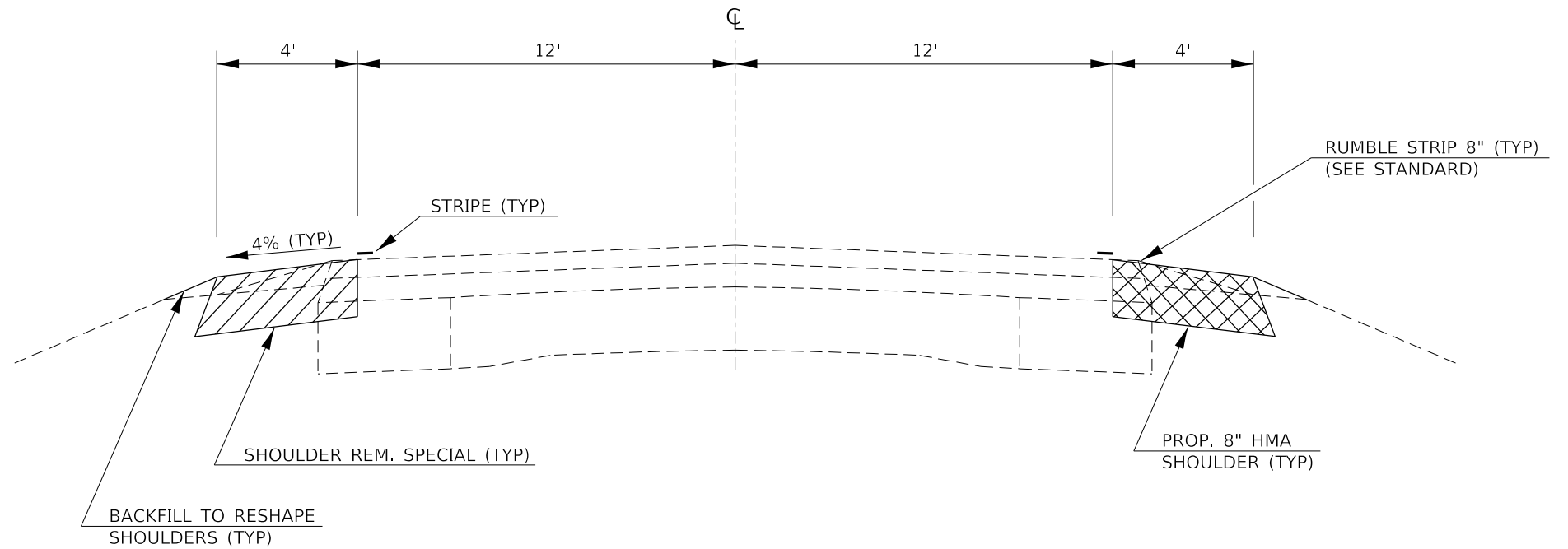
MODEL: \\MODELM\A\MTS
FILE: \\MODELM\A\MTS\work\sidejob\budzynskim\061133\0366K18-plr-cover.dgn

USER NAME = budzynskim	DESIGNED -	REVISED -	STATE OF ILLINOIS DEPARTMENT OF TRANSPORTATION	SUMMARY OF QUANTITIES			F.A.S. RTE.	SECTION	COUNTY	TOTAL SHEETS	SHEET NO.
PLOT SCALE = 100.0000' / in.	DRAWN -	REVISED -					310	(10) SFY, Y	KANKAKEE	9	4
PLOT DATE = 6/27/2021	CHECKED -	REVISED -		SCALE: SHEET OF SHEETS STA. TO STA.			CONTRACT NO. 66K18				
	DATE -	REVISED -					ILLINOIS FED. AID PROJECT				



EXISTING TYPICAL SECTION

STA 257+00 TO STA 271+85
 STA 18+42 TO STA 64+00
 STA 75+19 TO STA 210+78
 STA 210+86 TO STA 223+71
 STA 223+77 TO STA 314+77
 STA 314+95 TO STA 326+29



PROPOSED TYPICAL SECTION

STA 257+00 TO STA 271+85
 STA 18+42 TO STA 64+00
 STA 75+19 TO STA 210+78
 STA 210+86 TO STA 223+71
 STA 223+77 TO STA 314+77
 STA 314+95 TO STA 326+29

STATION EQUATIONS

STA 271+85 BK = STA 18+42 AH
 STA 64+00 BK = STA 75+19 AH
 STA 210+78 BK = STA 210+86
 STA 223+71 BK = STA 223+77
 STA 314+77 BK = STA 314+95

MODEL: \\MODELS\MAR18
 FILE: MAR18 - 310 - work\widat\budzynskim\061313\310366K18-plc-cover.dgn

USER NAME = budzynskim	DESIGNED -	REVISED -
	DRAWN -	REVISED -
PLOT SCALE = 100.0000' / in.	CHECKED -	REVISED -
PLOT DATE = 6/27/2021	DATE -	REVISED -

**STATE OF ILLINOIS
 DEPARTMENT OF TRANSPORTATION**

TYPICAL SECTIONS				
SCALE:	SHEET	OF	SHEETS	STA. TO STA.

F.A.S. RTE.	SECTION	COUNTY	TOTAL SHEETS	SHEET NO.
310	(10) SFY. Y	KANKAKEE	9	5
CONTRACT NO. 66K18				
ILLINOIS FED. AID PROJECT				

SHOULDER REMOVAL & REPLACEMENT SCHEDULE									
LOCATION			SIDE	LENGTH	SHOULDER REMOVAL (SPECIAL)	HMA SHOULDERS 8"	BIT MTLs TACK COAT	SHOULDER RUMBLE STRIPS, 8"	*PAINT PVMT MARKING WHITE 4"
STA	TO STA	STA	LT / RT	FOOT	SQ YD	SQ YD	POUND	FOOT	FOOT
IL 17/IL 1 = STA 253+52									
257+00	TO	271+85	LT & RT	1485	1320	1320	594	2970	5940
STATION EQUATION STA 271+85 BK = 18+42 AH									
18+42	TO	29+25	LT & RT	1083	963	963	434	2166	4332
28+65	TO	29+25	LT	60	54	54	24	120	240
VINCENNES TR = STA 29+25									
29+25	TO	30+05	LT	80	72	72	32	160	320
30+05	TO	64+00	LT & RT	3395	3018	3018	1358	6790	13580
STATION EQUATION STA 64+00 BK = 75+19 AH									
75+19	TO	106+26	LT & RT	3107	2762	2762	1243	6214	12428
106+26	TO	108+10	LT	184	164	164	74	368	736
STRUCTURE OMISSION SN 046-0127 = STA 110+46									
112+96	TO	114+30	LT	134	120	120	54	268	536
114+30	TO	132+04	LT & RT	1774	1577	1577	710	3548	7096
N 14500E RD = STA 132+34									
132+64	TO	172+20	LT & RT	3956	3517	3517	1583	7912	15824
172+20	TO	172+46	LT	26	24	24	11	52	104
N 15250E RD = STA 172+46									
172+46	TO	172+72	LT	26	24	24	11	52	104
172+72	TO	196+40	LT & RT	2368	2105	2105	948	4736	9472
STRUCTURE OMISSION SN 046-2503 = STA 197+72									
199+04	TO	208+52	LT & RT	948	843	843	380	1896	3792
208+52	TO	209+20	**LT & RT	68	61	61	28	136	272
EXIST STRUCTURE = STA 209+20									
209+20	TO	209+88	**LT & RT	68	61	61	28	136	272
209+88	TO	210+78	LT & RT	90	80	80	36	180	360
STATION EQUATION STA 210+78 BK = 210+86 AH									
210+86	TO	212+19	LT & RT	133	119	119	54	266	532
212+19	TO	212+29	RT	10	9	9	4	20	40
PAGE ONE SUBTOTAL				18995	16893	16893	7606	37990	78980

*QUANTITY REPRESENTS TWO SEPARATE APPLICATIONS

**WIDTH OF SHOULDER REMOVAL AND REPLACEMENT SHALL BE 4 FT WIDE OR TO THE FACE OF GUARDRAIL, WHICHEVER IS LESS.

MODEL: \\MODELS\MARIS
FILE: \\MARIS_CAD\work\shd\shdbymskim\061313\0366k18-shr-cover.dwg

USER NAME = budzynskim	DESIGNED -	REVISED -
	DRAWN -	REVISED -
PLOT SCALE = 100.0000' / in.	CHECKED -	REVISED -
PLOT DATE = 6/27/2021	DATE -	REVISED -

**STATE OF ILLINOIS
DEPARTMENT OF TRANSPORTATION**

SCHEDULES			
SCALE:	SHEET	OF	SHEETS
	STA.	TO	STA.

F.A.S. RTE.	SECTION	COUNTY	TOTAL SHEETS	SHEET NO.
310	(10) SFY. Y	KANKAKEE	9	6
CONTRACT NO. 66K18				
ILLINOIS FED. AID PROJECT				

SHOULDER REMOVAL & REPLACEMENT SCHEDULE (CONT)									
LOCATION			SIDE	LENGTH	SHOULDER REMOVAL (SPECIAL)	HMA SHOULDERS 8"	BIT MTLs TACK COAT	SHOULDER RUMBLE STRIPS, 8"	*PAINT PVMT MARKING WHITE 4"
STA	TO STA	STA	LT / RT	FOOT	SQ YD	SQ YD	POUND	FOOT	FOOT
N 16000E RD = STA 212+61									
212+83	TO	213+17	LT	34	31	31	14	68	136
213+17	TO	223+71	LT & RT	1054	937	937	422	2108	4216
STATION EQUATION									
STA 223+71 BK = 223+77 AH									
223+77	TO	241+67	LT & RT	1790	1592	1592	716	3580	7160
241+67	TO	242+35	**LT & RT	68	46	46	21	136	272
EXIST STRUCTURE = STA 242+35									
242+35	TO	243+03	**LT & RT	68	46	46	21	136	272
243+03	TO	252+85	LT & RT	982	873	873	393	1964	3928
252+85	TO	253+10	RT	25	23	23	10	50	100
N 16750E RD = STA 253+10									
253+10	TO	253+50	RT	40	36	36	16	80	160
253+50	TO	258+43	LT & RT	493	439	439	198	986	1972
258+43	TO	259+81	LT	138	123	123	56	276	552
STRUCTURE OMISSION									
SN 046-0129 = STA 261+93									
264+03	TO	264+63	RT	60	54	54	24	120	240
264+63	TO	274+62	LT & RT	999	888	888	400	1998	3996
BULL CREEK RD = STA 274+90									
275+18	TO	279+12	LT & RT	394	351	351	158	788	1576
279+12	TO	279+80	**LT & RT	68	46	46	21	136	272
EXIST STRUCTURE = STA 279+80									
279+80	TO	280+48	**LT & RT	68	46	46	21	136	272
280+48	TO	314+77	LT & RT	3429	3048	3048	1372	6858	13716
STATION EQUATION									
STA 314+77 BK = 314+95 AH									
314+95	TO	326+07	LT & RT	1112	989	989	445	2224	4448
326+07	TO	326+29	LT	22	20	20	9	44	88
STATELINE RD = STA 326+47									
PAGE TWO SUBTOTAL				10844	9588	9588	4317	21688	45064
TOTAL				29839	26481	26481	11923	59678	124044

*QUANTITY REPRESENTS TWO SEPARATE APPLICATIONS

**WIDTH OF SHOULDER REMOVAL AND REPLACEMENT SHALL BE 4 FT WIDE OR TO THE FACE OF GUARDRAIL, WHICHEVER IS LESS.

MODEL: \\MODELS\MJH\FILES
FILE: \\MODELS\COPY\WORKSPACE\budzynskim\061133\0366K18-shl-cover.dgn

USER NAME = budzynskim	DESIGNED -	REVISED -
	DRAWN -	REVISED -
PLOT SCALE = 100,0000' / in.	CHECKED -	REVISED -
PLOT DATE = 6/27/2021	DATE -	REVISED -

**STATE OF ILLINOIS
DEPARTMENT OF TRANSPORTATION**

SCHEDULES	
SCALE:	SHEET OF SHEETS STA. TO STA.

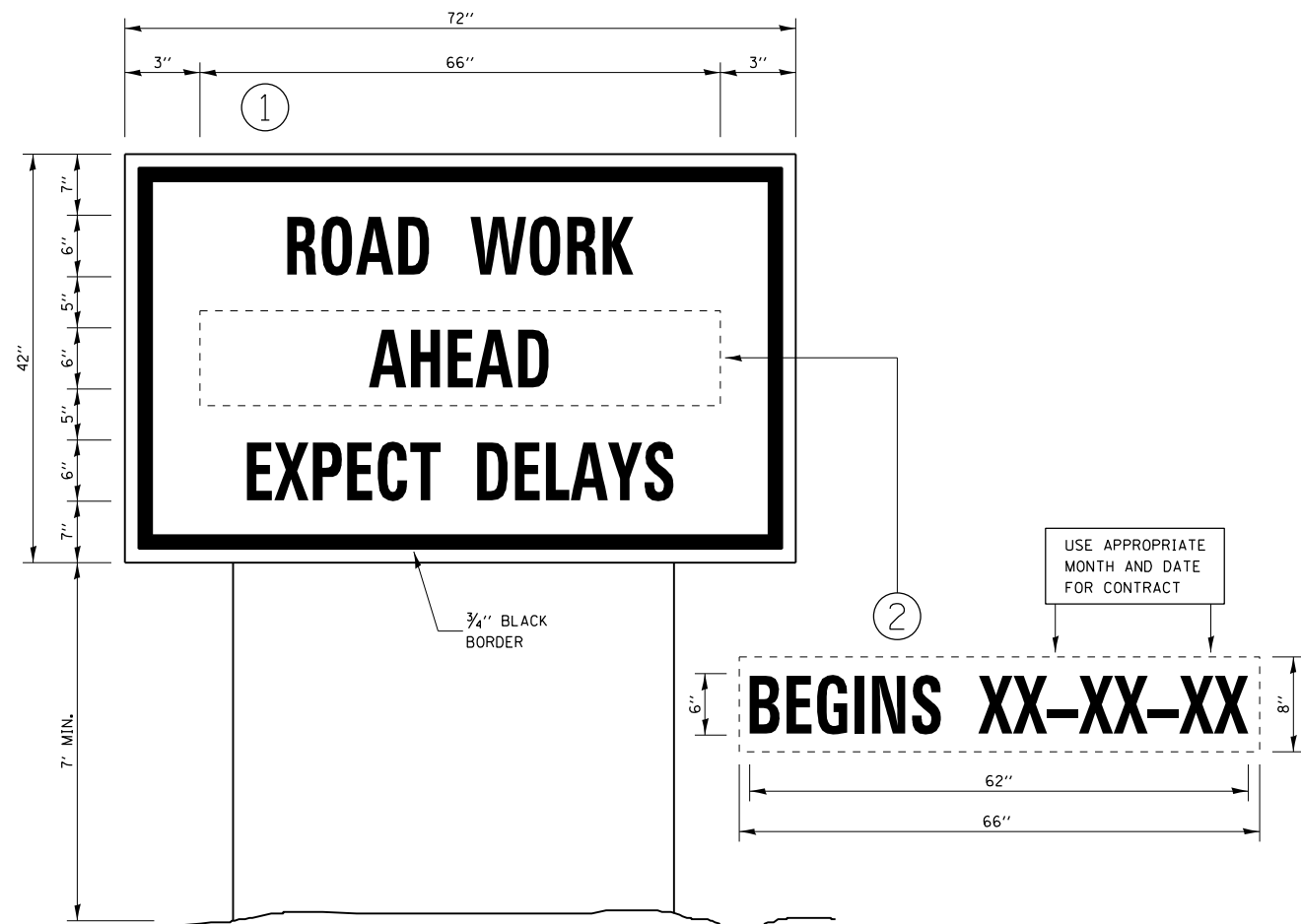
F.A.S. RTE.	SECTION	COUNTY	TOTAL SHEETS	SHEET NO.
310	(10) SFY. Y	KANKAKEE	9	7
CONTRACT NO. 66K18				
ILLINOIS FED. AID PROJECT				

MAILBOX TURNOUT SCHEDULE				
STA / SIDE		HMA SURF REMOVAL 2"	INCIDENTAL HMA SURF 2"	BIT MTLs TACK COAT
		SQ YD	TON	POUND
53+00	RT	7.9	0.9	4
81+24	RT	2.7	0.4	2
89+96	RT	6.8	0.8	4
100+93	RT	3.5	0.4	2
112+94	RT	NO WORK	-	-
118+24	RT	11.4	1.3	6
134+50	RT	7.3	0.9	4
143+40	RT	8.5	1.0	4
158+02	RT	5.4	0.7	3
164+31	RT	13.2	1.5	6
177+55	RT	7.8	0.9	4
186+06	RT	14.2	1.6	7
189+00	RT	9.3	1.1	5
218+34	RT	5.7	0.7	3
226+57	RT	7.8	0.9	4
230+74	RT	8.6	1.0	4
231+81	RT	8.7	1.0	4
252+35	RT	11.9	1.4	6
255+04	RT	8.8	1.0	4
258+86	RT	NO WORK	-	-
264+25	RT	3.8	0.5	2
308+21	RT	14.7	1.7	7
313+39	RT	8.5	1.0	4
322+03	RT	9.8	1.1	5
324+37	RT	11.9	1.4	6
TOTAL		198.2	23.2	100

THE FIRST 4 FEET OF THE MBTO ADJACENT TO THE TRAVELED WAY IS PAID AS SHOULDER REMOVAL (SPECIAL) AND HMA SHOULDERS 8". THE REMAINING AREA OF THE MBTO IS PAID AS HMA SURFACE REMOVAL 2" AND INCIDENTAL HMA SURFACE 2".

SURVEY MONUMENT TABLE					
GPS NUMBER	DESCRIPTION	EXISTING MONUMENT TYPE	PROPOSED MONUMENT TYPE	MONUMENT RECORD TO BE RECORDED	RESPONSIBILITY
N/A	NO CENTERLINE CONTROL OR SECTION CORNER PERMANENT SURVEY MARKERS TO BE SET	N/A	N/A	N/A	N/A
<p>ALL KNOWN PERMANENT SURVEY MARKERS OR LAND SURVEY MONUMENTS ARE LOCATED ON THE ROAD SURFACE AND WILL NOT BE DISTURBED BY SHOULDER WIDENING AND RUMBLE STRIP WORK. UNKNOWN MONUMENTS MAY EXIST, AND IF FOUND THE R.E. MUST TIE THEM AND REQUEST PLATS AND PLANS PERSONNEL TO ANALYZE AND GPS ANY MONUMENT SUBJECT TO DAMAGE OR DESTRUCTION FROM THE PROPOSED WORK, AND INFORM THEM TO RESET THOSE MONUMENTS UPON JOB COMPLETION. THE R.E. IS TO INFORM THE PLATS AND PLANS SECTION TO SEARCH FOR ADDITIONAL MONUMENTS IF THE JOB LIMITS ARE EXPANDED DURING CONSTRUCTION. NO MONUMENT RECORDS WILL BE REQUIRED FOR THIS JOB.</p>					

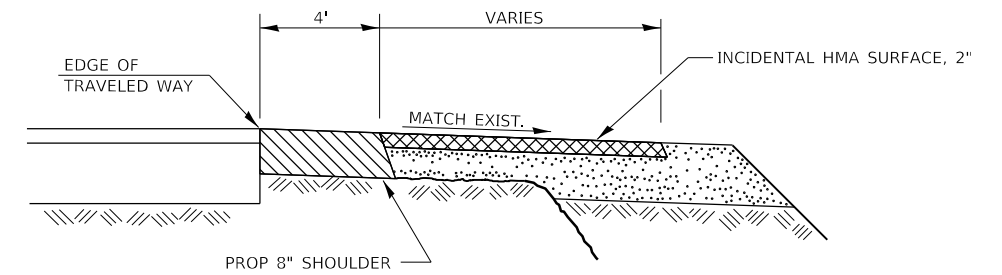
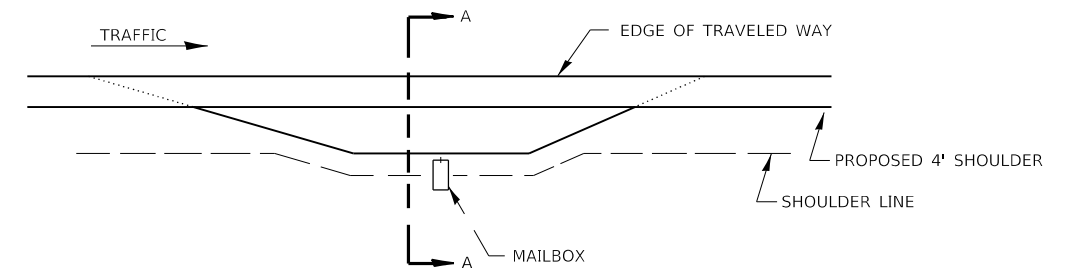
MODEL: \\MODELS\MJMTS
 FILE: \\MAILS_CAD\work\sidejob\budzynskim\061313\03066K18-shr-cover.dwg



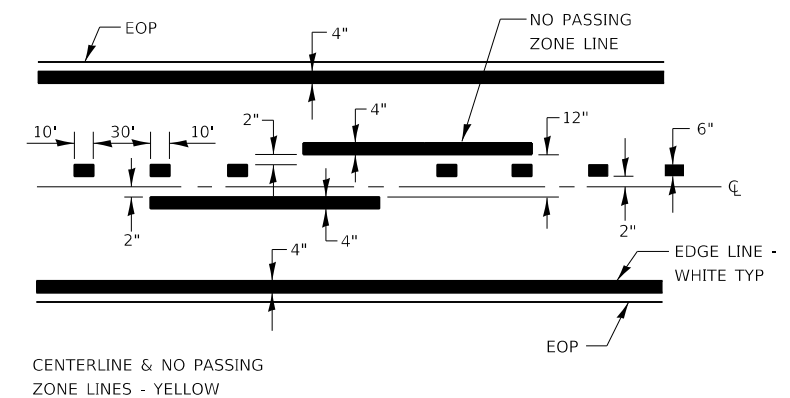
TEMPORARY INFORMATION SIGNING

NOTES:

1. USE 6" D BLACK LETTERING ON FLOURESENT ORANGE BACKGROUND.
2. ERECT SIGNS AT LOCATIONS IN ADVANCE OF THE "ROAD CONSTRUCTION AHEAD" SIGNS AS DIRECTED BY THE ENGINEER.
3. ERECT SIGN ① WITH INSTALLED PANEL ② A MINIMUM OF ONE WEEK PRIOR TO THE START OF THE LANE CLOSURE.
4. REMOVE PANEL ② ON THAT DATE.
5. SEE SPECIAL PROVISION "TEMPORARY INFORMATION SIGNING" FOR ADDITIONAL INFORMATION.
6. WILL BE PAID FOR PER SQ FT AS "TEMPORARY INFORMATION SIGNING". EACH SIGN = 21 SQ FT AND THE DATE PANEL ② WILL NOT BE MEASURED SEPARATELY FOR PAYMENT.



**SECTION A-A
RURAL MAILBOX TURNOUT DETAILS**



CENTERLINE & NO PASSING ZONE LINES - YELLOW

PAVEMENT MARKING

MODEL: 440DEI.MAINTS
FILE: 440de_i_csbp_workestdat1budzysniskim00613133D386K18-plb-rlc-cover.dgn

USER NAME = budzysniskim	DESIGNED -	REVISED -
PLOT SCALE = 100.0000' / in.	DRAWN -	REVISED -
PLOT DATE = 6/27/2021	CHECKED -	REVISED -
	DATE -	REVISED -

**STATE OF ILLINOIS
DEPARTMENT OF TRANSPORTATION**

SCALE:		SHEET OF SHEETS		STA. TO STA.	
		DETAILS			

F.A.S. RTE.	SECTION	COUNTY	TOTAL SHEETS	SHEET NO.
310	(10) SFY. Y	KANKAKEE	9	9
CONTRACT NO. 66K18				
ILLINOIS FED. AID PROJECT				