

INDEX OF SHEETS

Sheet No.	Title	Page
1	Plan and Profile	51a. 228+54 to 256+70 (F.A.R. 26), Typical Cross Section
3	"	" -11+00 to 11+00 (Aroma Park Rd.) Typical Cross Section
4	"	" 11+00 to 26+00 (" ")
5	"	" 26+00 to 29+50 (" ")
6 to 15	Special Bridge Design	51a. 230+53.99 (Sheets 1 to 10 of 10)
16 to 27	Cross Sections	"
28	Special Culvert Design	51a. 4+00 (on Relocated Side Road)
28	Standard	1882, 1973
29	"	1514, 1516R
30	"	1530R, 1971S, 1972

STATE OF ILLINOIS
 DEPARTMENT OF PUBLIC WORKS AND BUILDINGS
 DIVISION OF HIGHWAYS
**PLANS FOR PROPOSED
 FEDERAL AID HIGHWAY**

SCALES

PLAN	1 INCH	100 FT.
PROFILE, HOR.	1 INCH	100 FT.
PROFILE, VERT.	1 INCH	10 FT.
CROSS-SECTIONS	1 INCH	5 FT.

F.A. ROUTE 26, SECTION 139HB-1, 139HF-1, KANKAKEE COUNTY
 PROJECT UI-29(9)

**FOR INFORMATION
 ONLY**

ROUTE NO.	SEC.	COUNTY	TOTAL SHEETS	SHEET NO.
26	139HB-1	KANKAKEE	30	1

FED. ROAD DIST. NO. 7 ILLINOIS PROJECT UI-29(9)



LOCATION OF SECTION INDICATED THIS:—

SUMMARY OF QUANTITIES

SECTION 139HB-1	
34014	Cu. Yds. Earth Excavation
37	Cu. Yds. Rock Excavation for Structures
54	Lin. Ft. Pipe Culverts, Type 1 15"
92	Lin. Ft. Pipe Culverts, Type 2 15"
52	Lin. Ft. Pipe Culverts, Type 1 18"
80	Lin. Ft. Pipe Culverts, Type 2 18"
713	Lin. Ft. Storm Sewers, Type 2 12"
4.3	Cu. Yds. Handrail Concrete
605.1	Cu. Yds. Class X Concrete
70690	Pounds Reinforcement Bars
195990	Pounds Structural Steel
1	Each Name Plate
423	Lin. Ft. Metal Handrail
220	Inch Dia. Tree Removal-Inch Diameter (6" to 15" diameter)
40	Inch Dia. Tree Removal-Inch Diameter (over 15" diameter)
1	Each Catch Basins, Type C with Type B Grate
2	Each Catch Basins, Type A with Type B Grate
1925	Tons Gravel or Crushed Stone Base Course
106	Tons Cover Coat Aggregate
50	Tons Seal Coat Aggregate
1870	Gals. Bituminous Materials (Prime Coat)
3860	Gals. Bituminous Materials (Cover and Seal Coats)
730	Cu. Yds. Class A Excavation for Structures
SECTION 139HF-1	
195990	Pounds Structural Steel
423	Lin. Ft. Metal Handrail



LAYOUT
 Approximate Scale - 1 Inch = 1 Mile

SECTION 139HB-1 includes the construction of a steel I-beam grade separation structure and gravel approaches carrying Aroma Park Road over F.A. Rt. 26, spans, 2 @ 50'-7" and 2 @ 63'-3" at Sta. 230+53.99, a point near the center of the 5.E.1/4 of Sec. 4, T. 30 N., R. 13 W. of the 2nd P.M., with the exception of furnishing and fabricating the structural steel and metal handrail, furnishing and applying the shop coat of paint and delivery of the structural steel and metal handrail f.o.b. the unloading point at railroad siding east of Kankakee.

SECTION 139HF-1 includes furnishing and fabricating the structural steel and metal handrail, furnishing and applying the shop coat of paint and delivery of the structural steel and metal handrail f.o.b. the unloading point at railroad siding east of Kankakee, for a steel I-beam grade separation structure (carrying Aroma Park Road over F.A. Rt. 26), spans, 2 @ 50'-7" and 2 @ 63'-3" at Sta. 230+53.99, a point near the center of the 5.E.1/4 of Sec. 4, T. 30 N., R. 13 W. of the 2nd P.M.

Section 139HB-1 includes Grading on F.A. Rt. 26 Sta. 228+54 to 256+70
 Section 139HF-1 includes Gravel or Cr. Stone Base Course on Aroma Park Road, Sta. 13+00 to 29+50

STATE OF ILLINOIS
 DEPARTMENT OF PUBLIC WORKS AND BUILDINGS
 DIVISION OF HIGHWAYS

SUBMITTED: 10-14-52

EXAMINED: 10-14-52

PASSED: 10-14-52

APPROVED: 10-14-52

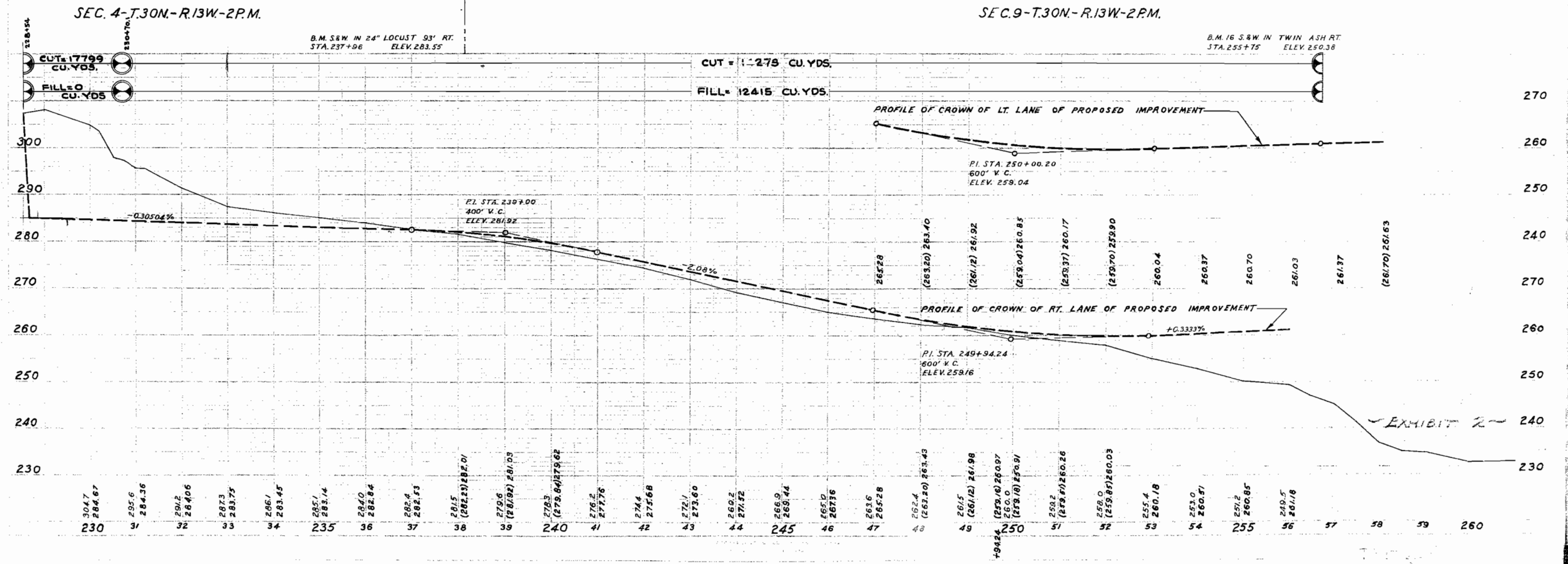
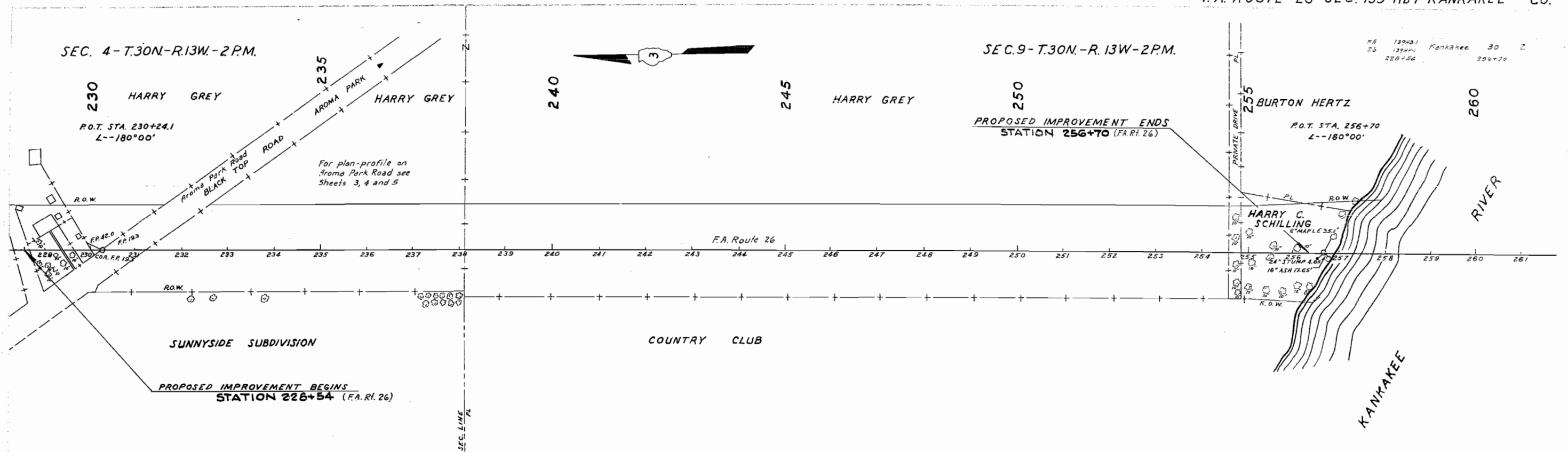
APPROVED: 10-14-52

RECOMMENDED FOR APPROVAL DATE

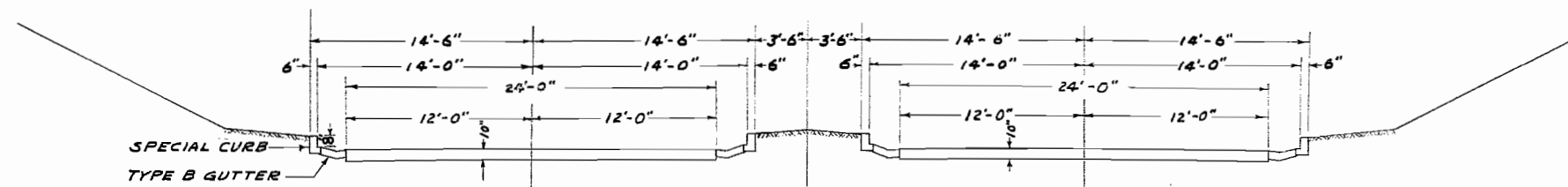
DISTRICT ENGINEER
 BUREAU OF PUBLIC ROADS
 U. S. DEPARTMENT OF COMMERCE

APPROVED DATE

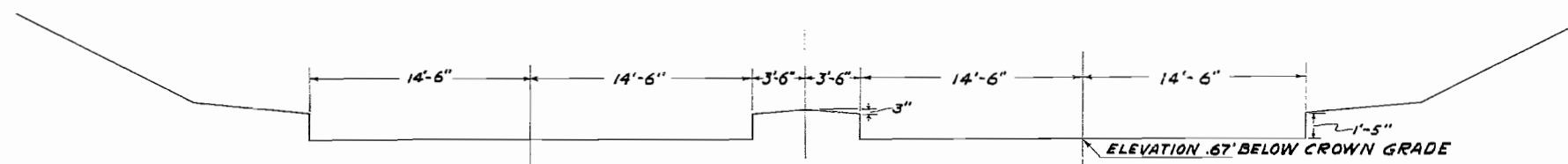
DIVISION ENGINEER
 BUREAU OF PUBLIC ROADS
 U. S. DEPARTMENT OF COMMERCE



PROPOSED ULTIMATE CROSS SECTION SHOWING FUTURE PAVEMENT, GUTTER AND CURB.

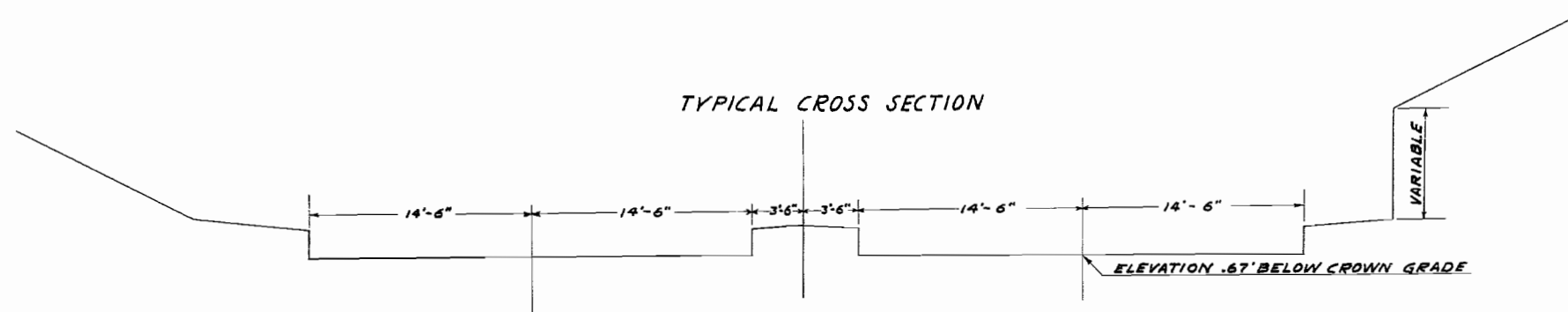


TYPICAL CROSS SECTION



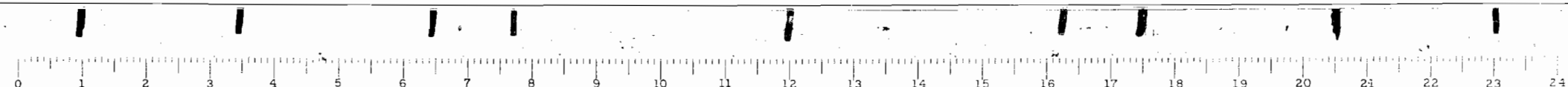
STATION 228 + 68 TO STATION 228 + 77.9
STATION 230 + 53.33 TO STATION 233 + 00

TYPICAL CROSS SECTION



STATION 228 + 77.9 TO STATION 230 + 53.33

FROM STATION 233+00 TO STATION 256+70 THE TYPICAL CROSS SECTION IS A DITCH TO DRAIN SUBWAY AS SHOWN ON CROSS SECTIONS.

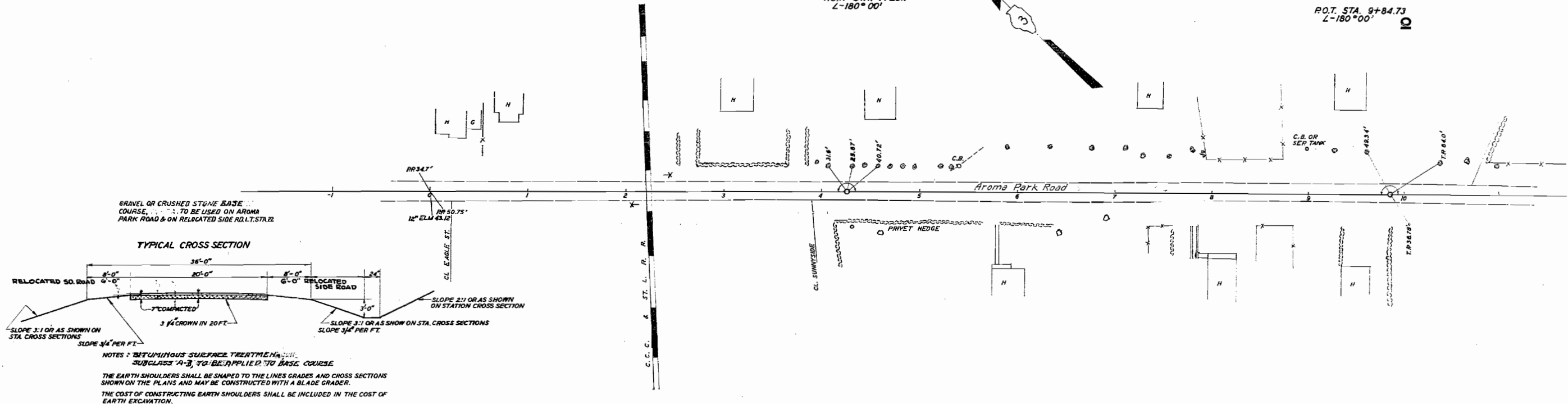


SEC. 4-T.30N-R.13W-2PM.

3149-1 Kankakee 30
26 187-111
-1+00: 11+00

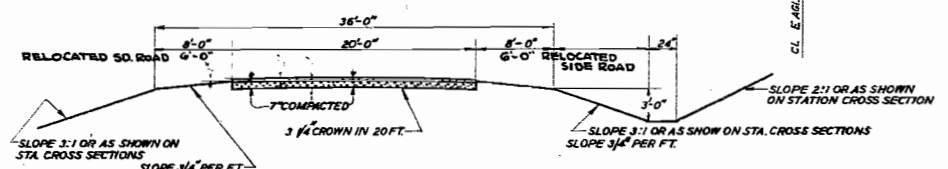
R.O.T. STA. 4+25.7
L-180°00'

R.O.T. STA. 9+84.73
L-180°00'



GRAVEL OR CRUSHED STONE BASE COURSE TO BE USED ON AROMA PARK ROAD & ON RELOCATED SIDE R.O.T. STA. 22

TYPICAL CROSS SECTION



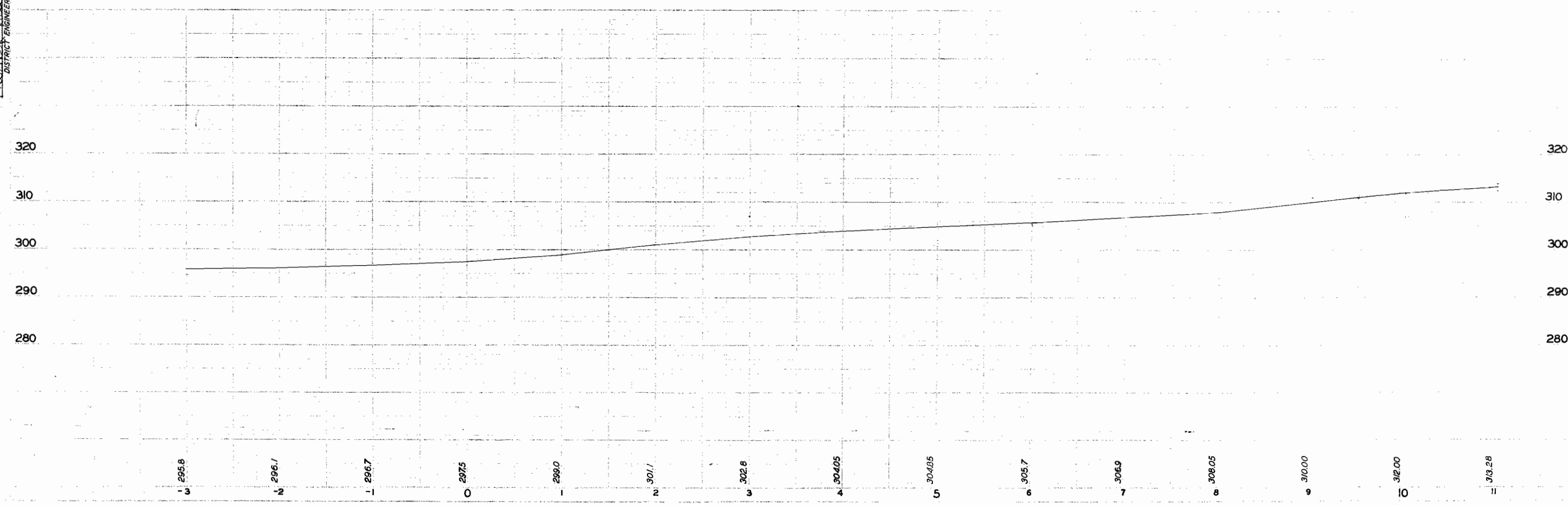
NOTES: BITUMINOUS SURFACE TREATMENT, SUBCLASS A-3, TO BE APPLIED TO BASE COURSE
THE EARTH SHOULDERS SHALL BE SHAPED TO THE LINE GRADES AND CROSS SECTIONS SHOWN ON THE PLANS AND MAY BE CONSTRUCTED WITH A BLADE GRADER.
THE COST OF CONSTRUCTING EARTH SHOULDERS SHALL BE INCLUDED IN THE COST OF EARTH EXCAVATION.

SEC. 4-T.30N-R.13W-2PM.

B.M.S.&W. IN T.P. 27' LT. STA. -0+18
ELEV. 297.99

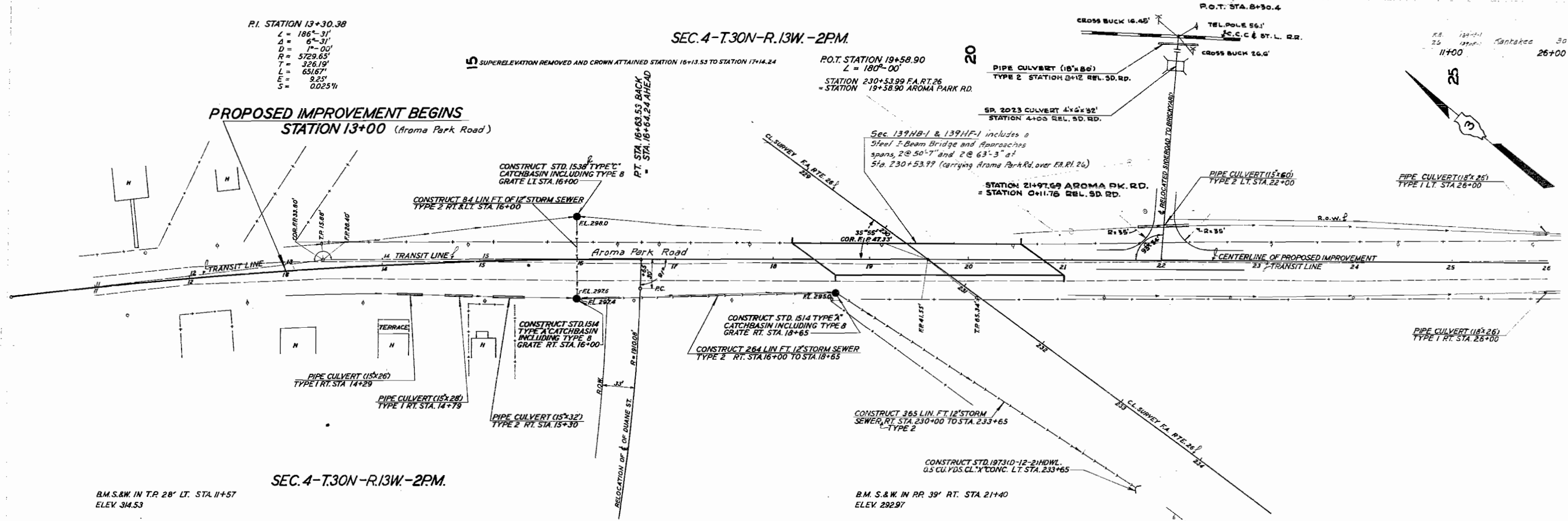
B.M.S.&W. IN T.P. 29' LT. STA. 3+44
ELEV. 306.76

ENTIRE SECTION INSPECTED AND APPROVED AS TO POLICY
DISTRICT ENGINEER



1 295.8
2 296.1
3 296.7
4 297.5
5 299.0
6 301.1
7 302.8
8 304.05
9 304.85
10 305.7
11 306.9
12 308.05
13 310.00
14 312.00
15 313.28

Aroma Park Road



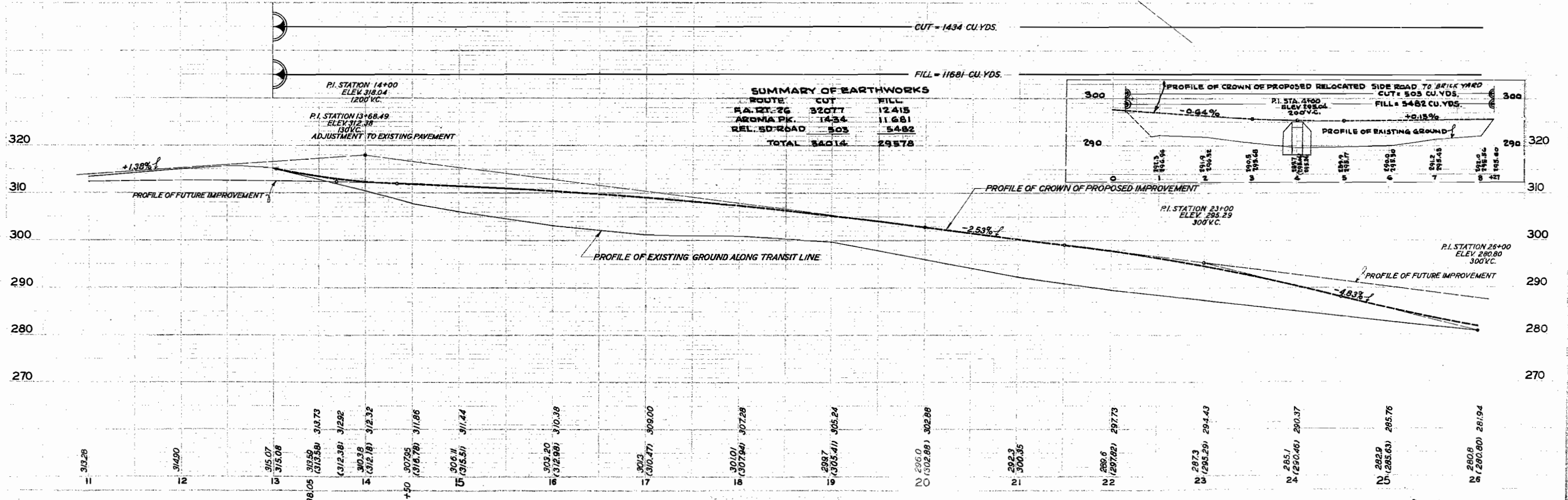
SEC. 4-T.30N-R.13W-2PM

P.O.T. STATION 19+58.90
 L = 180'-00"
 STATION 230+53.99 FA. RT. 26
 = STATION 19+58.90 AROMA PARK RD.

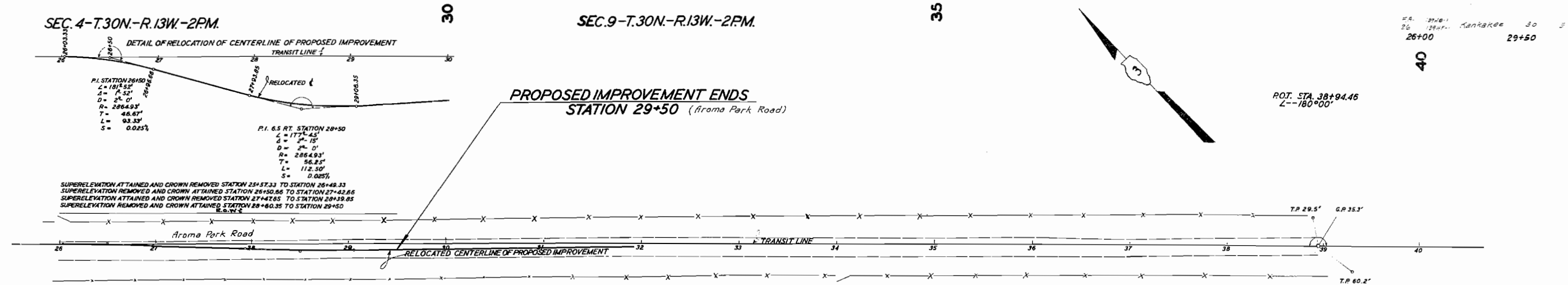
Sec. 139HB-1 & 139HF-1 includes a
 Steel I-Beam Bridge and Approaches
 spans, 2 @ 50'-7" and 2 @ 63'-3" at
 Sta. 230+53.99 (carrying Aroma Park Rd. over FA.Rt. 26)

SUMMARY OF EARTHWORKS

ROUTE	CUT	FILL
FA. RT. 26	32077	12415
AROMA PK.	1434	11681
REL. SD. ROAD	503	5482
TOTAL	34014	29578



B.M. S.&W. IN RR 39' RT. STA. 21+40
 ELEV. 292.97



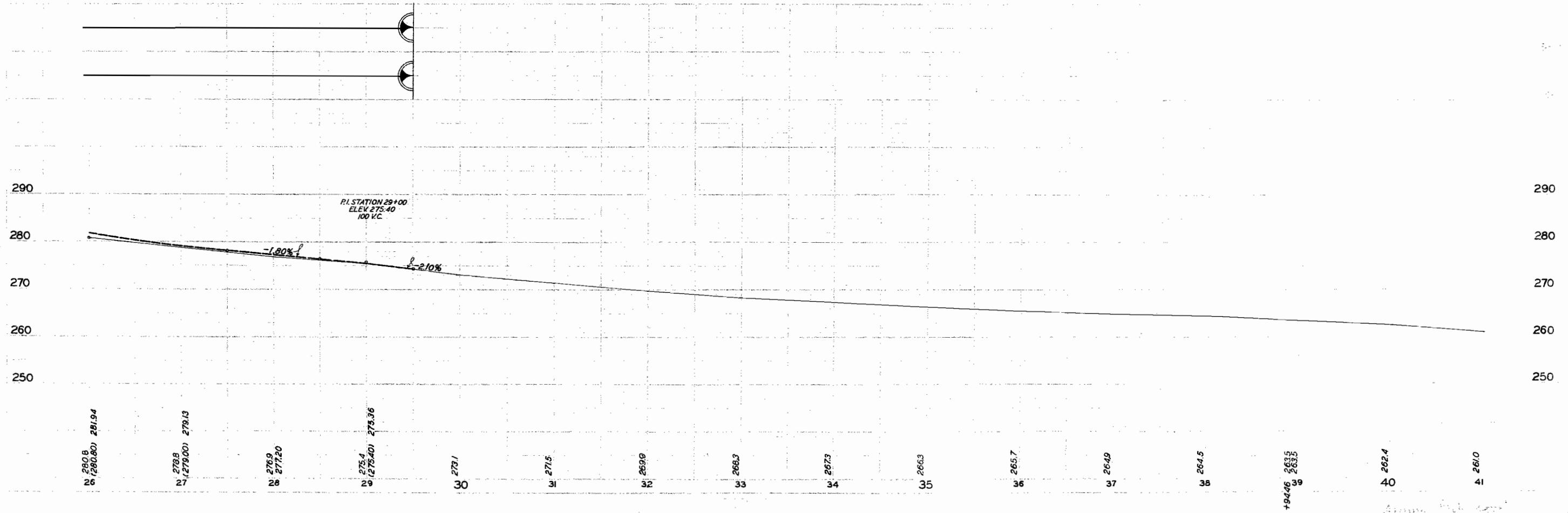
SEC. 4-T.30N-R.13W-2PM.

B.M. S.&W. IN RR 36' RT. STA. 26+55
 ELEV. 261.73

SEC. 9-T.30N-R.13W-2PM.

B.M. S.&W. IN RR 32' RT. STA. 31+77
 ELEV. 270.98

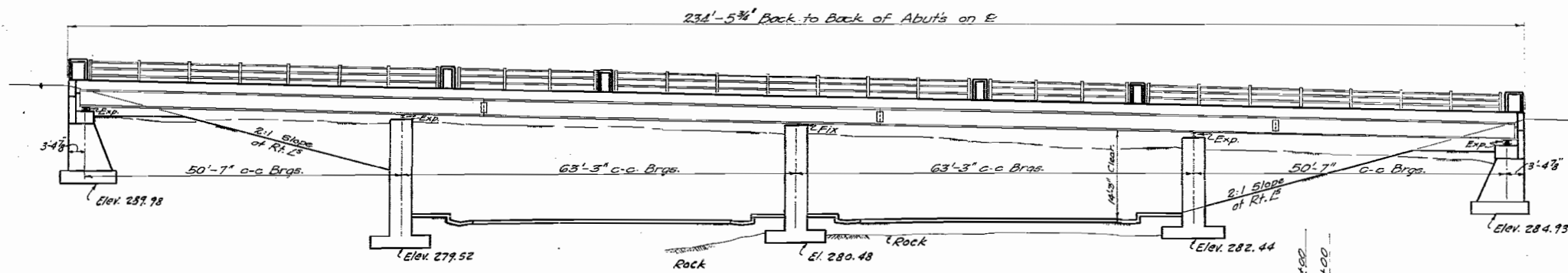
B.M. S.&W. IN RR 28' RT. STA. 38+23
 ELEV. 264.41



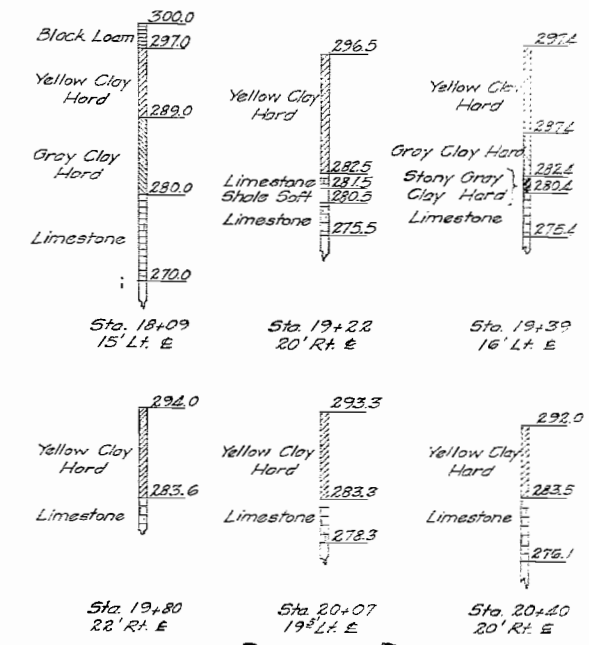
B.M. S.F.M. in 24" Locust 93' Rt.
Sta. 237+96 El. 283.55

STATE OF ILLINOIS
DEPARTMENT OF PUBLIC WORKS & BUILDINGS
DIVISION OF HIGHWAYS

MANAGEMENT PROJECT NO.	SECTION 139-HB-1	COUNTY Kankakee	TOTAL SHEETS 30	SHEET NO. 6	SHEET NO. / 10 SHEETS
F.A. 26					
FED. ROAD DIST. NO. 7 ILLINOIS					

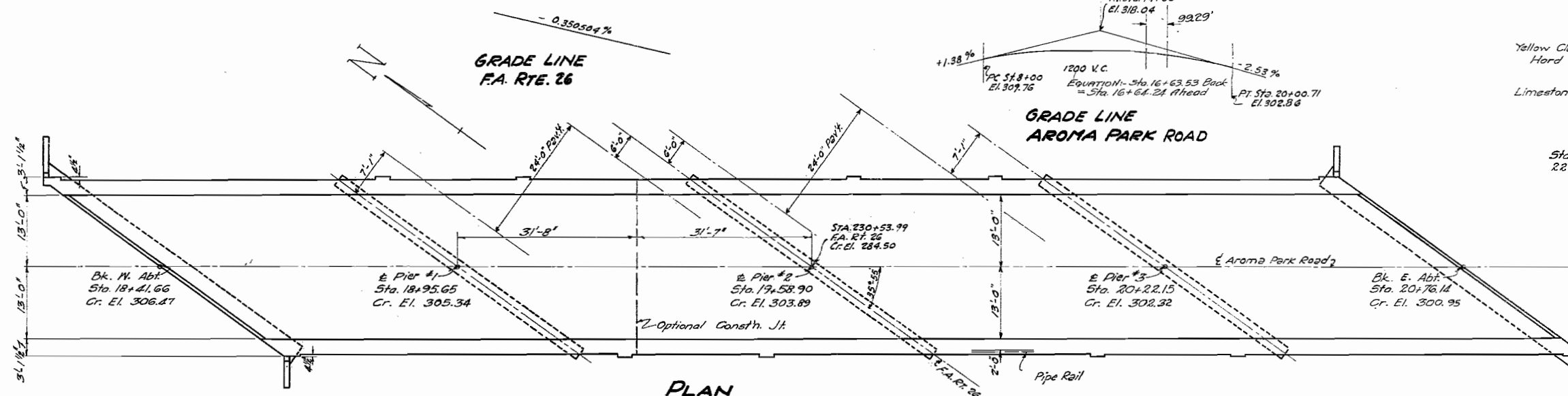


ELEVATION



BORING DATA

Note: Boring data is given only as a guide to bidders in estimating soil conditions which may be encountered in the work.



PLAN
Scale: 1" = 10'-0"

GENERAL NOTES

Class X Concrete shall be used throughout except in concrete rail piers which shall be constructed of Handrail Concrete.

The concrete floor slab shall be poured in one continuous operation or in two operations with one construction joint as shown, and shall be finished in accordance with Art. 51.18 of the Standard Specifications.

Metal Handrail shall be adjusted to true alignment and grade after slab and curbs have been poured. Posts shall be vertical.

Metal Handrail and Structural Steel shall receive one shop coat of Red lead paint (Section F) and two field coats of Aluminum Paint (Section B). All paint shall be furnished and applied by the contractor involved.

Structural Steel and Metal Handrail shall be inspected by Illinois Division of Highways before painting.

All Rollers, Rockers, Bearing R's and Anchors/bolts shall be furnished, painted and set in accordance with Art. 55.4(m) and 55.8(f) of the Std. Specs. and are included for payment as Structural Steel.

Rivets 3/4" ø, holes 3/4" unless otherwise noted. All connections shall be riveted.

All Splices for stringers shall have rivet holes punched 1/16" and reamed to required size with all stringers assembled in shop in their proper positions with or without diaphragms in place. Leave assembled for shop inspection.

Before superstructure is placed, the Contractor (Sec. 139 HB.1) shall construct embankment as shown and in accordance with Section 16 of Std. Specs.

All Exposed Edges of concrete shall be chamfered 3/4" except as noted.

See Sheets #9 & #10 for Retaining Wall details.

STATION 230+53.99
BUILT 195- BY
STATE OF ILLINOIS
F.A. RT. 26 SEC. 139-HB-1 HF-1
F.A. PROJ. UI-29 (9)
LOADING H-20-516

Name Plate See Std 1882
LETTERING FOR
NAME PLATE

Stresses
fs = 20,000 % (Rein)
fs = 18,000 % (Structural)
fc = 1,200 % (Super)
fc = 800 % (Sub)
n = 10
Loading H-20-516

TOTAL BILL OF MATERIAL

ITEM	SUPER	SUB	TOTAL	
			Sec B	Sec F
Class X Concrete Cu Yds.	203.7	370.2	573.9	
Handrail Concrete Cu Yds.	4.3		4.3	
Reinforcement Bars Lbs.	51380	28030	67910	
Structural Steel Lbs.	175000	290	175990	175990
Metal Handrail Lin. Ft.	423		423	423
Name Plate Each	1		1	
Class 'A' Excavation for Struct. Cu Yds.		730		730
Rock Excavation for Struct. Cu Yds.		370		370

* Estimated Wt. of Rockers, Rollers, Bearing R's, Lead R's and Anchor Bolts. 7480 lbs. included in Bill of Mat'l. as Structural Steel.

AROMA PARK ROAD OVER F.A. RTE 26
PROJECT UI 29(9)
F.A. RTE 26 - SEC. 139-HB-1-HF-1
KANKAKEE CO.
STA. 230+53.99

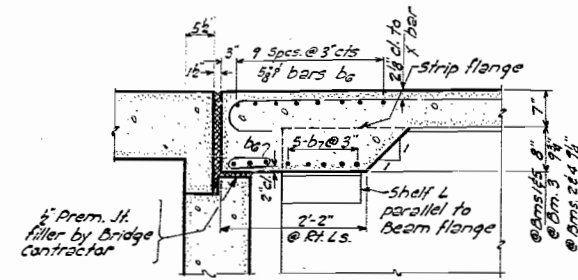
COMPUTED *Samuel G. Jones*
CHECKED *Henry P. Graham*
DRAWN *C.E. Thurman Jr. NCE*
CHECKED *H.P.H.*

EXAMINED 2-9-1949
H.J. Beard
PASSED *[Signature]*
APPROVED *C.M. Hathaway*

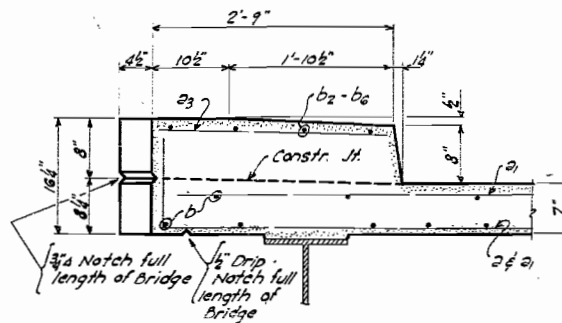
3/17/49 - Revised Elev. (Crown) Arch Equalization Sta. H.H.C.
7/11/52 - Revised notes & added Class 'A' Excavation - H.R.G.

STATE OF ILLINOIS
DEPARTMENT OF PUBLIC WORKS & BUILDINGS
DIVISION OF HIGHWAYS

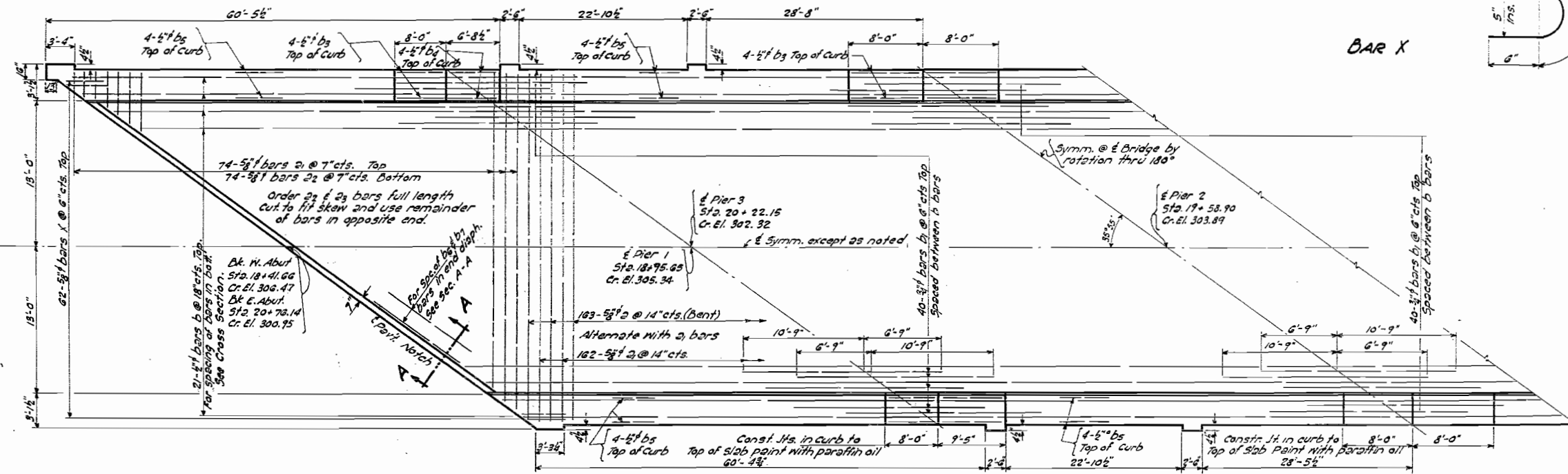
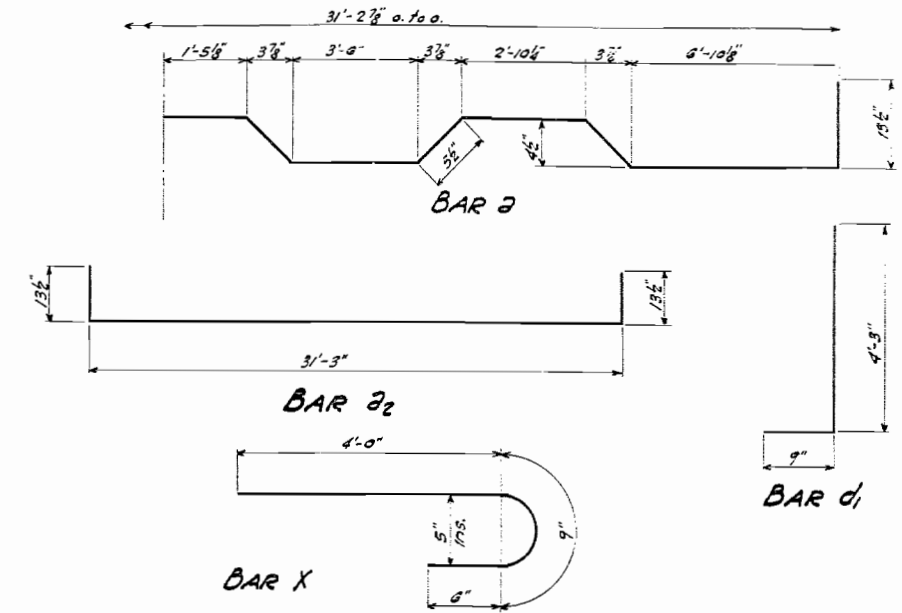
PROJECT NO.	SECTION	COUNTY	TOTAL SHEETS	SHEET NO.	SHEET NO. 2
F.A. 26	139 HB-1	Kankakee	20	-	10 SHEETS
FED. ROAD DIST. NO. 7	ILLINOIS	FED. AID PROJECT			



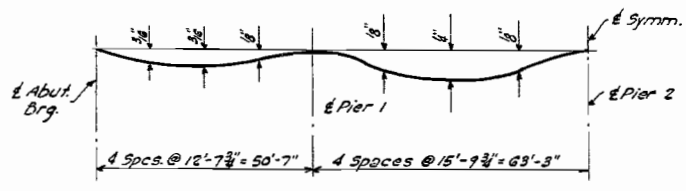
SECTION A-A



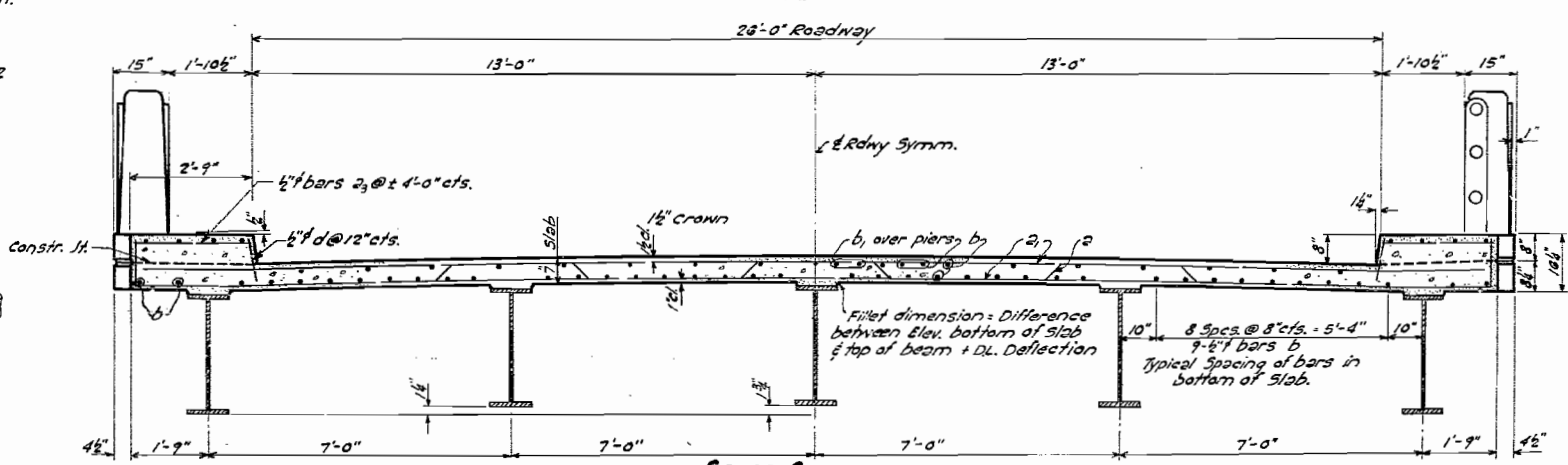
CURB DETAILS



PLAN



D.L. DEFLECTION



CROSS SECTION

BILL OF MATERIAL SUPERSTR.

BAR NO	SIZE	LENGTH	SHAPE
a	103	5/8"	34'-3"
a1	398	5/8"	31'-3"
a2	74	5/8"	33'-0"
a3	110	5/8"	2'-0"
b	488	5/8"	30'-0"
b1	120	5/8"	17'-0"
b2	8	5/8"	9'-0"
b3	32	5/8"	7'-9"
b4	8	5/8"	6'-0"
b5	64	5/8"	24'-9"
b6	52	5/8"	28'-0"
b7	40	5/8"	11'-0"
d	470	1/2"	1'-0"
d1	72	5/8"	5'-0"
d2	16	1/2"	3'-0"
d3	32	1/2"	2'-0"
x	124	5/8"	5'-3"

Material	Quantity	Unit	Sec.
Class X Concrete	cu. yds.	203.7	B
Handrail concrete	cu. yds.	4.3	B
Reinforcement Bars	Lbs.	37880	B
Structural Steel	Lbs.	195000	B-F
Name Plate	Each	1	B
Metal Handrail	Lin. Ft.	423	B-F

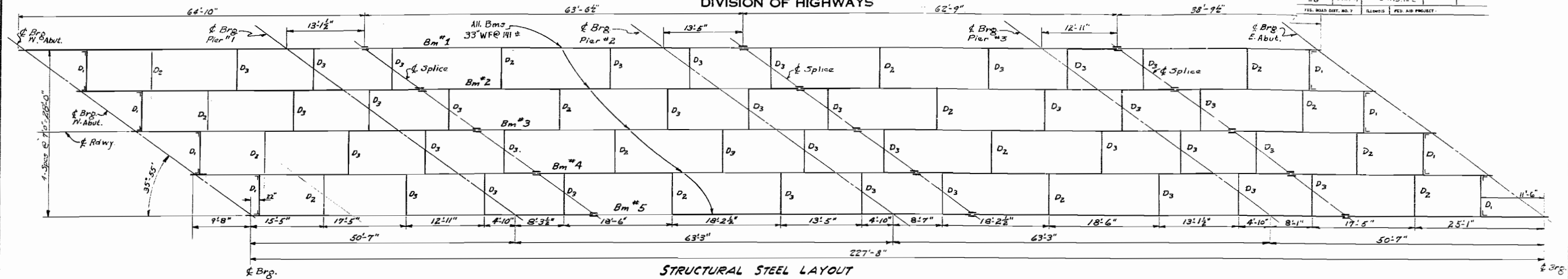
COMPUTED: *Mary M. Jones*
 CHECKED: *Harry P. Graham*
 DRAWN: *C.E. J. Oehrke*
 CHECKED: *H.P.H.*

EXAMINED: *[Signature]* 2-5-1949
 PASSED: *[Signature]*
 APPROVED: *[Signature]*

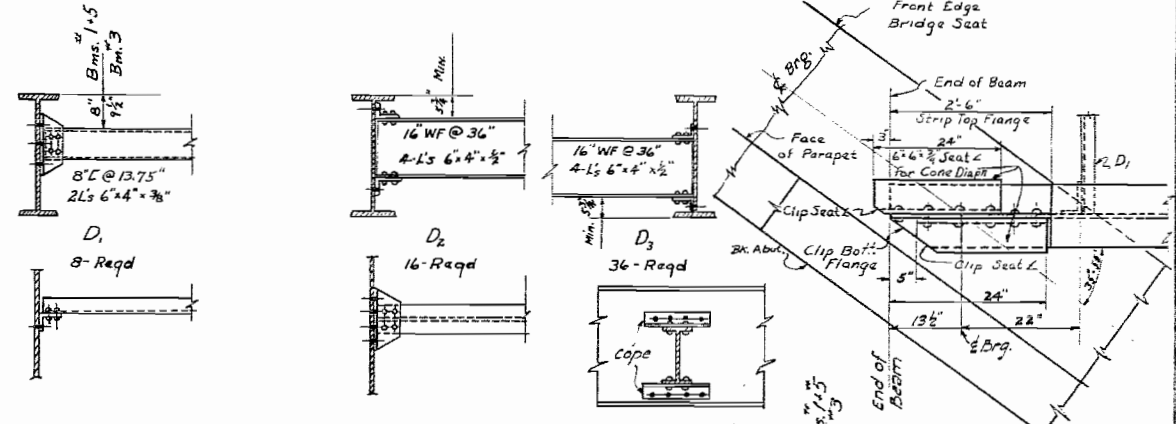
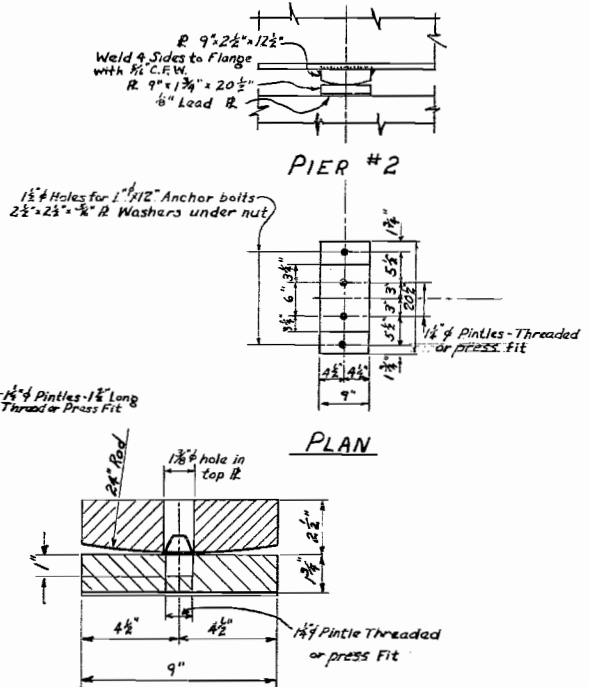
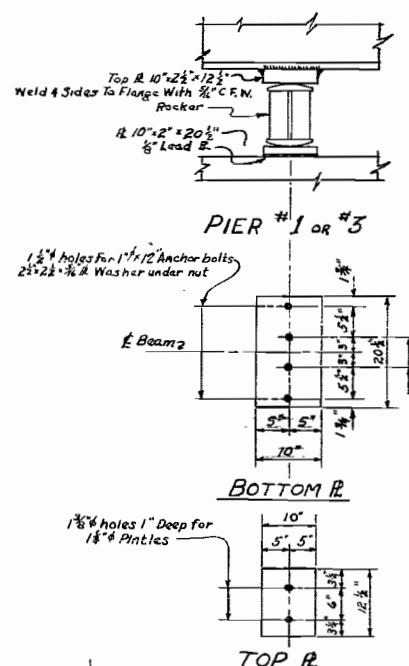
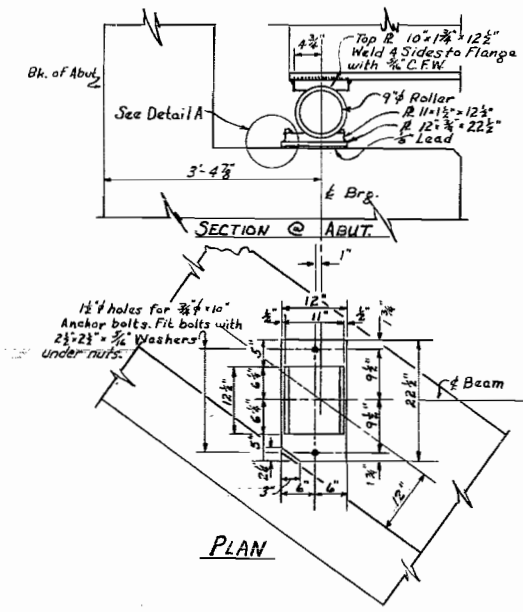
AROMA PARK ROAD OVER F.A. RTE 26
 PROJECT U1-29(9)
 F.A. RTE 26 SEC. 139 HB-1-HF-1
 KANKAKEE CO.
 STA. 230 + 53.99

STATE OF ILLINOIS
DEPARTMENT OF PUBLIC WORKS & BUILDINGS
DIVISION OF HIGHWAYS

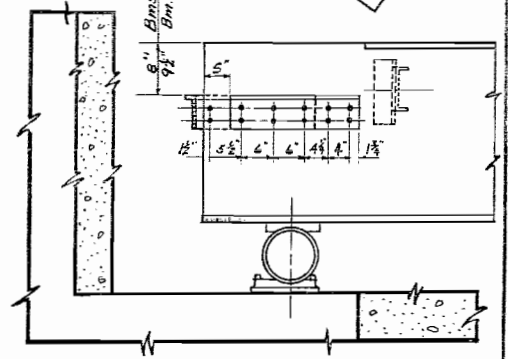
SECTION	COUNTY	TOTAL SHEETS	SHEET NO.	SHEET NO.
26	KANKAKEE	33	5	10 SHEETS



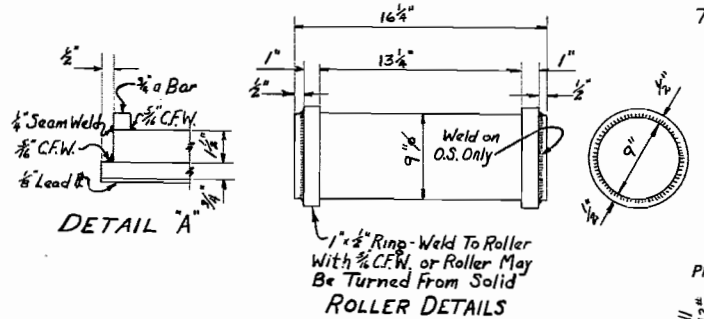
STRUCTURAL STEEL LAYOUT



DIAPHRAGM DETAILS

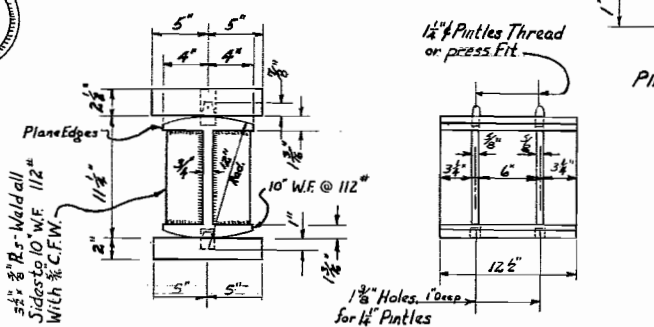


ELEVATION SEAT ANGLE DETAILS FOR CONCRETE DIAPHRAGMS AT ABUTMENTS

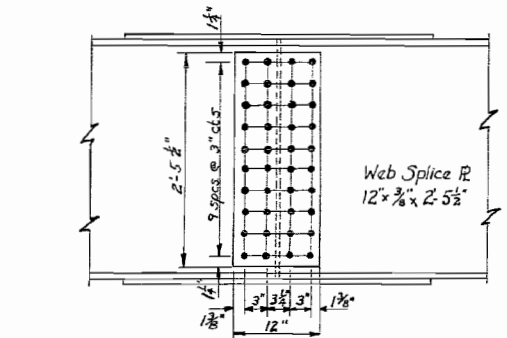


COMPUTED	EXAMINED
CHECKED	DESIGNED
DRAWN	PASSED
CHECKED	APPROVED

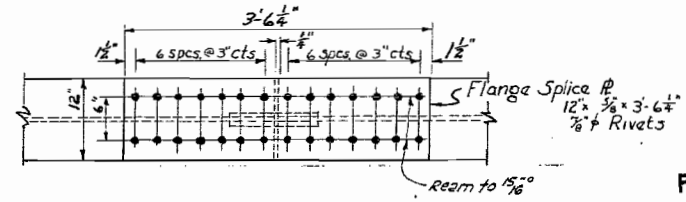
DETAIL OF BEARING AT PIER #2



BEARING DETAILS PIERS #1 + 3



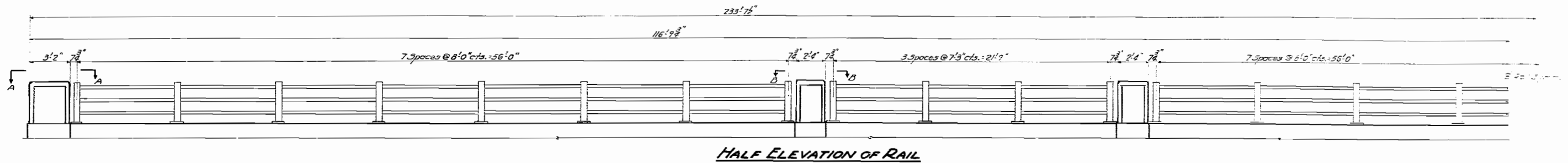
SPLICE DETAILS



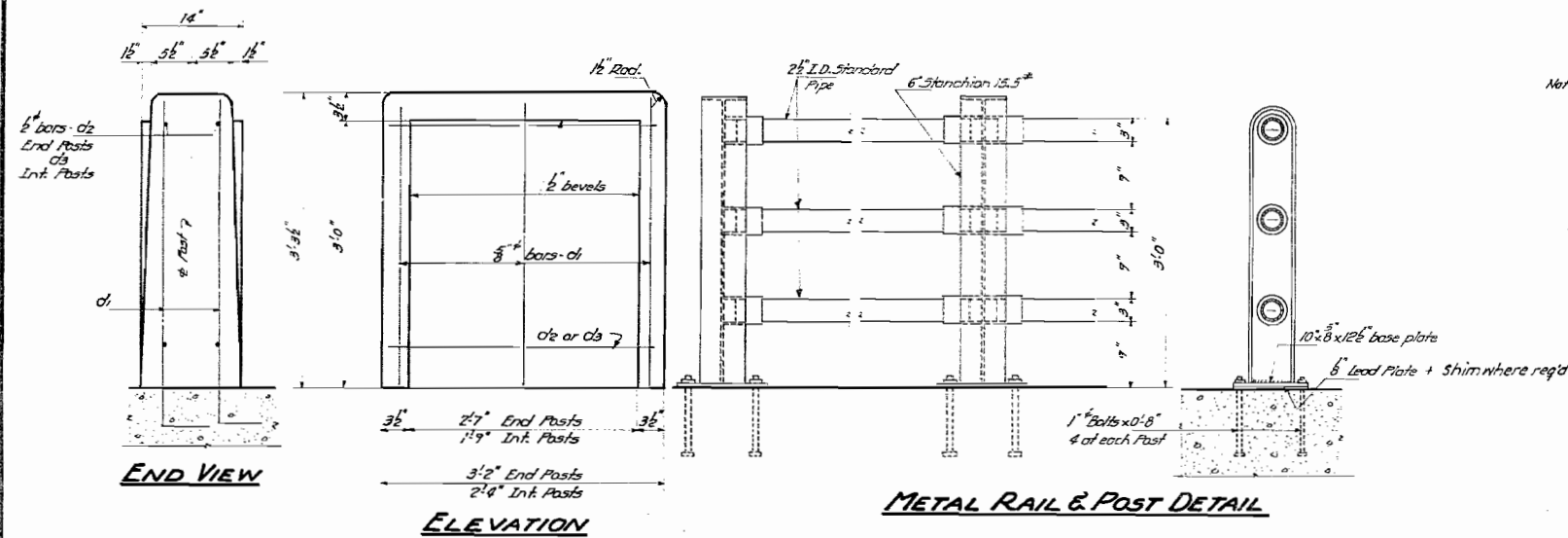
PROJECT UI-29(9)
FA. RTE. 26 SECTION 139 HB-1-HF/1
KANKAKEE COUNTY
STATION 230+53.99
AROMA PARK ROAD OVER FA. RTE. 26

STATE OF ILLINOIS
DEPARTMENT OF PUBLIC WORKS & BUILDINGS
DIVISION OF HIGHWAYS

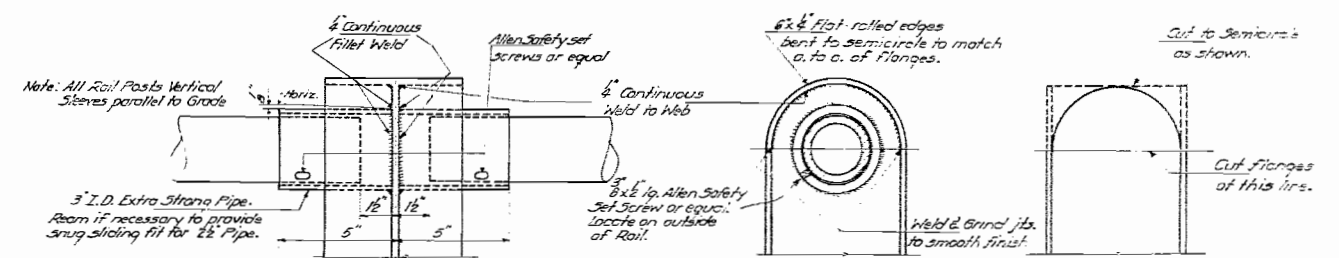
SECTION	DATE	BY	APP'D	NO.
1	10-21-21	W. J. Miller		1
2	10-21-21	W. J. Miller		2
3	10-21-21	W. J. Miller		3
4	10-21-21	W. J. Miller		4
5	10-21-21	W. J. Miller		5
6	10-21-21	W. J. Miller		6
7	10-21-21	W. J. Miller		7
8	10-21-21	W. J. Miller		8
9	10-21-21	W. J. Miller		9
10	10-21-21	W. J. Miller		10



HALF ELEVATION OF RAIL

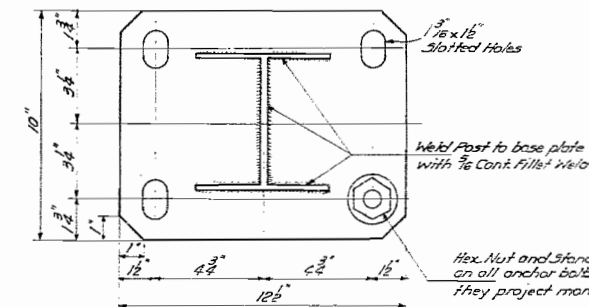


METAL RAIL & POST DETAIL



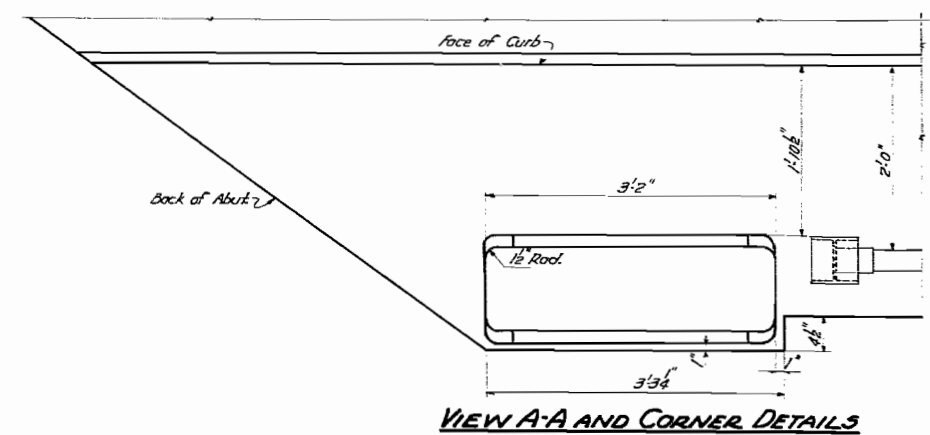
SIDE ELEVATION OF POST

END ELEVATIONS OF POST

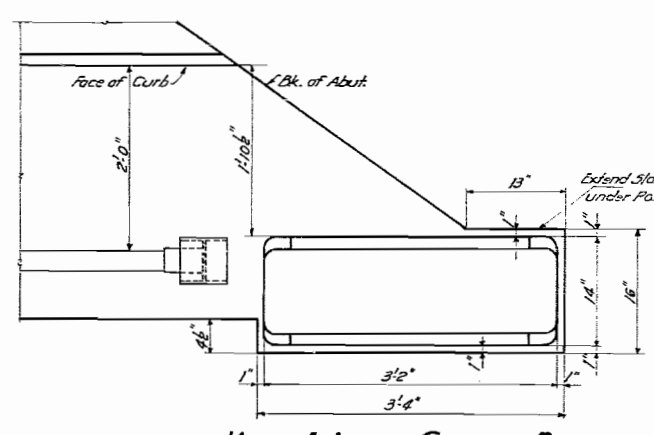


PLAN-BASE PLATE

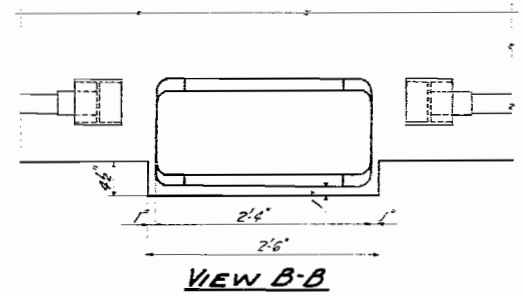
All Pipe shall conform to the Standard Specifications for welded and seamless steel pipe, A.S.T.M. designation: A53.
Cost of lead plates bearing cap & anchor bolts to be included in contract unit price per lin. ft. for Metal Handrail. Provide one 1/2\"/>



VIEW A-A AND CORNER DETAILS



VIEW A-A AND CORNER DETAILS



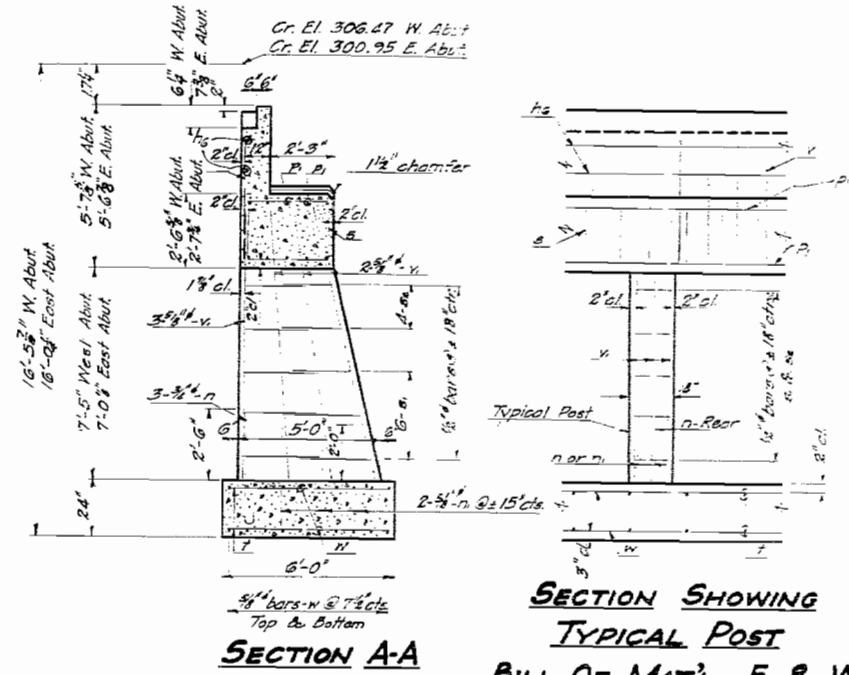
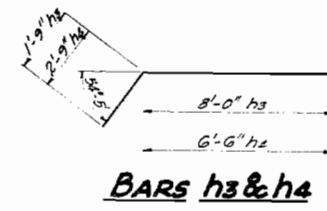
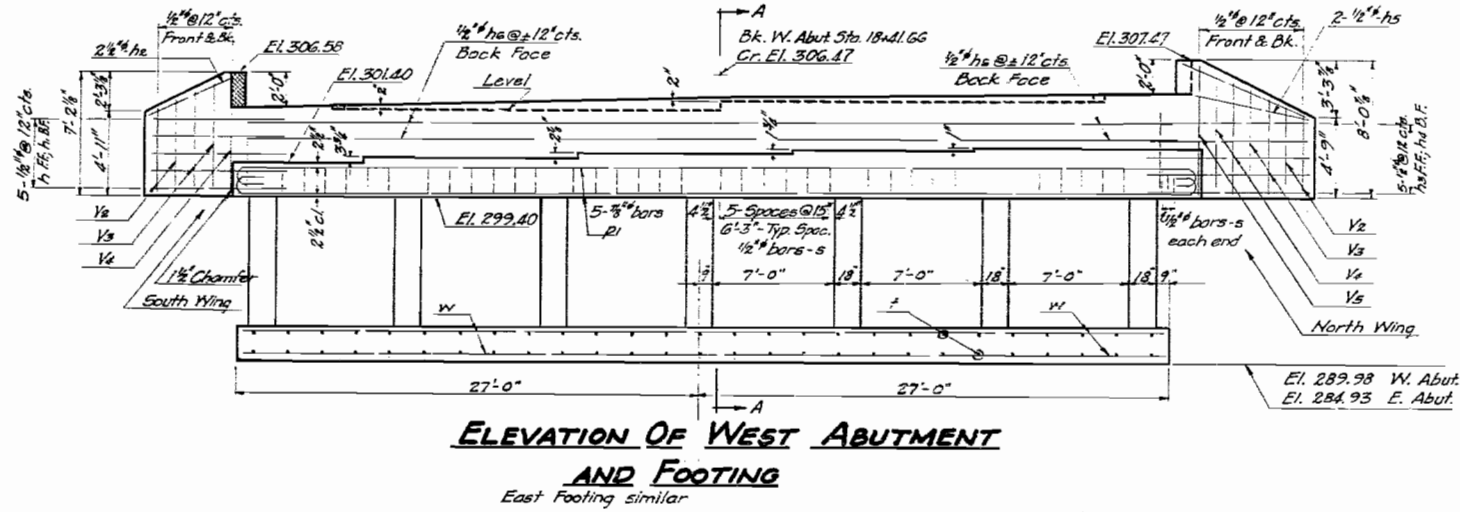
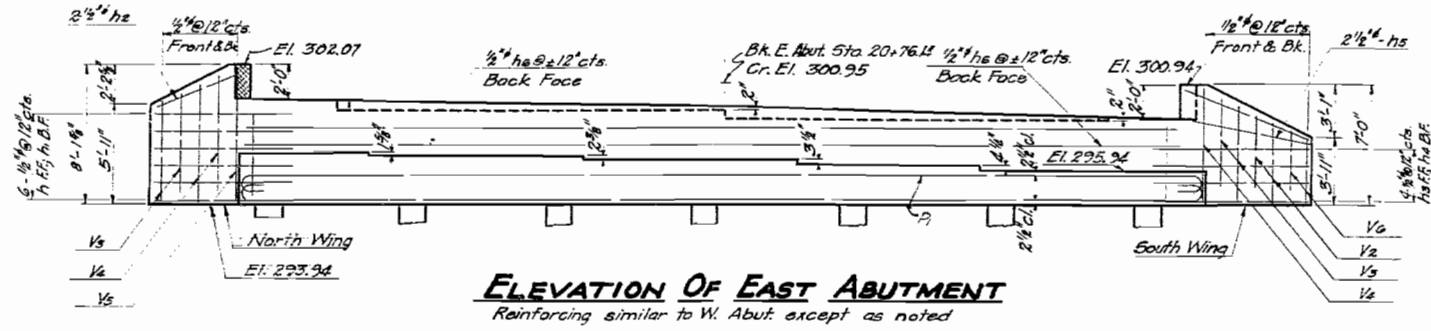
VIEW B-B

COMPUTED *Henry H. Deas*
CHECKED *Harry P. Kalkreuth*
DRAWN *C.E.T.*
CHECKED *H.P.M.*
EXAMINED *W. J. Miller*
PASSED *W. J. Miller*
APPROVED *C. M. Hathaway*

AROMA PARK RD. OVER FA RTE. 26
PROJECT UI-29 (D)
FA. RTE. 26 - SEC. 139-HE-1
KANKAKEE CO.
STA. 230+53.99

STATE OF ILLINOIS
DEPARTMENT OF PUBLIC WORKS & BUILDINGS
DIVISION OF HIGHWAYS

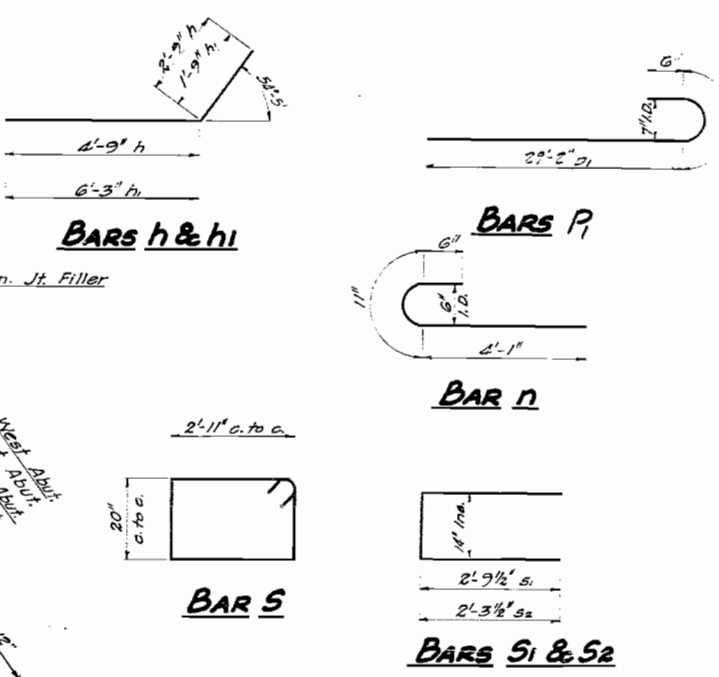
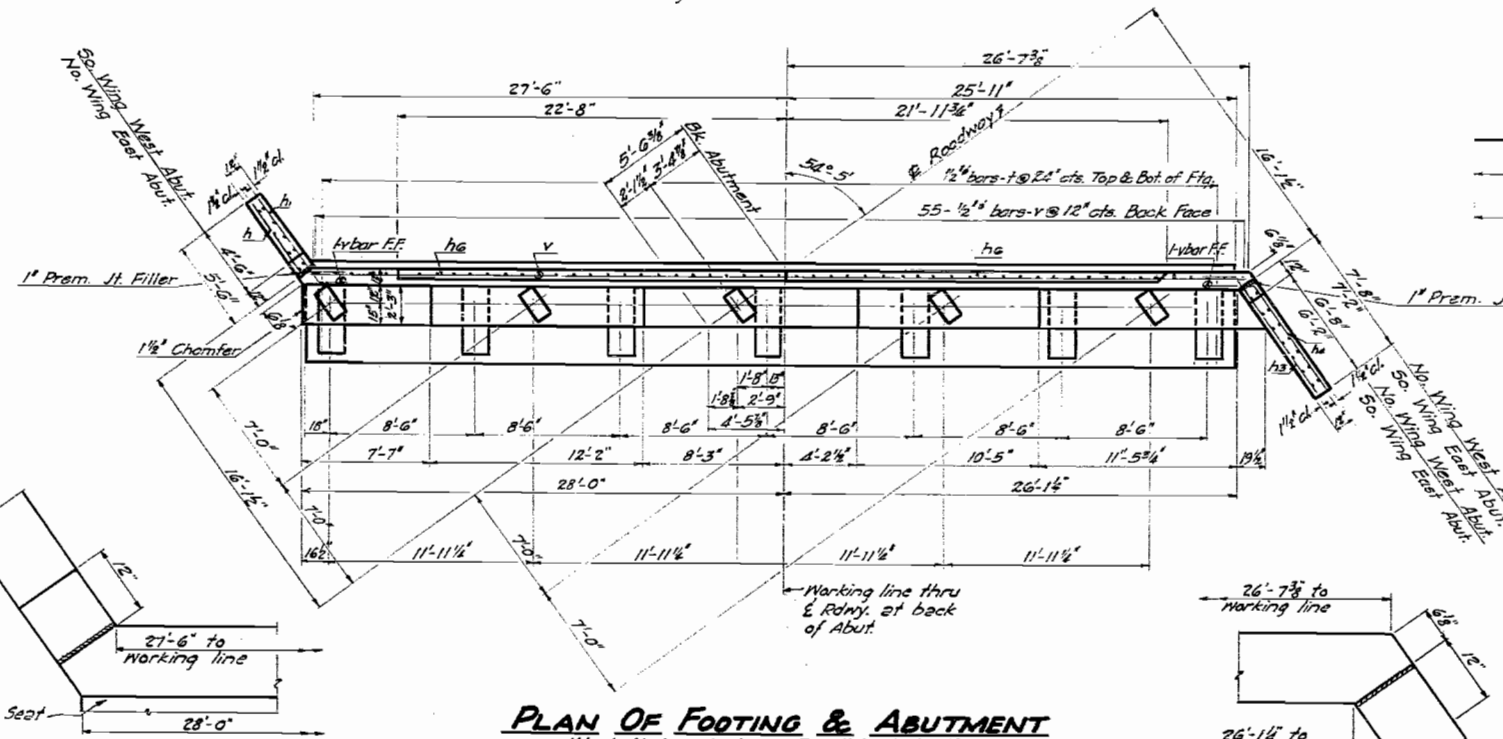
PROJECT NO.	DATE	SCALE	SHEET NO.	TOTAL SHEETS
26	11-12-99	AS SHOWN	50	10



BILL OF MAT'L. - E. & W. ABUTS.

BAR NO.	SIZE	LENGTH	SHAPE
v	1/2"	4'-9"	
w	5/8"	8'-9"	
vs	1/2"	4'-6"	
vs	1/2"	5'-6"	
va	1/2"	6'-6"	
vs	1/2"	7'-9"	
vs	1/2"	3'-9"	
h	1/2"	7'-6"	
h	1/2"	8'-0"	
h2	1/2"	5'-6"	
h3	9/16"	9'-9"	
h4	9/16"	9'-3"	
h5	3/4"	7'-9"	
h6	3/4"	29'-0"	
p1	3/8"	30'-9"	C
n	3/4"	5'-6"	C
n	5/8"	3'-9"	
s	1/2"	10'-3"	
s	1/2"	6'-9"	
s2	1/2"	5'-9"	
f	3/4"	5'-6"	
w	5/8"	28'-9"	

Class 1 Concrete Cu. Yds. 122.5
Reinforcement Bars lbs. 9290



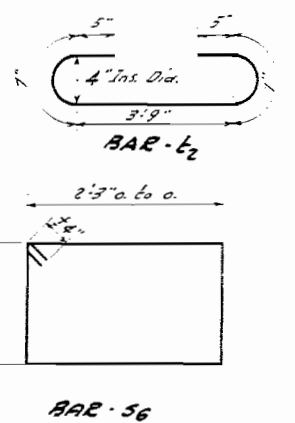
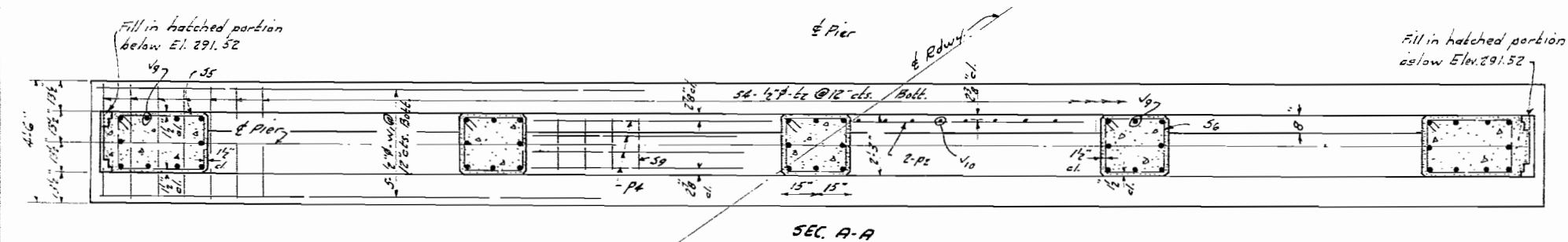
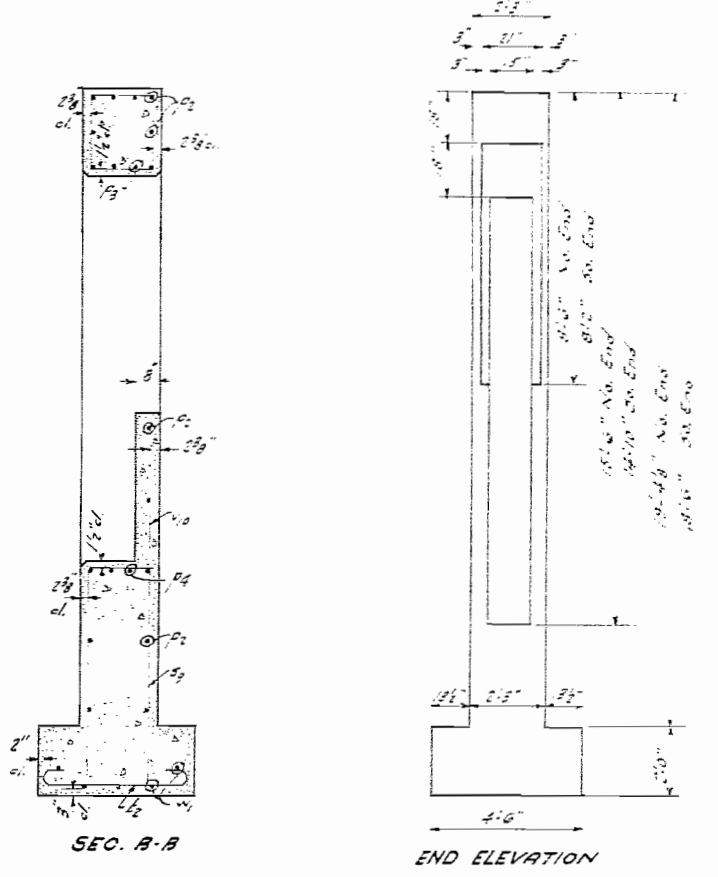
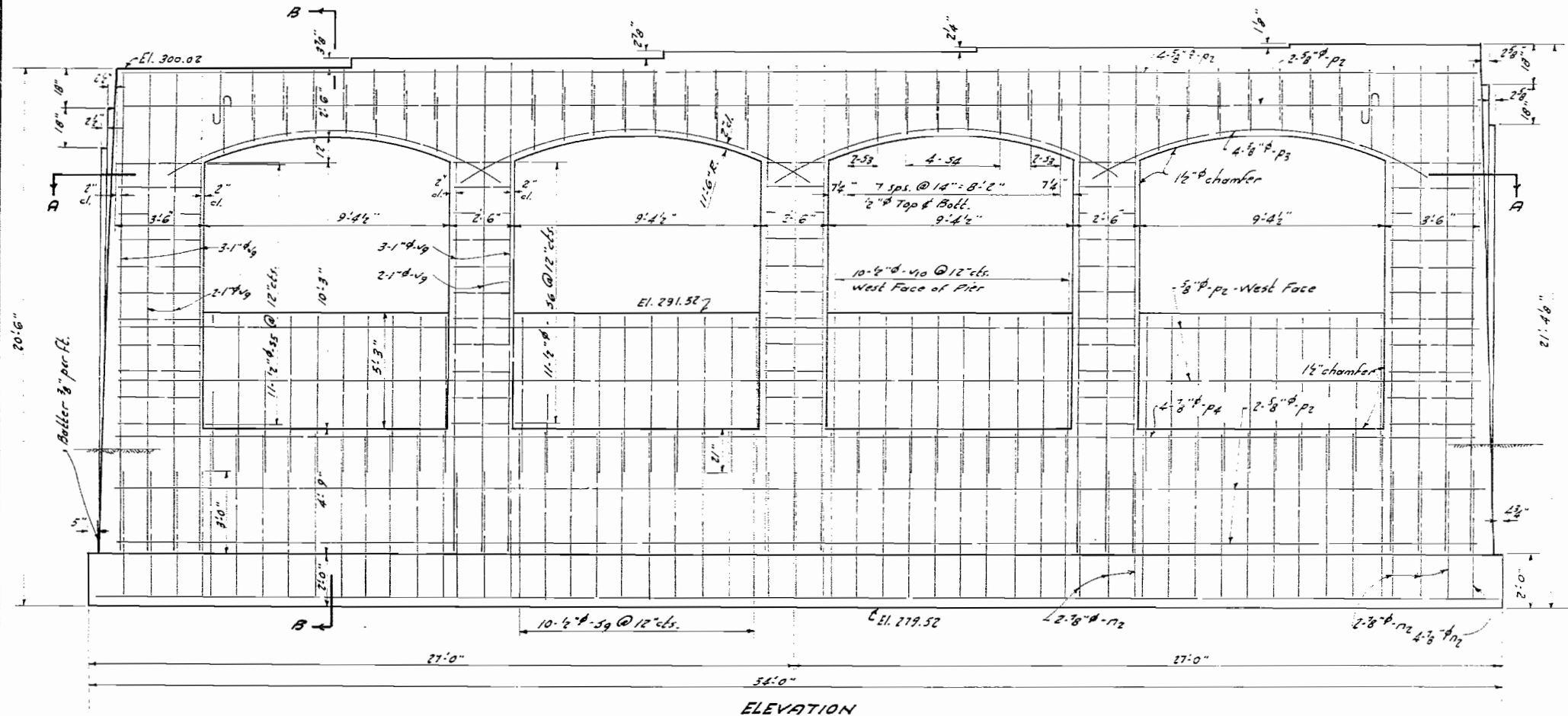
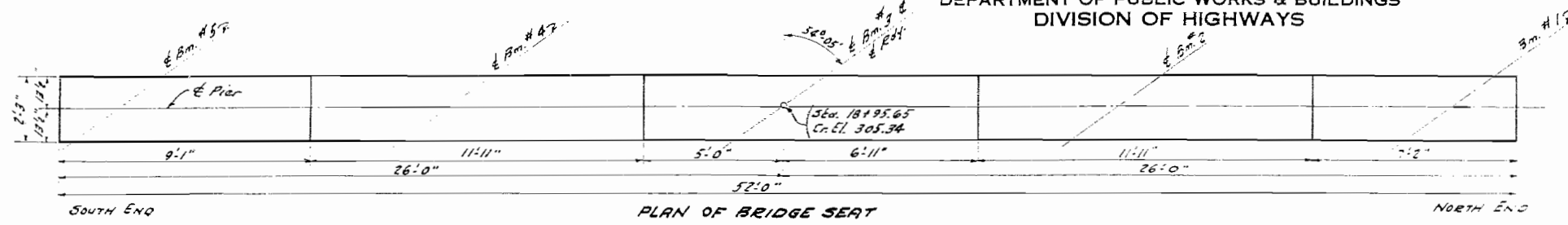
COMPUTED *Harry P. Graham*
CHECKED *Harry P. Graham*
DRAWN *L.J.D.*
CHECKED *H.P.G.*

EXAMINED *[Signature]*
PASSED *[Signature]*
APPROVED *C.M. Hathaway*
CHIEF HIGHWAY ENGINEER

AROMA PARK ROAD OVER F.A. RT. 26
PROJECT U1 29(9)
F.A. RTE 26 SEC. 139 H-B-1
KANKAKEE CO.
STA. 230 + 53.99

STATE OF ILLINOIS
DEPARTMENT OF PUBLIC WORKS & BUILDINGS
DIVISION OF HIGHWAYS

PROJECT NO.	SECTION	COUNTY	DATE	SHEET NO.
26	1394B-1	KANKAKEE	30	1
SHEET 1 OF 1				

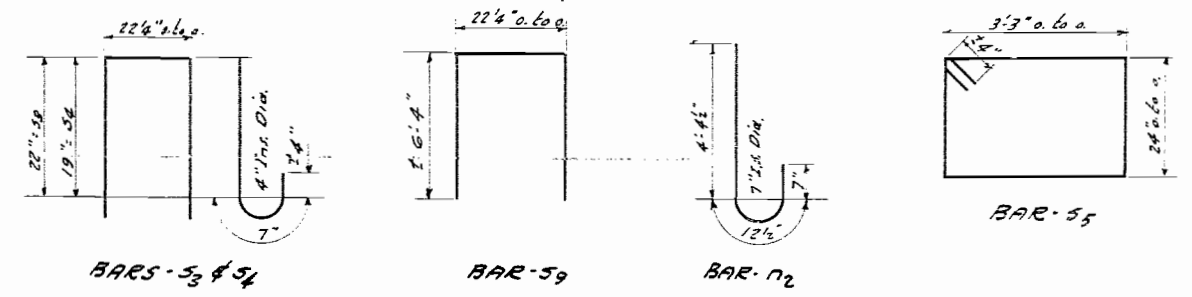


BILL OF MATERIAL - PIER #1

Bar	No.	Size	Length	Qty
72	38	7/8"	5'-0"	1
91	24	5/8"	27'-0"	1
93	16	"	13'-3"	1
94	8	7/8"	27'-0"	1
52	32	1/2"	7'-3"	1
54	32	"	5'-9"	1
55	28	"	11'-0"	1
56	33	"	9'-0"	1
59	20	"	14'-6"	1
42	54	1/2"	5'-9"	1
49	44	1/2"	18'-3"	1
410	40	1/2"	6'-9"	1
411	10	1/2"	27'-9"	1
Class X Conc.		Cu. Yds.		72.2
Reinf. Bars		Lbs.		5570

COMPUTED *Henry K. Baker*
CHECKED *Harry P. Mahan*
DRAWN *H.P.M.*
CHECKED *H.P.M.*

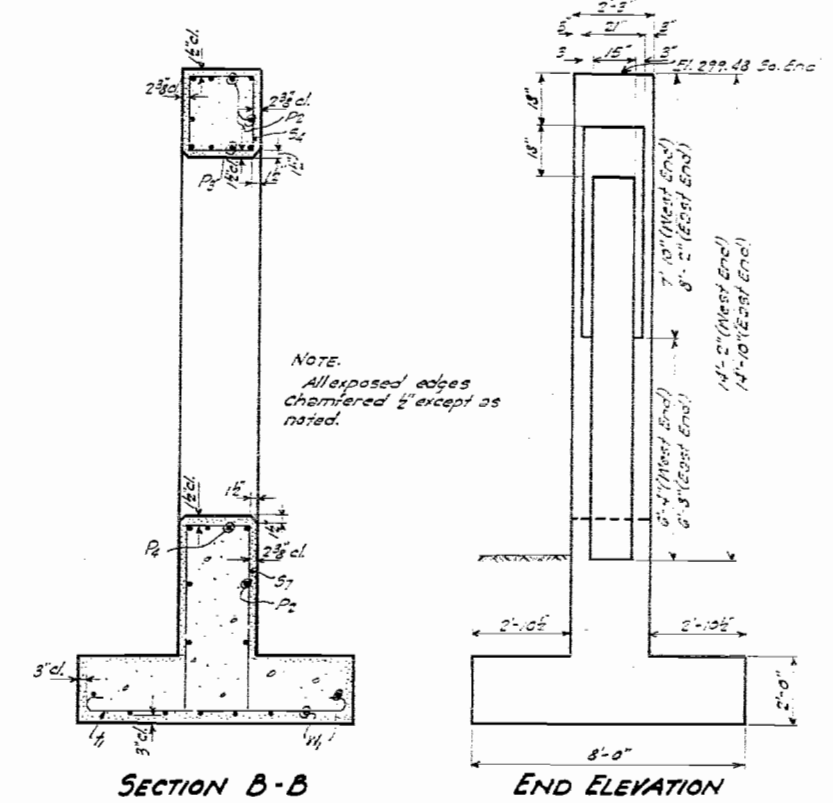
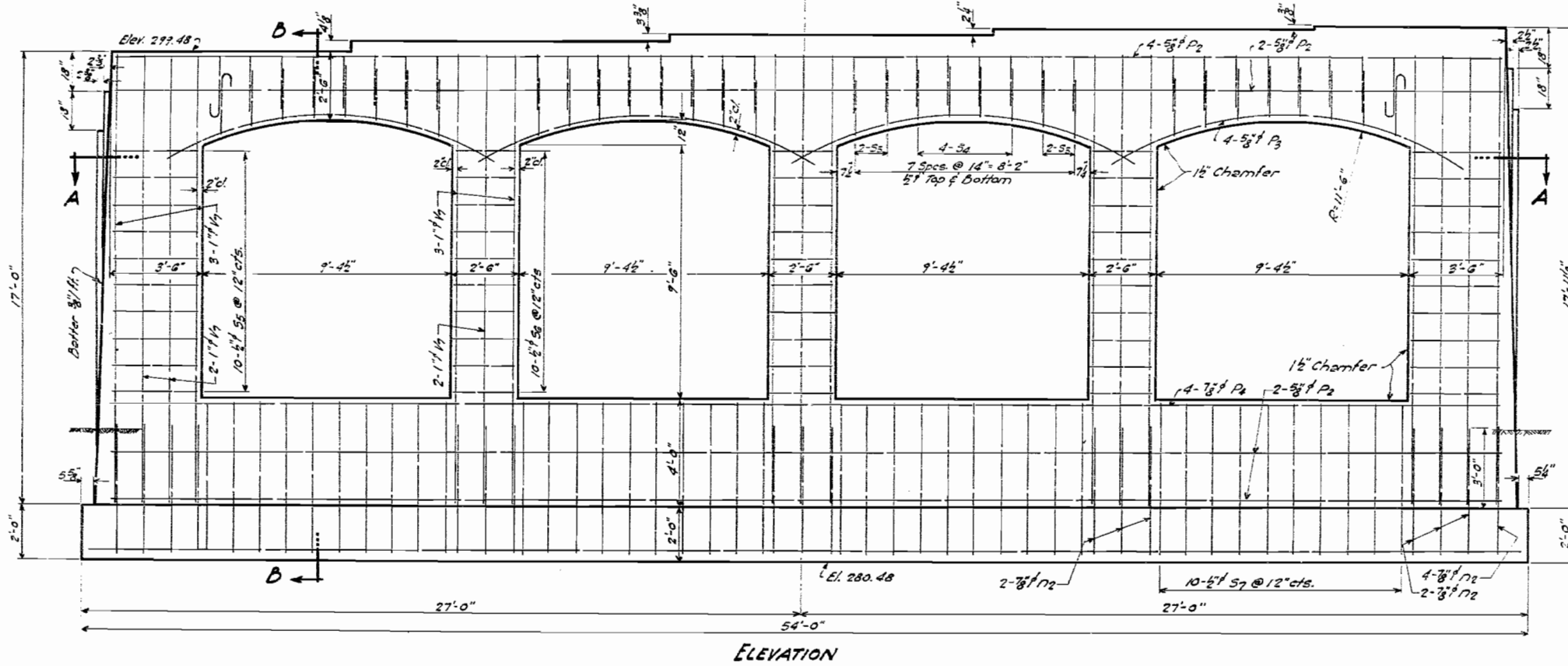
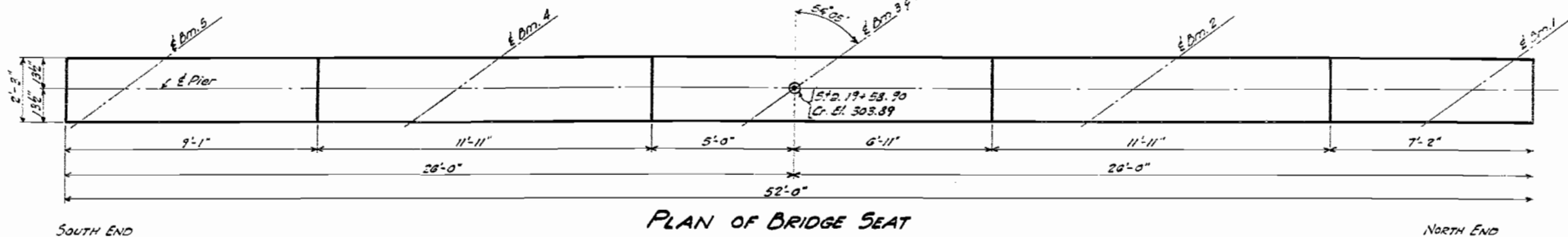
EXAMINED *[Signature]*
PASSED *[Signature]*
APPROVED *C.M. Hathaway*
ENGINEER OF DESIGN
CHIEF HIGHWAY ENGINEER



AROMA PARK ROAD OVER F.A. RTE. 26
PROJECT UI 29(9)
F.A. RTE. 26 - SEC 139-HB-1
KANKAKEE CO.
STA. 230+53.99

STATE OF ILLINOIS
DEPARTMENT OF PUBLIC WORKS & BUILDINGS
DIVISION OF HIGHWAYS

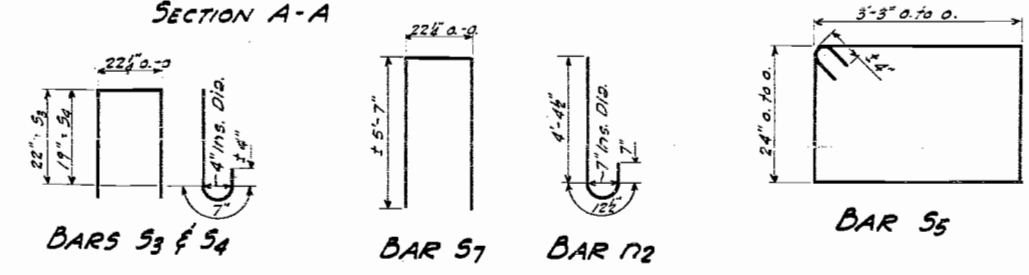
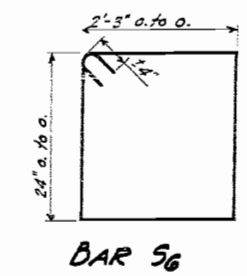
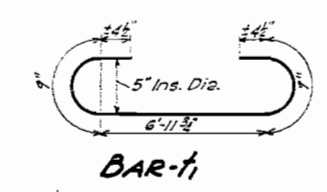
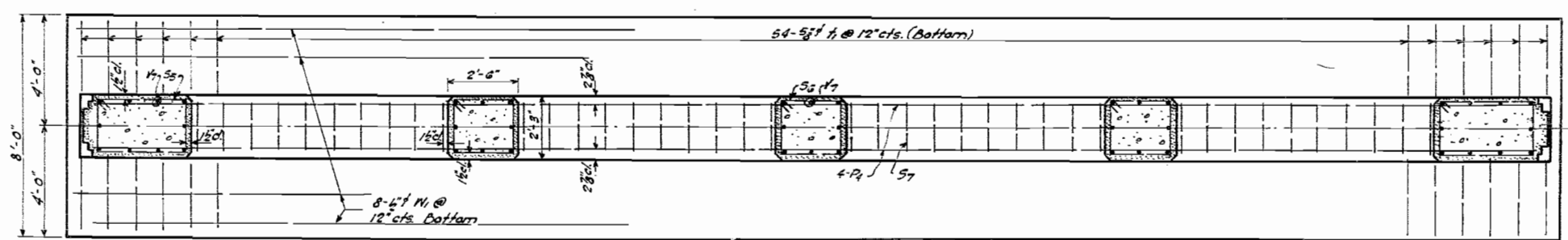
PROJECT NO.	SECTION	DATE	SCALE	SHEET NO.	TOTAL SHEETS
26	39-8	1948	3/8"	50	10
KANKAKEE		STA. 230 + 53.99			



NOTE:
All exposed edges
Chamfered 1/2" except as
noted.

BILL OF MATERIAL PIER 2

BAR	NO	SIZE	LENGTH	SHAPE
P2	38	7/8"	6'-0"	C
P2	20	5/8"	27'-0"	—
P3	15	3/8"	13'-9"	—
P4	8	3/8"	27'-0"	—
S3	52	1/2"	7'-9"	—
S4	52	1/2"	6'-9"	—
S5	20	1/2"	11'-0"	—
S6	30	1/2"	9'-0"	—
S7	40	1/2"	13'-0"	—
T1	54	5/8"	9'-5"	C
T2	44	1/2"	15'-9"	—
T3	16	1/2"	27'-9"	—
Class X Concrete			77.3	
Reinforcement Bars			5450	



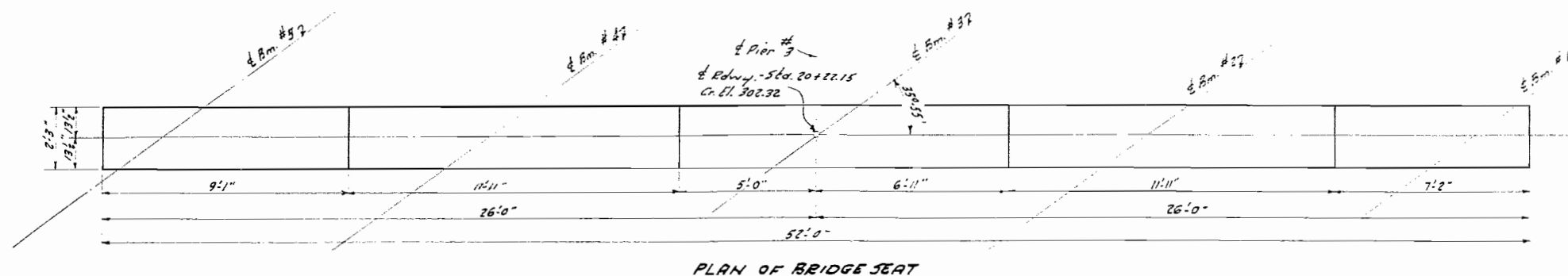
COMPLETED *Harry P. Blaham*
CHECKED *Harry P. Blaham*
DRAWN *L. A. Doyle*
CHECKED *H. P. G.*

EXAMINED *[Signature]*
PASSED *[Signature]*
APPROVED *[Signature]*

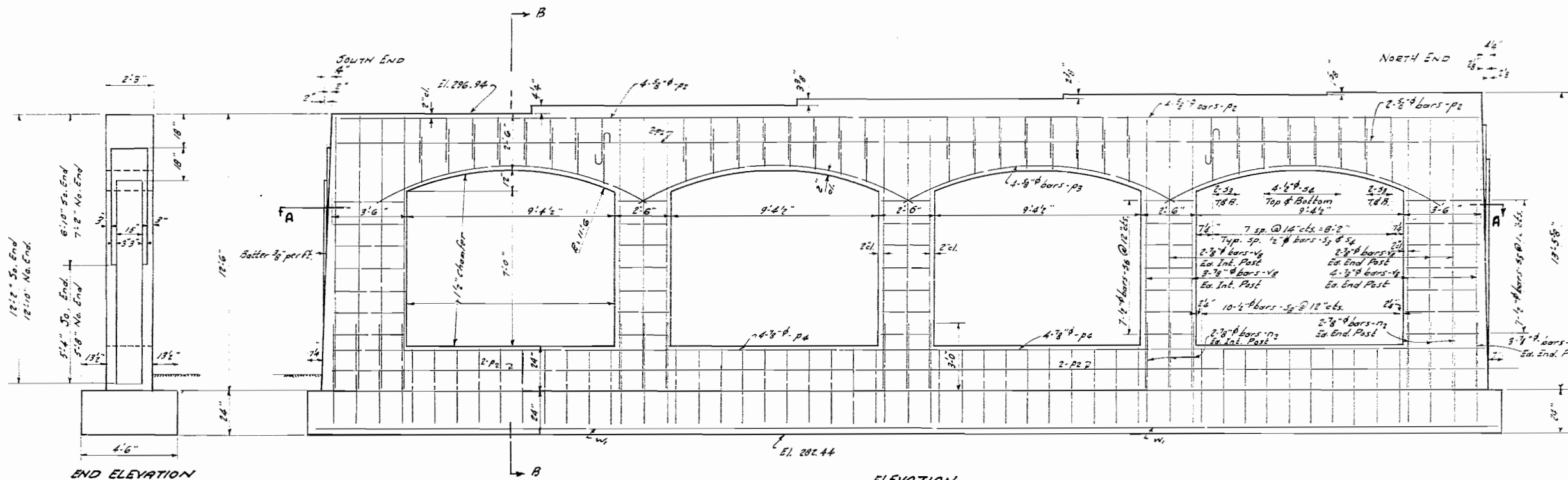
AROMA PARK ROAD OVER F.A. RT 26
PROJECT UI-29(9)
F.A. RTE. 26 - SEC. 139 HB-1
KANKAKEE COUNTY
STA. 230 + 53.99

STATE OF ILLINOIS
DEPARTMENT OF PUBLIC WORKS & BUILDINGS
DIVISION OF HIGHWAYS

SECTION	DATE	BY	NO.	REV.	SHEET NO. OF
20	12/10/32	MANOR	30	15	10 SHEETS

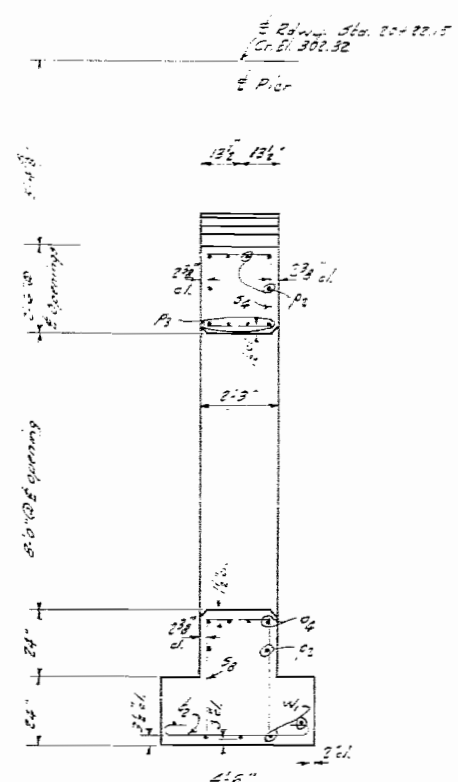


PLAN OF BRIDGE SEAT



END ELEVATION

ELEVATION



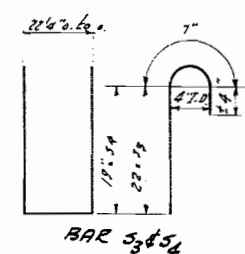
SEC. B-B

NOTE - Edges 1/2" chamfer except as noted

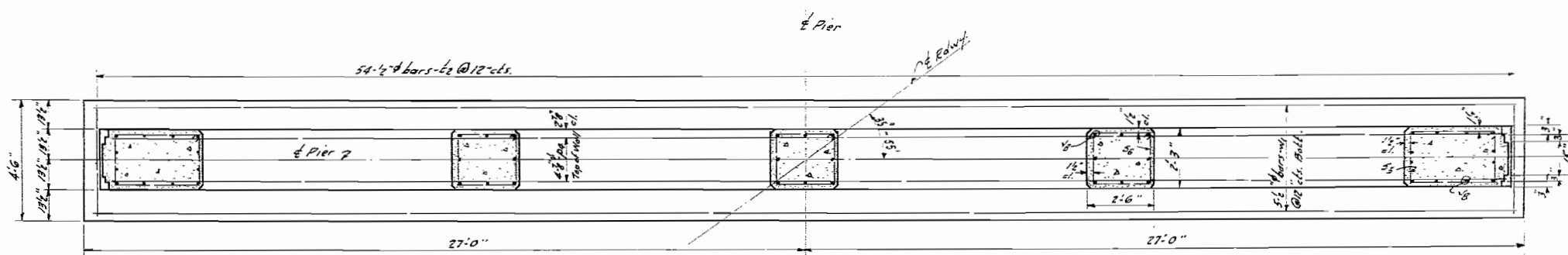
PIER 7 - BILL OF MATERIALS

Bar	No.	Size	Length	Shape
p1	36	7/8"	6'-0"	—
p2	16	5/8"	27'-0"	—
p3	16	5/8"	13'-3"	—
p4	8	7/8"	27'-0"	—
s1	32	5/8"	7'-3"	U
s2	32	"	8'-9"	U
s3	14	"	1'-0"	□
s4	21	"	9'-0"	□
s5	40	"	9'-0"	□
e1	54	5/8"	51'-9"	—
w1	10	5/8"	27'-9"	—

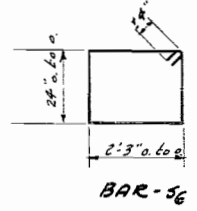
Class X Conc. Cu. Yds. 51.1
Reinf. Bars Lbs. 3920



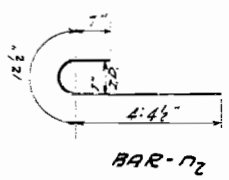
BAR S3&S4



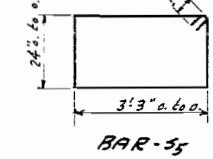
SEC. A-A



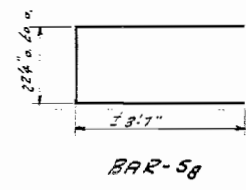
BAR-S6



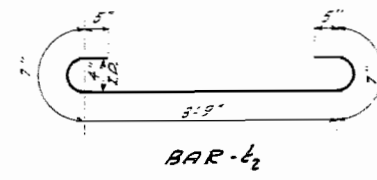
BAR-N2



BAR-S5



BAR-S8



BAR-L2

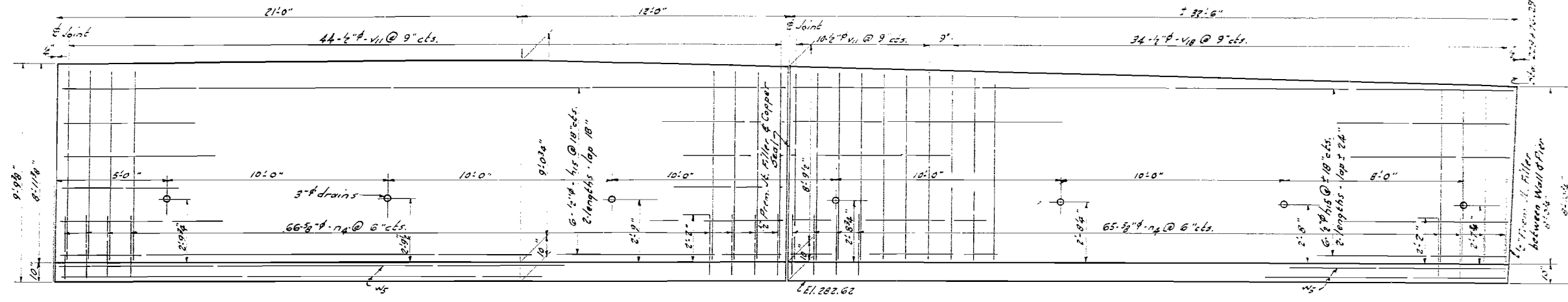
COMPUTED *Harry P. Hathaway*
CHECKED *Harry P. Hathaway*
DRAWN *L. J. Coy*
CHECKED *H. P. Hathaway*

EXAMINED *W. J. ...*
PASSED *W. J. ...*
APPROVED *C. M. Hathaway*
CHIEF HIGHWAY ENGINEER

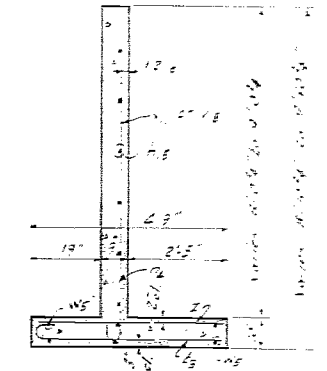
AROMA PARK RD. OVER F.A.R.T.E. 26
PROJECT UI 29 (9)
F.A.R.T.E. 26 - SEC. 139 - HB-1
KANKAKEE CO.
STA. 230+53.99

STATE OF ILLINOIS
DEPARTMENT OF PUBLIC WORKS & BUILDINGS
DIVISION OF HIGHWAYS

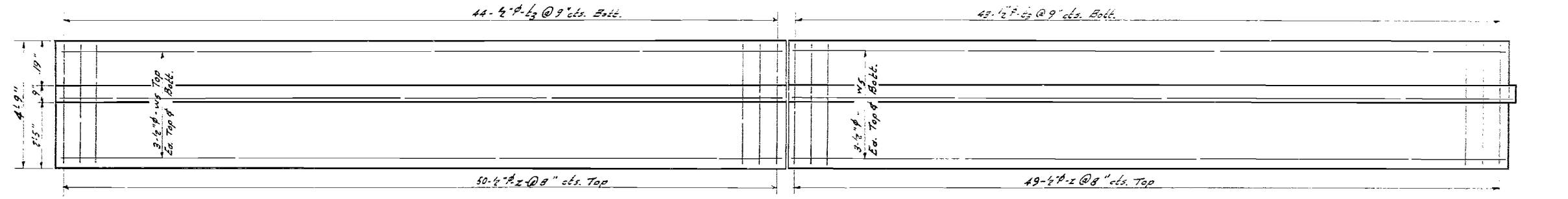
SECTION	NO.	DATE	BY	CHECKED
RETAINING WALL	20	11		



ELEVATION

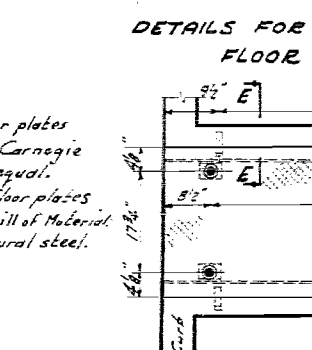
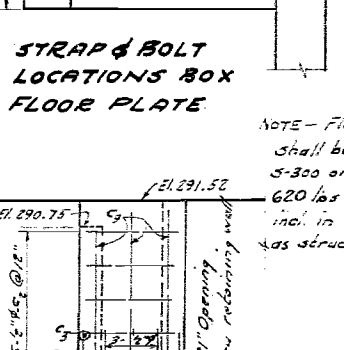
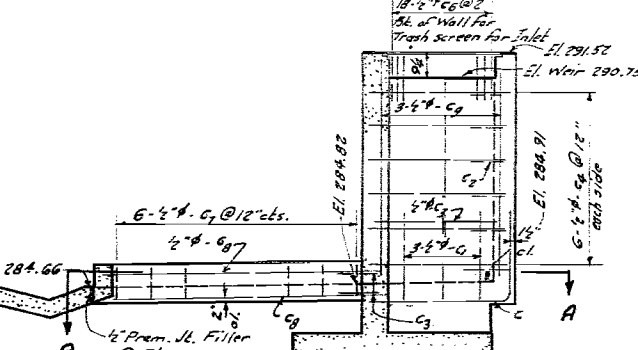
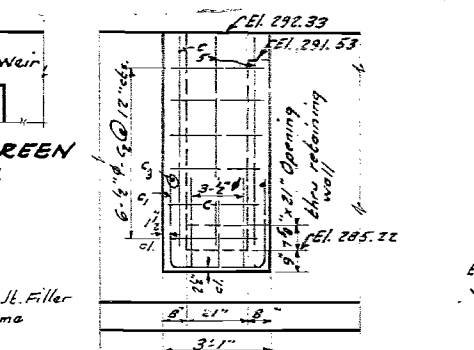
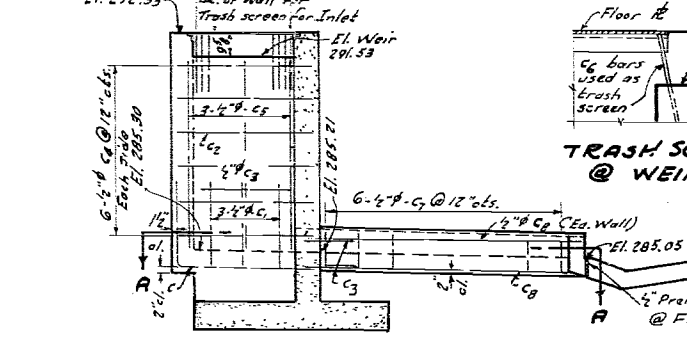
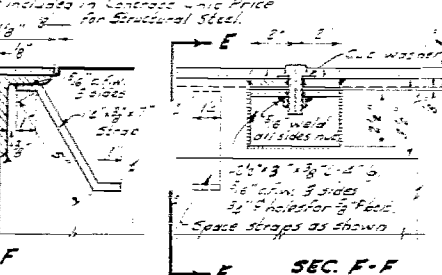
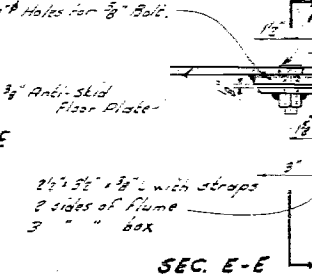
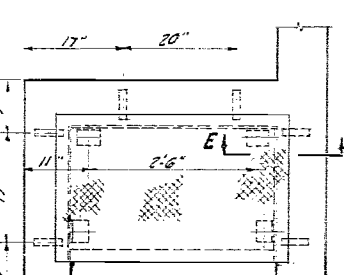
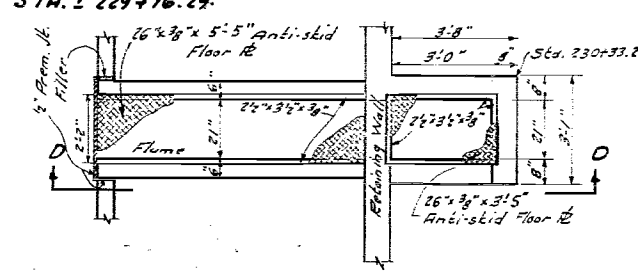
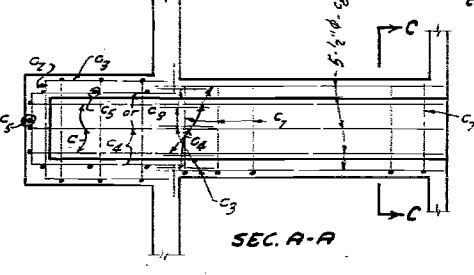
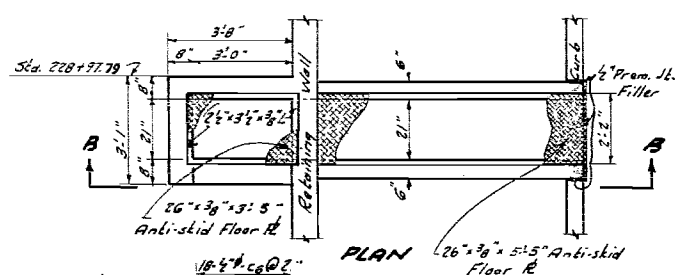


TYPICAL SEC.
See 229+07.9 to 229+09.25



PLAN

RETAINING WALL - STA. 229+10.79
to STA. 229+16.29



COMPLETED *Henry P. Abraham*
CHECKED *Henry P. Abraham*
DRAWN *Suber*
CHECKED *H. P. U.*

EXAMINED *[Signature]*
PASSED *[Signature]*
APPROVED *[Signature]*

TRASH SCREEN @ WEIR

END ELEVATION (NO. INLET)

SEC. C-C

STRAP & BOLT LOCATIONS BOX FLOOR PLATE

END ELEVATION (SO. INLET)

DETAILS FOR FASTENING ANTI-SKID FLOOR PLATES

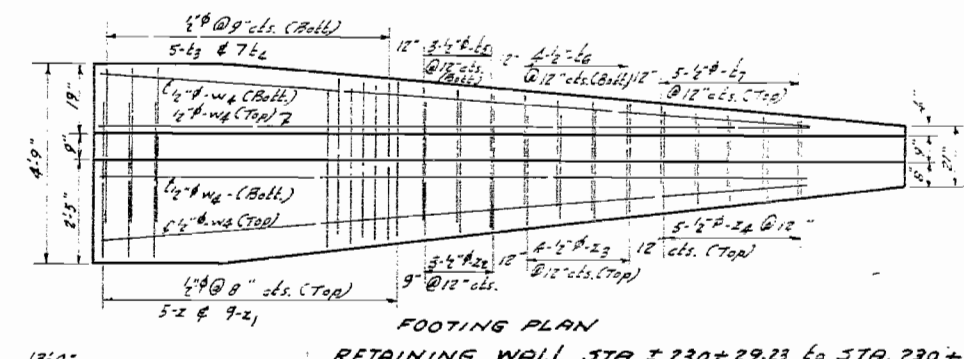
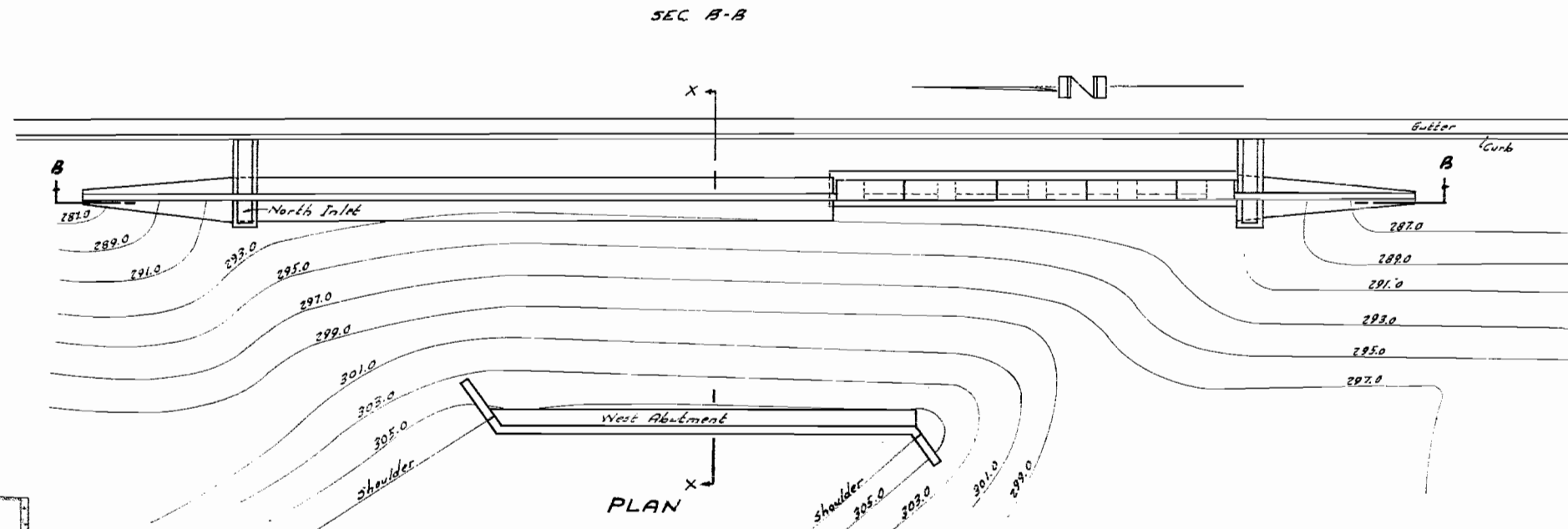
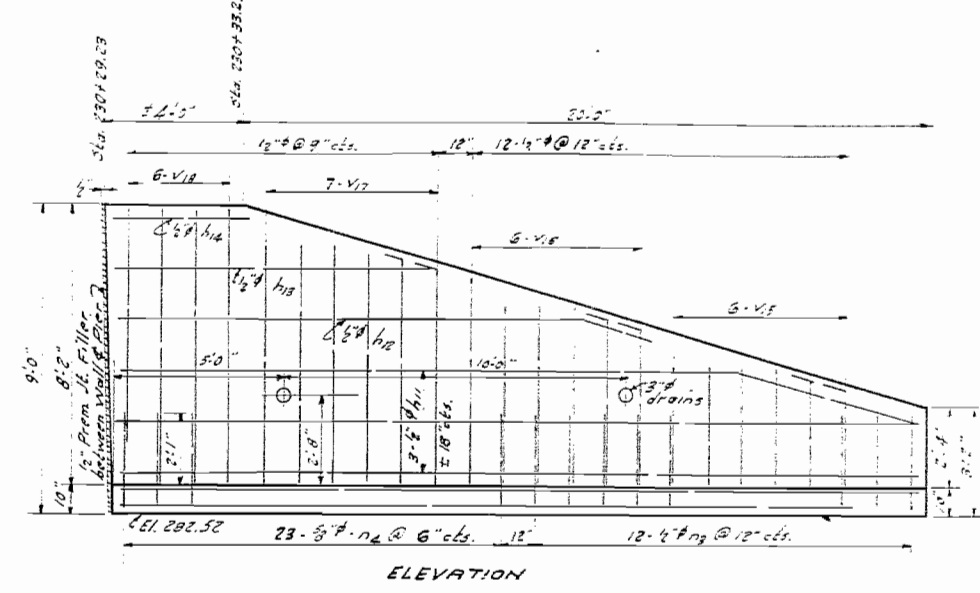
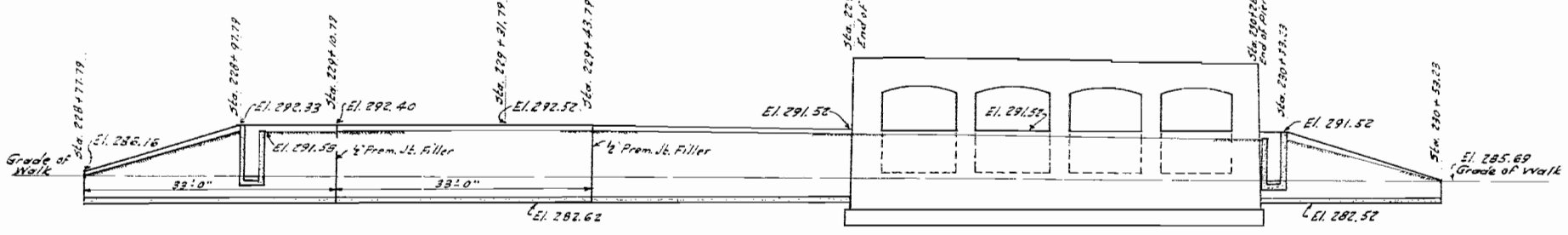
STRAP & BOLT LOCATIONS FLUME FLOOR PLATE

NOTE - Floor plates shall be Carnegie S-300 or equal. 620 lbs floor plates incl. in Bill of Material as structural steel.

AROMA PARK RD. OVER F.A. RTE. 26
PROJECT UI 29 (A)
F.A. RTE. 26 - SEC. 139-HB-1-HF-1
KANKAKEE CO.
STA. 230+52.99

STATE OF ILLINOIS
DEPARTMENT OF PUBLIC WORKS & BUILDINGS
DIVISION OF HIGHWAYS

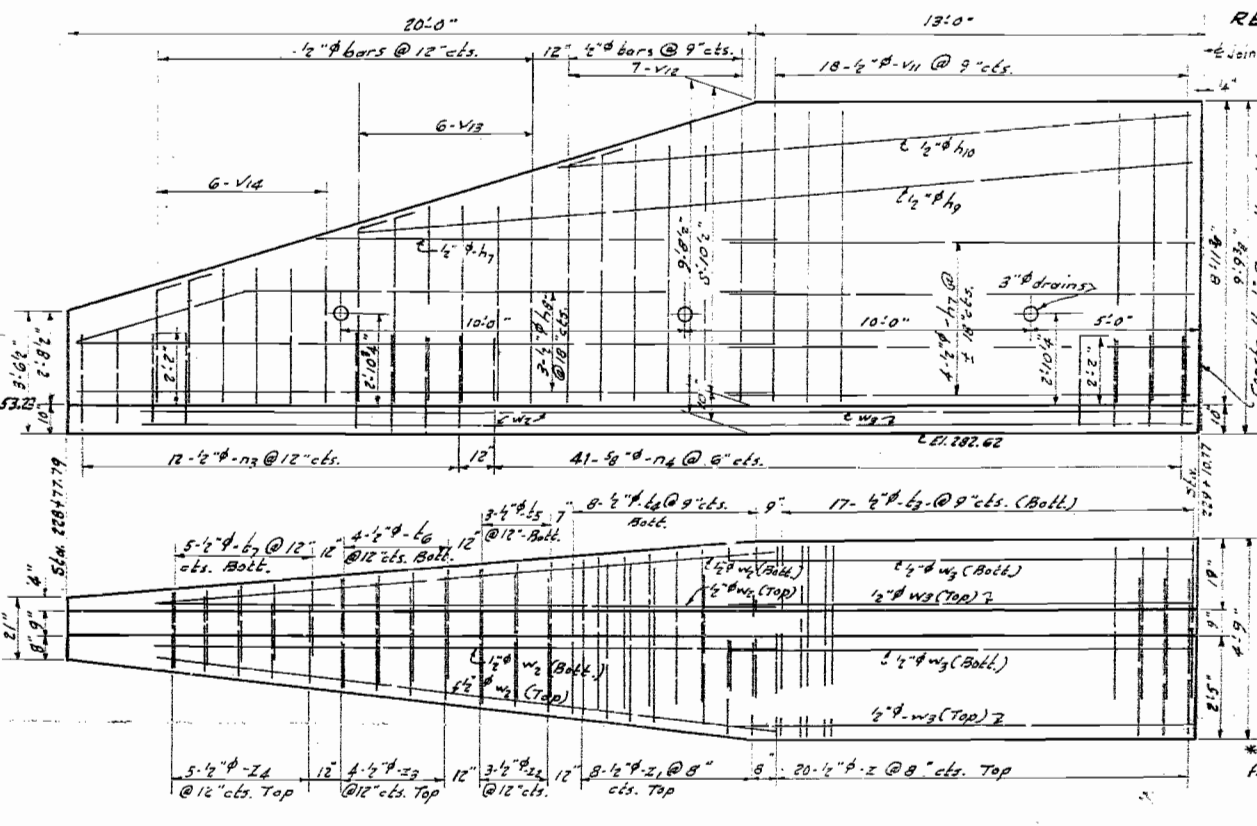
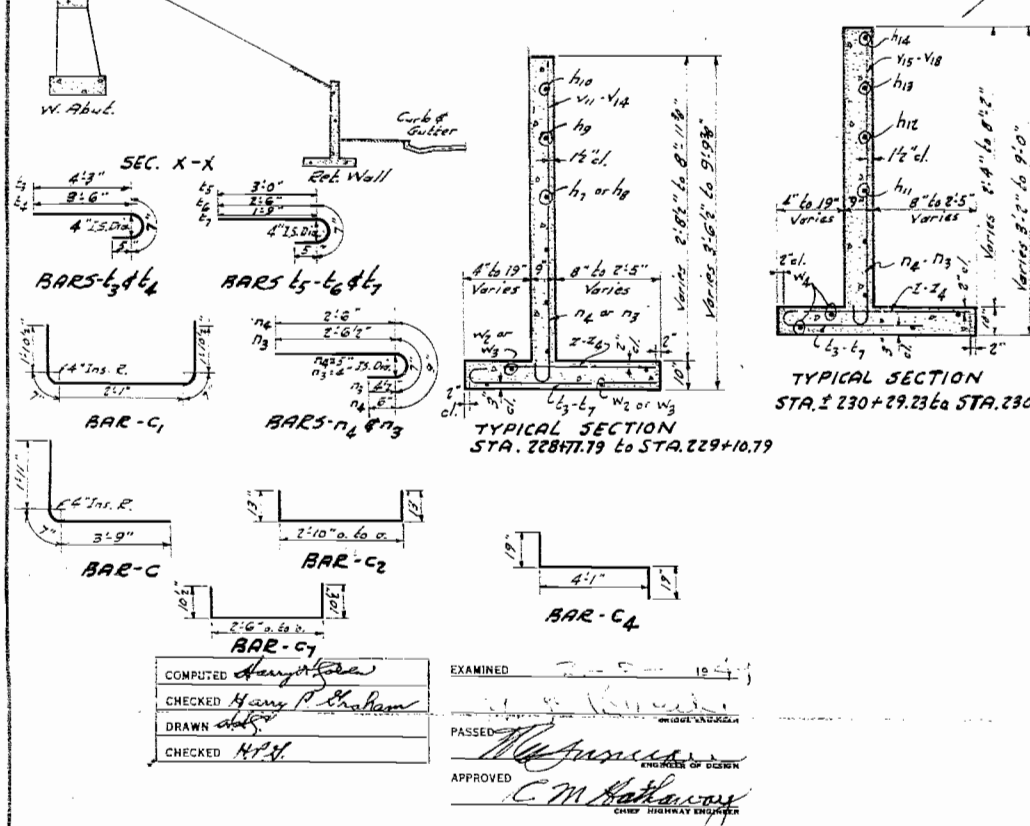
PROJECT NO.	DATE	SCALE	SHEET NO.
26	11-1-26	KANKAKEE	30
KANKAKEE CO. ROAD PROJECT			



RETAINING WALL STA. ± 230+29.23 to STA. 230+53.23

BILL OF MATERIAL - RETAIN'G WALLS & BOXES

Bar No.	Size	Length	Shape	Bar No.	Size	Length	Shape
V11	7/8"	8'-6"		Z	124	1/2"	4'-6"
V12	7/8"	7'-0"		Z	17	"	2'-0"
V13	6"	5'-9"		Z	6	"	3'-6"
V14	6"	4'-0"		Z	8	"	3'-0"
V15	6"	3'-6"		Z	10	"	3'-0"
V16	6"	5'-3"					
V17	7/8"	7'-0"		W	2	1/2"	18'-0"
V18	40"	8'-0"		W	4	"	13'-6"
				W	4	"	20'-9"
				W	22	"	17'-6"
H7	5/8"	13'-6"					
H8	3/4"	20'-6"		N	195	3/8"	3'-9"
H9	1"	24'-6"		N	24	1/2"	3'-6"
H10	1"	18'-6"					
H11	3/4"	23'-9"		C	6	1/2"	6'-3"
H12	1"	15'-9"		C	6	"	7'-0"
H13	1"	9'-6"		C	11	"	5'-0"
H14	1"	4'-0"		C	14	"	3'-9"
H15	24"	17'-3"		C	22	"	7'-3"
				C	7	"	6'-9"
				C	36	"	1'-3"
				C	7	"	5'-9"
				C	12	4	4'-9"
				C	10	4	5'-3"
Ch. X Conc. (SEC 139 HB-1)				Cu. Yds. 47.1			
Reinf. Bars (SEC 139 HB-1)				Lbs. 3800			
Structural Steel (SEC 139 HB-1 & HF-1)				Lbs. 990			



* Consists of floor plates, frames & fastenings
AROMA PARK RD. OVER F.A.R.T.E. 26
PROJECT UI 29 (P)
F.A.R.T.E. 26 - SEC. 139-HB-1-HF-1
KANKAKEE CO.
STA. 230+53.99

COMPUTED *Henry P. Boham*
CHECKED *Henry P. Boham*
DRAWN *ABP*
CHECKED *H.P.H.*
EXAMINED _____
PASSED _____
APPROVED *C.M. Kahanaw*
CHIEF HIGHWAY ENGINEER