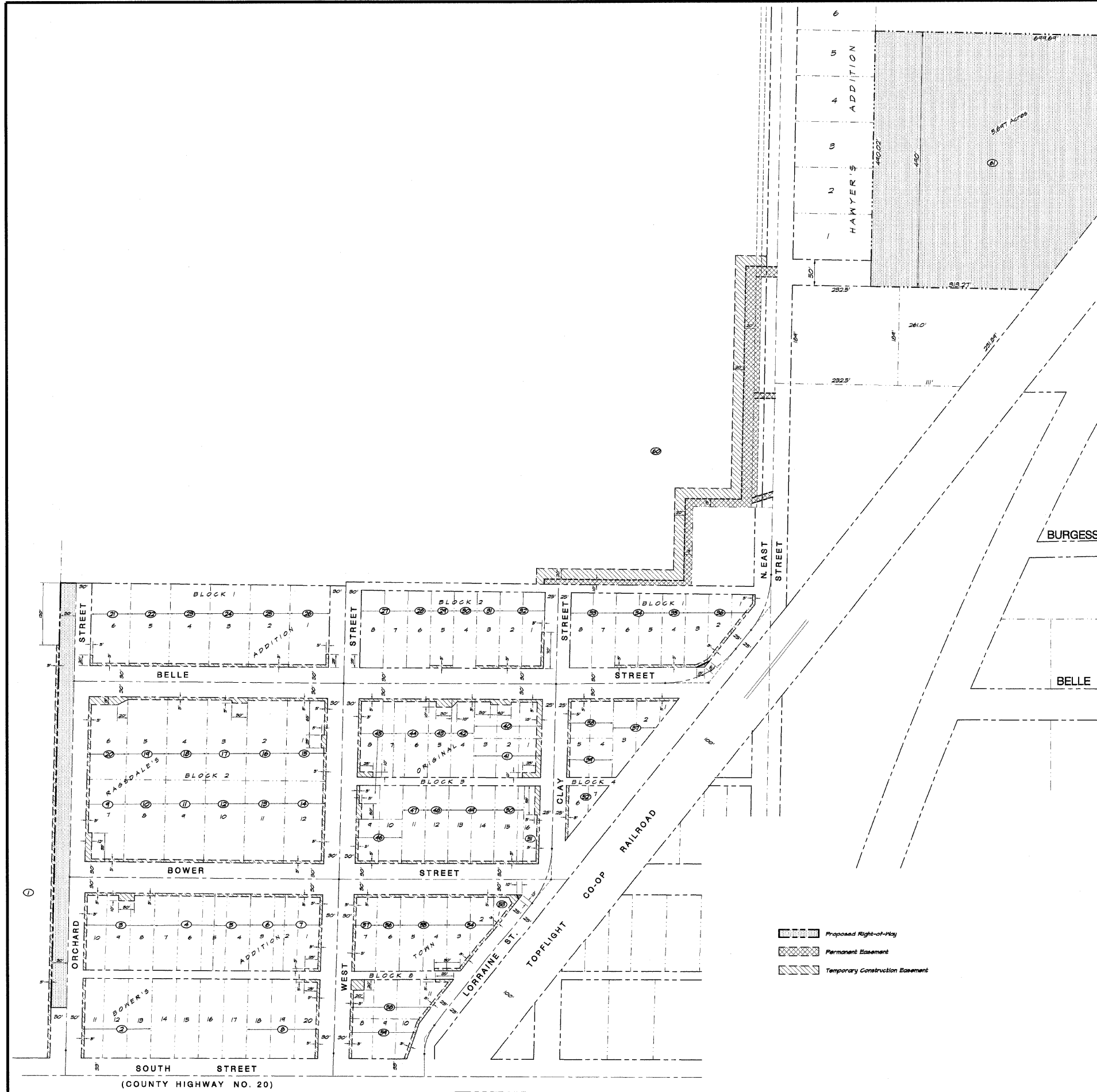


DESIGNED	SCALE	REVISIONS
MHP	1" = 100'	NO. BY DATE
DRWN	DATE	1 MHP 1-30-04
FLD	JOB NO.	2 MHP 4-4-04
XXX	JOB NO.	3 MHP 11-03-04
	JOB NO.	06-0404

**BAINBRIDGE & ASSOCIATES, INC.**  
 Consulting Engineers  
 1670 SOUTH TAYLORVILLE ROAD  
 DECATUR ILLINOIS  
 Illinois License 184-001266

**VILLAGE OF OREANA, ILLINOIS**  
 SAFE TRAIL PROJECT  
 STRIP MAP



Parcel No.	Owner	R.O.W. Taking	Permanent Easement	Temporary Easement
1.	Jeffery R. Jackson	24850 s.f. = 0.563 ac.		3468 s.f. = 0.079 ac.
2.	Misty Legue			150 s.f. = 0.011 ac.
3.	Helen E. Higgins			1720 s.f. = 0.039 ac.
4.	Caroline A. O'Brien & Bob Birtschl			15 s.f. = 0.000 ac.
5.	James R. Fear			345 s.f. = 0.008 ac.
6.	Harold L. Ballard			330 s.f. = 0.008 ac.
7.	Martha Dalton			1210 s.f. = 0.028 ac.
8.	Eric Edgesomba			875 s.f. = 0.020 ac.
9.	Robert E. & Edna Ryan			631 s.f. = 0.015 ac.
10.	Michael P. Sleeth			301 s.f. = 0.007 ac.
11.	Eileen Francis Sleeth			301 s.f. = 0.007 ac.
12.	Lori Slade			353 s.f. = 0.008 ac.
13.	Barry Karakachos c/o Kathy Charron			383 s.f. = 0.009 ac.
14.	Walter O. Connay			143 s.f. = 0.003 ac.
15.	Mark A. Daley			173 s.f. = 0.004 ac.
16.	Martha Ellen Dalton			363 s.f. = 0.008 ac.
17.	Charly Lavine Kerner			533 s.f. = 0.012 ac.
18.	Harold L. Fairweather			383 s.f. = 0.009 ac.
19.	Trent Oros			383 s.f. = 0.009 ac.
20.	James A. & Dorothy L. Trjpan			1740 s.f. = 0.040 ac.
21.	Jim Jones & Louise Parsons			430 s.f. = 0.010 ac.
22.	Lavita L. Parsons			383 s.f. = 0.009 ac.
23.	F. Charles & Rosemary Kolesar			383 s.f. = 0.009 ac.
24.	Fred D. & Virginia L. Shaffer			383 s.f. = 0.009 ac.
25.	James S. Clark			383 s.f. = 0.009 ac.
26.	Michael D. & Crystal Sunderland			463 s.f. = 0.011 ac.
27.	Marsha Park			
28.	Robert A. & Audrey Williams			
29.	Rickey L. Honell			200 s.f. = 0.005 ac.
30.	Catherine Keller			220 s.f. = 0.005 ac.
31.	Ronald D. & Jane A. Fogerson			325 s.f. = 0.007 ac.
32.	Wayne M. & Kathy Charron			
33.	Jackie L. Fair			440 s.f. = 0.010 ac.
34.	David Jacobson			301 s.f. = 0.007 ac.
35.	Paul A. Parent			375 s.f. = 0.009 ac.
36.	Marisa E. & Doris I. Kopper	875 s.f. = 0.020 ac.		1064 s.f. = 0.024 ac.
37.	Joe Creamer			612 s.f. = 0.014 ac.
38.	James E. Casey			740 s.f. = 0.017 ac.
39.	Mona & Hazel DeFere			375 s.f. = 0.009 ac.
40.	Jackie A. & Alice L. Woodruff			1530 s.f. = 0.035 ac.
41.	Rachael Alwood			1000 s.f. = 0.023 ac.
42.	David L. Nord			270 s.f. = 0.006 ac.
43.	Herbert D. Porter, Sr.			520 s.f. = 0.012 ac.
44.	Terry & Jerry Collins			330 s.f. = 0.008 ac.
45.	Dorinda A. & Travis Subbittfield			1780 s.f. = 0.041 ac.
46.	William O. & Ildene Ratliff			840 s.f. = 0.019 ac.
47.	Dick & Debra Morstatter			220 s.f. = 0.005 ac.
48.	Chester A. Crane			220 s.f. = 0.005 ac.
49.	Wayne M. & Kathy Charron			440 s.f. = 0.010 ac.
50.	Tenn of Whitmore			280 s.f. = 0.006 ac.
51.	Lagan Properties, LLC			150 s.f. = 0.004 ac.
52.	Carol Klepzig			513 s.f. = 0.012 ac.
53.	Village of Oreana	342 s.f. = 0.008 ac.		644 s.f. = 0.015 ac.
54.	Douglas & Valentina Logan			1034 s.f. = 0.023 ac.
55.	Jeff Tussing			440 s.f. = 0.010 ac.
56.	Mindy Griffith			220 s.f. = 0.005 ac.
57.	Tammy L. Stephens			445 s.f. = 0.010 ac.
58.	Arin Seabright			1416 s.f. = 0.032 ac.
59.	John M. & Helvaine Fornear			754 s.f. = 0.017 ac.
60.	John W. & Paula S. Hill		17244 s.f. = 0.397 ac.	28191 s.f. = 0.647 ac.
61.	Jane H. McEvoy			
TOTAL		248175 s.f. = 5.641 ac.	17244 s.f. = 0.397 ac.	67044 s.f. = 1.534 ac.

\* Fee Simple Taking

Proposed Right-of-Way  
 Permanent Easement  
 Temporary Construction Easement