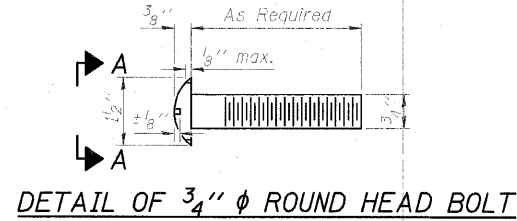
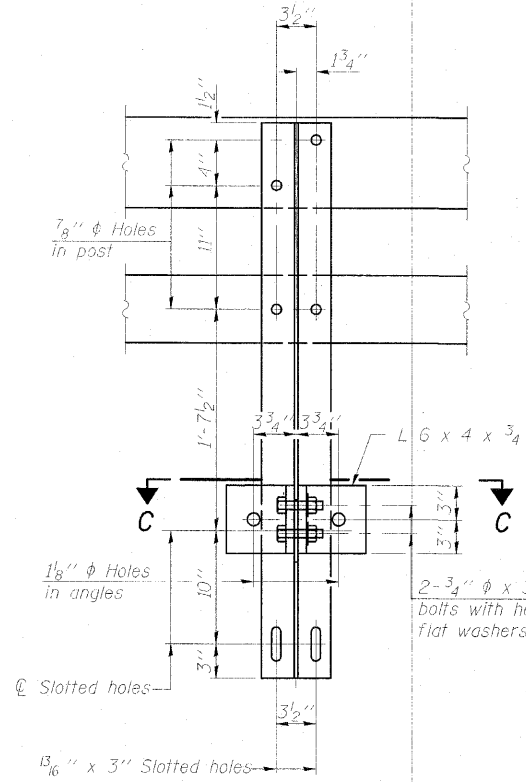


0254408B003.dwg 5/26/2010 5:53:45 AM H45

STATE OF ILLINOIS  
DEPARTMENT OF TRANSPORTATION

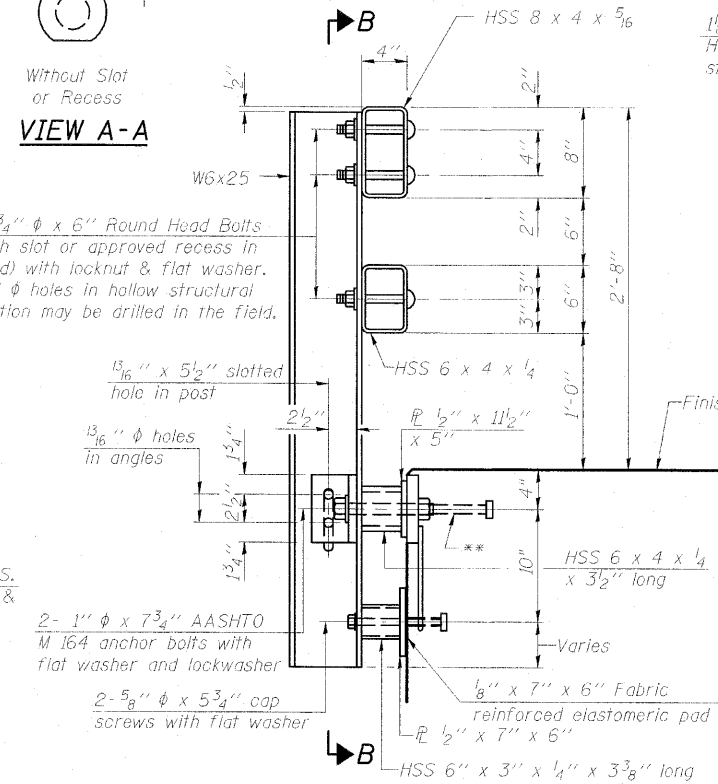


4-3/4"  $\phi$  x 6" Round Head Bolts  
(With slot or approved recess in head) with locknut & flat washer.  
7/8"  $\phi$  holes in hollow structural section may be drilled in the field.

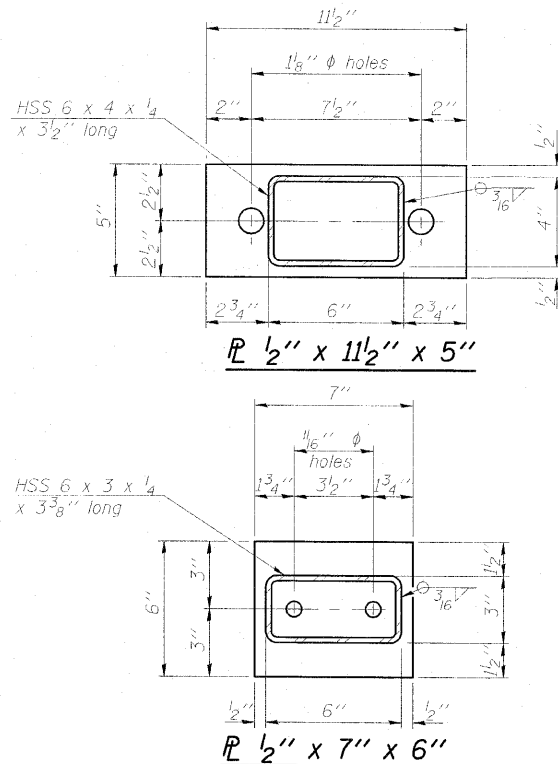


SECTION B-B

SECTION C-C

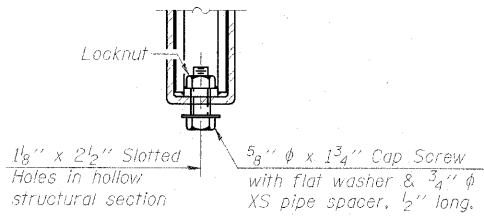


SECTION AT RAIL POST

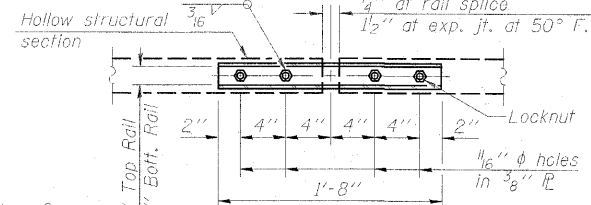


ANCHOR DEVICE

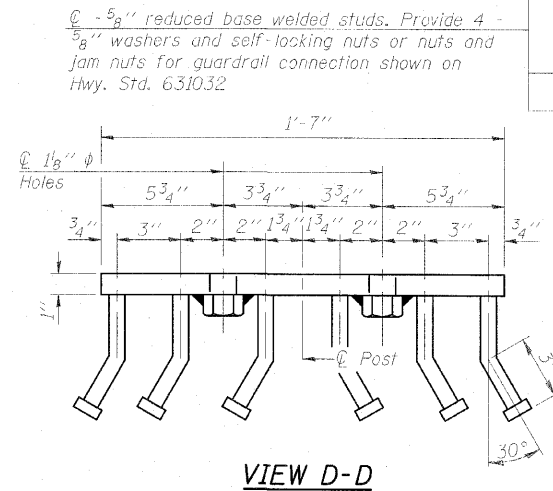
\*Threaded areas shall be plugged or blocked off during casting of deck. Galvanized after fabrication.



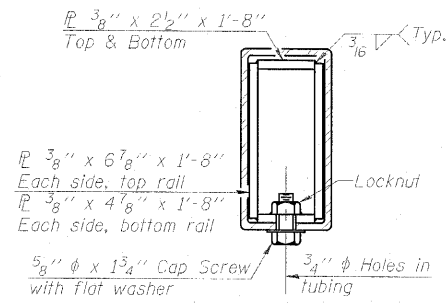
RAIL SPLICE CONNECTION  
AT EXPANSION JT.



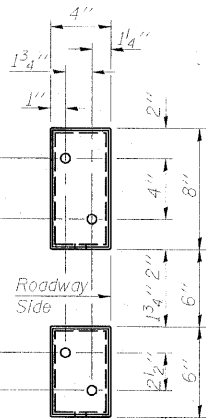
PLAN-BOTT. SPLICE R  
TYPICAL



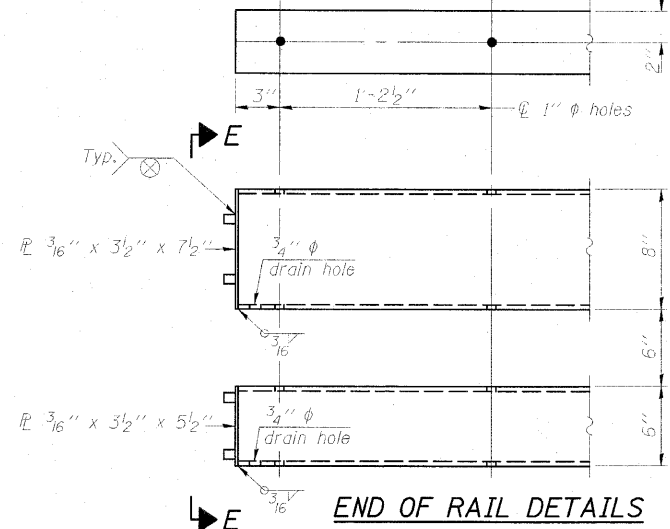
VIEW D-D



SECTION AT  
RAIL SPLICE



VIEW E-E



END OF RAIL DETAILS

Notes:  
All field drilled holes shall be coated with an approved zinc rich paint before erection.  
For multi-span bridges, sufficient 1/4" x 6" x 1'-2" galvanized steel shims shall be provided to align rail between adjacent spans. Cost included with Steel Railing, Type SM.  
Steel rail elements shall be galvanized according to Article 509.05 of the Standard Specifications.  
\*\* The studs of the anchor devices shall be placed below the top reinforcement bars and the outermost longitudinal reinforcement bar shall be placed directly above the studs of the rail post anchor device.

BILL OF MATERIAL

Item	Unit	Quantity
Steel Railing, Type SM	Foot	995

STEEL RAILING, TYPE SM  
STRUCTURE NO. 074-0085

SHEET NO. 12 25 SHEETS	F.A.S. RTE.	SECTION	COUNTY	TOTAL SHEETS	SHEET NO.
	535	08-00255-00-BR	PIATT	62	36
CONTRACT NO. 91436					
FED. ROAD DIST. NO. ILLINOIS FED. AID PROJECT					

**ESCA**  
CONSULTANTS, INC.

DESIGNED BY:	MTD	11/09
DRAWN BY:	DWH	11/09
CHECKED BY:	MTD	11/09
APPROVED BY:	RDP	05/10

(6'-3" Maximum Post Spacing)