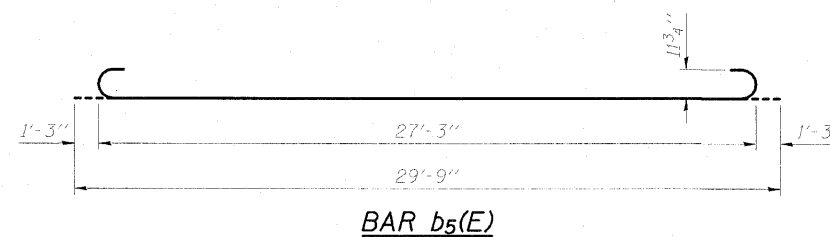
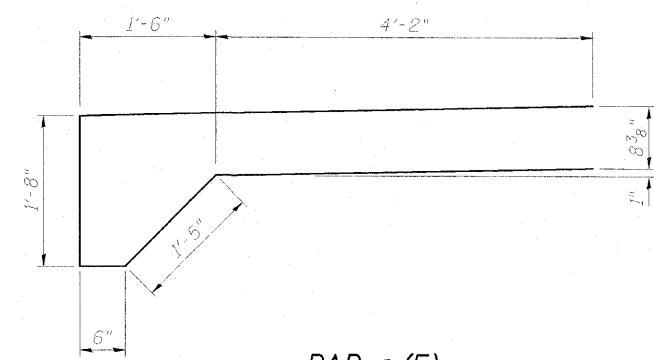
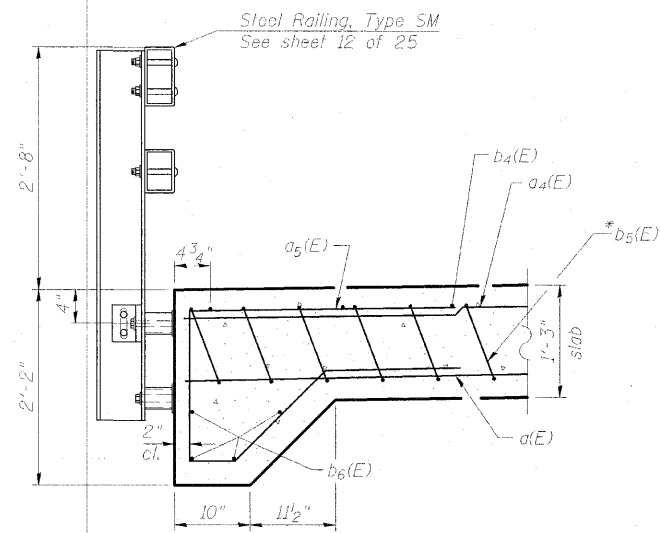
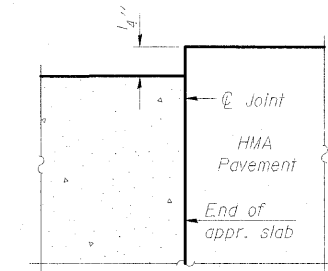
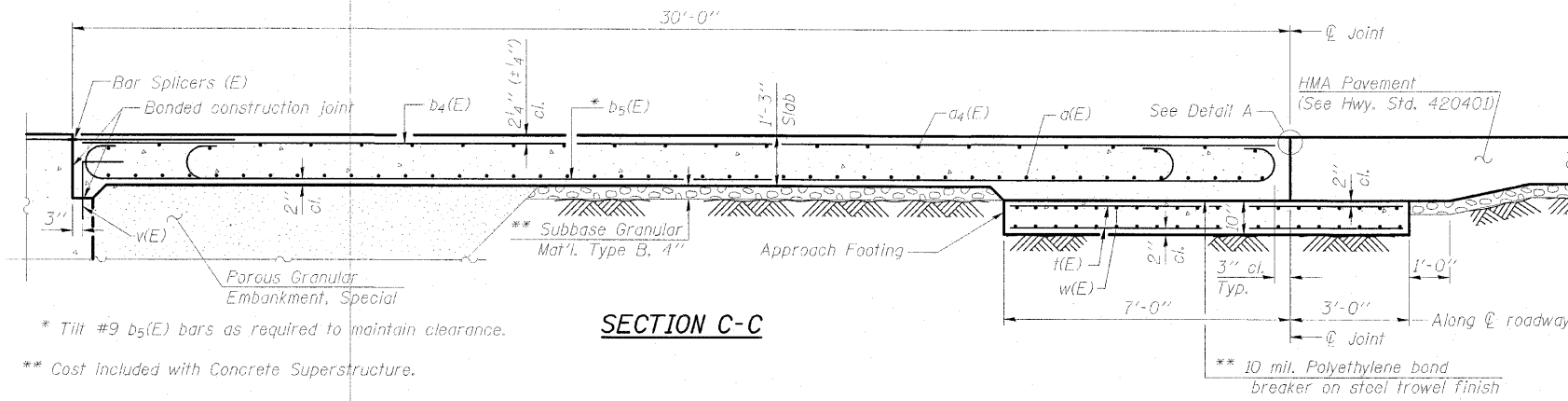


STATE OF ILLINOIS
DEPARTMENT OF TRANSPORTATION

Notes:
 Approach slab concrete shall be paid for as Concrete Superstructure.
 Approach footing concrete shall be paid for as Concrete Structures.
 Reinforcement shall be paid for as Reinforcement Bars, Epoxy Coated.
 For v(E) bar details, see sheet 17 of 25.
 The approach footing maximum applied service bearing pressure (Q_{max}) = 2.0 ksf.
 For Bar Splicer details, see sheet 22 of 25.
 Cost of excavation for approach footing included with Concrete Structures.
 For Porous Granular Embankment, Special and drainage treatment details, see sheet 2 of 25.



**TWO APPROACHES
BILL OF MATERIAL**

| Bar | No. | Size | Length | Shape |
|----------------------------------|-----|------|---------|--------|
| a ₁ (E) | 92 | #5 | 29'-8" | — |
| a ₄ (E) | 50 | #4 | 29'-8" | — |
| a ₅ (E) | 144 | #5 | 13'-5" | U |
| b ₄ (E) | 50 | #4 | 29'-8" | — |
| b ₅ (E) | 144 | #9 | 29'-9" | U |
| b ₆ (E) | 16 | #8 | 22'-2" | — |
| l(E) | 120 | #4 | 9'-8" | — |
| w(E) | 80 | #5 | 29'-8" | — |
| Concrete Structures | | | Cu. Yd. | 18.5 |
| Concrete Superstructure | | | Cu. Yd. | 91.6 |
| Reinforcement Bars, Epoxy Coated | | | Pound | 25,610 |

(Sheet 2 of 2)
**BRIDGE APPROACH SLAB DETAILS
STRUCTURE NO. 074-0085**

ESCA
CONSULTANTS, INC.
 DESIGNED BY: MTD 11/09
 DRAWN BY: RJT/HAS 11/09
 CHECKED BY: MTD 11/09
 APPROVED BY: RDP 05/10

| | | | | | |
|---|-------------|----------------|--------|--------------|-----------|
| SHEET NO. 11 25 SHEETS | F.A.S. RTE. | SECTION | COUNTY | TOTAL SHEETS | SHEET NO. |
| | 535 | 08-00255-00-BR | PIATT | 62 | 35 |
| CONTRACT NO. 91436 | | | | | |
| FED. ROAD DIST. NO. ILLINOIS FED. AID PROJECT | | | | | |