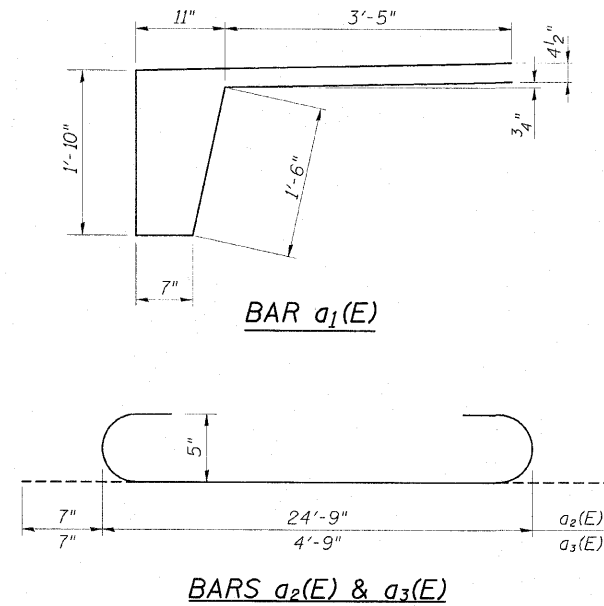
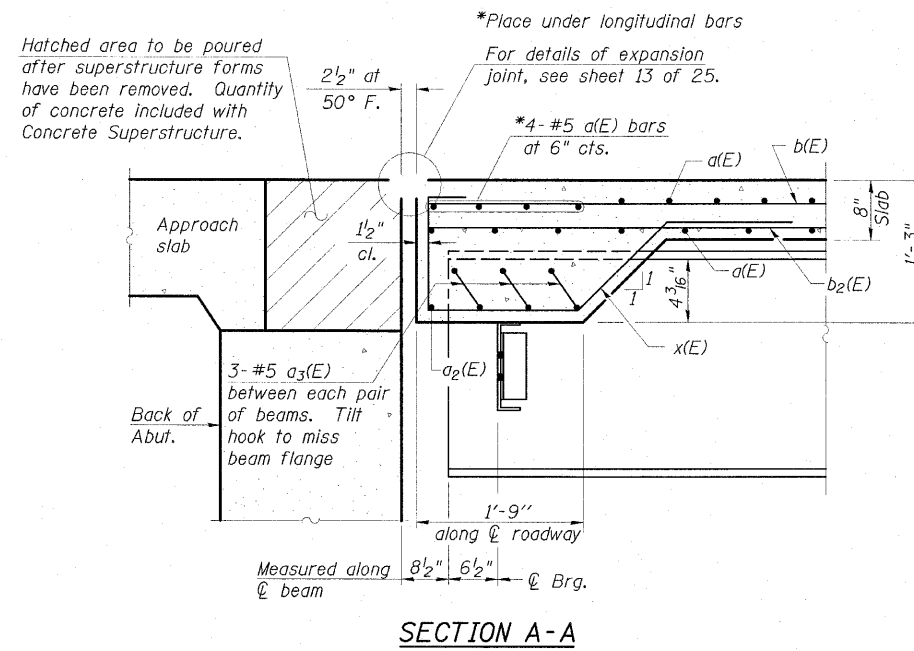
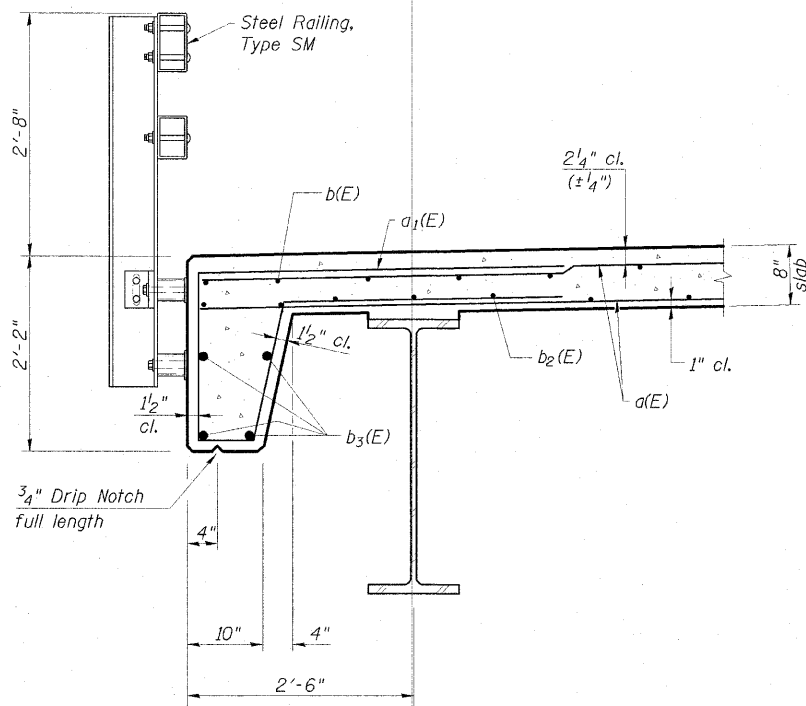
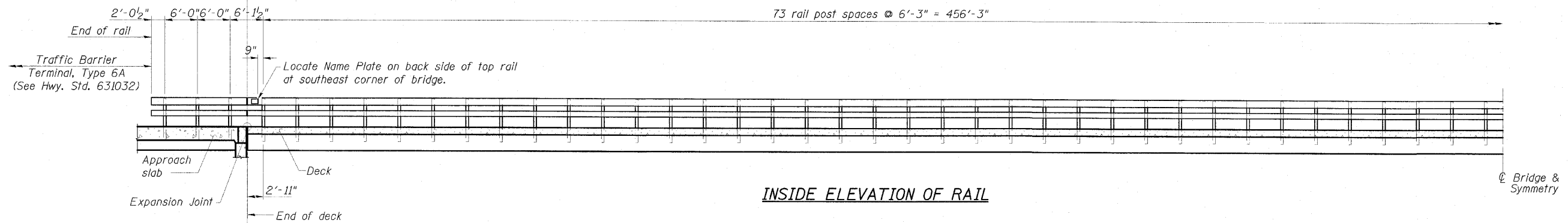
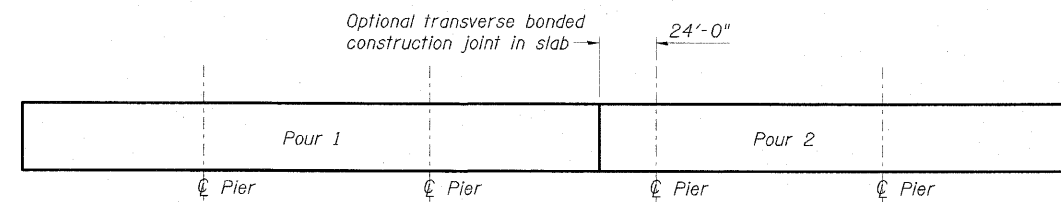


STATE OF ILLINOIS
DEPARTMENT OF TRANSPORTATION



SUPERSTRUCTURE
BILL OF MATERIAL

Bar	No.	Size	Length	Shape
a(E)	1348	#5	29'-8"	
a ₁ (E)	1586	#5	11'-8"	
a ₂ (E)	2	#5	25'-11"	
a ₃ (E)	30	#5	5'-11"	
b(E)	527	#5	30'-3"	
b ₁ (E)	360	#6	21'-1"	
b ₂ (E)	468	#5	28'-9"	
b ₃ (E)	144	#8	32'-1"	
x(E)	50	#5	6'-5"	
Concrete Superstructure			Cu. Yd.	418.1
Reinforcement Bars, Epoxy Coated			Pound	115,980



DECK POURING SEQUENCE

(Pouring sequence may start from either end.)

- When the deck pour is stopped for the day at the transverse bonded construction joint in the deck pouring sequence as shown, the next pour shall not be made until both of the following are met:
1. At least 72 hours shall have elapsed from the end of the previous pour.
 2. The concrete strength shall have attained a minimum flexural strength of 650 psi or a minimum compressive strength of 3500 psi.

SUPERSTRUCTURE DETAILS
STRUCTURE NO. 074-0085

ESCA
CONSULTANTS, INC.

DESIGNED BY: MTD 11/09

DRAWN BY: HAS/DWH 11/09

CHECKED BY: MTD 11/09

APPROVED BY: RDP 05/10

SHEET NO. 9 25 SHEETS	F.A.S. RTE.	SECTION	COUNTY	TOTAL SHEETS	SHEET NO.
	535	08-00255-00-BR	PIATT	62	33
CONTRACT NO. 91436					
FED. ROAD DIST. NO. ILLINOIS FED. AID PROJECT					