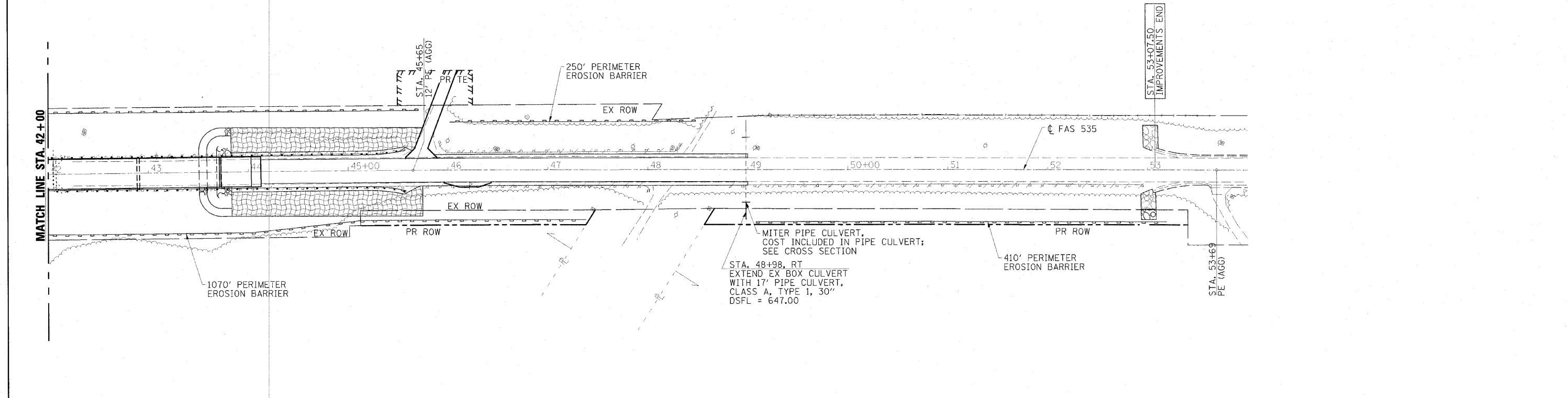
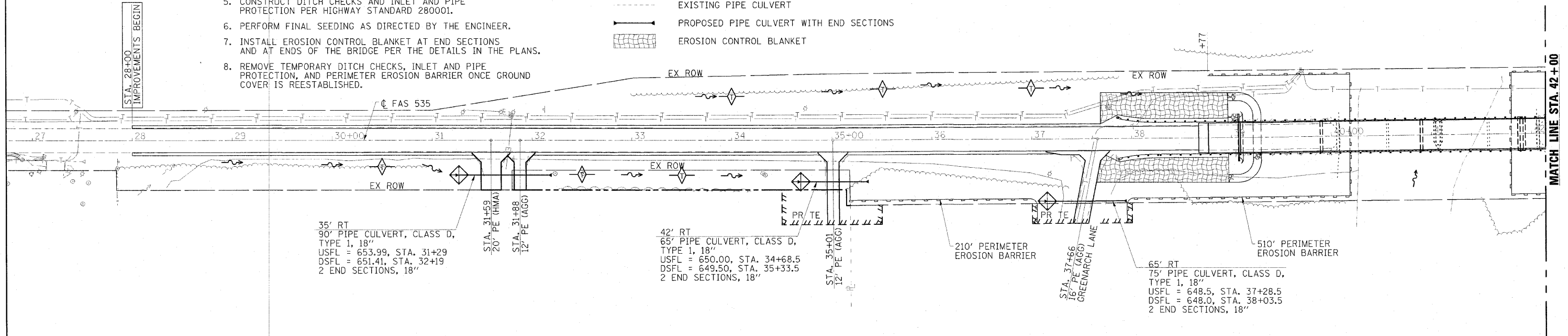


INTENDED SEQUENCE

1. PERIMETER EROSION BARRIER SHALL BE INSTALLED IN ACCORDANCE WITH HIGHWAY STANDARD 280001, PRIOR TO EARTH DISTURBING ACTIVITIES.
2. CONSTRUCT TEMPORARY ACCESS ROAD, TEMPORARY PIPE CULVERTS, AND ROADWAY EMBANKMENT.
3. USE TEMPORARY EROSION CONTROL SEEDING AS DIRECTED BY THE ENGINEER.
4. REMOVE TEMPORARY ACCESS ROAD AND TEMPORARY PIPE CULVERTS. CONSTRUCT DITCHES AND PIPE CULVERTS.
5. CONSTRUCT DITCH CHECKS AND INLET AND PIPE PROTECTION PER HIGHWAY STANDARD 280001.
6. PERFORM FINAL SEEDING AS DIRECTED BY THE ENGINEER.
7. INSTALL EROSION CONTROL BLANKET AT END SECTIONS AND AT ENDS OF THE BRIDGE PER THE DETAILS IN THE PLANS.
8. REMOVE TEMPORARY DITCH CHECKS, INLET AND PIPE PROTECTION, AND PERIMETER EROSION BARRIER ONCE GROUND COVER IS REESTABLISHED.

LEGEND

- PROPOSED DITCH/SWALE TO BE GRADED TO ELEVATIONS SHOWN ON CROSS SECTIONS
- PERIMETER EROSION BARRIER
- INLET AND PIPE PROTECTION
- TEMPORARY DITCH CHECK
- STONE RIPRAP CLASS A4
- EXISTING PIPE CULVERT
- PROPOSED PIPE CULVERT WITH END SECTIONS
- EROSION CONTROL BLANKET



| | | |
|----------------------------------|-----------------|-----------|
| USER NAME = HAS | DESIGNED = ELH | REVISED = |
| PLOT SCALE = 0.2791" / IN. | DRAWN = HAS | REVISED = |
| PLOT DATE = 5/26/2018 7:47:41 AM | CHECKED = ELH | REVISED = |
| | DATE = 05/12/10 | REVISED = |

STATE OF ILLINOIS
DEPARTMENT OF TRANSPORTATION

FAS 535 EROSION CONTROL AND DRAINAGE PLAN
SCALE: 1"=50'-0" SHEET NO. 1 OF 1 SHEETS STA. 27+00 TO STA. 54+00

| F.A.S. RTE. | SECTION | COUNTY | TOTAL SHEETS | SHEET NO. |
|---------------------|----------------|---------------------------|--------------|-----------|
| 535 | 08-00225-00-BR | PIATT | 62 | 20 |
| FED. ROAD DIST. NO. | | ILLINOIS FED. AID PROJECT | | |
| | | CONTRACT NO. 91436 | | |