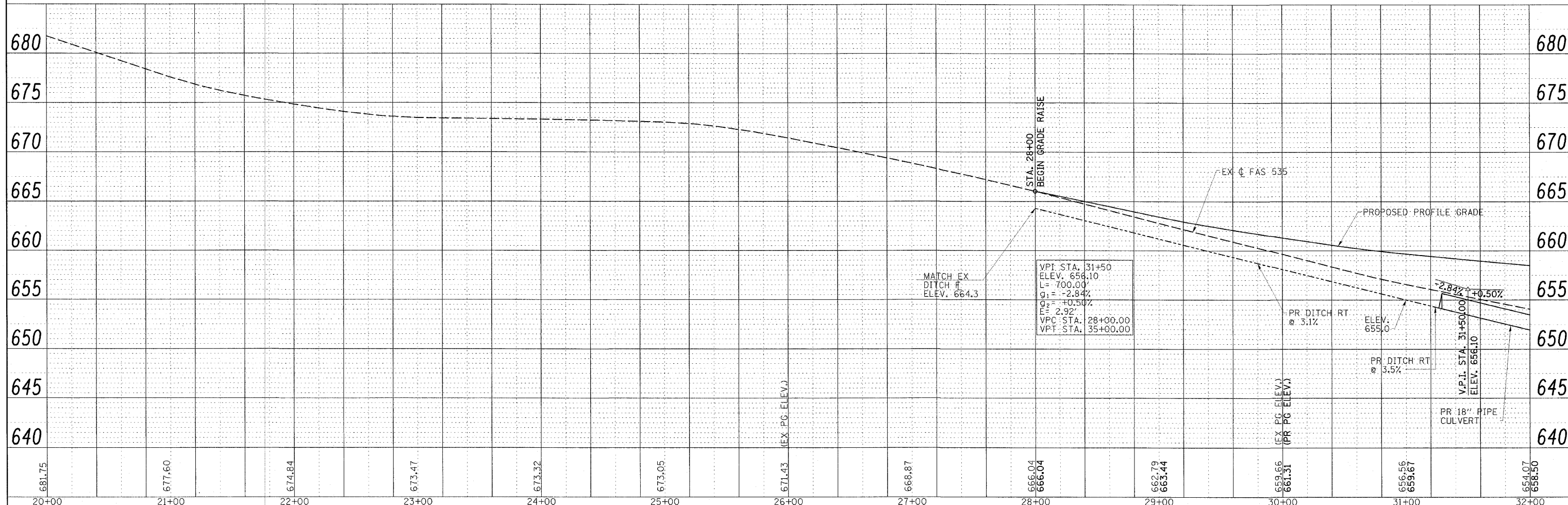
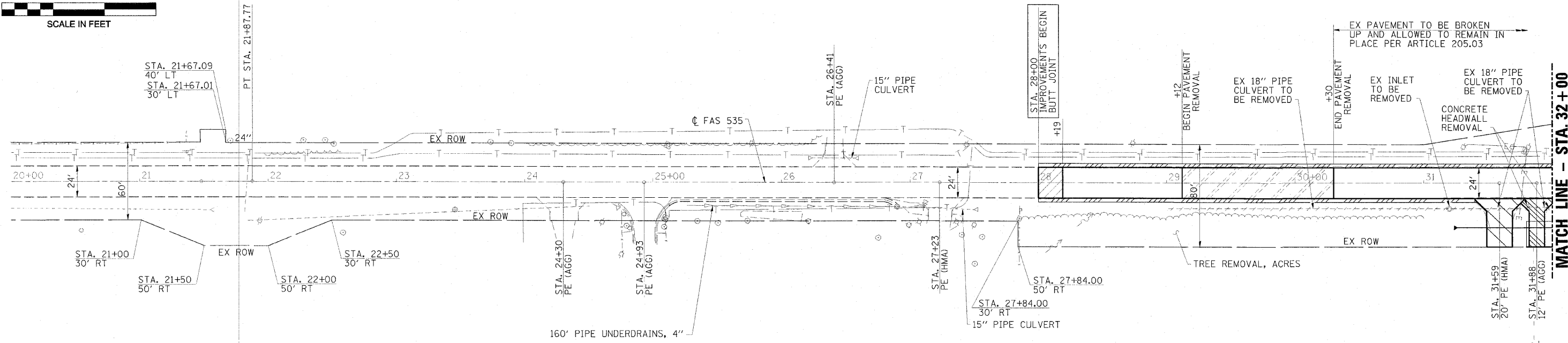


PLAN	SURVEYED	DATE
	PLOTTED	
	NOTES CHECKED	
	DATE	
	BY	
	FILE NAME	
	NO.	

PROFILE	SURVEYED	DATE
	PLOTTED	
	NOTES CHECKED	
	DATE	
	BY	
	FILE NAME	
	NO.	



FILE NAME = Z4401F02.dgn	USER NAME = HAS	DESIGNED - ELH	REVISED -	STATE OF ILLINOIS DEPARTMENT OF TRANSPORTATION	FAS 535 (SHADY REST ROAD) PLAN & PROFILE	F.A.S. RTE. 535	SECTION 08-00255-00-BR	COUNTY PIATT	TOTAL SHEETS 62	SHEET NO. 15		
SCALE: (HORIZ) 1"=40' (VERT) 1"=5'	PLLOT DATE = 5/26/2010 8:22:48 AM	DRAWN - HAS	REVISED -			SCALE: 1"=40'	SHEET NO. 1 OF 3 SHEETS	STA. 20+00 TO STA. 32+00	CONTRACT NO. 91436			
		CHECKED - ELH	REVISED -			FED. ROAD DIST. NO. ILLINOIS FED. AID PROJECT						
		DATE - 05/12/10	REVISED -									

MATCH LINE - STA. 32+00
SEE SHT. 16 FOR CONT.