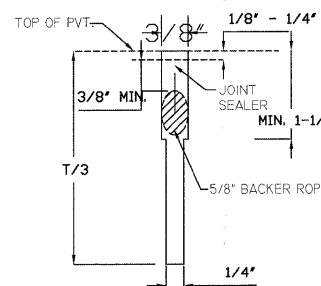


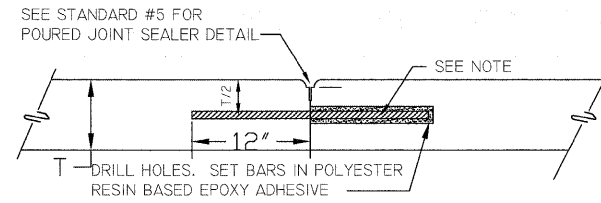
NOTES:  
HOLES SHALL BE DRILLED IN PREFORMED EXPANSION JOINT FILLER.  
NO SLOTS OR GAPS WILL BE ALLOWED.  
DOWEL BARS SHALL BE GREASED TO THE SATISFACTION OF THE ENGINEER.



1. AFTER SAWING FLUSH JOINT WITH WATER OR AIR.
2. CLEAN BY SAND BLASTING UNTIL SURFACES ARE FREE OF SAWCUTTING FINES
3. JUST PRIOR TO INSTALLATION OF BACKER ROPE, BLOW WITH OIL AND WATER FREE COMPRESSED AIR TO ELIMINATE SAND AND WATER.

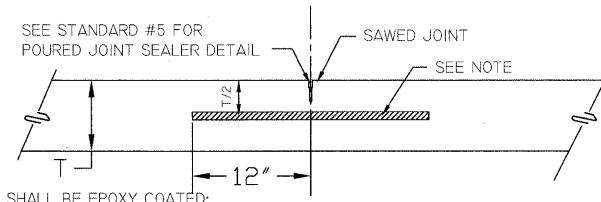
CONSTRUCTION JOINT & EXPANSION JOINT DETAIL

DATE	CITY OF MOLINE STANDARD	#5
12/05		



BARS SHALL BE EPOXY COATED;  
#6 DEFORMED, 24" LG. AT 24" CTRS. FOR LONG CONST. JT.  
#6 DEFORMED, 24" LG. AT 18" CTRS. FOR TRANS. CONST. JT.

CONSTRUCTION JOINT

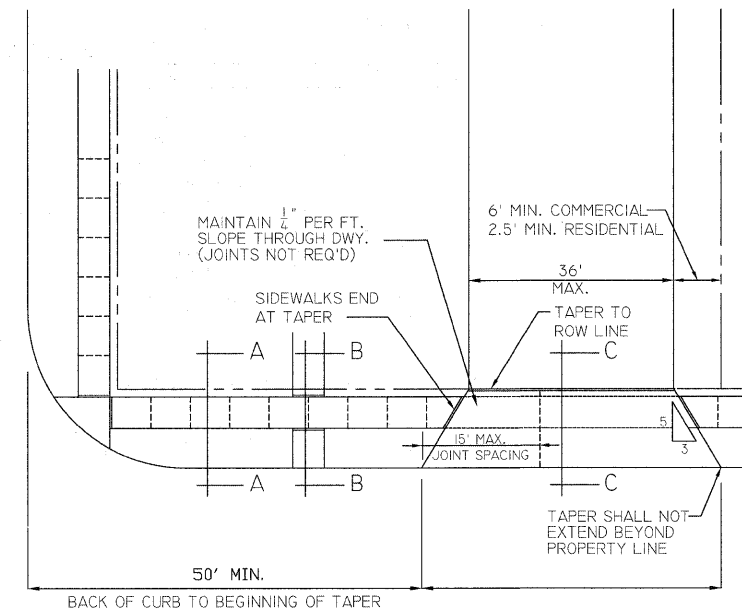


BARS SHALL BE EPOXY COATED;  
#6 DEFORMED 24" LG. AT 24" CTRS.

SAWED LONGITUDINAL CONTRACTION JOINT

LONGITUDINAL JOINT & TRANSVERSE JOINT DETAIL

DATE	CITY OF MOLINE STANDARD	#6
12/05		



----- CONTRACTION JOINT  
5' MAXIMUM SPACING  
- - - - - 1/2" EXPANSION JOINT  
100' MAXIMUM SPACING  
AND AT OTHER SIDEWALKS  
AND PROPERTY LINES

RESIDENTIAL/COMMERCIAL DRIVEWAY & SIDEWALK DETAILS

RESIDENTIAL/COMMERCIAL DRIVEWAY & SIDEWALK DETAILS

DATE	CITY OF MOLINE STANDARD	#7
1/04		

**SHIVE HATTERY**  
Cedar Rapids, IA · Iowa City, IA · Des Moines, IA  
Moline, IL · Bloomington, IL · Chicago, IL  
SHIVE-HATTERY, INC. 1701 RIVER DRIVE, SUITE 200 MOLINE, IL 61265  
PHONE (309) 764-7650 FAX (309) 764-8616  
http://www.shive-hattery.com  
ILLINOIS FIRM NUMBER: 184-000214

FILE NAME =	USER NAME = \$USER\$	DESIGNED - PHM	REVISED -
\$FILEL\$		DRAWN - MAC	REVISED -
	PLOT SCALE = \$SCALE\$	CHECKED - 07-06-10	REVISED -
	PLOT DATE = \$DATE\$	DATE - 07-06-10	REVISED -

STATE OF ILLINOIS  
DEPARTMENT OF TRANSPORTATION

CITY OF MOLINE DETAILS

SCALE: SHEET NO. 28 OF 30 SHEETS STA. TO STA.

F.A.U. RTE.	SECTION	COUNTY	TOTAL SHEETS	SHEET NO.
5756	06-00234-00-LS	ROCK ISLAND	30	28
CONTRACT NO. 85517				
FED. ROAD DIST. NO. 2 ILLINOIS FED. AID PROJECT				