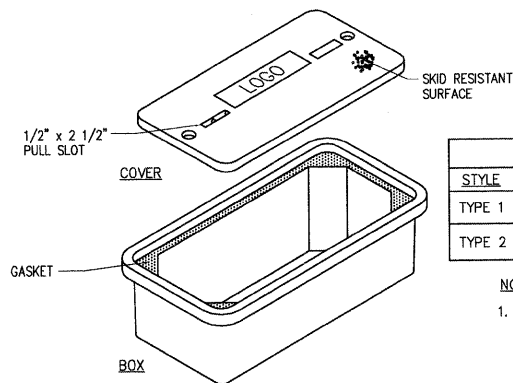


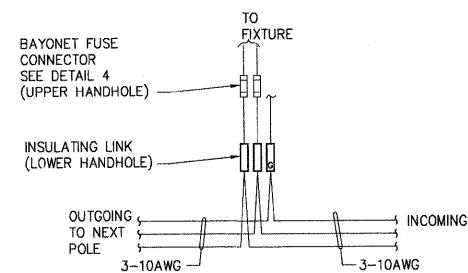
8 240V LIGHTING CONTROL DETAIL
NOT TO SCALE



PULLBOX SCHEDULE		
STYLE	PLAN MARK	SIZE
TYPE 1	①	12 x 12
TYPE 2	②	13 x 24

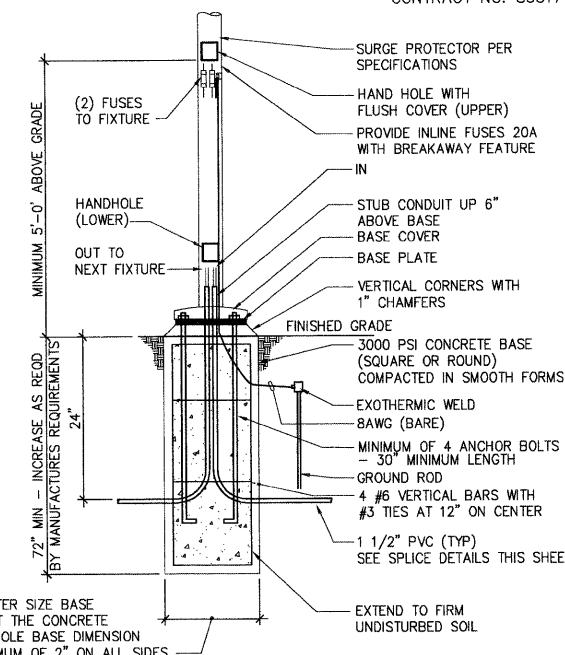
NOTES:
1. COVER LOGO PER EQUIPMENT SCHEDULE (OR AS APPROVED BY ENGINEER)

6 GASKETED PULL BOX ASSEMBLY DETAIL
NOT TO SCALE

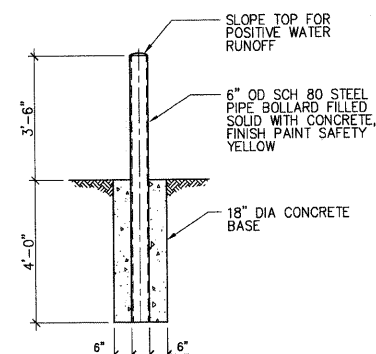


NOTES:
1. PROVIDE SUFFICIENT CONDUCTOR SLACK TO PERMIT WITHDRAWAL OF THE CONDUCTOR THROUGH THE HANDHOLE.
2. CONNECTIONS AS SHOWN ON DRAWINGS.

3 SPLICE DETAIL 2
NOT TO SCALE

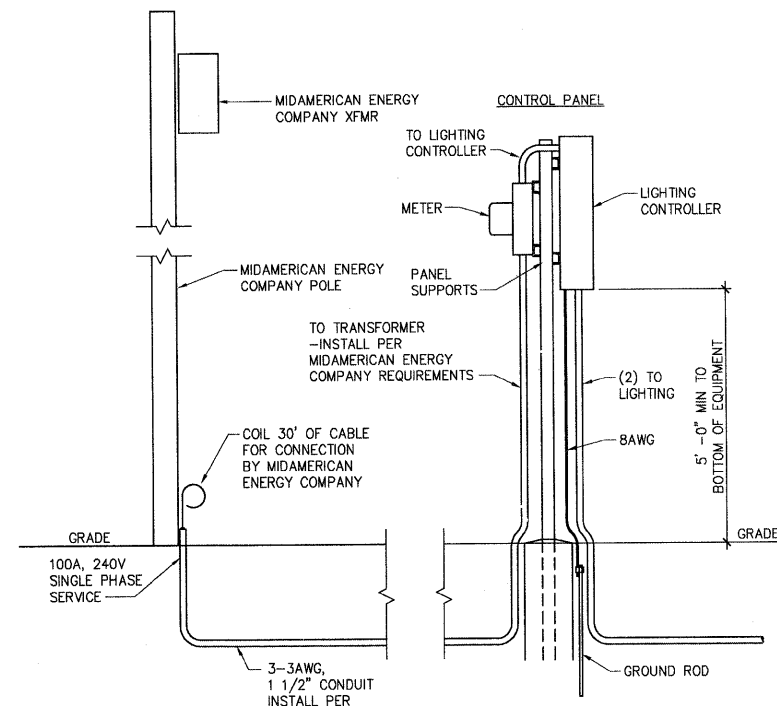


1 LIGHT POLE BASE DETAIL
NOT TO SCALE

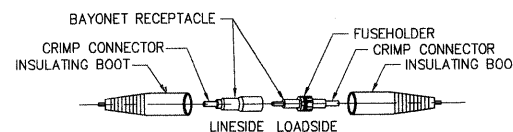


NOTE: INCIDENTAL TO ELECTRICAL SYSTEM COMPLETE

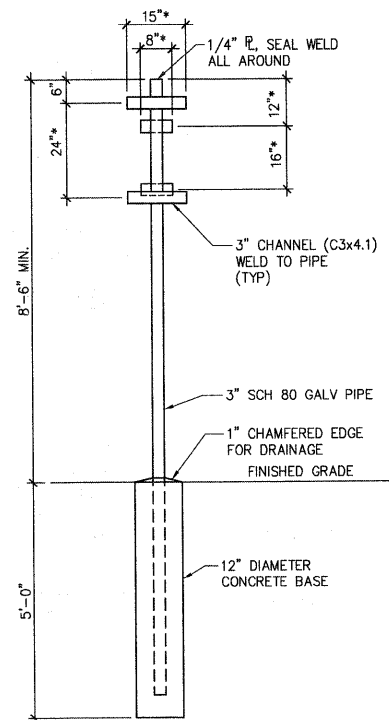
9 BOLLARD DETAIL
NTS 02840-C-01



7 240V, 3 WIRE 100A SERVICE DETAIL (TYPICAL FOR 3 PLACES)
NOT TO SCALE

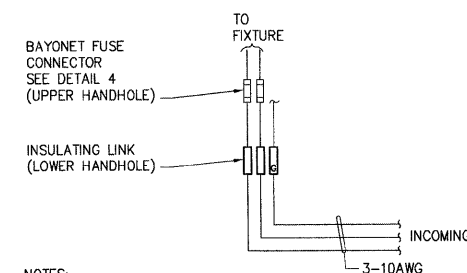


4 BAYONET FUSE CONNECTOR DETAIL
NOT TO SCALE



NOTES:
1. DIMENSIONS WITH "*" ARE APPROXIMATE. COORDINATE WITH UTILITY COMPANY AND ELECTRICAL CONTRACTOR FOR EXACT DIMENSIONS PER EQUIPMENT REQUIREMENTS.
2. PRIME AND PAINT SURFACES OF PANEL AND FRAME. COLOR TO BE DARK GREEN.

5 EQUIPMENT MOUNTING FRAME DETAIL (3 REQUIRED)
NOT TO SCALE

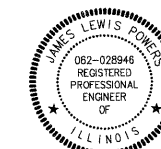


NOTES:
1. PROVIDE SUFFICIENT CONDUCTOR SLACK TO PERMIT WITHDRAWAL OF THE CONDUCTOR THROUGH THE HANDHOLE.
2. CONNECTIONS AS SHOWN ON DRAWINGS.

2 SPLICE DETAIL 1
NOT TO SCALE

ELECTRICAL NOTES

- ELECTRICAL WORK SHALL BE INSTALLED PER NATIONAL ELECTRICAL CODE.
- EACH CONDUIT SHALL INCLUDE A GROUND UNLESS NOTED OTHERWISE.
- CONDUITS SHALL BE 1 1/2" PVC UNLESS NOTED OTHERWISE.
- WIRE TYPE - USE. (10AWG UNLESS NOTED OTHERWISE)
- COORDINATE LOCATIONS OF ELECTRICAL EQUIPMENT, CONDUIT AND WIRING WITH MIDAMERICAN ENERGY COMPANY, EXISTING SITE CONDITIONS AND CITY OF MOLINE.
- ELECTRICAL DRAWINGS NOT-TO-SCALE. SEE CIVIL DRAWINGS FOR POLE AND EQUIPMENT LOCATIONS.
- ELECTRICAL WORK SHALL BE IN ACCORDANCE WITH ILLINOIS DEPARTMENT OF TRANSPORTATION STANDARD SPECIFICATIONS FOR ROAD AND BRIDGE CONSTRUCTION AND ELECTRICAL STANDARDS MANUAL AND THE DECORATIVE LIGHTING PLANS. THIS WORK WILL BE MEASURED AS A LUMP SUM ITEM AND PAYMENT WILL BE MADE FOR "ELECTRICAL SYSTEM COMPLETE".



Signature: *James Lewis Powers*
Date: 7/26/10
Exp. Date: 11-30-11

10 WARP9 LED
NTS

SHIVE HATTERY
Cedar Rapids, IA \ Iowa City, IA \ Des Moines, IA
Moline, IL \ Bloomington, IL \ Chicago, IL
SHIVE-HATTERY, INC. 1701 RIVER DRIVE, SUITE 200 MOLINE, IL 61265
PHONE (309) 764-7650 FAX (309) 764-8616
http://www.shive-hattery.com
ILLINOIS FIRM NUMBER: 184-000214

ITEM	DESCRIPTION	PART #
DECORATIVE LIGHT FIXTURE A	175 WATT LED STREET LIGHT, 16" ROUND STEEL POLE WITH HANDLE AT 5' (SIDEWALK SIDE) AND HANDHOLE AT BASE (STREET SIDE). LIGHT DISTRIBUTION TYPE III. 18" BANNER ARMS.	KIM LIGHTING: WP9 L E"X"-LSK-240-SG-DF-TB/VSF-1SA/RA6000716/STEALTH GRAY-M-BC
DECORATIVE LIGHT FIXTURE B	175 WATT LED STREET LIGHT, 16" ROUND STEEL POLE WITH HANDLE AT 5' (SIDEWALK SIDE) AND HANDHOLE AT BASE (STREET SIDE). LIGHT DISTRIBUTION TYPE II. 18" BANNER ARMS.	KIM LIGHTING: WP9 L E"X"-LSK-240-SG-DF-TB/VSF-1SA/RA6000716/STEALTH GRAY-M-BC
PULLBOX TYPE 1	PULLBOX W/COVER LOGO 'LIGHTING',	QUAZITE STRONGWELL 12"x12" PC1212BA12 W/PC1212CA00 COVER OR APPROVED EQUIVALENT
PULLBOX TYPE 2	PULLBOX W/COVER LOGO 'LIGHTING',	QUAZITE STRONGWELL 13"x24" PC1324BA12 W/PC1324CA00 COVER OR APPROVED EQUIVALENT

FILE NAME = \$FILE\$	USER NAME = \$USER\$	DESIGNED - JLP	REVISED -
		DRAWN - DDL	REVISED -
		CHECKED - 07-06-10	REVISED -
		DATE - 07-06-10	REVISED -

STATE OF ILLINOIS
DEPARTMENT OF TRANSPORTATION

RIVER DRIVE DECORATIVE LIGHTING PLAN DETAILS

SCALE: NONE SHEET NO. 26 OF 30 SHEETS STA. - TO STA. -

F.A.U. RTE.	SECTION	COUNTY	TOTAL SHEETS	SHEET NO.
5756	06-00234-00-LS	ROCK ISLAND	30	26
CONTRACT NO. 85517				
FED. ROAD DIST. NO. 2 ILLINOIS FED. AID PROJECT				