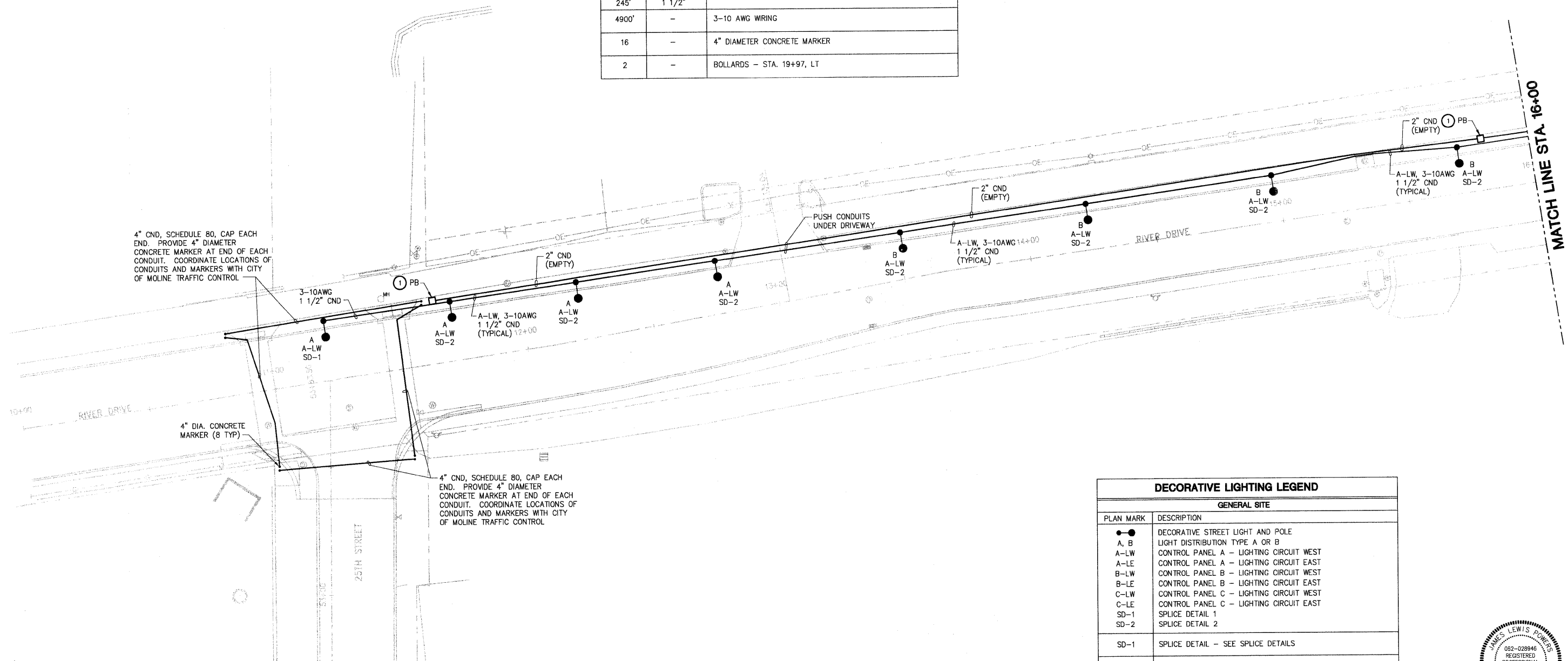
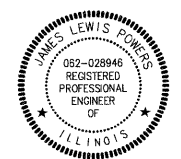


DECORATIVE LIGHTING SUMMARY OF QUANTITIES "FOR REFERENCE ONLY"		
QUANTITY	TYPE	DESCRIPTION
3	-	ELECTRIC SERVICE (240V, 100A, SINGLE PHASE) COMPLETE CONTROL PANEL LOCATIONS A, B AND C
3	-	LIGHTING CONTROL AND METERING ON SUPPORT COMPLETE WITH WIRING, CONDUIT, GROUND ROD, EXCAVATION AND FOUNDATION. CONTROL PANELS A, B AND C
8 47	TYPE A TYPE B	LIGHT POLE WITH LUMINAIRE (TYPE A OR B LIGHT DISTRIBUTION) COMPLETE WITH WIRING, SURGE PROTECTION, FUSES AND SPLICES.
55	-	LIGHT POLE FOUNDATION COMPLETE WITH EXCAVATION, CONDUIT, GROUND WIRE AND GROUND ROD.
13 3	TYPE 1 TYPE 2	PULLBOX
500' 3250' 4130'	4" 2" 1 1/2"	TRENCHED CONDUIT
245' 245'	2" 1 1/2"	PUSHED CONDUIT
4900'	-	3-10 AWG WRING
16	-	4" DIAMETER CONCRETE MARKER
2	-	BOLLARDS - STA. 19+97, LT



DECORATIVE LIGHTING LEGEND	
GENERAL SITE	
PLAN MARK	DESCRIPTION
●●	DECORATIVE STREET LIGHT AND POLE
A, B	LIGHT DISTRIBUTION TYPE A OR B
A-LW	CONTROL PANEL A - LIGHTING CIRCUIT WEST
A-LE	CONTROL PANEL A - LIGHTING CIRCUIT EAST
B-LW	CONTROL PANEL B - LIGHTING CIRCUIT WEST
B-LE	CONTROL PANEL B - LIGHTING CIRCUIT EAST
C-LW	CONTROL PANEL C - LIGHTING CIRCUIT WEST
C-LE	CONTROL PANEL C - LIGHTING CIRCUIT EAST
SD-1	SPLICE DETAIL 1
SD-2	SPLICE DETAIL 2
SD-1	SPLICE DETAIL - SEE SPLICE DETAILS
CND	CONDUIT
PB ①	PULL BOX - TYPE 1
PB ②	PULL BOX - TYPE 2
3-10AWG	NUMBER OF WIRES - WIRE SIZE AMERICAN WIRE GAUGE
⊙	BOLLARDS



Signature *James Fowkes*
 Date 7/28/12
 Exp. Date 11-30-11

SHIVE-HATTERY
 Cedar Rapids, IA \ Iowa City, IA \ Des Moines, IA
 Moline, IL \ Bloomington, IL \ Chicago, IL
 SHIVE-HATTERY, INC. 1701 RIVER DRIVE, SUITE 200 MOLINE, IL 61265
 PHONE (309) 764-7650 FAX (309) 764-8616
 http://www.shive-hattery.com
 ILLINOIS FIRM NUMBER: 184-000214

FILE NAME =	USER NAME = \$USER\$	DESIGNED - JLP	REVISED -
\$FILE\$		DRAWN - DDL	REVISED -
	PLOT SCALE = \$SCALE\$	CHECKED - 07-06-10	REVISED -
	PLOT DATE = \$DATE\$	DATE - 07-06-10	REVISED -

STATE OF ILLINOIS
 DEPARTMENT OF TRANSPORTATION

RIVER DRIVE DECORATIVE LIGHTING PLAN
 SCALE: 1" = 20' SHEET NO. 18 OF 30 SHEETS STA. 10+75 TO STA. 16+00

F.A.U. RTE.	SECTION	COUNTY	TOTAL SHEETS	SHEET NO.
5756	06-00234-00-LS	ROCK ISLAND	30	18
CONTRACT NO. 85517				
FED. ROAD DIST. NO. 2 ILLINOIS FED. AID PROJECT				