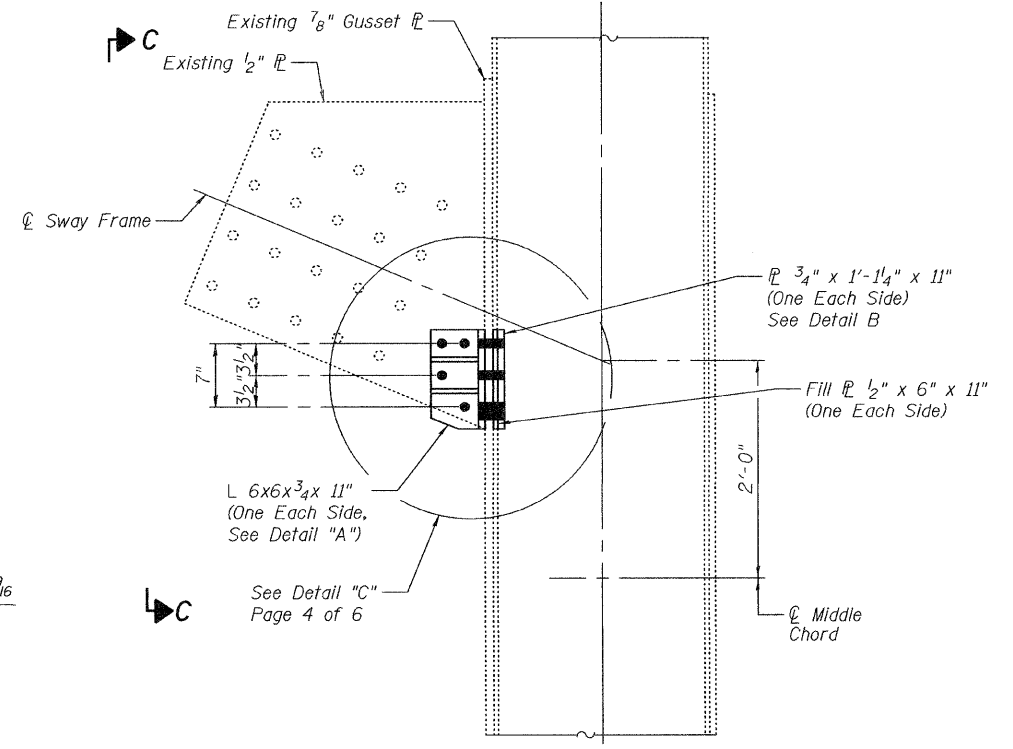
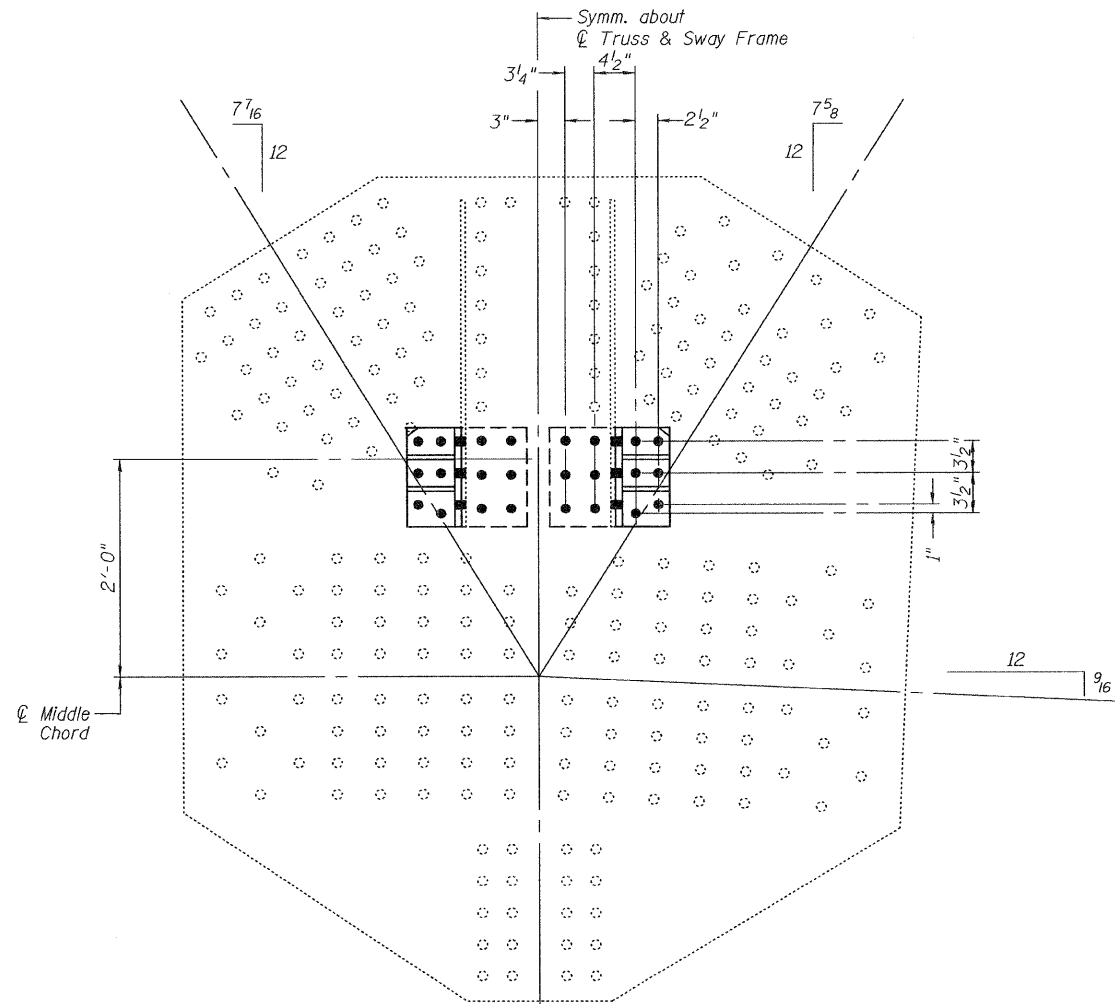


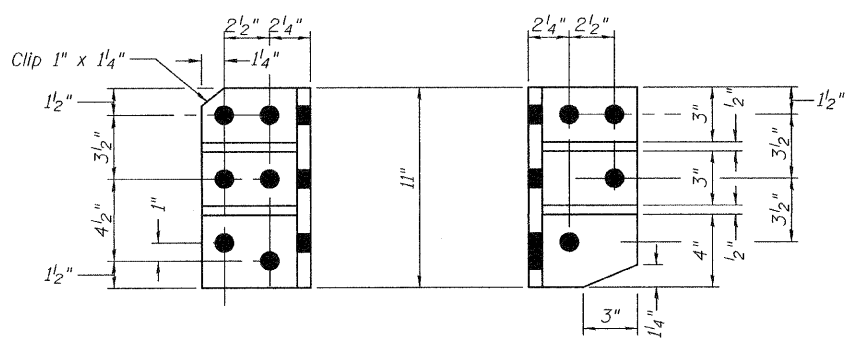
REPAIR LOCATION AT
PP24'
 (Looking North)
DIMENSION "A"
 PP24 = 28'-9"
ANGLE "a"
 PP24 = 22.874°



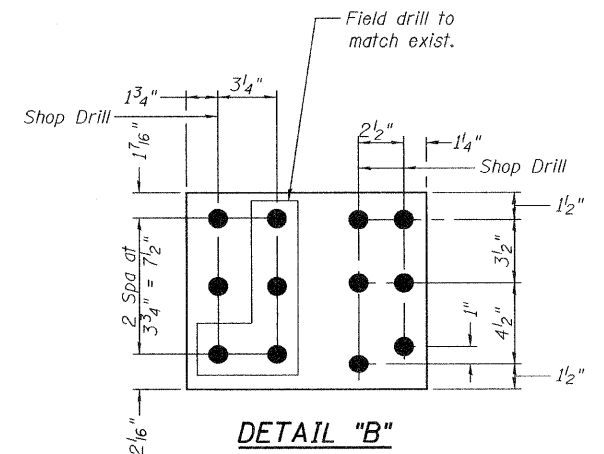
ELEVATION
 Looking North

SWAY BRACING RETROFIT AT LOCATION M24'
 (East Truss, 1 location)

VIEW C-C
 Looking East



DETAIL "A"



DETAIL "B"

Notes:
 The cost of plates, angles, bolts and all field drilling required for installation of the steel members is included with Structural Steel Repair.
 PP = Panel Point

BILL OF MATERIAL

Item	Unit	Quantity
Structural Steel Repair	Pound	200

DESIGNED - I.J.L.	EXAMINED - <i>Carl Paves</i>	DATE - August 11, 2010
CHECKED - G.G.E.	ENGINEER OF STRUCTURAL SERVICES	
DRAWN - Drew Christopher	PASSED - <i>Ralph E. Anderson</i>	
CHECKED - I.J.L. G.G.E.	ENGINEER OF BRIDGES AND STRUCTURES	

STATE OF ILLINOIS
DEPARTMENT OF TRANSPORTATION

SWAY FRAME DETAILS
SN 002-0022
 SHEET NO. 6 OF 6 SHEETS

F.A. RTE.	SECTION	COUNTY	TOTAL SHEETS	SHEET NO.
57	B9 BRIDGE REPAIR 200-1	Alexander	10	10
CONTRACT NO. 78220				
ILLINOIS FED. AID PROJECT				