

PROJECT ENGINEER - REBECCA MARRUFFO

PROJECT MANAGER - BRAD CUSHMAN (815)284-5996

F.A.P. RTE.	SECTION	COUNTY	TOTAL SHEETS	SHEET NO.
22	15T-1	WHITESIDE	17	1
		ILLINOIS	CONTRACT NO. 64F35	

STATE OF ILLINOIS
DEPARTMENT OF TRANSPORTATION
DIVISION OF HIGHWAYS
**PROPOSED
HIGHWAY PLANS**

FAP ROUTE 22 (IL 78)
SECTION 15T-1
PROJECT ACF-0022(077)

WHITESIDE COUNTY
C-92-094-10

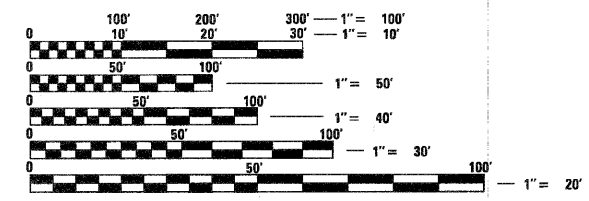


INDEX

- 1 COVER SHEET
- 2 SUMMARY OF QUANTITIES
- 3 GENERAL NOTES
- 4-5 TYPICAL SECTIONS
- 6 SCHEDULE OF QUANTITIES
- 7-8 HORIZONTAL & VERTICAL CONTROL
- 9 PLAN & PROFILE
- 10 BORING LOGS
- 11 DELINEATOR AND POST ORIENTATION (37.4)
- 12 WITNESS MARKER & PERMANENT SURVEY MARKERS, TYPE II (66.2)
- 13-15 TYPICAL PAVEMENT MARKINGS (41.1)
- 16-17 CROSS SECTIONS

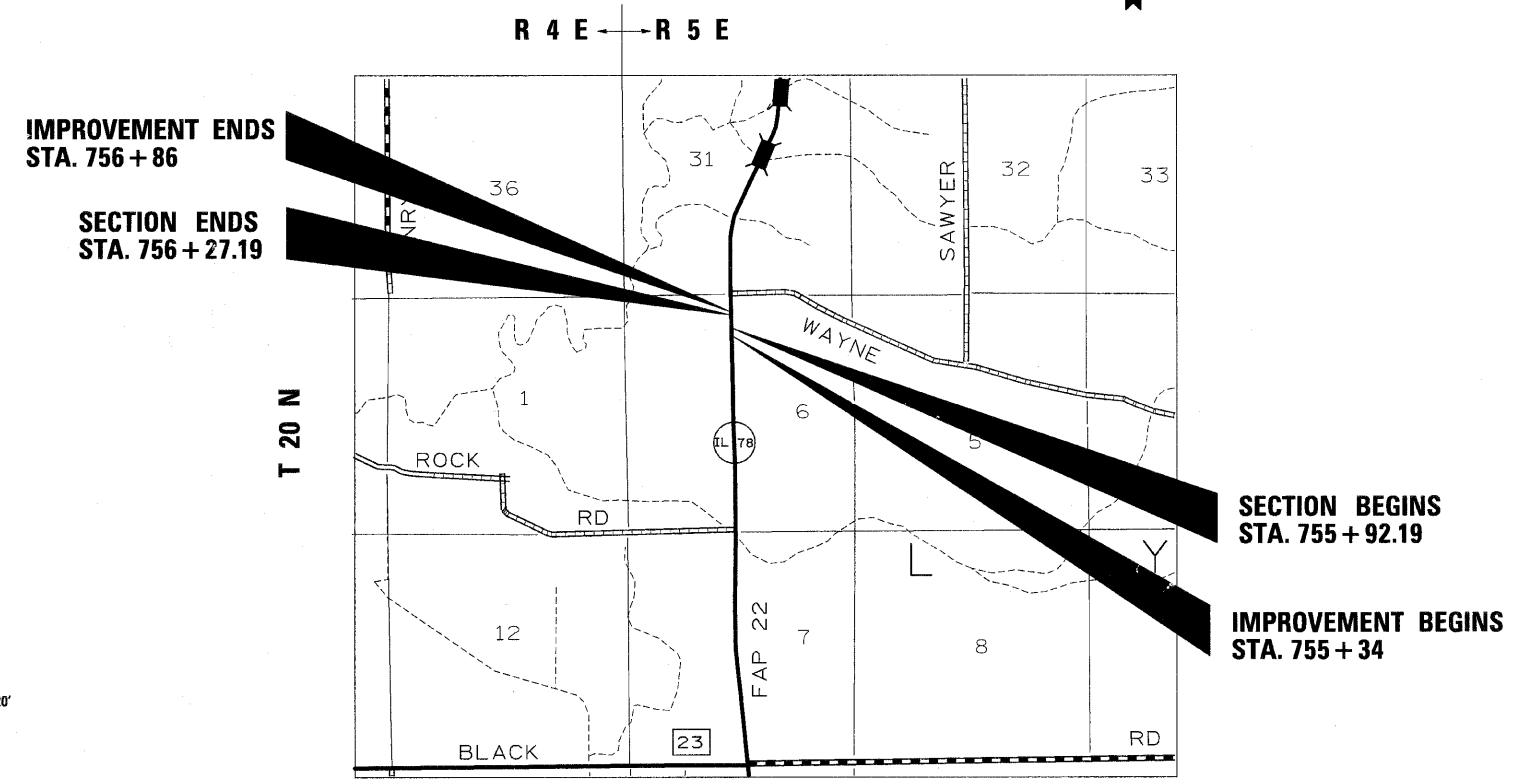
STATE STANDARDS

- 280001-05 TEMPORARY EROSION CONTROL SYSTEMS
- 442201-03 CLASS C AND D PATCHES
- 542301-02 PRECAST REINFORCED CONCRETE FLARED END SECTION
- 635001-01 DELINEATORS
- 666001-01 RIGHT-OF-WAY MARKERS
- 701001-02 TYPICAL APPLICATION OF TRAFFIC CONTROL STANDARD
- 701006-03 TYPICAL APPLICATION OF TRAFFIC CONTROL STANDARD
- 701201-03 TYPICAL APPLICATION OF TRAFFIC CONTROL STANDARD
- 701301-03 TYPICAL APPLICATION OF TRAFFIC CONTROL STANDARD
- 701901-01 TRAFFIC CONTROL DEVICES
- 720011-01 METAL POST FOR SIGNS, MARKERS AND DELINEATORS
- 728001-01 TELESCOPING STEEL SIGN SUPPORT
- 729001-01 APPLICATIONS OF TYPES A & B METAL POSTS (FOR SIGNS AND MARKERS)
- 780001-02 TYPICAL PAVEMENT MARKINGS



FULL SIZE PLANS HAVE BEEN PREPARED USING STANDARD ENGINEERING SCALES. REDUCED SIZED PLANS WILL NOT CONFORM TO STANDARD SCALES. IN MAKING MEASUREMENTS ON REDUCED PLANS, THE ABOVE SCALES MAY BE USED.

J.U.L.I.E.
JOINT UTILITY LOCATION INFORMATION FOR EXCAVATION
1-800-892-0123
OR 811



LYNDON TOWNSHIP, SECTION 6

GROSS LENGTH = 35 FT. = 0.01 MILE
NET LENGTH = 35 FT. = 0.01 MILE

STATE OF ILLINOIS
DEPARTMENT OF TRANSPORTATION
DIVISION OF HIGHWAYS

SUBMITTED June 24 2010
George F. Ryan
DEPUTY DIRECTOR OF HIGHWAYS, REGION ENGINEER

August 13 2010
Scott E. Still, P.E.
ENGINEER OF DESIGN AND ENVIRONMENT

August 13 2010
Christine M. Reed
DIRECTOR OF HIGHWAYS, CHIEF ENGINEER

**PRINTED BY THE AUTHORITY
OF THE STATE OF ILLINOIS**

CONTRACT NO. 64F35