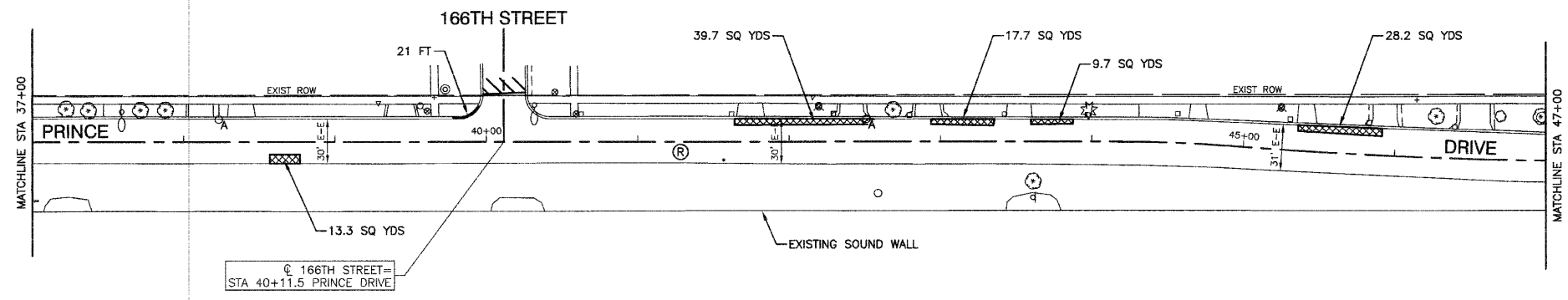


NOTES:

1. DETECTABLE WARNINGS ARE TO BE INSTALLED AT LOCATIONS OF SIDEWALK REMOVAL AND REPLACEMENT. CONTRACTOR TO POSITION AND PLACE DETECTABLE WARNINGS AT THE DIRECTION OF THE ENGINEER.
2. LIMIT OF CONSTRUCTION ON ALL SIDE STREETS IS THE RADIUS RETURN PLUS 10' BUTT JOINT OR ROW AS NOTED.
3. ACCESS TO ALL DRIVEWAYS SHALL BE MAINTAINED UPON COMPLETION OF EACH WORKDAY. RESIDENTS SHALL BE NOTIFIED 24 HOURS IN ADVANCE OF WHEN DRIVEWAY REPLACEMENT WILL TAKE PLACE.



LEGEND

- HOT-MIX ASPHALT PAVEMENT REPAIR
- HOT-MIX ASPHALT SURFACE REMOVAL - BUTT JOINT (10' UNLESS OTHERWISE INDICATED)
- CONCRETE SIDEWALK REMOVAL AND REPLACEMENT (PAID FOR AS PORTLAND CEMENT CONCRETE SIDEWALK, 5" SIDEWALK REMOVAL)
- COMBINATION CONCRETE CURB AND GUTTER REMOVAL AND REPLACEMENT
- HOT-MIX ASPHALT DRIVEWAY REMOVAL AND REPLACEMENT (PAID FOR AS HOT-MIX ASPHALT DRIVEWAY PAVEMENT, 5" HOT-MIX ASPHALT DRIVEWAY PAVEMENT REMOVAL)
- "A" FRAMES AND LIDS TO BE ADJUSTED, SPECIAL
- EXISTING MANHOLE
- EXISTING CATCH BASIN
- HOT-MIX ASPHALT SURFACE REMOVAL, 2 1/4" POLYMERIZED LEVELING BINDER (MACHINE METHOD), N50, 1" HOT-MIX ASPHALT SURFACE COURSE, MIX "D", N50, 1 1/2"

BENCH MARK:

"X" CUT ON NEX CONC BASE OF ALUM LT POLE ON NWX 167TH PL AND PRINCE DRIVE ELEVATION = 600.275

FILE NAME = 08185_01-PLAN-01 - IDOT P02	USER NAME =	DESIGNED -- JPH	REVISED --	STATE OF ILLINOIS DEPARTMENT OF TRANSPORTATION	PRINCE DRIVE RESURFACING 170TH STREET TO WOODLAWN EAST AVENUE PAVEMENT PLAN		F.A.I. RTE.	SECTION	COUNTY	TOTAL SHEETS	SHEET NO.
		CHECKED -- PKB	REVISED --		94	10-00088-00-RS	COOK	18	5		
	PLOT SCALE =	DRAWN -- RG	REVISED --		SCALE: 1"=50'		SHEET NO. 5 OF 18 SHEETS		CONTRACT NO. 63495		
	PLOT DATE = 08-22-10	CHECKED -- AG	REVISED --		STA. TO STA.		FED. ROAD DIST. NO. 1 ILLINOIS		FED. AID PROJECT ARA-9003(668)		