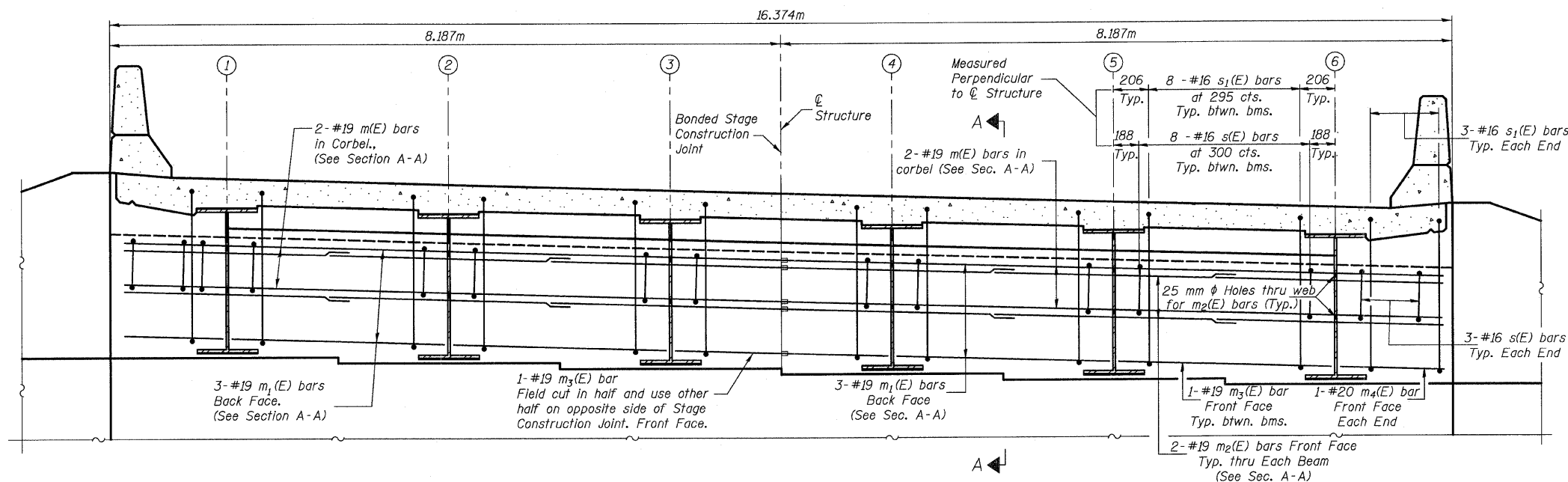


STATE OF ILLINOIS
DEPARTMENT OF TRANSPORTATION

ROUTE NO.	SECTION	COUNTY	TOTAL SHEETS	SHEET NO.	SHEET NO. 9 23 SHEETS
FAP 303 IL 173	2010-086-F	LAKE	29	20	
FED. ROAD DIST. NO. 7	ILLINOIS	FED. AID PROJECT-			



END DIAPHRAGM AT ABUTMENT

NOTES

Reinforcement bars in diaphragm are billed with superstructure on Sheet #8.

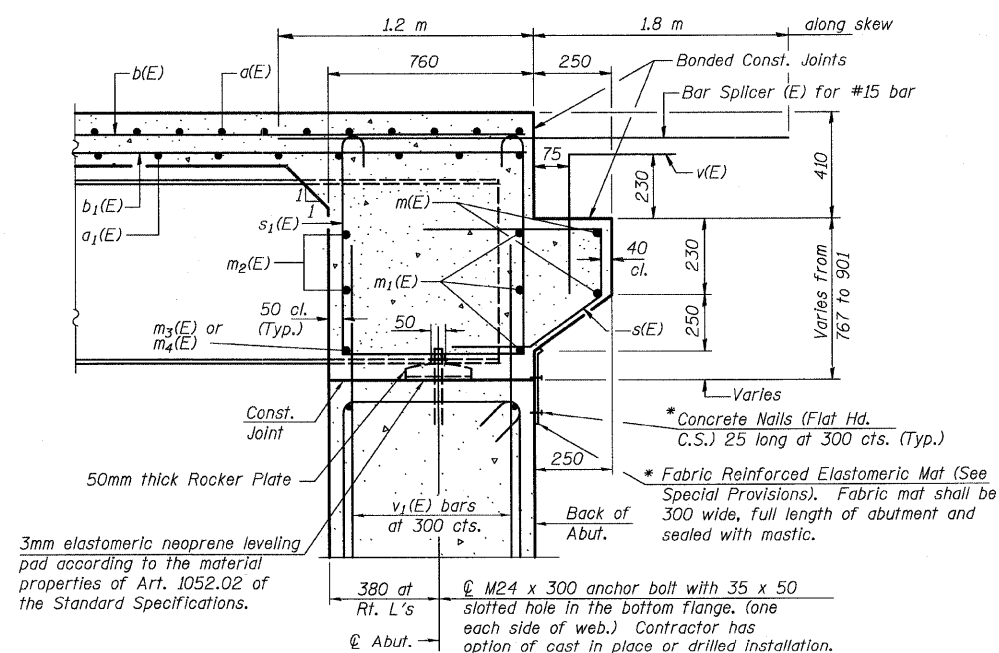
Concrete in diaphragm is included with Concrete Superstructure on Sheet #8.

For details of bars s(E) and s₁(E) see Sheet #8.

The s(E) and s₁(E) bars shall be placed parallel to the beams. Spacing for these bars shall be at right angles to the beams.

Reinforcement Bars designated (E) shall be Epoxy Coated.

All dimensions are in millimeters (mm) except as noted.



SECTION A-A

Dimensions in Section A-A at right angles to abutment.
* Cost Included with Concrete Structures.

MINIMUM BAR LAP

#19 bar = 850

SUPERSTRUCTURE DETAILS-1
FAP 303 IL. ROUTE 173
OVER EAST BOAT CHANNEL
SECTION 2010-086-F
LAKE COUNTY
STATION 26+271.906
STRUCTURE NO. 049-0198

DESIGNED	JRF
CHECKED	RCJ
DRAWN	RDS
CHECKED	JRF

SI-DS1 (M) 4-30-99

