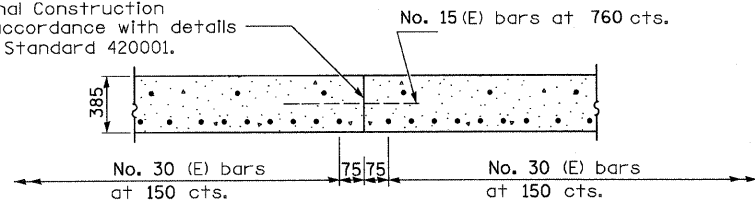


STATE OF ILLINOIS
DEPARTMENT OF TRANSPORTATION

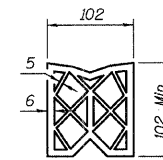
ROUTE NO.	SECTION	COUNTY	TOTAL SHEETS	SHEET NO.	SHEET NO. 10
FAP 303 IL 173	2010-086-F	LAKE	29	10	17 SHEETS
FED. ROAD DIST. NO. 7	ILLINOIS	FED. AID PROJECT-			

Longitudinal Construction Joint in accordance with details shown on Standard 420001.

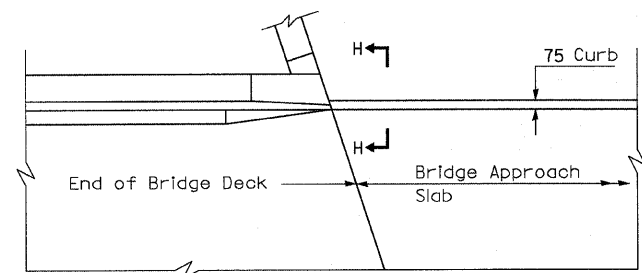


LONGITUDINAL CONSTRUCTION JOINT

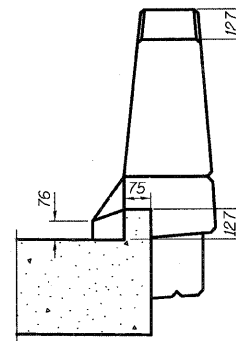
As approved by the Engineer, the Contractor may elect to reduce the widths of pour by use of the Optional Longitudinal Construction Joint shown. Joints shall be located at the edge of a traffic lane.



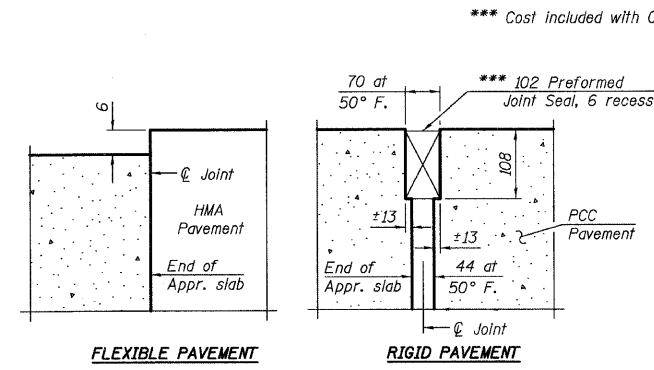
PREFORMED JOINT SEAL



PARAPET TO CURB TRANSITION

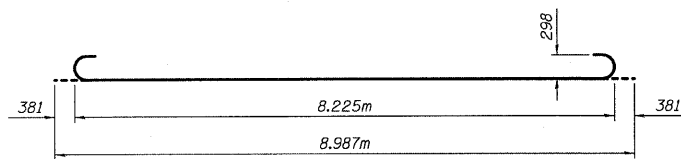


VIEW H-H

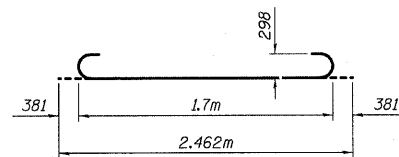


DETAIL A

*** Cost included with Concrete Superstructure.



BAR a(E)



BAR a2(E)

NOTES:

All dimensions are in millimeters unless otherwise shown.

BRIDGE APPROACH SLAB - 2
FAP 303 IL. ROUTE 173
OVER WEST BOAT CHANNEL
SECTION 2010-086-F
LAKE COUNTY
STATION 25+098.390
STRUCTURE NO. 049-0055

DESIGNED	RGT
CHECKED	RJC/JRF
DRAWN	RDS
CHECKED	PAT2



3117APPROACHPVT.DGN