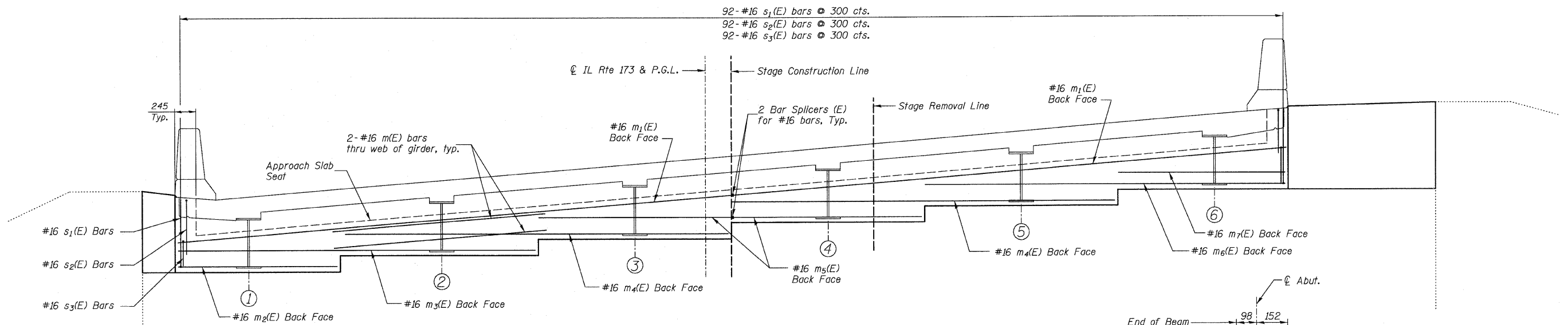


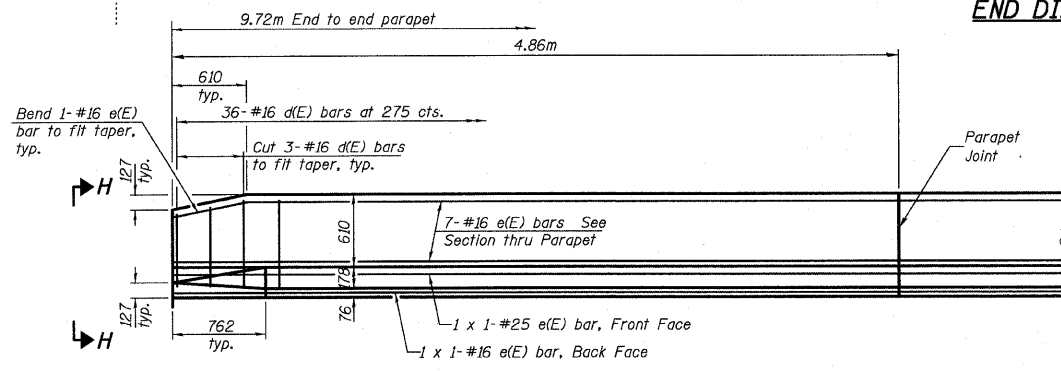
STATE OF ILLINOIS
DEPARTMENT OF TRANSPORTATION

ROUTE NO.	SECTION	COUNTY	TOTAL SHEETS	SHEET NO.	SHEET NO.
FAP 303 IL 173	2010-086-F	LAKE	29	8	17 SHEETS
FED. ROAD DIST. NO. 7	ILLINOIS	FED. AID PROJECT-			

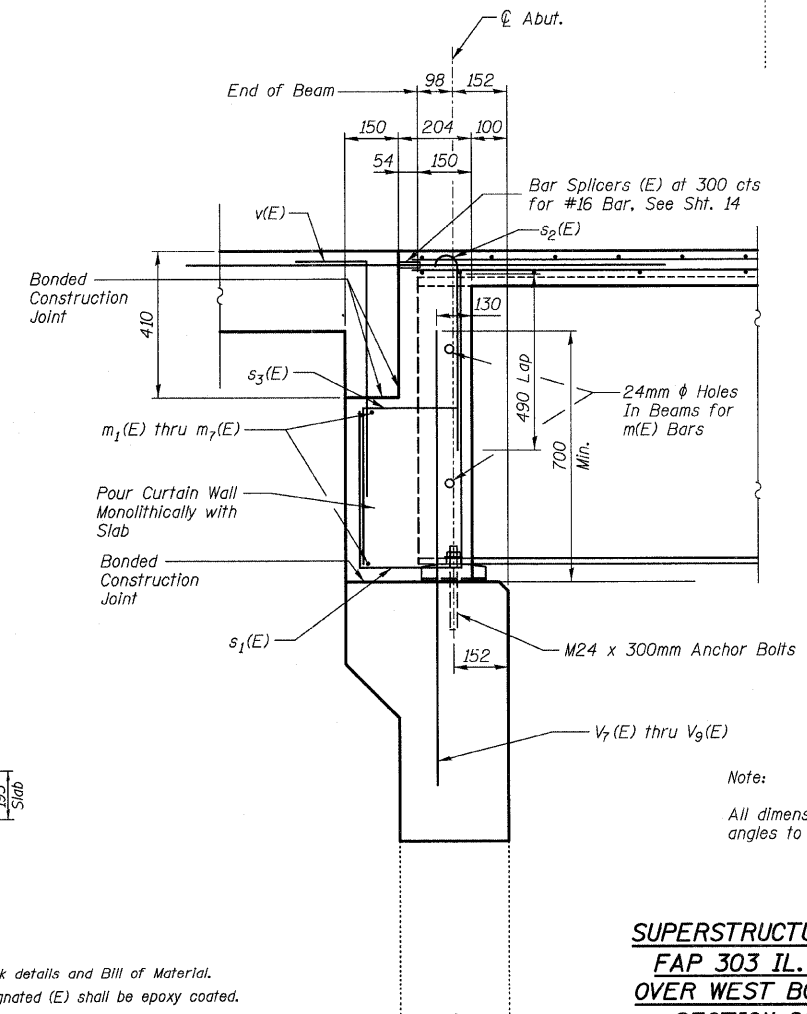


END DIAPHRAGM AT ABUTMENT

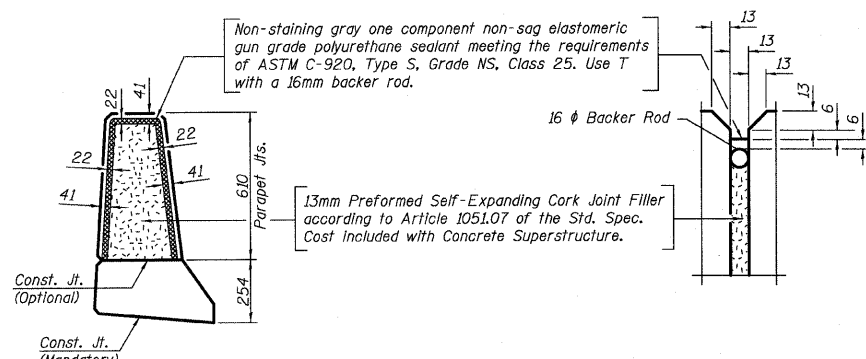
Looking East
East Abutment Shown
West Abutment Similar



INSIDE ELEVATION OF PARAPET

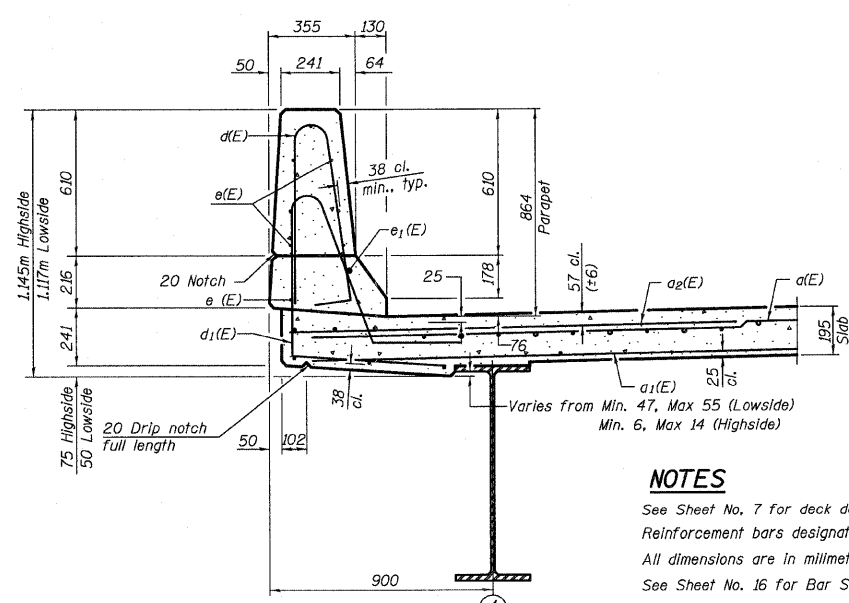


SECTION A-A



PARAPET JOINT DETAILS

DESIGNED	PAT2
CHECKED	RCJ/JRF
DRAWN	RDS
CHECKED	PAT2



SECTION THRU PARAPET

Lowside Shown
Highside Similar

NOTES

See Sheet No. 7 for deck details and Bill of Material.
Reinforcement bars designated (E) shall be epoxy coated.
All dimensions are in millimeters (mm) except as noted.
See Sheet No. 16 for Bar Splicer Details.
See Sheet No. 10 for View H-H

Note:
All dimensions at right angles to abutment.

SUPERSTRUCTURE DETAILS
FAP 303 IL. ROUTE 173
OVER WEST BOAT CHANNEL
SECTION 2010-086-F
LAKE COUNTY
STATION 25+098.390
STRUCTURE NO. 049-0055

3117-049-0055.DGN