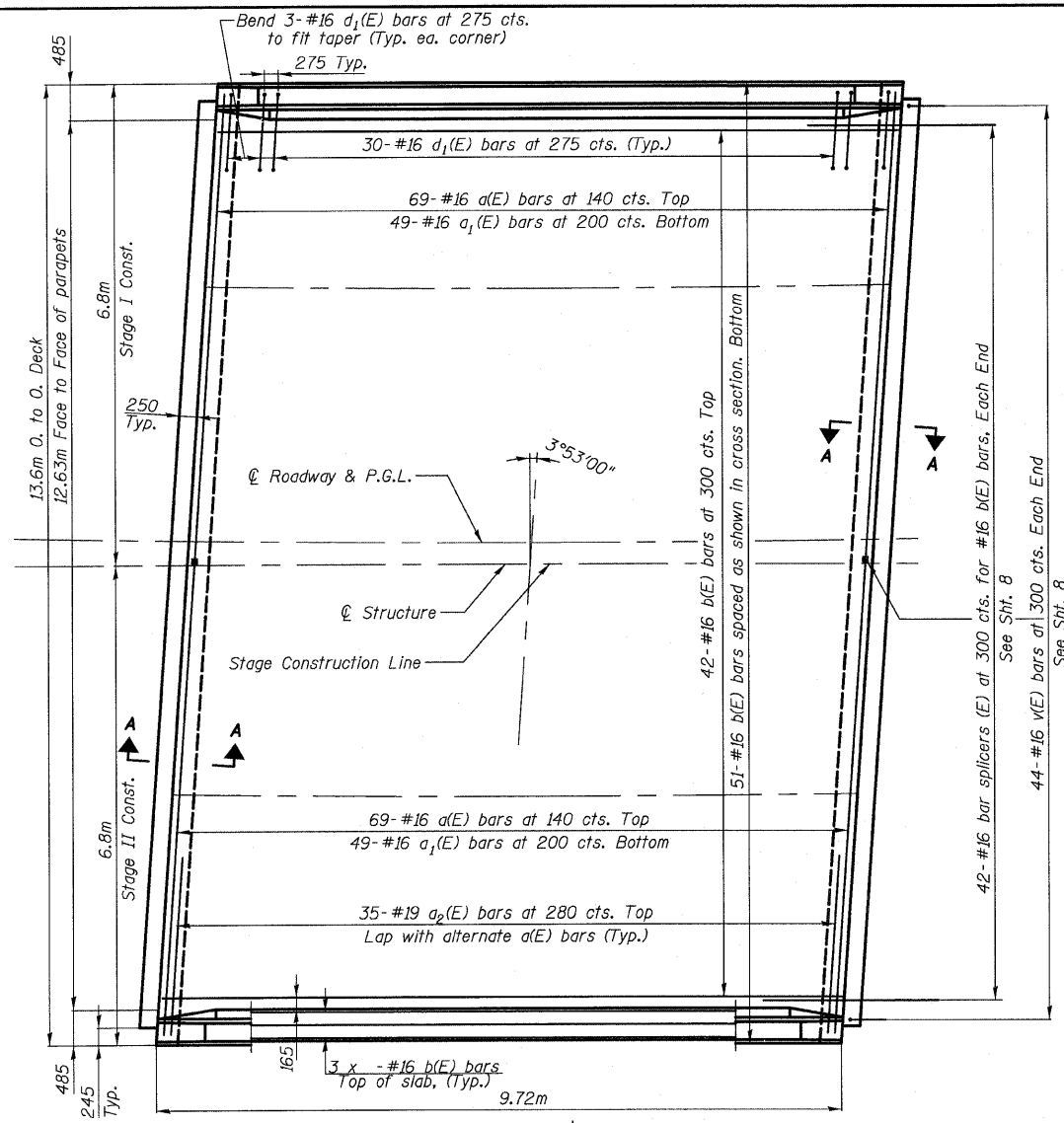
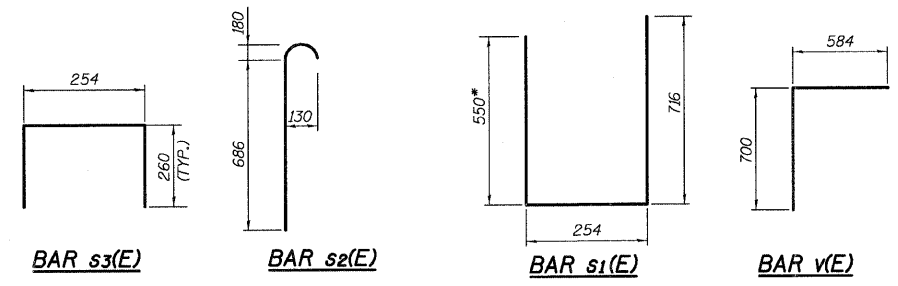
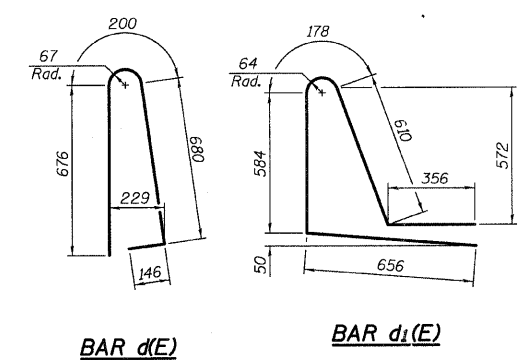


STATE OF ILLINOIS  
DEPARTMENT OF TRANSPORTATION

ROUTE NO.	SECTION	COUNTY	TOTAL SHEETS	SHEET NO.	SHEET NO. 7
FAP 303 IL 173	2210-086-F	LAKE	29	7	17 SHEETS
FED. ROAD DIST. NO. 7	ILLINOIS	FED. AID PROJECT-			



69 Bar Splicers (E) at 140 cts. for #16 a(E) bars, Top.  
49 Bar Splicers (E) at 200 cts. for #16 a1(E) bars, Bottom.



\*field trim bar to maintain  
clr at approach seat

**SUPERSTRUCTURE  
BILL OF MATERIAL**

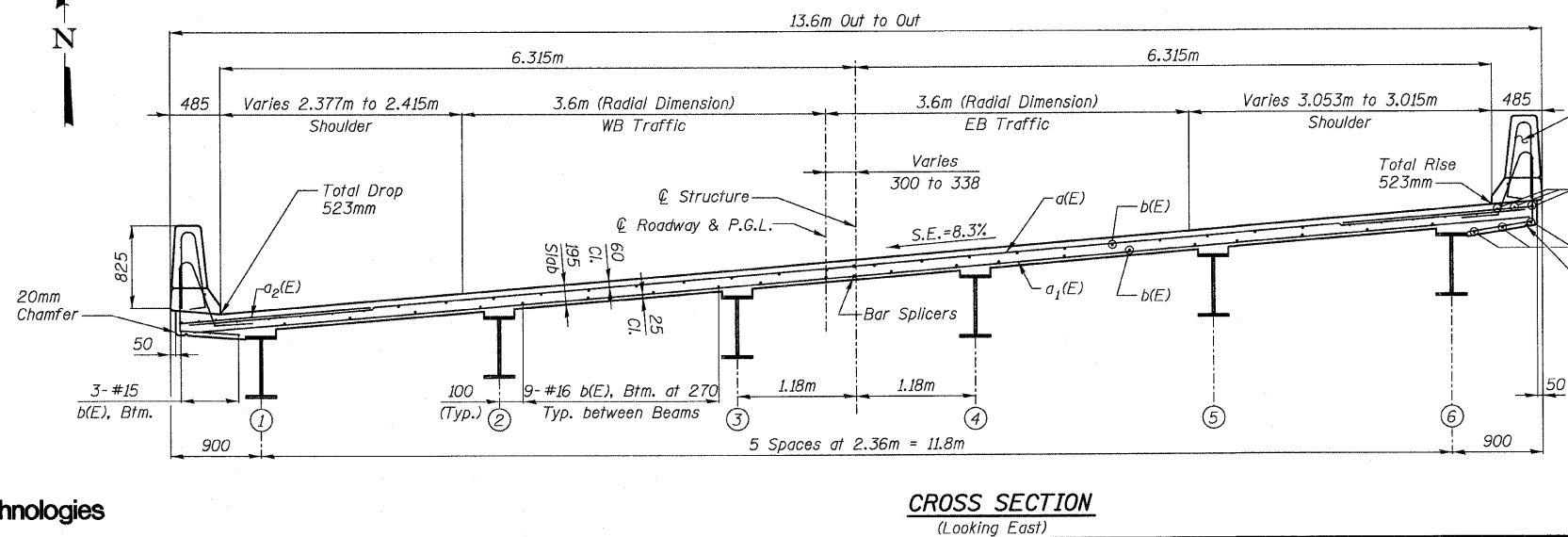
Bar	No.	Size	Length(m)	Shape
a(E)	138	#16	6.685	—
a1(E)	98	#16	6.421	—
a2(E)	70	#19	2.000	—
b(E)	99	#16	9.640	—
d(E)	72	#16	1.702	⌒
d1(E)	72	#16	2.384	⌒
e(E)	32	#16	4.770	—
e1(E)	2	#25	9.640	—
m(E)	24	#16	3.270	—
m1(E)	4	#16	6.732	—
m2(E)	2	#16	1.970	—
m3(E)	2	#16	4.330	—
m4(E)	4	#16	4.670	—
m5(E)	4	#16	2.260	—
m6(E)	2	#16	4.390	—
m7(E)	2	#16	2.030	—
s1(E)	92	#16	1.520	⌒
s2(E)	92	#16	0.866	⌒
s3(E)	92	#16	0.774	⌒
v(E)	88	#16	1.284	⌒
Reinforcement Bars Epoxy Coated		kg	5850	
Concrete Superstructure		m <sup>3</sup>	39	

**NOTES**

- Bars designated (E) shall be epoxy coated.
- See Sheet No. 8 for Superstructure Details.
- See Sheet No. 8 for parapet reinforcement.
- For Section A-A, See Sheet No. 8.
- Indicates Girder Number.
- All dimensions are in millimeters (mm) except as noted.
- See Sheet No. 16 for Bar Splicer Details.

**NOTES**  
See Sheet No. 16 for Bar Splicer Details.  
Place Transverse Bars Parallel to Skew.

DESIGNED	PAT2
CHECKED	RCJ/JRF
DRAWN	RDS
CHECKED	PAT2



**MINIMUM BAR LAP**

- #16 bar = 470
- #19 bar = 610
- #25 bar = 1.010m

**DECK PLAN AND CROSS SECTION**  
FAP 303 IL. ROUTE 173  
OVER WEST BOAT CHANNEL  
SECTION 2010-086-F  
LAKE COUNTY  
STATION 25+098.390  
STRUCTURE NO. 049-0055

**FOR INFORMATION ONLY**

3117-049-0055.DGN