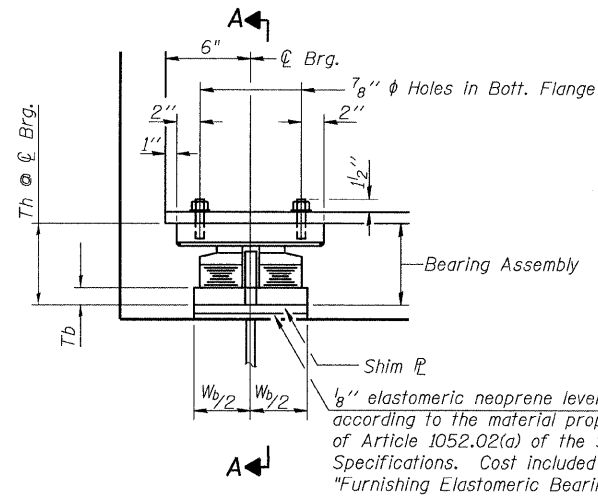
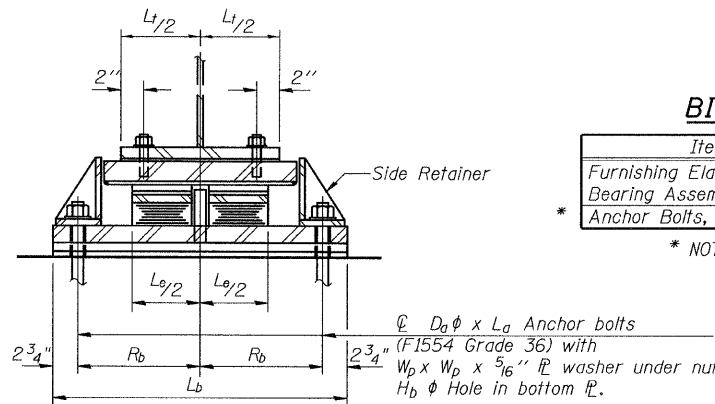


STATE OF ILLINOIS  
DEPARTMENT OF TRANSPORTATION



**ELEVATION AT ABUT.**

**TYPE III ELASTOMERIC EXP. BRG.**

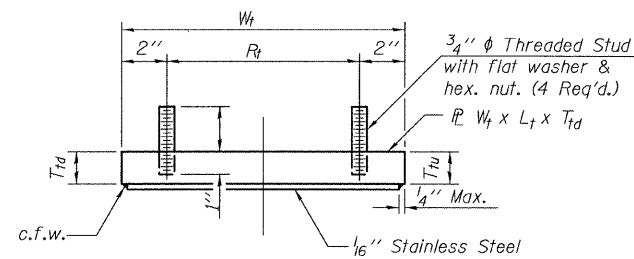


**SECTION A-A**

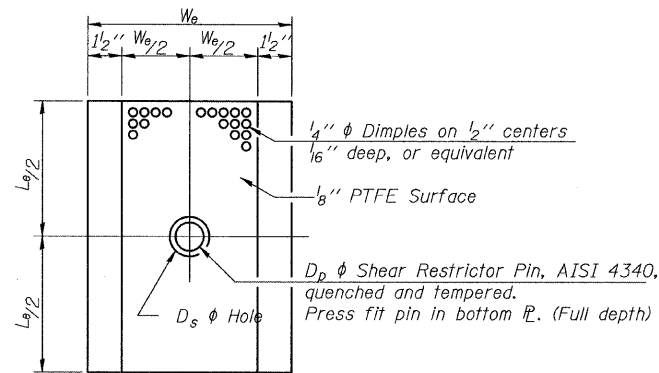
**BILL OF MATERIAL**

Item	Unit	Total
Furnishing Elastomeric Bearing Assembly Type III	Each	17
* Anchor Bolts, 1 1/2"	Each	34

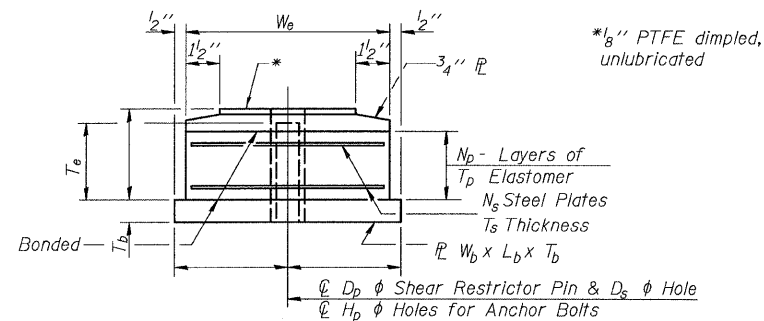
\* NOT IN CONTRACT



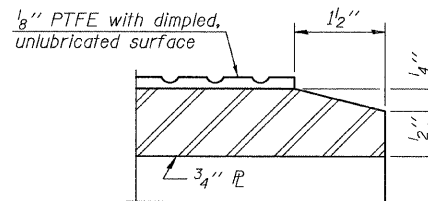
**TOP BEARING ASSEMBLY**



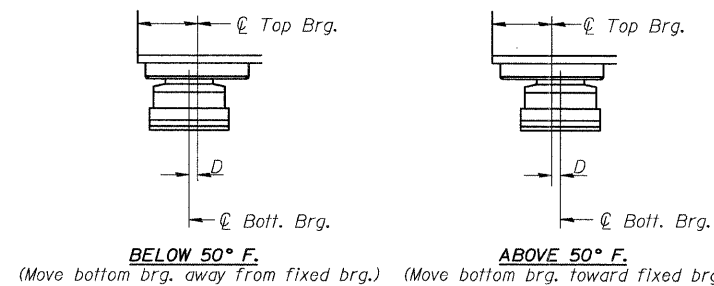
**PLAN-PTFE ELASTOMERIC BRG.**



**BOTTOM BEARING ASSEMBLY**



**SECTION THRU PTFE**



**SETTING ANCHOR BOLTS AT EXP. BRG.**  
D = 1/8" per each 100' of expansion for every 15° temp. change from the normal temp. of 50° F.

**ELASTOMERIC BEARING TYPE III  
STRUCTURE NO. 016-3240**

I-2E-3

11-1-09

**TYLIN INTERNATIONAL**

DESIGNED	DY, LS	REVISIONS	
CHECKED	AMD, LS	NAME	DATE
DRAWN	DY, LS		
CHECKED	AMD, LS		
DATE	08/02/10		

SHEET NO. 32	F.A.I RTE.	SECTION	COUNTY	TOTAL SHEETS	SHEET NO.
33 SHEETS	55	0711.2R & 1011.1BR	COOK	200	199
			CONTRACT NO. 60L39		
			FED. ROAD DIST. NO. 1 ILLINOIS FED. AID PROJECT		

pi\01345\beam\_and\_bearing\_fabrication\155c3\type3.dgn 8/2/2010 1:59:34 PM