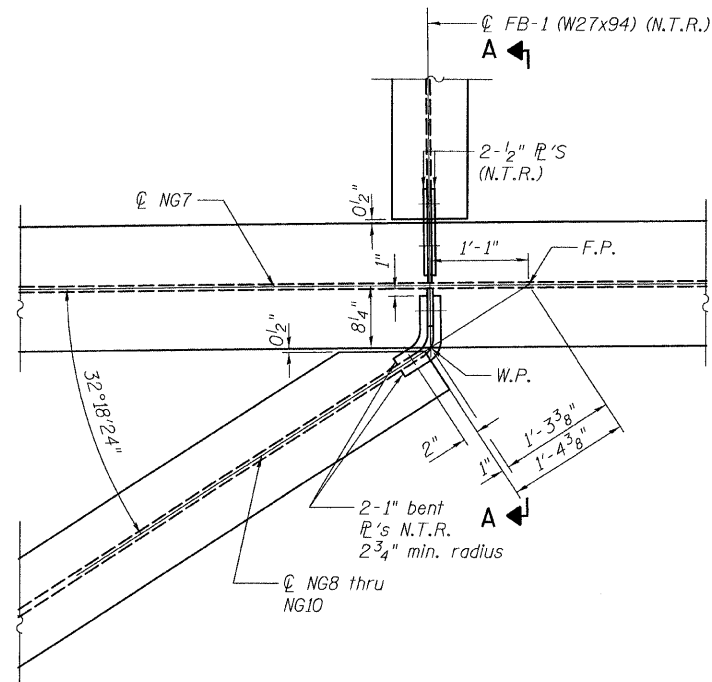
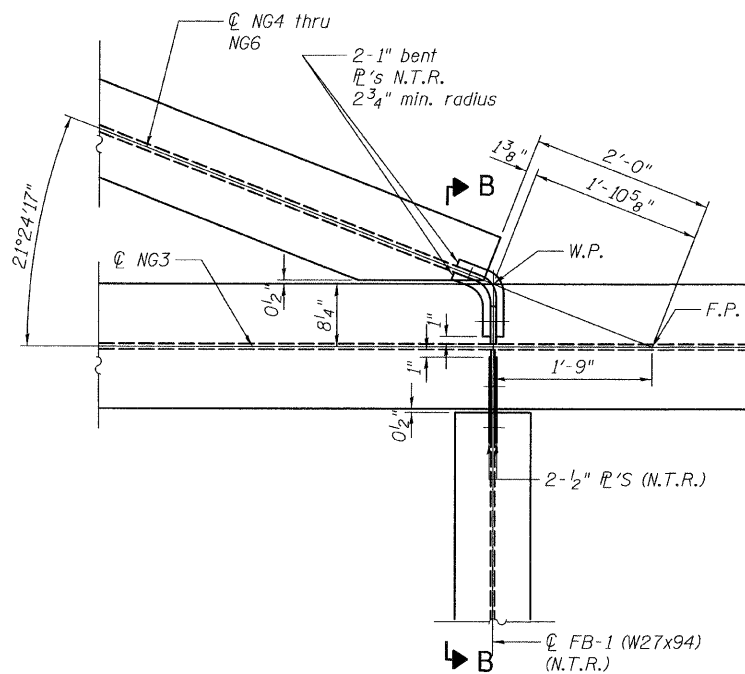
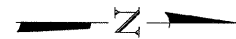


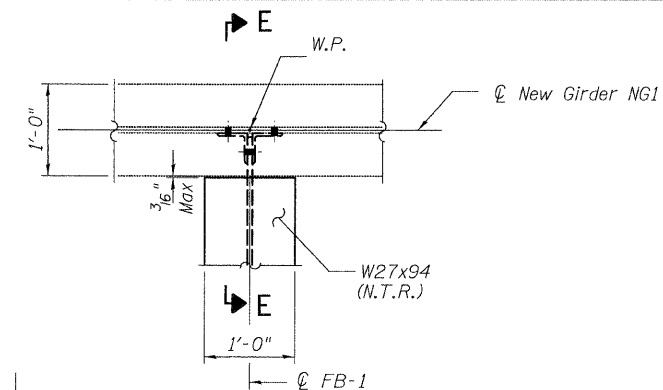
STATE OF ILLINOIS  
DEPARTMENT OF TRANSPORTATION



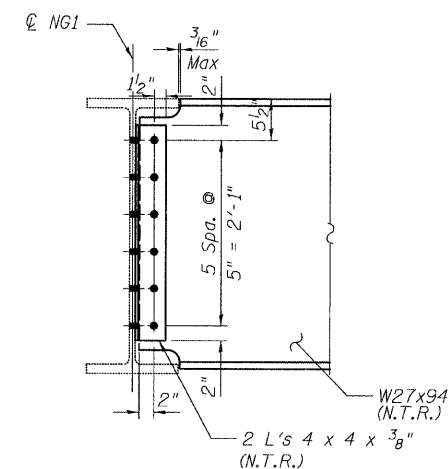
DETAIL 1



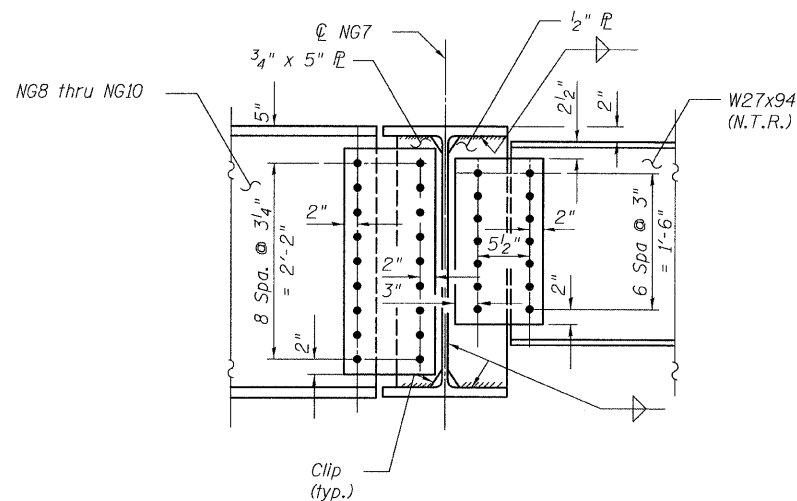
DETAIL 2



DETAIL 3  
(Top Flange Shown)  
(Bottom Flange Similar)



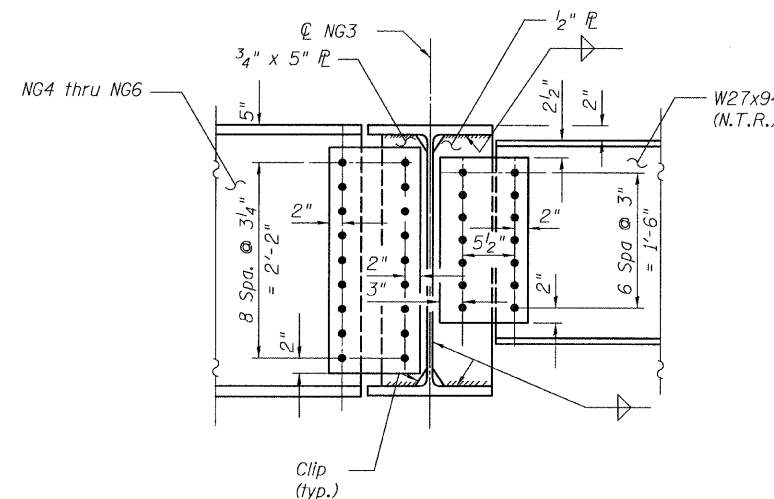
SECTION E-E



SECTION A-A

All bolts shall be 7/8"  $\phi$ . Holes shall be 15/16"  $\phi$  in framing of NG7 with NG10. Holes shall be 1/16"  $\phi$  in framing of NG7 with FB-1.

Two hardened washers required for each set of oversized holes.



SECTION B-B

All bolts shall be 7/8"  $\phi$ . Holes shall be 15/16"  $\phi$  in framing of NG3 with NG4. Holes shall be 1/16"  $\phi$  in framing of NG3 with FB-1.

Two hardened washers required for each set of oversized holes.

NOTES:

1. Steel shall be AASHTO M 270 Grade 50.
2. For stud location see girder elevations.
3. Load carrying components designated "N.T.R." shall conform to the Supplemental Requirements for Notch Toughness, Zone 2.
4. CJP Weld - denotes Complete Joint Penetration Weld.
5. N.F. - denotes near face.
6. F.F. - denotes far face.
7. Work this sheet with sheets 17 & 21.
8. F.P. - denotes framing point.

FRAMING DETAILS  
CONNECTIONS  
STRUCTURE NO. 016-3240

TYLIN INTERNATIONAL

DESIGNED - DY, LS	REVISIONS	
	NAME	DATE
CHECKED - AMD, LS		
DRAWN - DY, LS		
CHECKED - AMD, LS		
DATE - 08/02/10		

SHEET NO. 26	F.A.I. RTE.	SECTION	COUNTY	TOTAL SHEETS	SHEET NO.
CONTRACT NO. 60L39					
FED. ROAD DIST. NO. 1 ILLINOIS FED. AID PROJECT					