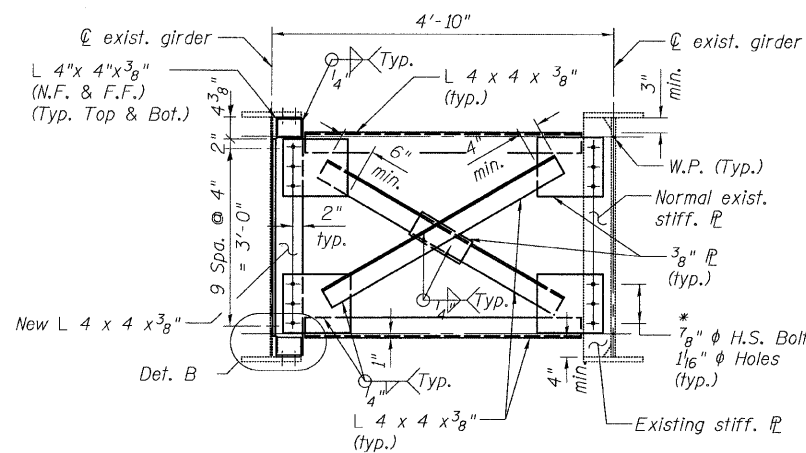


STATE OF ILLINOIS
DEPARTMENT OF TRANSPORTATION
Length (See Table)

* Cost of Timber Block Posts is included with "Erecting Structural Steel."

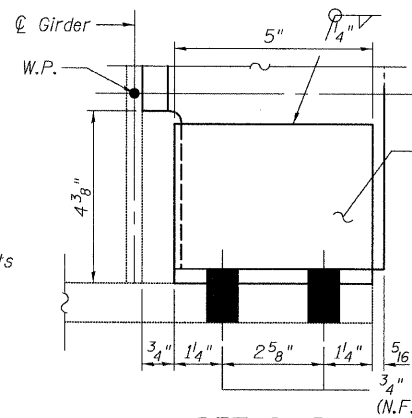


CROSS FRAMES CF3
(10 Required)

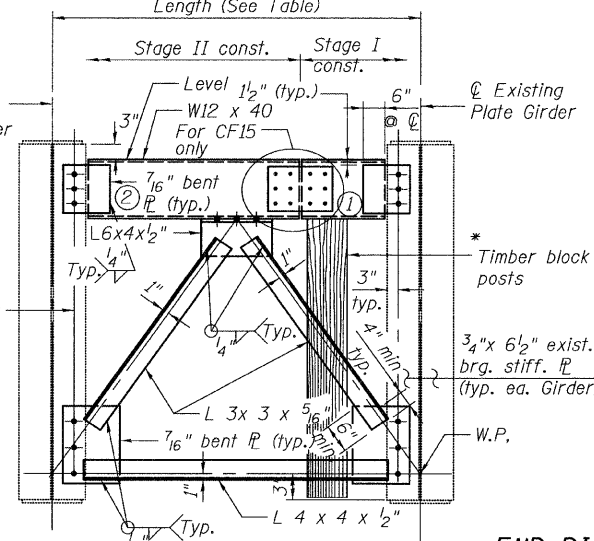
NOTE:

Provide Crossframes CF3 at the location of the existing stiffeners normal to girders. (Field verify the existing stiffener locations)

Provide 1 1/16" φ holes in the existing connection plate for Girder J and in the 3/8" cross frame plates. Provide 2" long slotted vertical x 1 1/16" wide holes in the new angle attached to Girder H. The slotted holes shall have 5/16" structural plate washers placed over them.



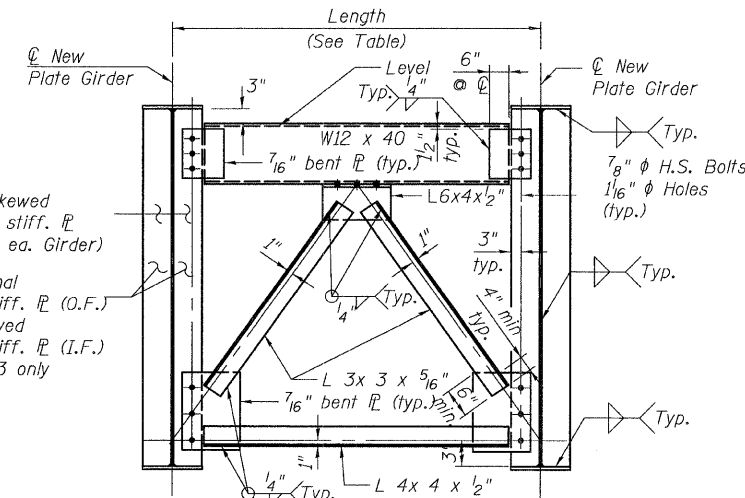
DETAIL B



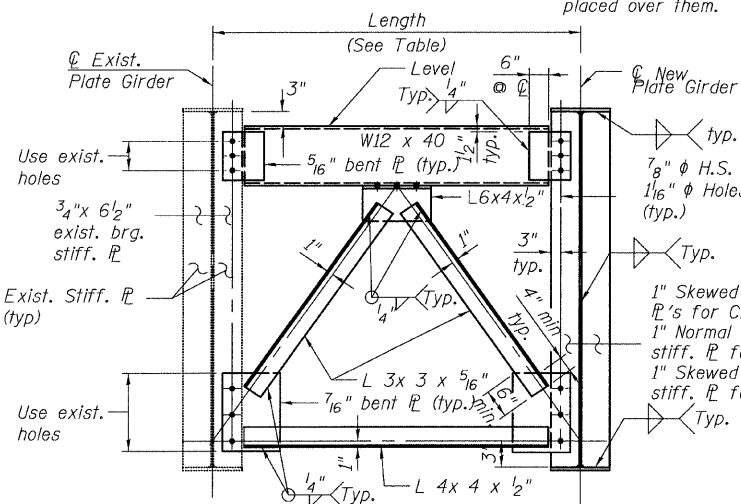
CROSS FRAMES CF15 & CF16
(At Pier 9) (15 Required)

END DIAPHRAGM STAGE CONSTRUCTION SEQUENCE

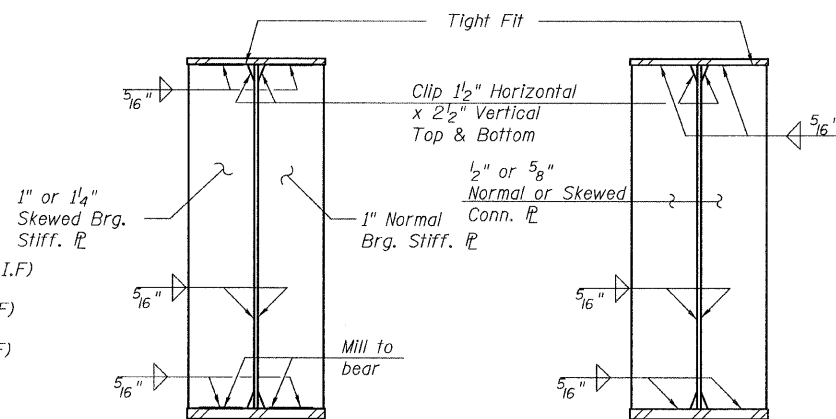
- 1.) Order diaphragm in two sections.
- 2.) Attach section ① of diaphragm to girder.
- 3.) Place timber block posts between section ① of diaphragm and pier bearing seat.
- 4.) Attach section ② of diaphragm to both girder and section ① of diaphragm during stage II construction with splice plates. Remove timber block posts.



CROSS FRAMES CF18
(At Pier 9)
(2 Required)



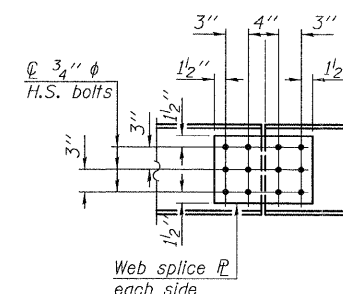
CROSS FRAMES CF14 & CF17
(At Pier 9) (2 Required)



****BEARING STIFFENER**

****INTERMEDIATE STIFFENER OR INTERIOR CONNECTION PLATE**

**For size, location and skew see Girder Elevation Details.



SPLICE PLATE DETAIL

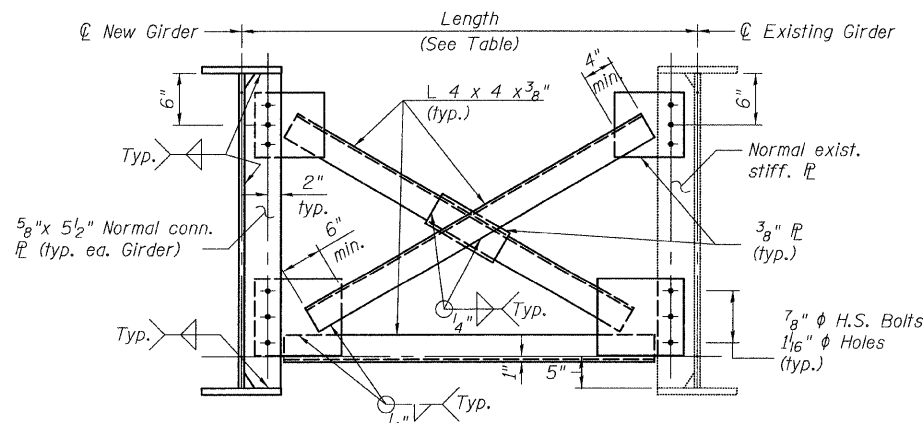
TABLE OF CROSS FRAMES DIMENSIONS
See Detail A

Cross Frame	Length (m)	No. Req'd.	Angle "A"	Angle "B"
CF1	5'-2 1/8"	20	90°0'0"	90°0'0"
CF2	*5'-2 1/8"	10	90°0'0"	90°0'0"
CF3	*4'-10"	10	90°0'0"	90°0'0"
CF4	*5'-1 1/8"	1	90°41'27"	90°0'0"
CF5	*4'-10 5/8"	1	90°41'27"	90°0'0"
CF6	*4'-8 1/8"	1	90°41'27"	90°0'0"
CF7	*4'-5"	1	90°41'27"	90°0'0"
CF8	*4'-2"	1	90°41'27"	90°0'0"
CF9	*3'-11"	1	90°41'27"	90°0'0"
CF10	*3'-8 3/8"	1	90°41'27"	90°0'0"
CF11	*3'-5 5/8"	1	90°41'27"	90°0'0"
CF12	*3'-2 3/4"	1	90°41'27"	90°0'0"
CF13	*3'-0"	1	90°41'27"	90°0'0"
CF14	*2'-11 3/4"	1	-	-
CF15	5'-2 3/8"	1	-	-
CF16	6'-2 1/4"	14	-	-
CF17	*5'-6 3/8"	1	-	-
CF18	5'-6 1/8"	2	-	-

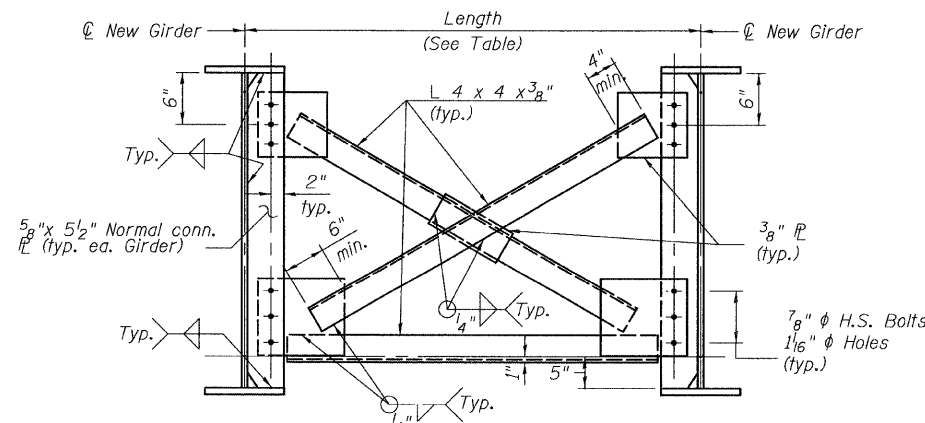
* Field verify lengths and locations prior to steel fabrication.

NOTES:

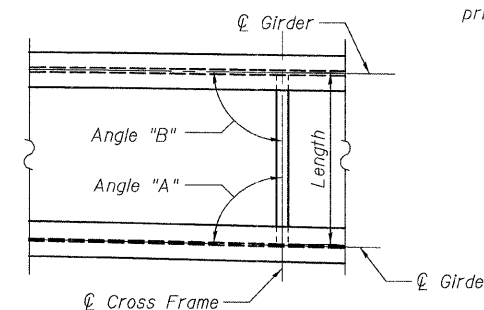
1. Two hardened washers required for each set of oversized holes.
2. O.F. denotes outside face.
3. I.F. denotes inside face.
4. N.F. denotes near face.
5. F.F. denotes far face.



CROSS FRAMES CF2 & CF4 THRU CF13
(20 Required)



CROSS FRAMES CF1
(20 Required)



DETAIL A

**CROSS FRAMES SPANS 11, 12 & 13
STRUCTURE NO. 016-3240**

TYLIN INTERNATIONAL

DESIGNED	BY	LS	REVISIONS	
CHECKED	BY	LS	NAME	DATE
DRAWN	DY	LS		
CHECKED	AMD	LS		
DATE	08/02/10			

SHEET NO.	F.A.I. RTE.	SECTION	COUNTY	TOTAL SHEETS	SHEET NO.
24	55	0711.2R & 1011.1BR	COOK	200	191
33 SHEETS			CONTRACT NO. 60L39		
FED. ROAD DIST. NO. 1 ILLINOIS FED. AID PROJECT					