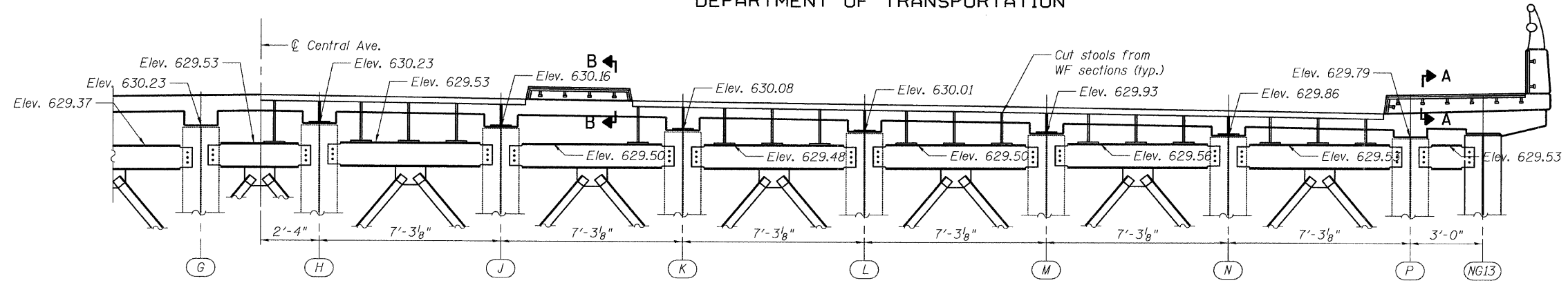
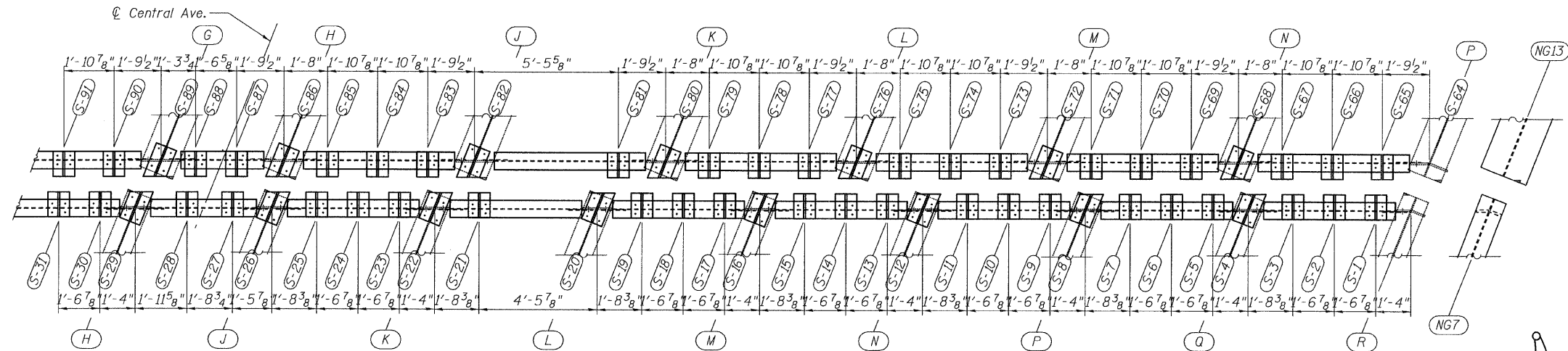


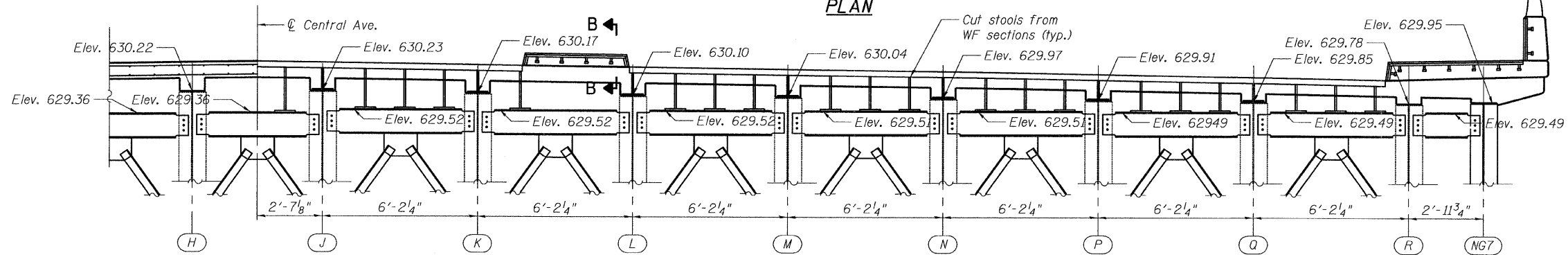
STATE OF ILLINOIS
DEPARTMENT OF TRANSPORTATION



CROSS FRAME DIAPHRAGMS AT PIER 9
(Span 14, Looking North)



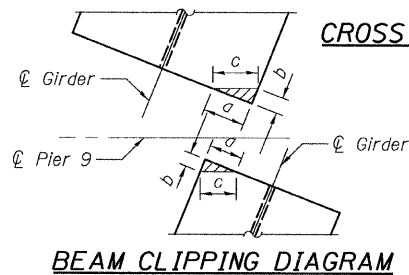
PLAN



CROSS FRAME DIAPHRAGMS AT PIER 9
(Span 13, Looking North)

BEAM CLIPPING DIMENSIONS

| Girder | Span | a | b | c |
|---------------|------------|--------|--------|--------|
| NG7 | 11 thru 13 | 1 1/4" | 1/2" | 1 3/8" |
| A thru R | 11 thru 13 | 2 3/4" | 1 1/8" | 3" |
| NG1, NG2, NG3 | 11 thru 13 | 1 3/8" | 1/2" | 1 3/8" |
| A thru P | 14 thru 15 | 3 1/2" | 1 3/8" | 3 3/4" |
| NG13 | 14 thru 15 | 3 1/2" | 1 1/2" | 3 3/4" |
| NG11 & NG12 | 14 thru 15 | 3 1/2" | 1 3/8" | 3 3/4" |



BEAM CLIPPING DIAGRAM

NOTES:

1. For Section A-A & B-B, see Sheet 15.
2. Holes in new diaphragms are to be field drilled using holes in existing connection as template.
3. According to existing plans, the end diaphragm is level. The contractor shall verify in Field before ordering Materials.

**FINGER PLATE PLAN &
SECTIONS - EAST
STRUCTURE NO. 016-3240**

TYLIN INTERNATIONAL

| DESIGNED | BY | LS | REVISIONS |
|----------|----------|----|-----------|
| CHECKED | AMD | LS | NAME DATE |
| DRAWN | DY | LS | |
| CHECKED | AMD | LS | |
| DATE | 08/02/10 | | |

| SHEET NO. | F.A.I. RTE. | SECTION | COUNTY | TOTAL SHEETS | SHEET NO. |
|---|-------------|--------------------|--------------------|--------------|-----------|
| 13 | 55 | 0711.2R & 1011.1BR | COOK | 200 | 180 |
| 33 SHEETS | | | CONTRACT NO. 60L39 | | |
| FED. ROAD DIST. NO. 1 ILLINOIS FED. AID PROJECT | | | | | |