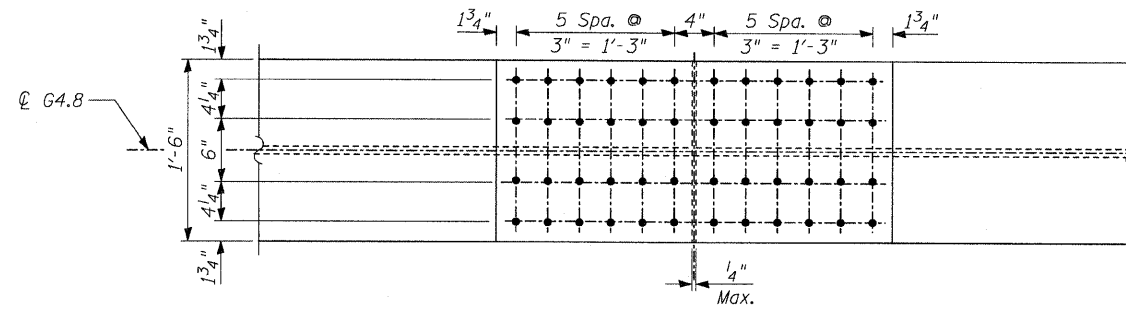
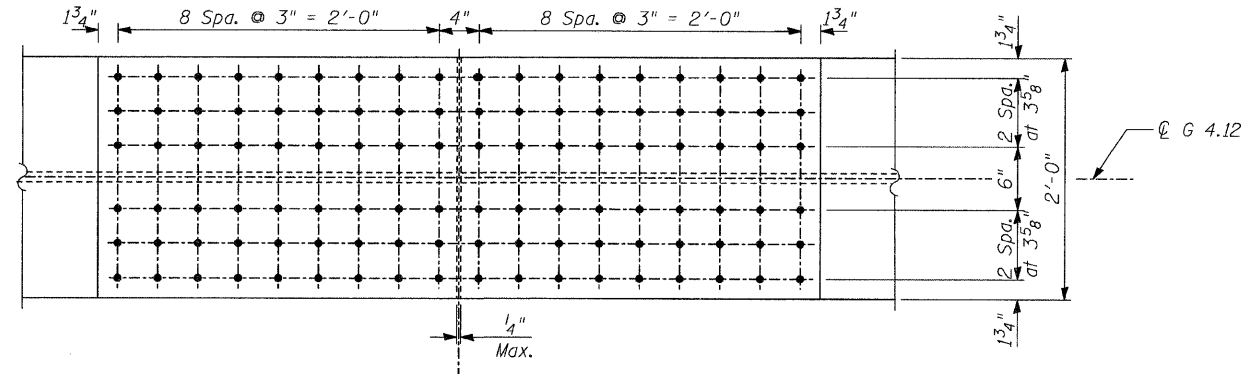


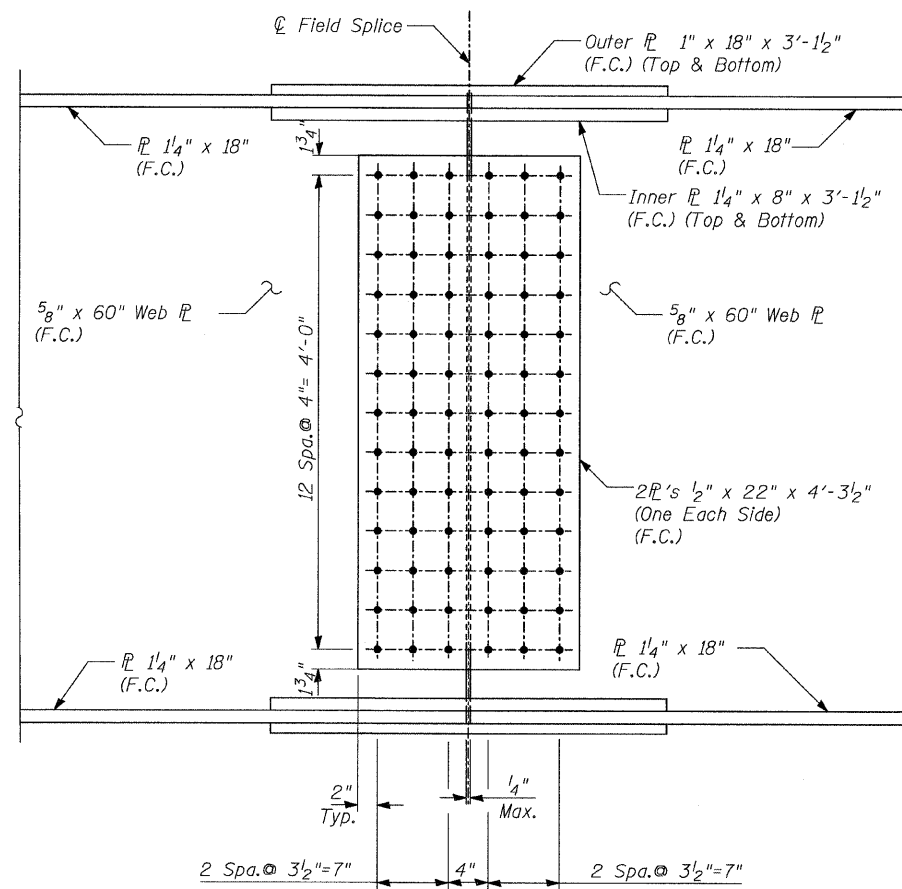
STATE OF ILLINOIS
DEPARTMENT OF TRANSPORTATION



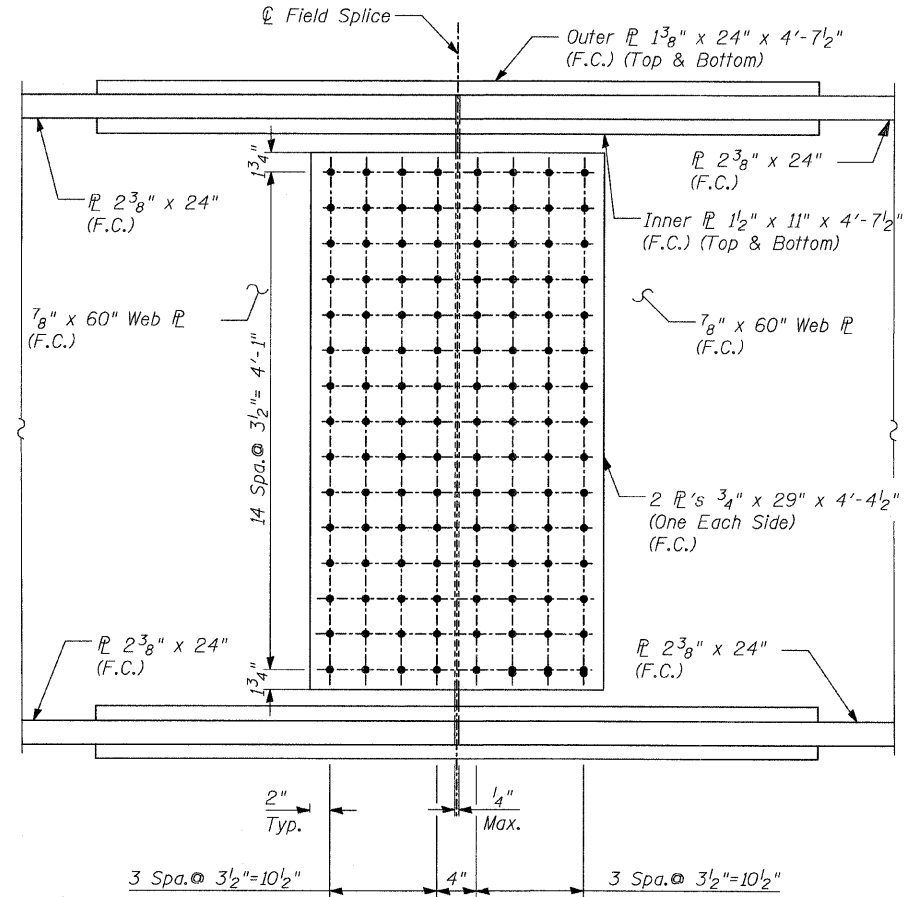
PLAN - TOP & BOTTOM FLANGE
FIELD SPLICE FS-4.1



PLAN - TOP & BOTTOM FLANGE
FIELD SPLICE FS-4.2 & 4.3



ELEVATION



ELEVATION

NOTES:

- All steel shall be AASHTO M270 Grade 50.
- F.C. denotes Fracture Critical Material, AASHTO Zone 2.

FIELD SPLICES
RAMP 4
STRUCTURE NO. 016-0724

TYLIN INTERNATIONAL

DESIGNED - EKH, JMA	REVISIONS	
CHECKED - AMD,	NAME	DATE
DRAWN - EKH, JMA		
CHECKED - AMD,		
DATE - 08/02/10		

SHEET NO. 131 137 SHEETS	F.A.I. RTE.	SECTION	COUNTY	TOTAL SHEETS	SHEET NO.
	55	0711.2R & 1011.1BR	COOK	200	161
FED. ROAD DIST. NO. 1 ILLINOIS			FED. AID PROJECT		
CONTRACT NO. 60L39					

p:\01345\beam and bearing fabrication\155f41\frame\19.dgn 8/5/2010 4:57:07 PM