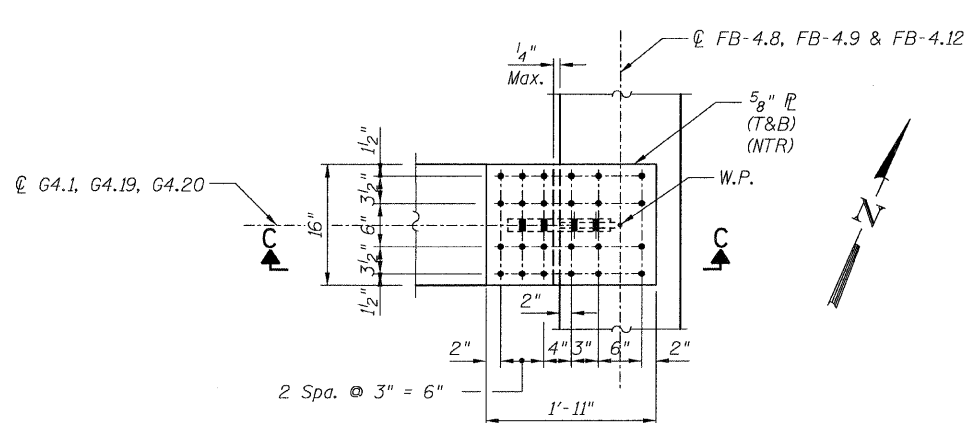
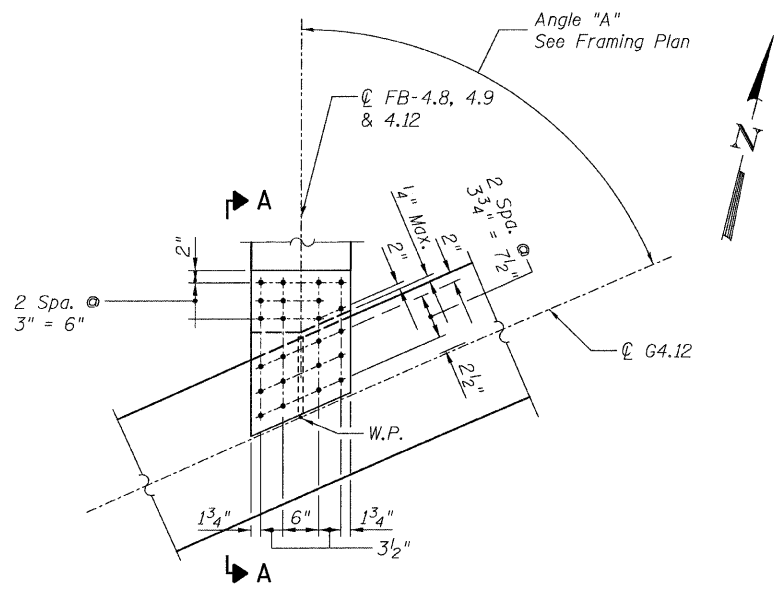
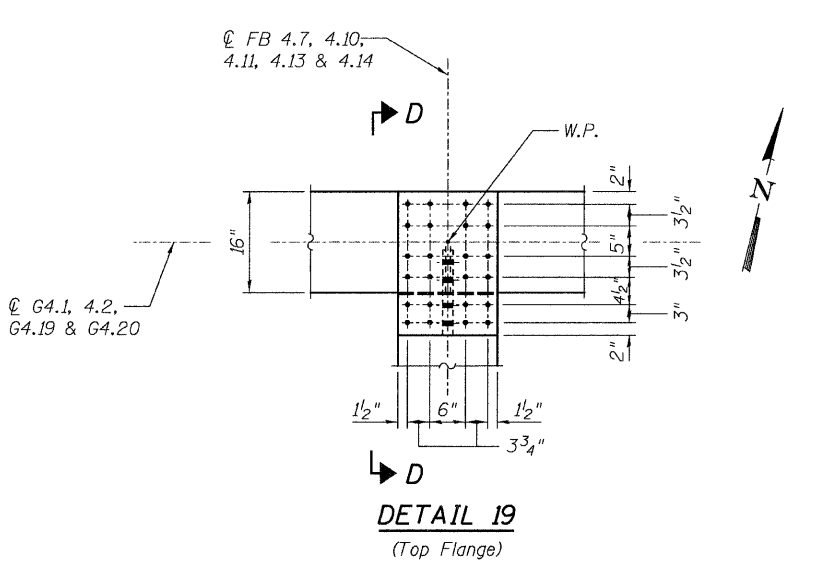


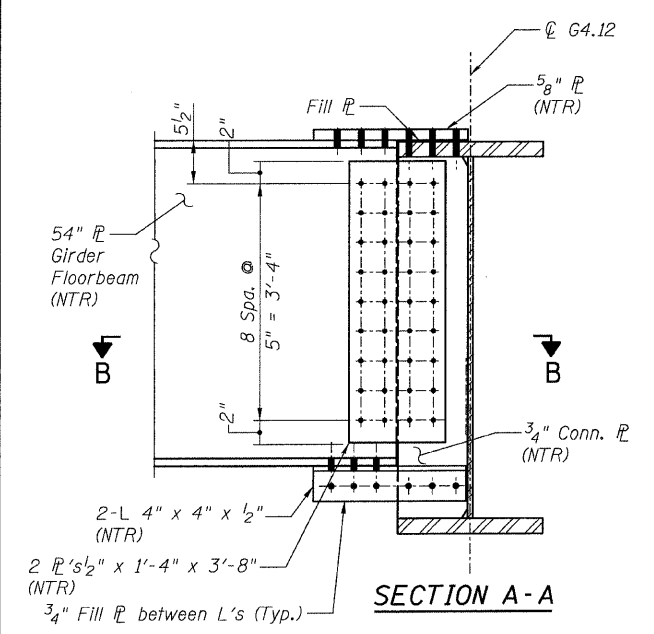
STATE OF ILLINOIS
DEPARTMENT OF TRANSPORTATION



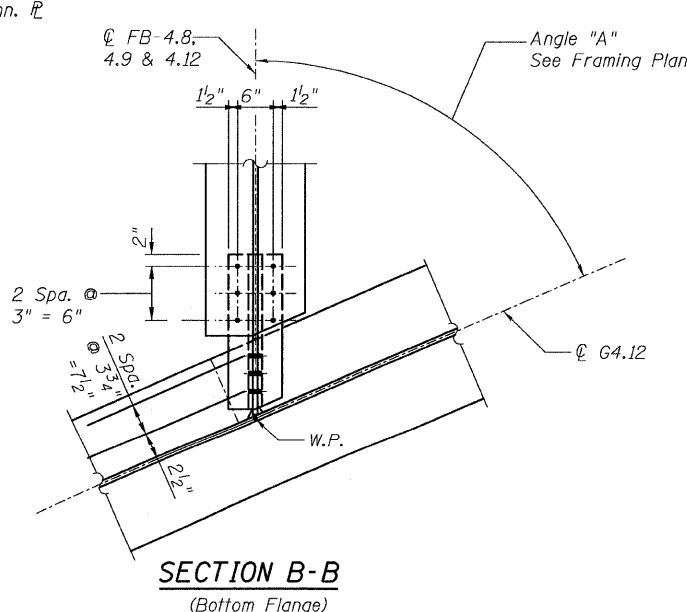
DETAIL 18
(Top Flange)
(Bottom Flange is similar.)



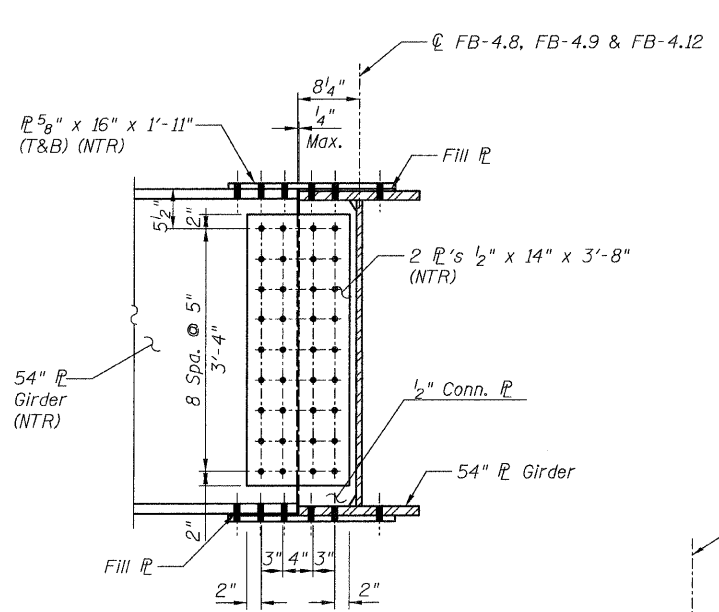
DETAIL 19
(Top Flange)



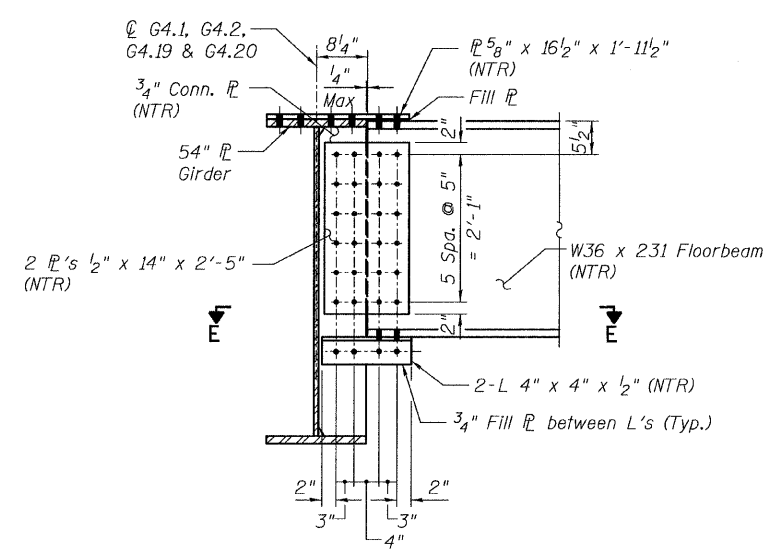
SECTION A-A



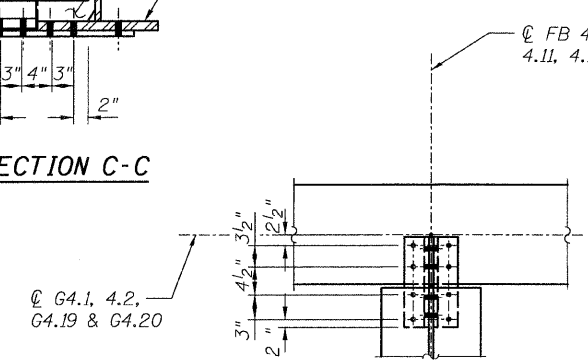
SECTION B-B
(Bottom Flange)



SECTION C-C



SECTION D-D



SECTION E-E

- NOTES:**
- All steel shall be AASHTO M270 Grade 50.
 - For Details 17 and 18 locations, see Sheet 44.
 - Load carrying components designated "NTR" shall conform to the Supplemental Requirements for Notch Toughness, Zone 2.
 - CJP Weld - denotes Complete Joint Penetration Weld.

CONNECTION DETAILS 17, 18 & 19
RAMP 4 FLARE
STRUCTURE NO. 016-0724

TYLIN INTERNATIONAL	DESIGNED - EKH, JMA	REVISIONS		SHEET NO.130A 137 SHEETS	F.A.I RTE. 55	SECTION 0711.2R & 1011.1BR	COUNTY COOK	TOTAL SHEETS 200	SHEET NO. 160A
	CHECKED - AMD,	NAME	DATE						
	DRAWN - EKH, JMA								
	CHECKED - AMD,								
	DATE - 08/02/10								
					CONTRACT NO. 60L39				
					FED. ROAD DIST. NO. 1 ILLINOIS FED. AID PROJECT				

p:\01345\beam and bearing fabrication\15574\framedtl18a.dgn 8/13/2010 4:44:19 PM