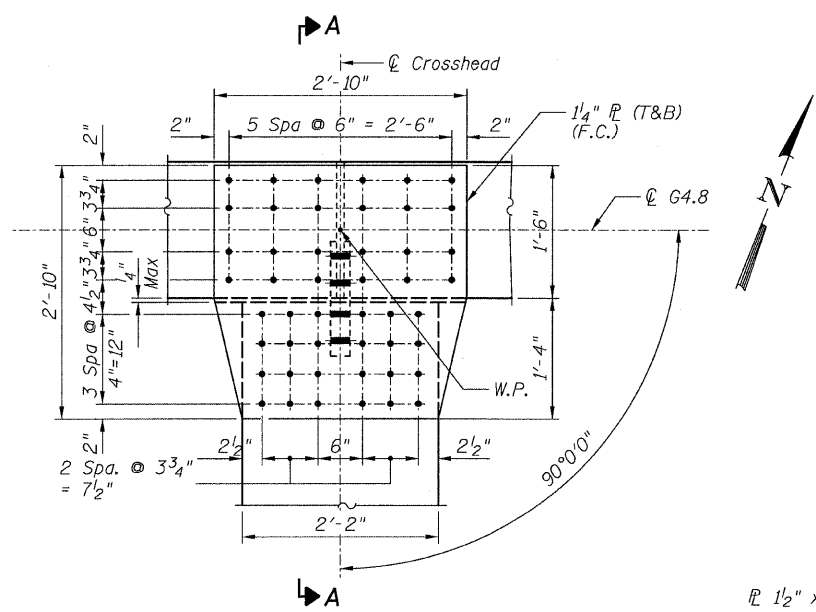
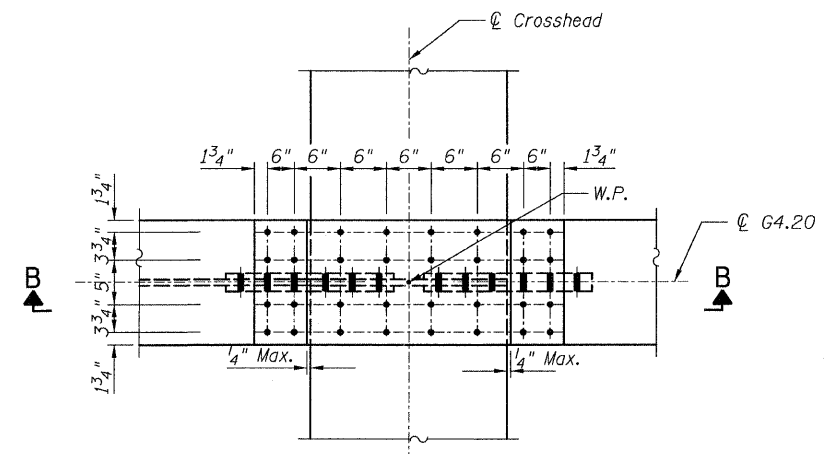


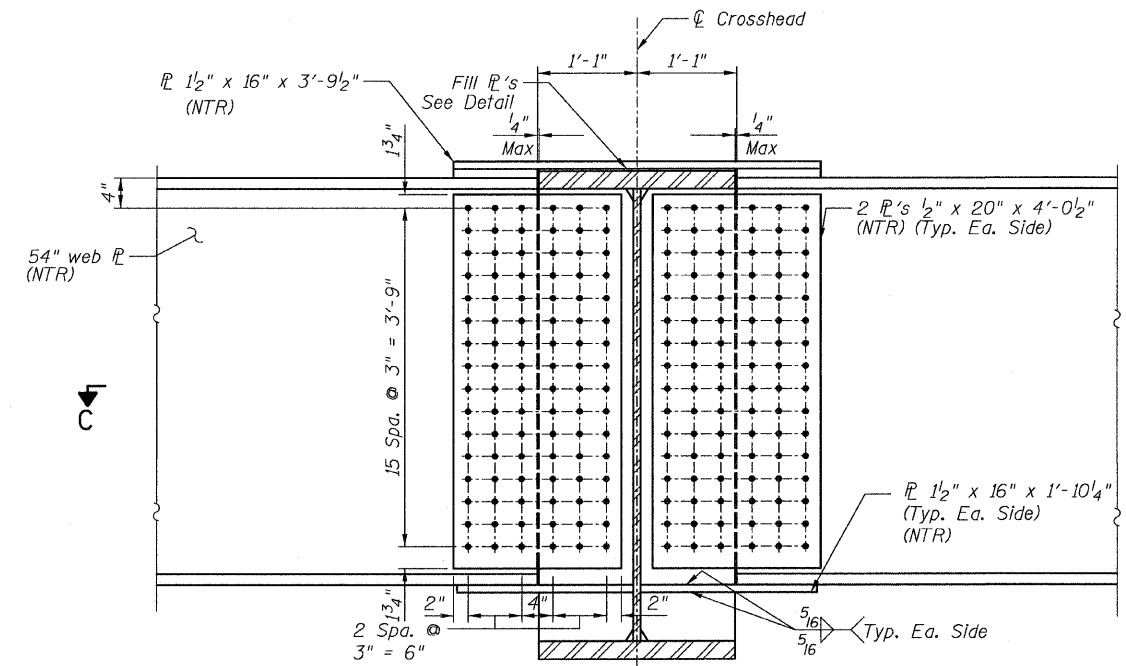
STATE OF ILLINOIS  
DEPARTMENT OF TRANSPORTATION



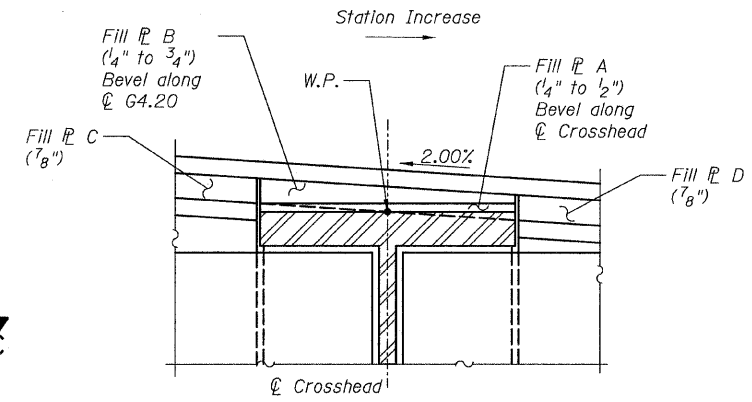
**DETAIL 15**  
(Top Flange)  
(Bot. Flange Similar)



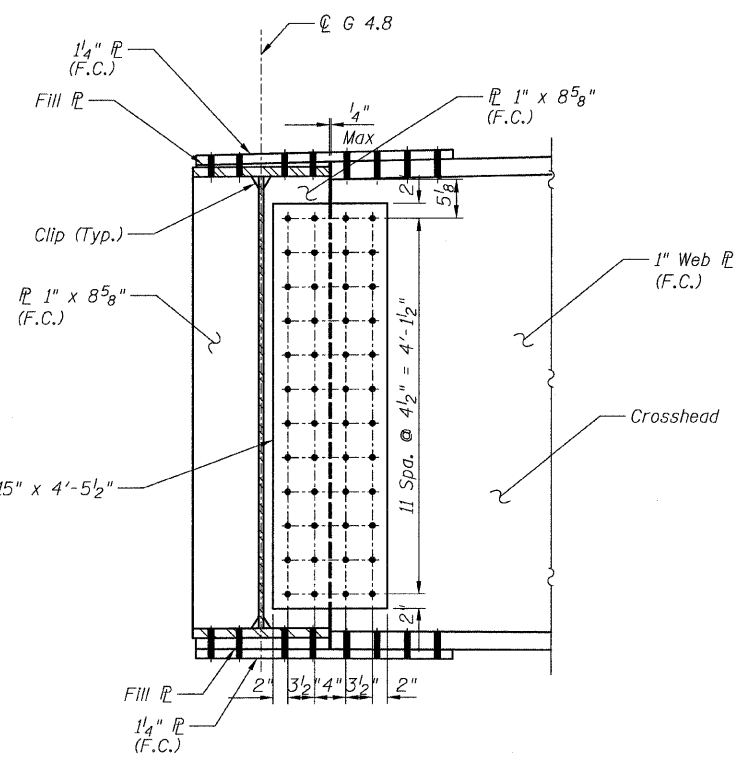
**DETAIL 16**  
(Top Flange)



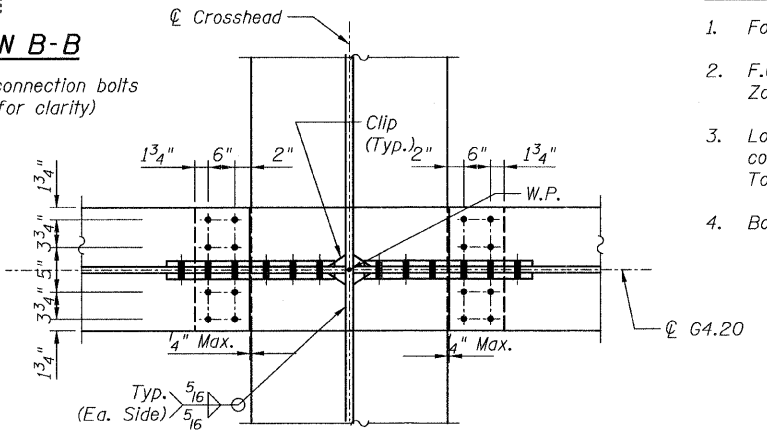
**SECTION B-B**  
(Top & bottom connection bolts not shown for clarity)



**FILL FR DETAIL**



**SECTION A-A**



**SECTION C-C**

**NOTES:**

1. For Details 15 and 16 locations, see Sheet 44.
2. F.C. - denotes Fracture Critical Material, AASHTO Zone II.
3. Load carrying components designated "NTR" shall conform to the Supplemental Requirements for Notch Toughness, Zone 2.
4. Bolts for connection detail 15 shall be 1" φ with 1/16" holes.

**CONNECTION DETAILS 15&16**  
**RAMP 4 FLARE**  
**STRUCTURE NO. 016-0724**

<b>TYLIN INTERNATIONAL</b>	DESIGNED - EKH, JMA	REVISIONS		SHEET NO. 130	F.A.I RTE.	SECTION	COUNTY	TOTAL SHEETS	SHEET NO.							
	CHECKED - AMD,	NAME	DATE							75	0711.2R & 1011.1BR	COOK	200	160		
	DRAWN - EKH, JMA														CONTRACT NO. 60L39	
	CHECKED - AMD,															FED. ROAD DIST. NO. 1   ILLINOIS   FED. AID PROJECT
	DATE - 08/02/10															

8/13/2010 6:12:20 PM p:\01345\beam and bearing fabrication\5544\frame\118.dgn