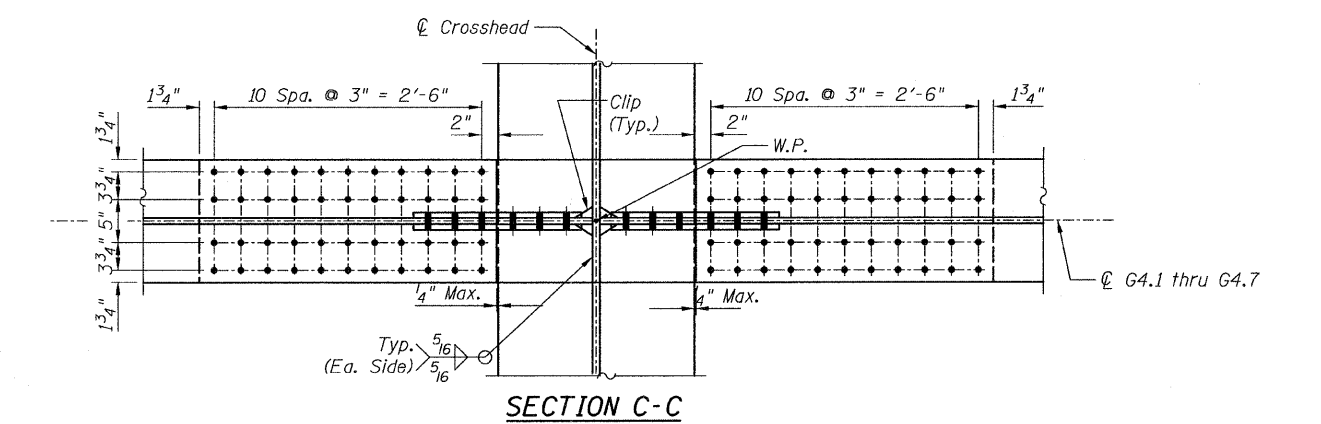
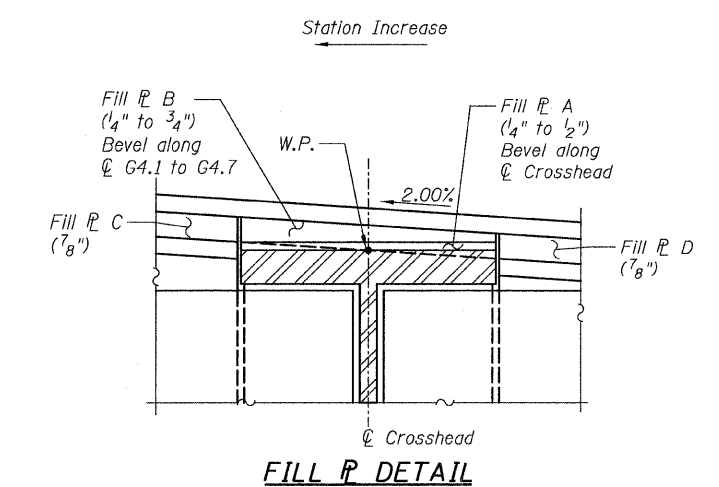
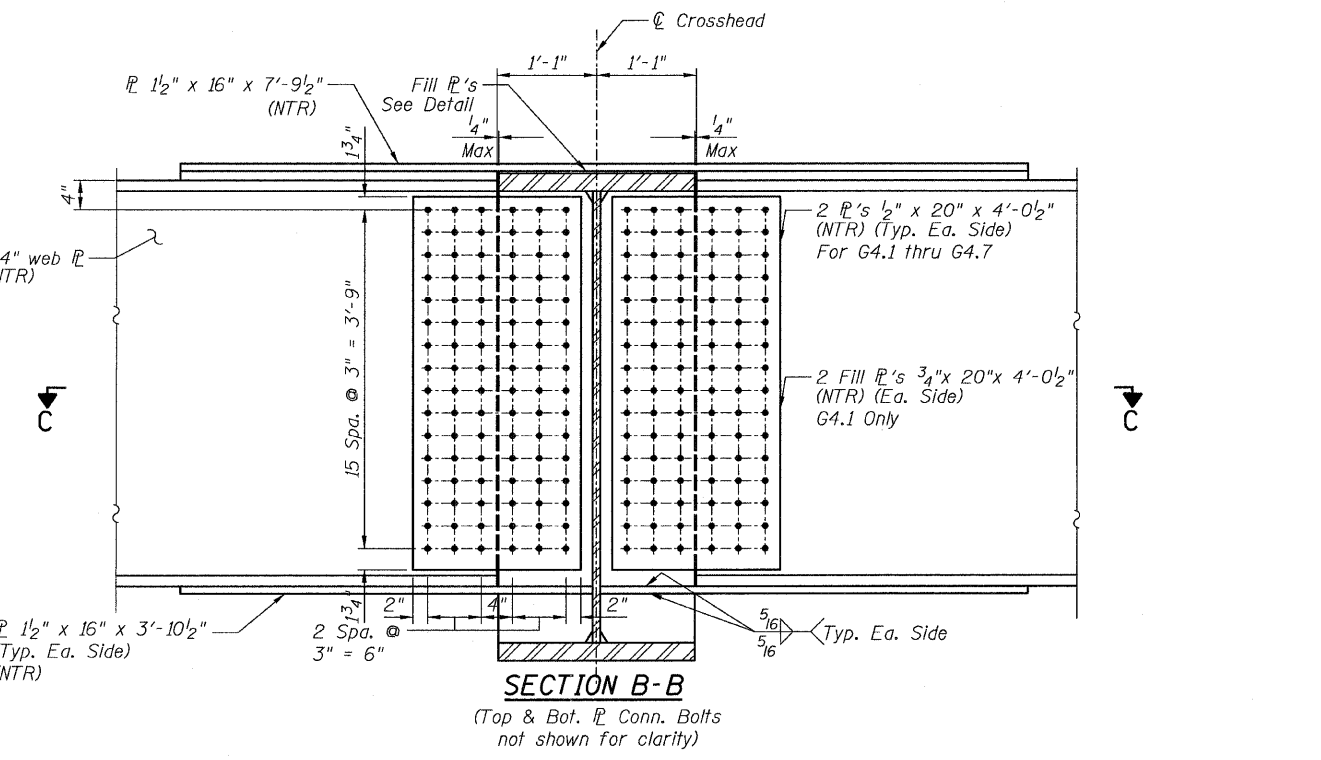
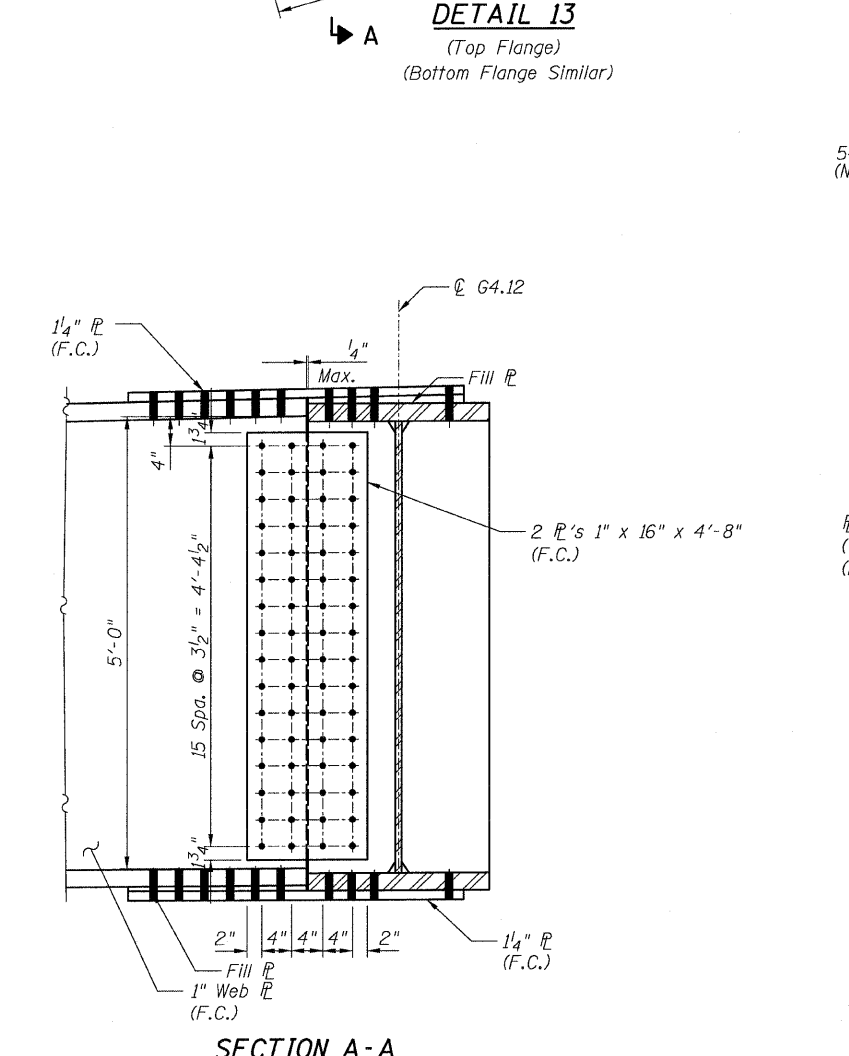
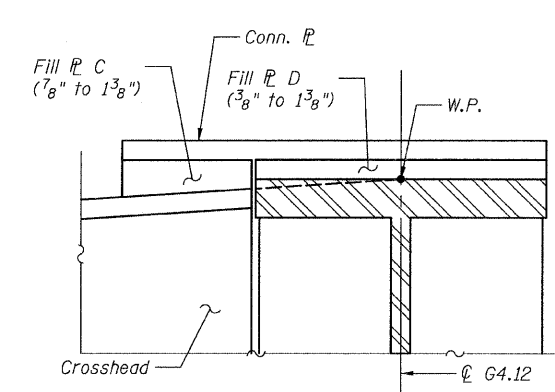
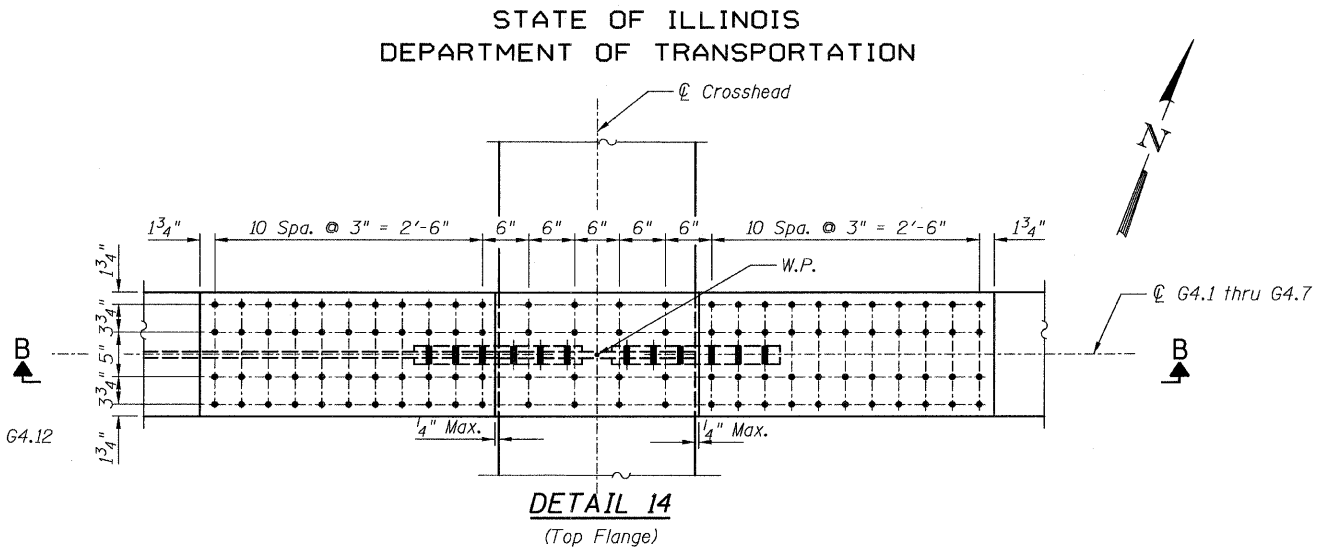
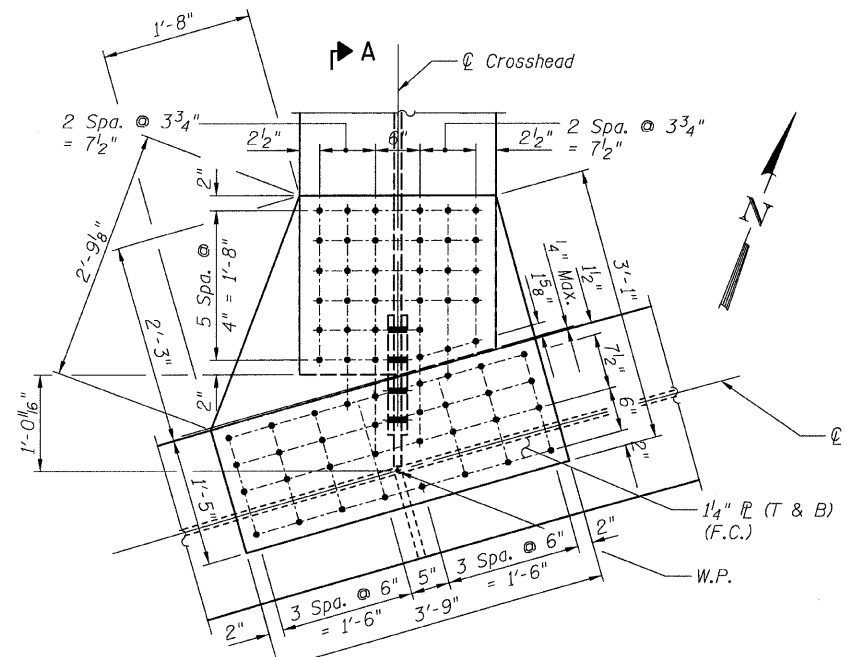


STATE OF ILLINOIS
DEPARTMENT OF TRANSPORTATION



- NOTES:**
- All steel shall be AASHTO M270 Grade 50.
 - For Details 13 and 14 locations, see Sheet 44.
 - F.C. - denotes Fracture Critical Material, AASHTO Zone II.
 - Load carrying components designated "NTR" shall conform to the Supplemental Requirements for Notch Toughness, Zone 2.

**CONNECTION DETAILS 13&14
RAMP 4 FLARE
STRUCTURE NO. 016-0724**

TYLIN INTERNATIONAL	DESIGNED - EKH, JMA	REVISIONS		SHEET NO. 129	F.A.I RTE. 55	SECTION 0711.2R & 1011.1BR	COUNTY COOK	TOTAL SHEETS 200	SHEET NO. 159			
	CHECKED - AMD,	NAME	DATE							137 SHEETS	CONTRACT NO. 60L39	
	DRAWN - EKH, JMA											FED. ROAD DIST. NO. 1 ILLINOIS FED. AID PROJECT
	CHECKED - AMD,											
DATE - 08/02/10												

8/13/2010 5:35:32 PM p:\01345\beam and bearing fabrication\55f4frame\detail17.dwg