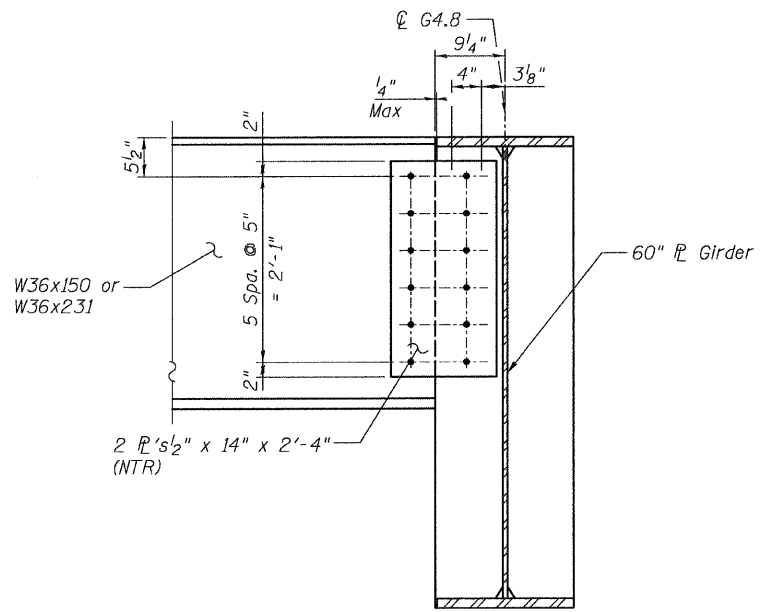
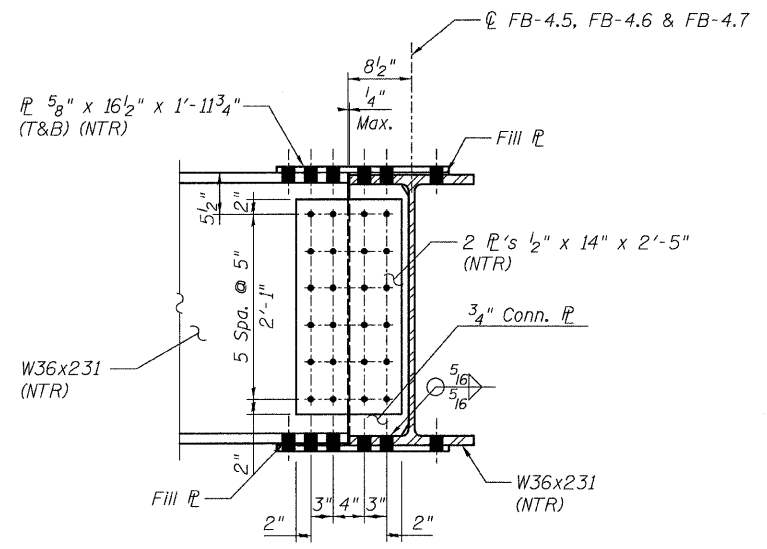
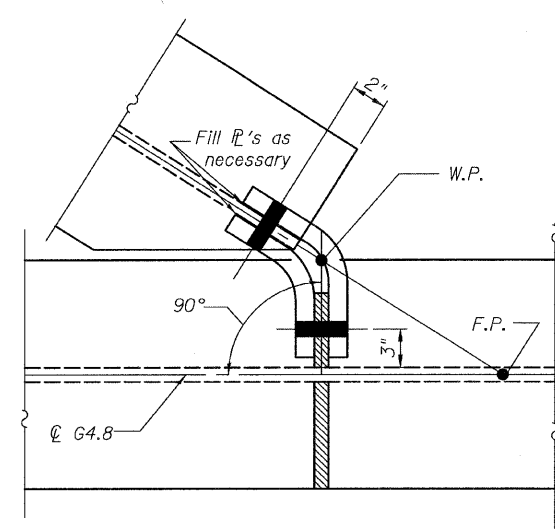
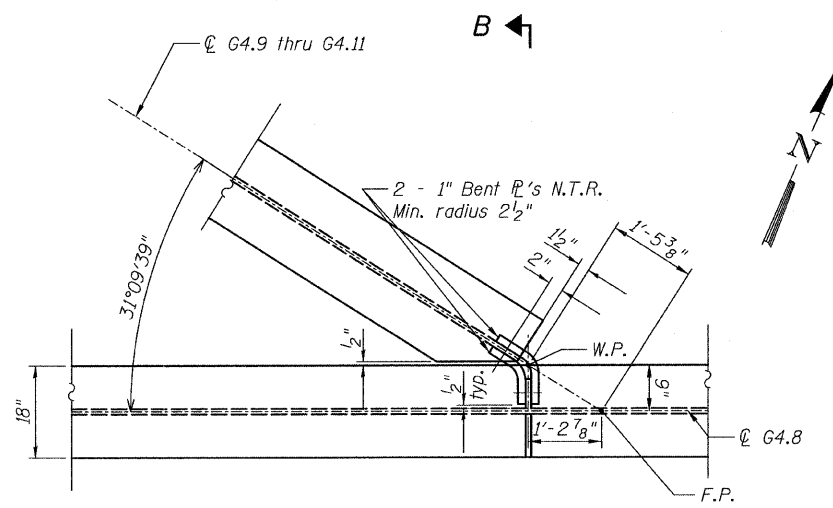
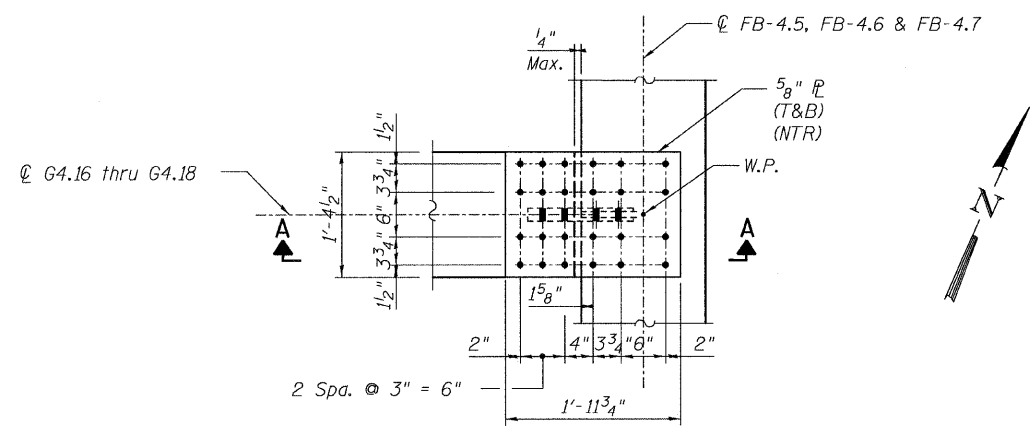


STATE OF ILLINOIS  
DEPARTMENT OF TRANSPORTATION



- NOTES:**
- All steel shall be AASHTO M270 Grade 50.
  - For Details 11 and 12 locations, see Sheet 44.
  - F.C. - denotes Fracture Critical Material, AASHTO Zone II.
  - Load carrying components designated "NTR" shall conform to the Supplemental Requirements for Notch Toughness, Zone 2.

**CONNECTION DETAILS 11&12  
RAMP 4 FLARE  
STRUCTURE NO. 016-0724**

<b>TYLIN INTERNATIONAL</b>	DESIGNED - EKH, JMA	REVISIONS		SHEET NO. 28 137 SHEETS	F.A.I RTE. 55	SECTION 0711.2R & 1011.1BR	COUNTY COOK	TOTAL SHEETS 200	SHEET NO. 158				
	CHECKED - AMD,	NAME	DATE							CONTRACT NO. 60L39			
	DRAWN - EKH, JMA												
	CHECKED - AMD,												
	DATE - 08/02/10												
					FED. ROAD DIST. NO. 1 ILLINOIS FED. AID PROJECT								

p:\01345\beam\_and\_bearing\_fabrication\15f4\framedtl16.dgn 8/13/2010 5:26:26 PM