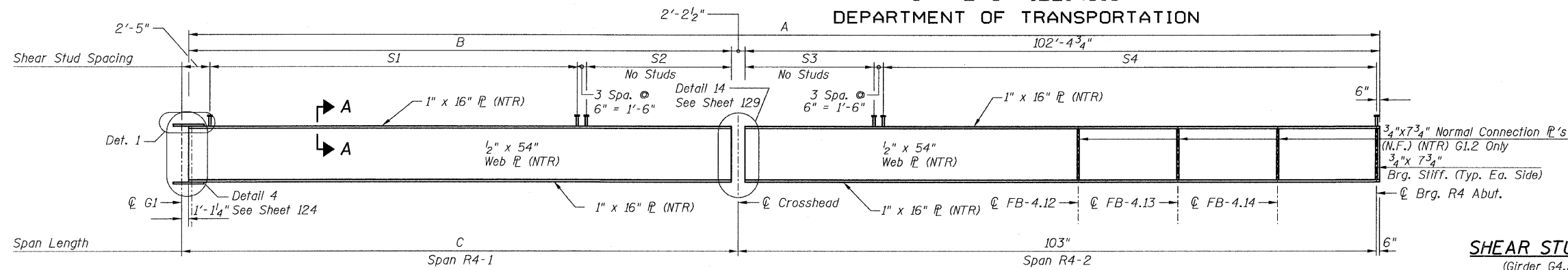


STATE OF ILLINOIS
DEPARTMENT OF TRANSPORTATION



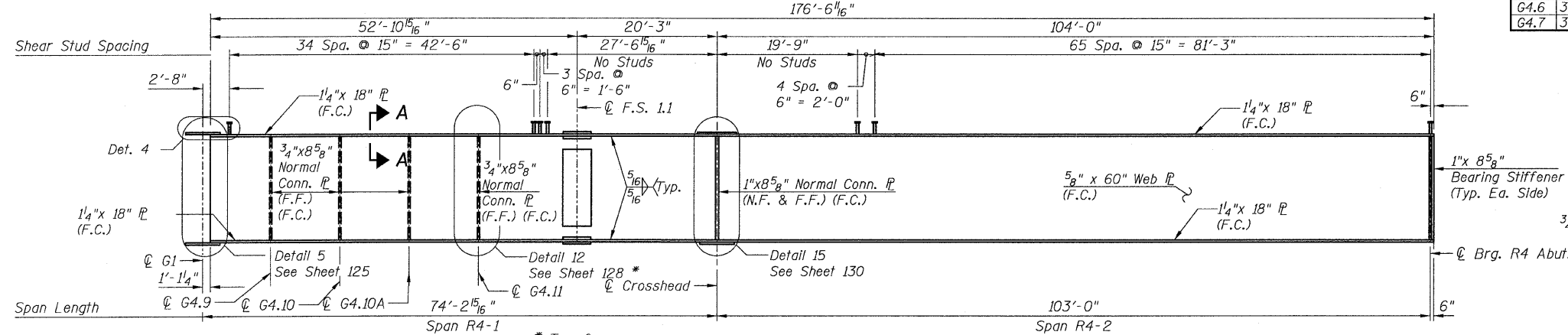
GIRDER DIMENSIONS
(Girder G4.2 thru G4.7)

	A	B	C
G4.2	193'-2 3/4"	87'-6 1/4"	89'-8 3/4"
G4.3	190'-7 1/8"	84'-11 5/16"	87'-1 1/8"
G4.4	188'-0 1/8"	82'-4 5/16"	84'-6 1/8"
G4.5	185'-5 7/8"	79'-9 3/8"	81'-11 7/8"
G4.6	182'-10 9/16"	77'-2 1/8"	79'-4 9/16"
G4.7	180'-4"	74'-7 1/2"	76'-10"

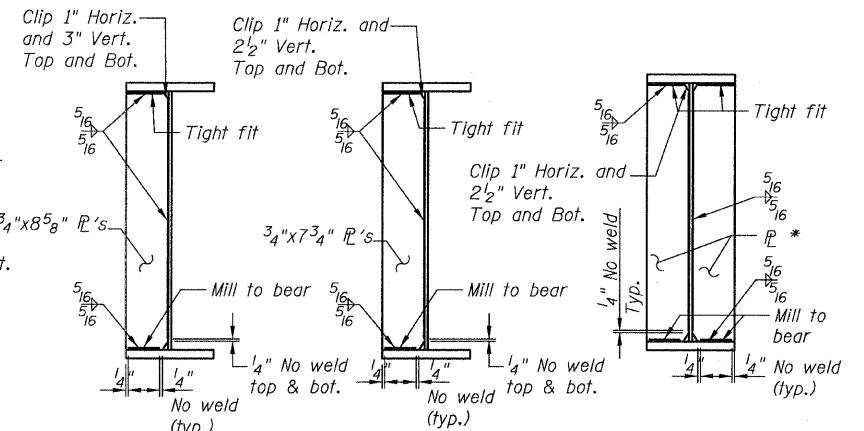
SHEAR STUD SPACINGS
(Girder G4.2 thru G4.7)

	S1	S2	S3	S4
G4.2	63 Spa. @ 15" = 78'-9"	5'-11 1/2"	36'-3 3/8"	51 Spa. @ 15" = 63'-9"
G4.3	45 Spa. @ 15" = 56'-3"	25'-10 3/16"	20'-5 7/8"	58 Spa. @ 18" = 79'-6"
G4.4	43 Spa. @ 15" = 53'-9"	25'-9 3/16"	20'-5 7/8"	58 Spa. @ 18" = 79'-6"
G4.5	41 Spa. @ 15" = 51'-3"	25'-8 3/16"	20'-5 7/8"	58 Spa. @ 18" = 79'-6"
G4.6	30 Spa. @ 18" = 45'-0"	29'-4 1/8"	20'-5 7/8"	58 Spa. @ 18" = 79'-6"
G4.7	36 Spa. @ 15" = 45'-0"	26'-9 3/4"	20'-5 7/8"	58 Spa. @ 18" = 79'-6"

GIRDER ELEVATION - G4.2 THRU G4.7
(Looking North)



GIRDER ELEVATION - G4.8
(Looking North)
(F.C.M.)



**CONN. P
DETAIL G4.8**

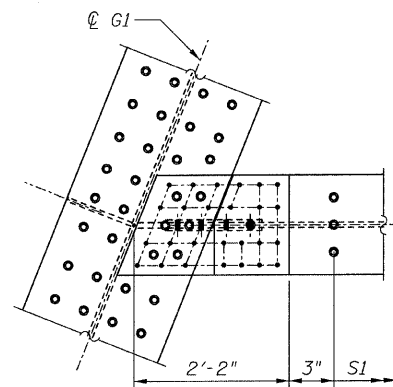
**CONN. P
DETAIL G4.2**

BEARING STIFFENER
* 3/4" x 7 3/4" (G1.2 to G1.7)
1" x 8 5/8" (G1.8)

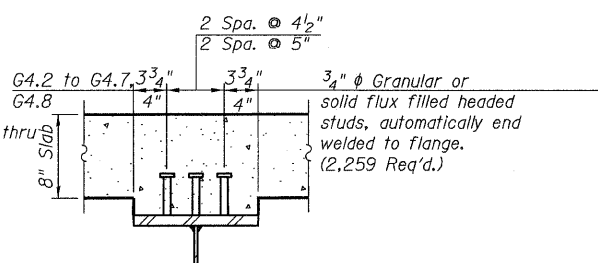
NOTES:

1. Load carrying components designated "NTR" shall conform to the supplemental requirements for Notch Toughness, Zone 2.
2. F.C. denotes Fracture Critical material, AASHTO Zone II.
3. For Field Splice details, See Sheet 131.
4. N.F. denotes Near Face.
5. F.F. denotes Far Face.
6. Girder G4.8 does not require camber.

**GIRDER ELEVATIONS 2
RAMP 4 FLARE
STRUCTURE NO. 016-0724**



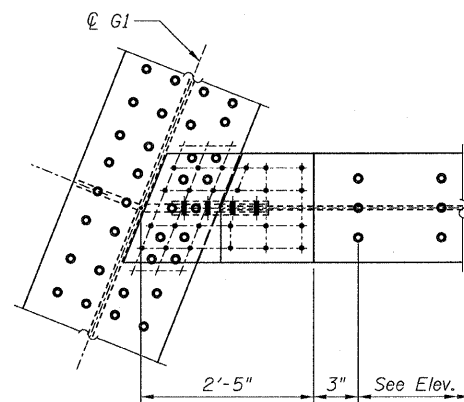
DETAIL 1



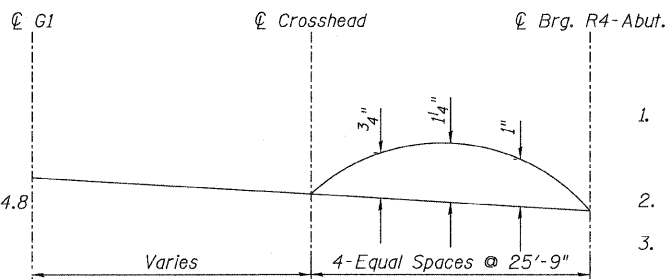
SECTION A-A
Not in contract

TOP OF WEB ELEVATIONS
(For Fabrication Only)

Location	Girder	G4.8
Centerline G1		628.30
Fieldsplice		626.66
Centerline Crosshead		626.05
Centerline Bearing R4-Abut.		624.19



DETAIL 4



CAMBER DIAGRAM
Girder G4.2 to G4.7

TOP OF WEB ELEVATIONS
(For Fabrication Only)

Location	Girder	G4.2	G4.3	G4.4	G4.5	G4.6	G4.7
Centerline G1		628.16	628.19	628.23	628.26	628.23	628.27
Centerline Crosshead		626.66	626.56	626.46	626.36	626.27	626.17
Centerline Bearing R4-Abut.		624.79	624.70	624.60	624.50	624.40	624.31

TYLIN INTERNATIONAL	DESIGNED - EKH, JMA, PK	REVISIONS		SHEET NO. 116 137 SHEETS	F.A.I RTE. 55	SECTION 0711.2R & 1011.1BR	COUNTY COOK	TOTAL SHEETS 200	SHEET NO. 146
	CHECKED - AMD,	NAME	DATE						
	DRAWN - EKH, JMA, PK								
	CHECKED - AMD,								
	DATE - 08/02/10				CONTRACT NO. 60L39				
					FED. ROAD DIST. NO. 1 ILLINOIS FED. AID PROJECT				