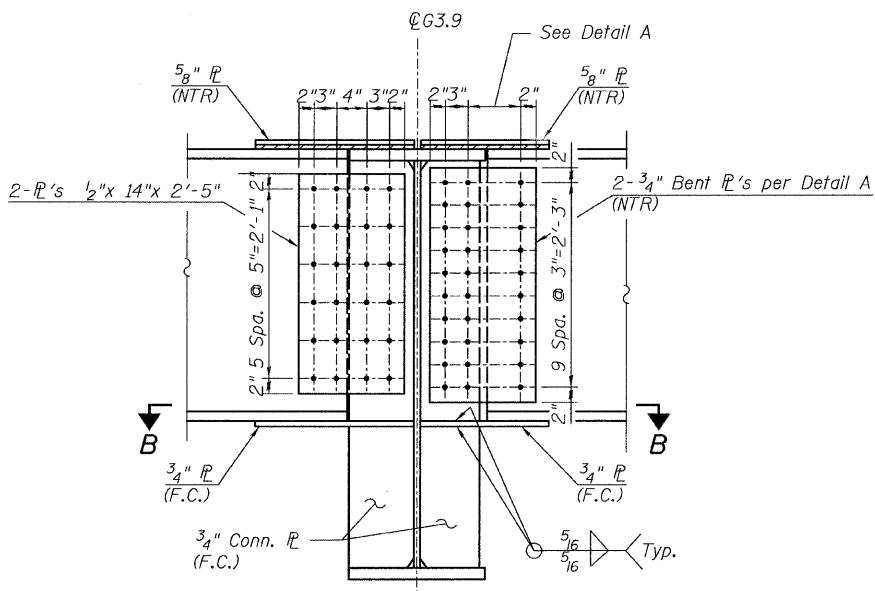
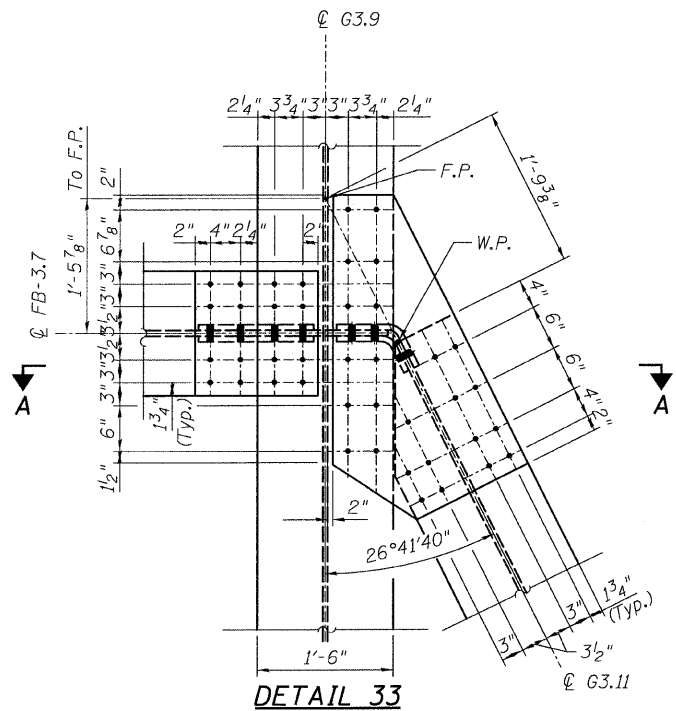


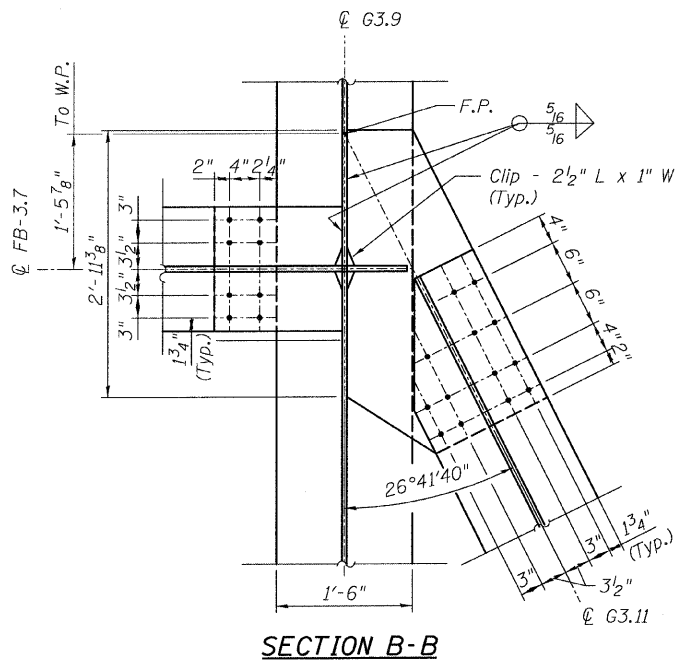
STATE OF ILLINOIS
DEPARTMENT OF TRANSPORTATION

NOTES:

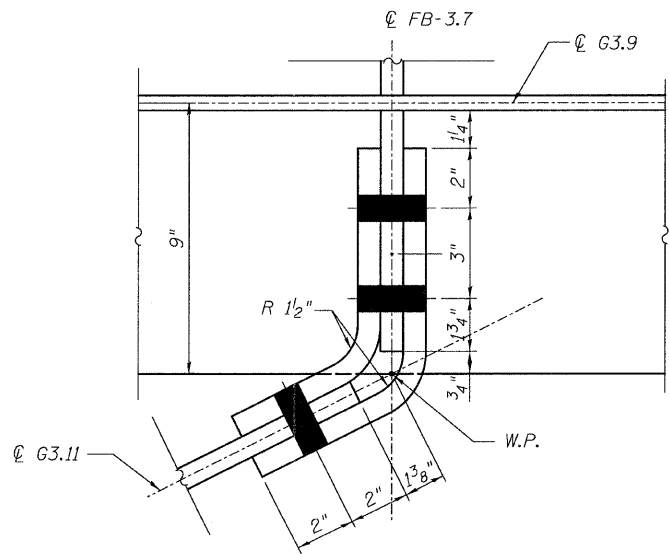
- All steel shall be AASHTO M 270 Grade 50.
- F.C. indicates Fracture Critical Material, AASHTO Zone 2.
- Load carrying components designated "N.T.R." shall conform to the supplemental requirements for Notch Toughness, Zone 2.



SECTION A-A



SECTION B-B



DETAIL A

**CONNECTION DETAIL 33
RAMP 3 FLARE
STRUCTURE NO. 016-0724**

TYLIN INTERNATIONAL	DESIGNED - JPN	REVISIONS							
	CHECKED - AMD,	NAME	DATE						
	DRAWN - MAU								
	CHECKED - AMD,								
	DATE - 08/02/10								
SHEET NO. 109					F.A.I RTE.	SECTION	COUNTY	TOTAL SHEETS	SHEET NO.
137 SHEETS					55	0711.2R & 1011.1BR	COOK	200	139
					CONTRACT NO. 60L39				
					FED. ROAD DIST. NO. 1 ILLINOIS FED. AID PROJECT				

p:\01345\beam and bearing fabrication\155f3f\amedt116.dgn 8/13/2010 4:44:06 PM