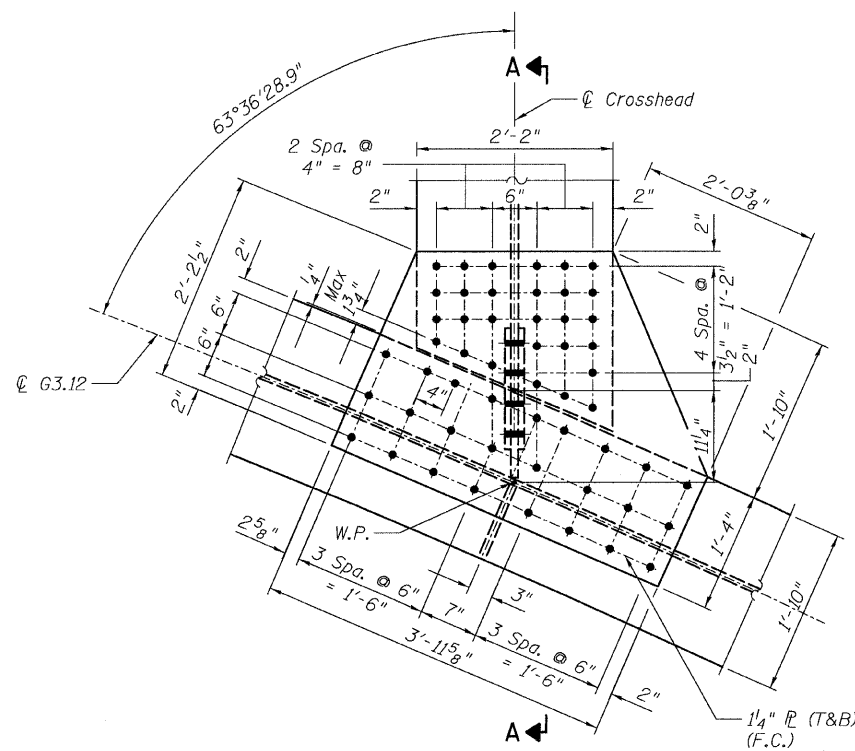
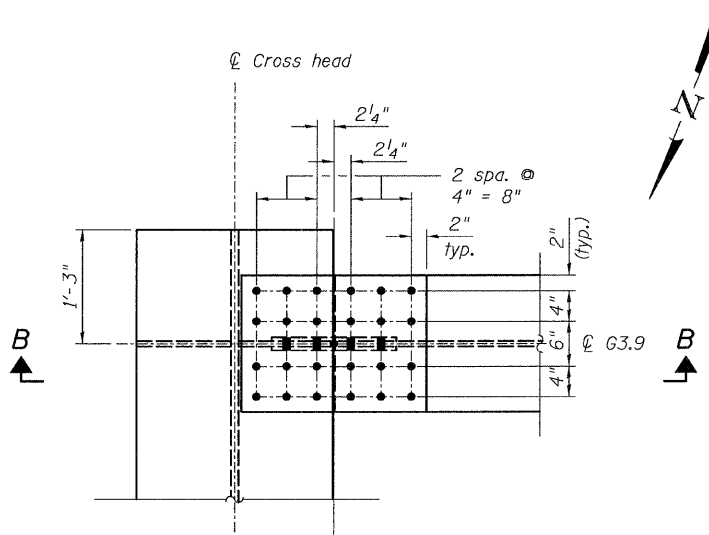


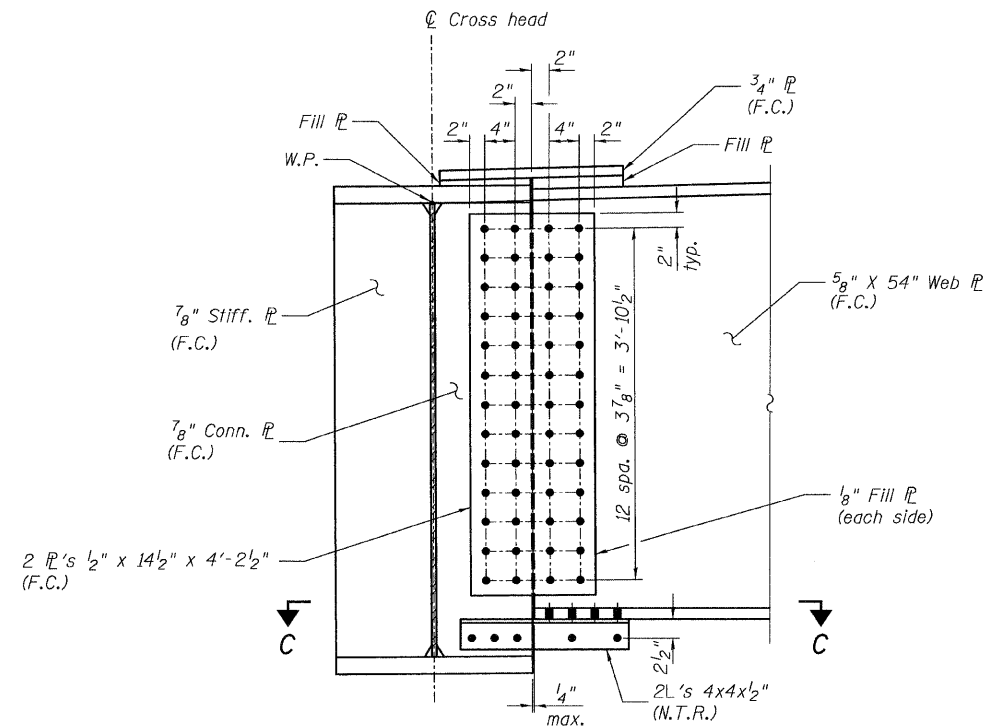
STATE OF ILLINOIS
DEPARTMENT OF TRANSPORTATION



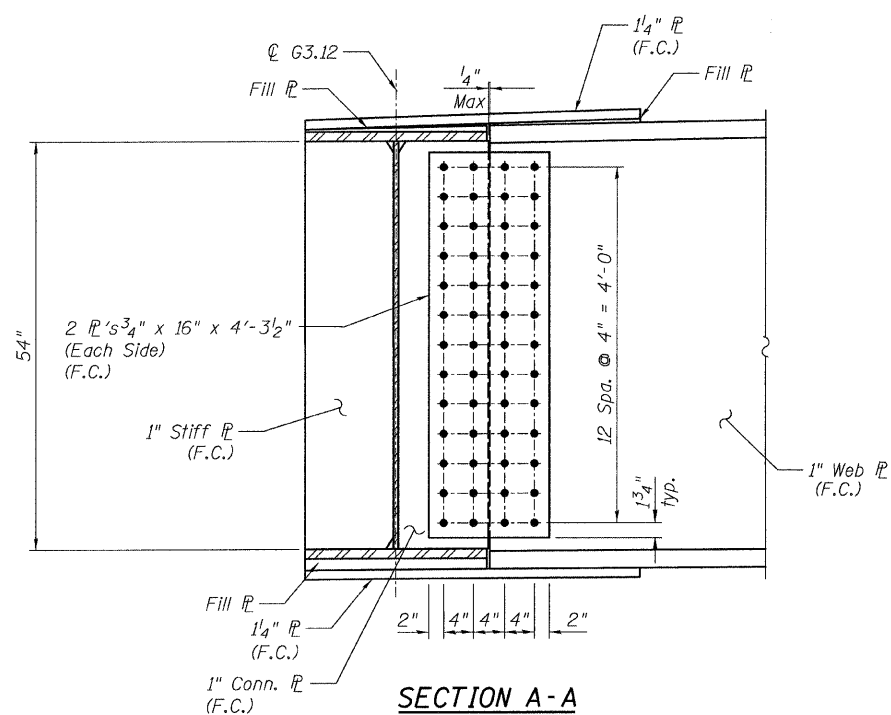
DETAIL 30
(Top Flange)
(Bottom Flange Similar)



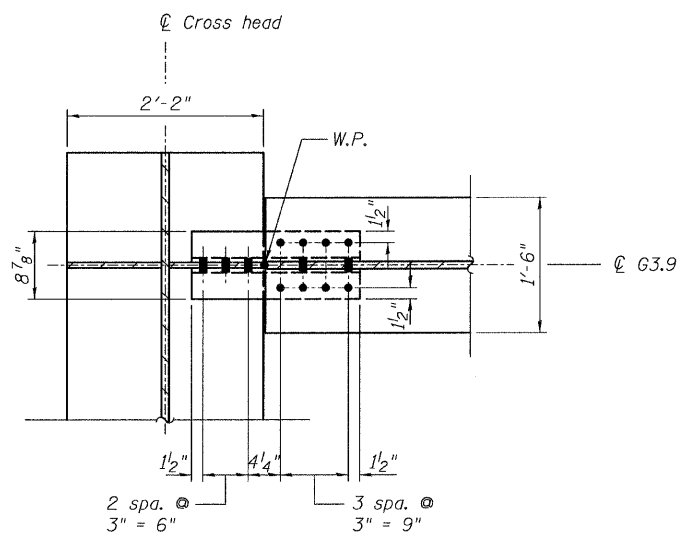
DETAIL 31
(Top flange)



SECTION B-B



SECTION A-A



SECTION C-C
(Bottom Flange)

NOTES:

1. All steel shall be AASHTO M 270 Grade 50.
2. F.C. indicates Fracture Critical Material, AASHTO Zone II.
3. Load carrying components designated "N.T.R." shall conform to the supplemental requirements for Notch Toughness, Zone 2.

CONNECTION DETAILS 30 & 31
RAMP 3 FLARE
STRUCTURE NO. 016-0724

TYLIN INTERNATIONAL	DESIGNED - JPN	REVISIONS		SHEET NO. 107 137 SHEETS	F.A.I RTE. 55	SECTION 0711.2R & 1011.1BR	COUNTY COOK	TOTAL SHEETS 200	SHEET NO. 137	
	CHECKED - AMD,	NAME	DATE							CONTRACT NO. 60L39
	DRAWN - JMA									
	CHECKED - AMD,									
DATE - 08/02/10				FED. ROAD DIST. NO. 1 ILLINOIS FED. AID PROJECT						

p:\01345\beam_and_bearing_fabrication\55f3f-amedt1.dgn 4:44:06 PM 8/13/2010