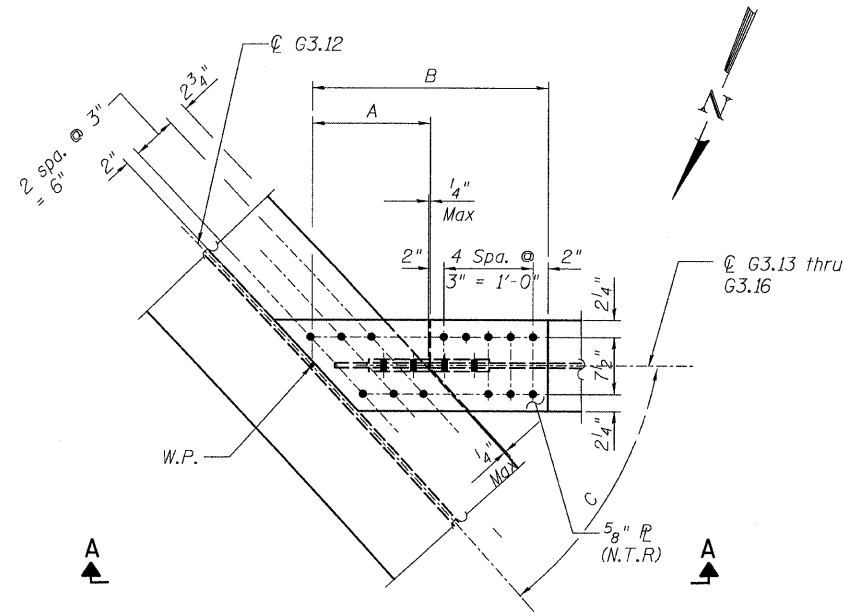
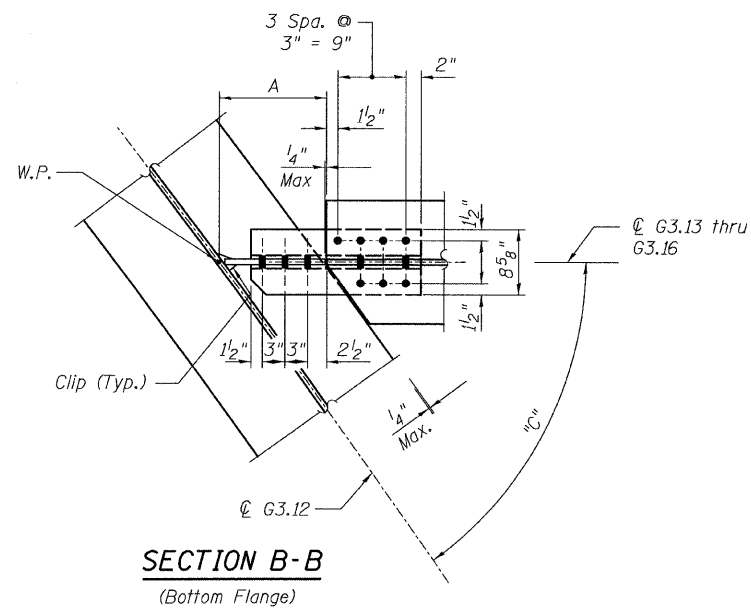


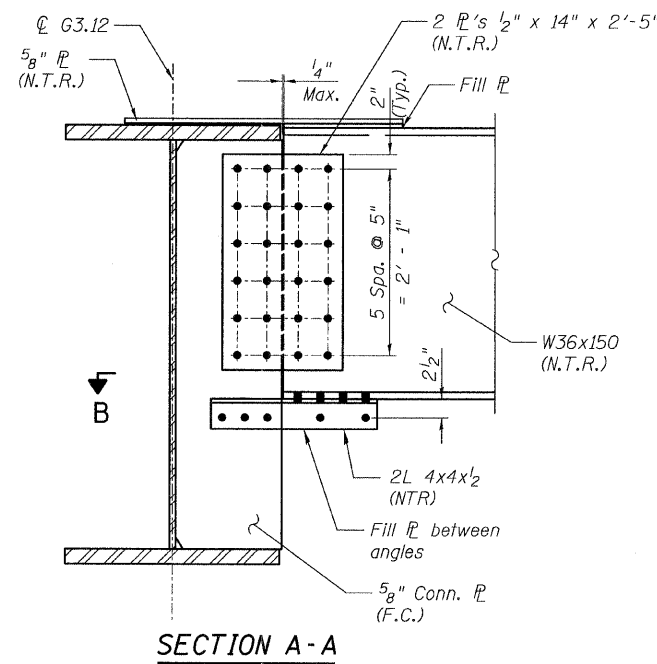
STATE OF ILLINOIS  
DEPARTMENT OF TRANSPORTATION



**DETAIL 25**  
(Top Flange)

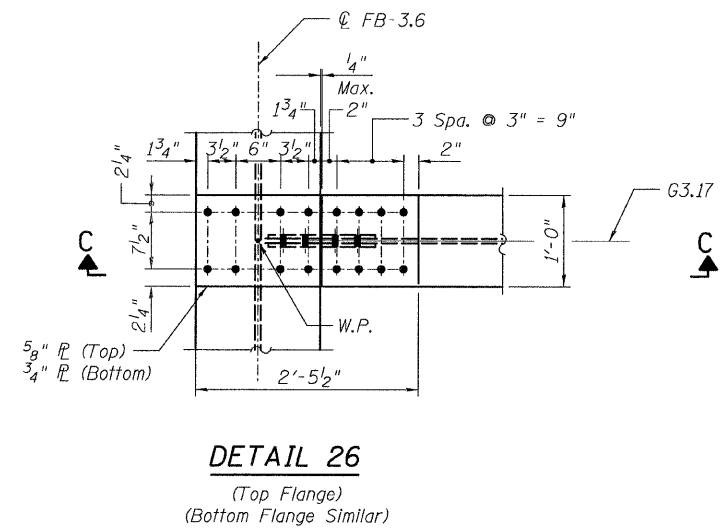


**SECTION B-B**  
(Bottom Flange)

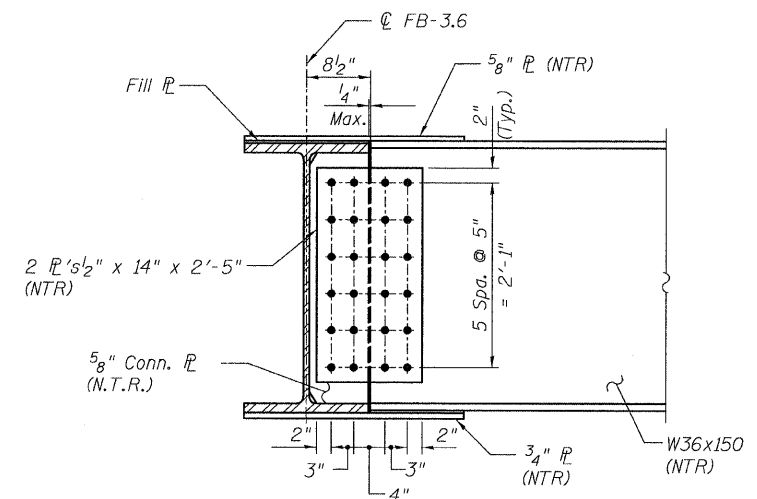


**SECTION A-A**

Girder	Dimensions		
	A	B	C
G3.13	1'-3 <sup>5</sup> / <sub>8</sub> "	2'-7 <sup>3</sup> / <sub>4</sub> "	45°20'28"
G3.14	1'-4 <sup>9</sup> / <sub>16</sub> "	2'-8 <sup>1</sup> / <sub>16</sub> "	42°16'0"
G3.15	1'-5 <sup>1</sup> / <sub>16</sub> "	2'-9 <sup>3</sup> / <sub>16</sub> "	38°59'55"
G3.16	1'-7 <sup>1</sup> / <sub>8</sub> "	2'-11 <sup>5</sup> / <sub>16</sub> "	35°28'54"



**DETAIL 26**  
(Top Flange)  
(Bottom Flange Similar)



**SECTION C-C**

**NOTES:**

- All steel shall be AASHTO M 270 Grade 50.
- F.C. indicates Fracture Critical material, AASHTO Zone II.
- Load carrying components designated "N.T.R." shall conform to the supplemental requirements for Notch Toughness, Zone 2.

**CONNECTION DETAILS 25 & 26**  
**RAMP 3 FLARE**  
**STRUCTURE NO. 016-0724**

<b>TYLIN INTERNATIONAL</b>	DESIGNED - JPN	REVISIONS		SHEET NO. 105	F.A.I. RTE.	SECTION	COUNTY	TOTAL SHEETS	SHEET NO.					
	CHECKED - AMD,	NAME	DATE							55	0711.2R & 1011.1BR	COOK	200	135
	DRAWN - JMA									CONTRACT NO. 60L39				
	CHECKED - AMD,									FED. ROAD DIST. NO. 1 ILLINOIS FED. AID PROJECT				
	DATE - 08/02/10			137 SHEETS										

p:\01345\beam and bearing fabrication\155f3f-ramed112.dgn 8/5/2010 2:51:30 PM