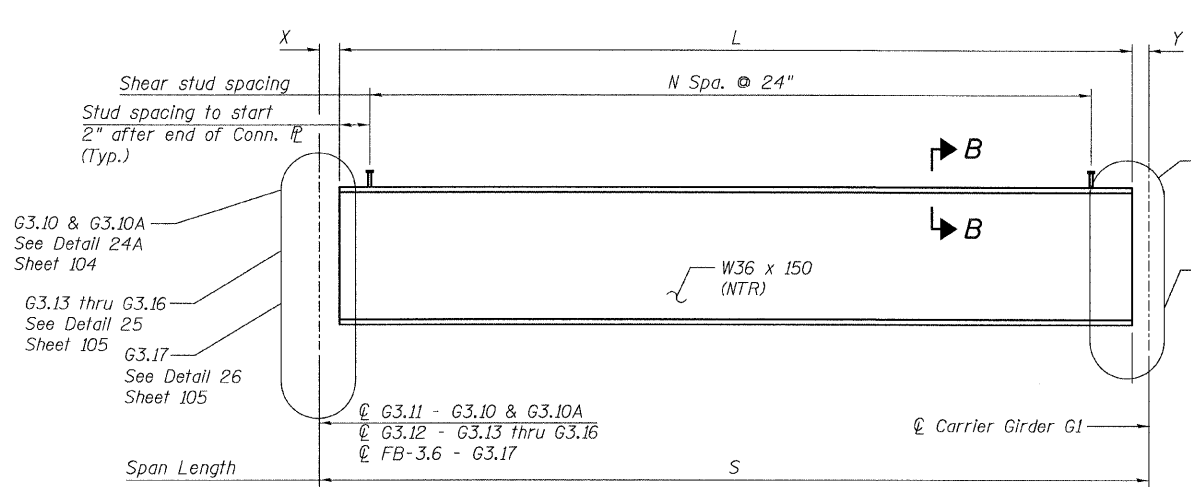
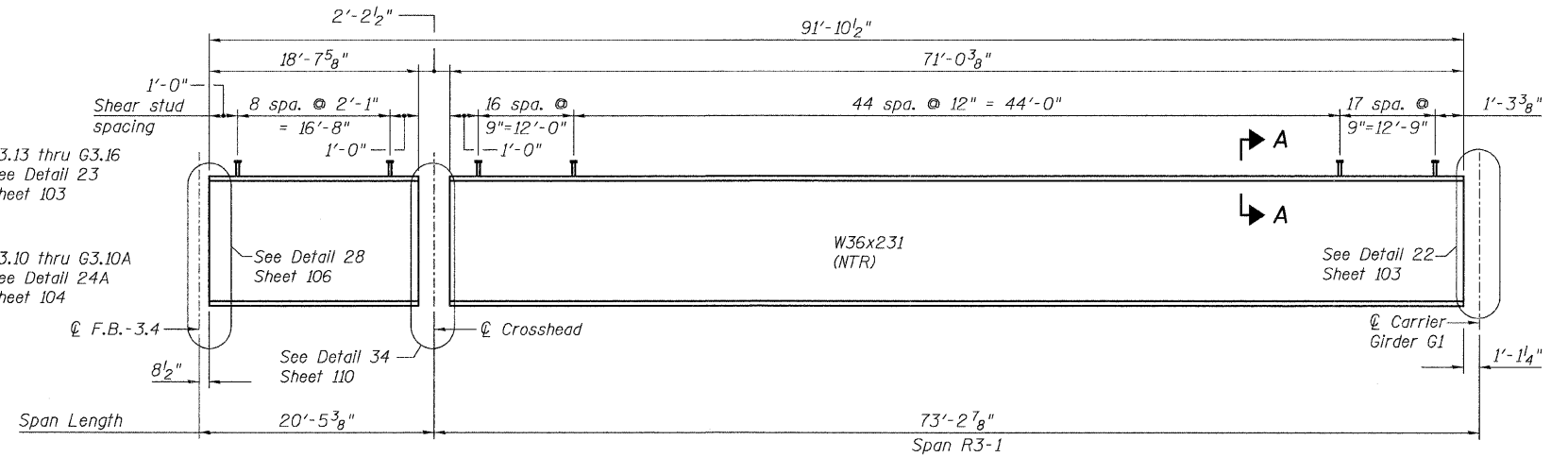


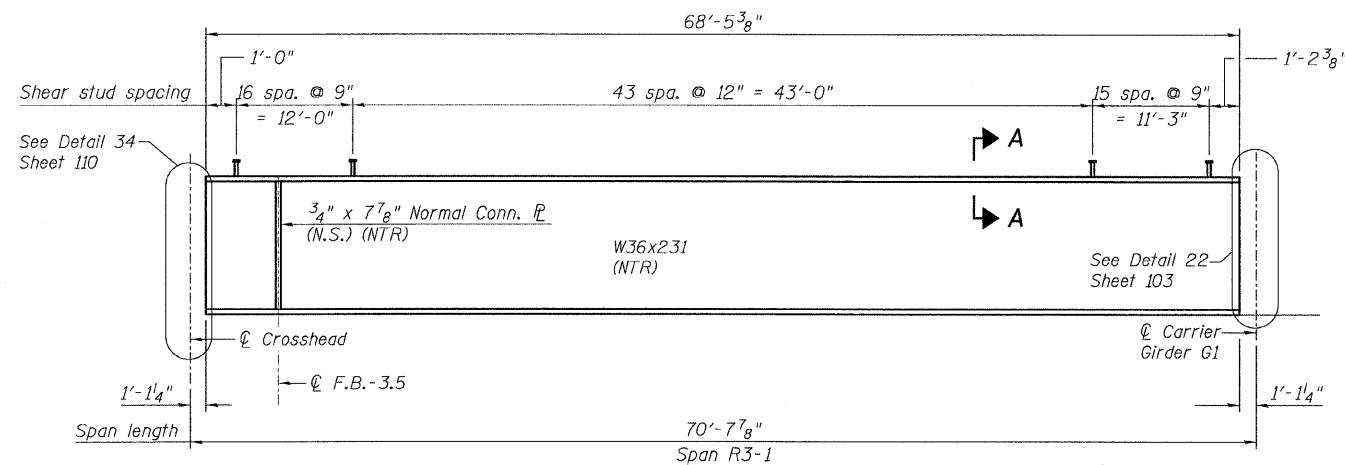
STATE OF ILLINOIS
DEPARTMENT OF TRANSPORTATION



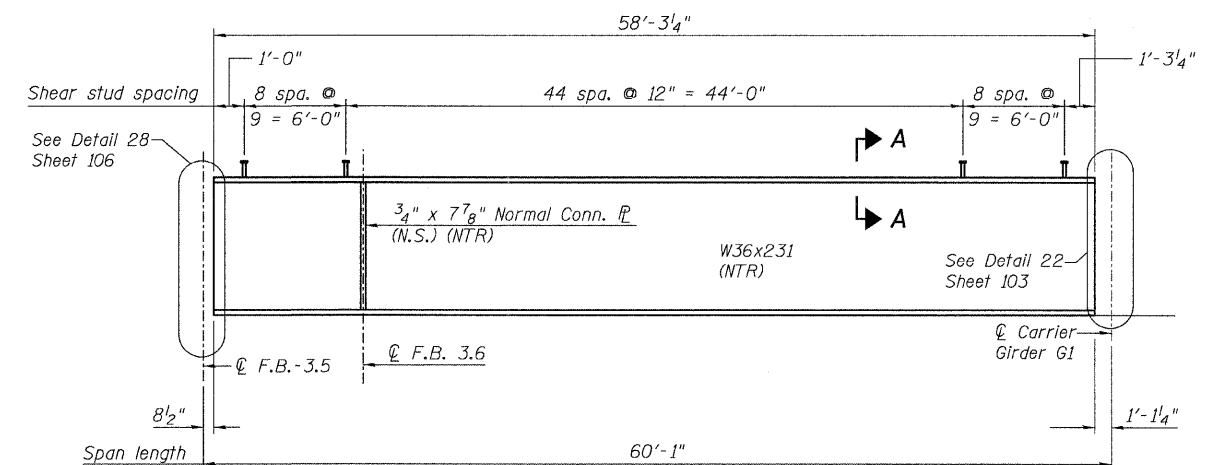
GIRDER ELEVATIONS - G3.10, G3.10A & G3.13 THRU G3.17
(Looking South)



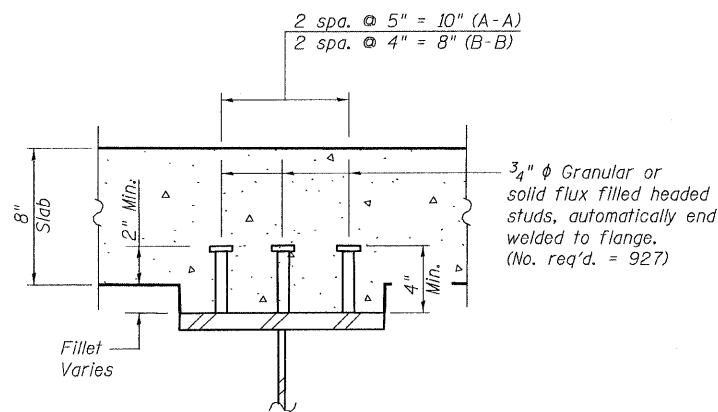
GIRDER ELEVATION - G3.20
(Looking South)



GIRDER ELEVATION - G3.19
(Looking South)



GIRDER ELEVATION - G3.18
(Looking South)



SECTION A-A & B-B
(Not in contract)

TABLE OF GIRDER VALUES

Girder	L	S	X	Y	N
G3.10	28'-3 1/4"	29'-6 3/8"	2"	1'-1 1/8"	12
G3.10A	17'-11 1/16"	19'-2 3/16"	2"	1'-1 1/8"	7
G3.13	6'-1"	8'-5 3/4"	1'-3 5/8"	1'-1 1/8"	2
G3.14	15'-4 3/8"	17'-10 1/16"	1'-4 3/16"	1'-1 1/8"	7
G3.15	25'-5 1/2"	27'-11 1/16"	1'-5 1/16"	1'-1 1/8"	12
G3.16	36'-5 1/4"	39'-1 1/2"	1'-7 1/8"	1'-1 1/8"	17
G3.17	45'-1 3/8"	46'-11"	8 1/2"	1'-1 1/8"	22

NOTES:

- All steel shown on this sheet shall be Conform to the requirements of AASHTO M270 GR 50.
- Load carrying components designated "NTR" shall conform to the Supplemental Requirements for Notch Toughness, Zone 2.
- For Connection Plate Detail see "Girder Elevations 1" Sheet 96.

GIRDER ELEVATIONS 4
RAMP 3 FLARE
STRUCTURE NO. 016-0724

TYLIN INTERNATIONAL	DESIGNED - JPN	REVISIONS		SHEET NO. 99	F.A.I. RTE.	SECTION	COUNTY	TOTAL SHEETS	SHEET NO.				
	CHECKED - AMD,	NAME	DATE		55					0711.2R & 1011.1BR	COOK	200	129
	DRAWN - MAU				CONTRACT NO. 60L39								
	CHECKED - AMD,				FED. ROAD DIST. NO. 1 ILLINOIS FED. AID PROJECT								
	DATE - 08/02/10												

8/5/2010 2:51:23 PM p:\01345\beam and bearing fabrication\5573\Framed\16.dgn